

C. B. HOOBER & SON INC.

Eastern Pennsylvania's

SPRAYER HEADQUARTERS



FEATURING:

- 1 — Quality Sprayers at Bargain Prices
- 2 — Snyder Polyolefin Tanks
- 3 — Trailing, Side-Mounted, 3 Point Hitch Configurations
- 4 — Tee-jet, Delavan, Hypro, Ace Components and Pumps

COMBINE QUALITY SPRAYERS WITH HOOBER'S CUSTOM-BUILT CHEMICAL INCORPORATION SYSTEMS AND GET RESULTS!



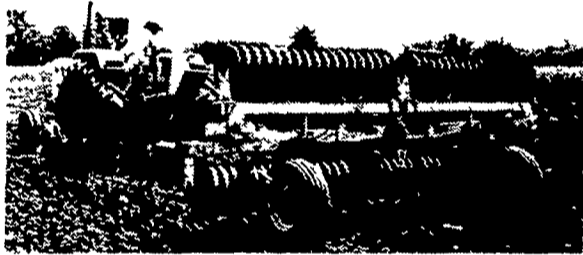
400 Gal. Side Mount

Hooper's Price **\$1165⁰⁰**

Includes: Tanks, saddles, agitator, shut-off valves, strainer, and return by-pass line.

DUNHAM LEHR

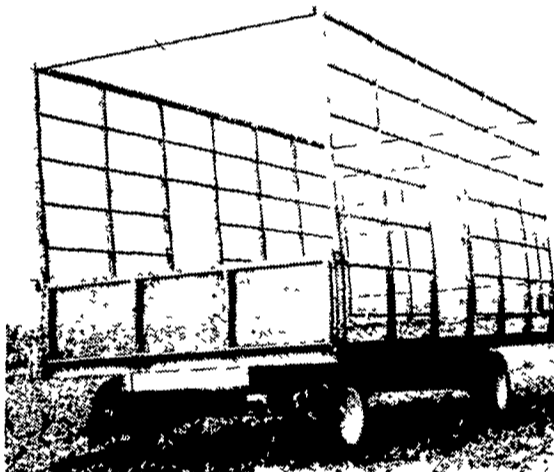
SERIES 42 WING CULTIPACKERS



- Wings Fold Flat for Transport
- Sizes in Stock: 20'7", 24'9", 27'7" & 31'9"
- 19" Smooth or 20" Crowfoot Rollers

PRICED RIGHT . . . for QUALITY

RUGGED STEEL BALE WAGONS



Call toll free for price: 800-732-0017
YOU'LL BE SURPRISED!
Available in 18 & 21 Foot Lengths

YES
KRAUSE
ROCKFLEX DISKS
LOVE ROCKS
But . . . They
CUT & FINISH too!
Ask A Farmer Who Owns One

Call Us For A Price-

PARTS DEPARTMENT - Call Us, We Probably Have It

IH PLOW COULTERS

17" - Reg. \$24.39

SPECIAL **\$19.89**

20" - Reg. \$33.18

SPECIAL **\$20.00**
No. 474251R1

IH PLOW PARTS

SPECIAL PRICES

- SHARES
- LANDSLIDES
- SHINS
- MOLDBOARDS

WINDBREAKER TRACTOR HEATER

SPECIAL PRICE FOR:

- FARMALL 656
- FARMALL 666
- FARMALL HYDRO 70

\$75

10% OFF

ALL OTHER MODELS

USED TRACTORS

- #4316 - Allis Chalmers-1976 7040D 1747 Hours 20 8 x38 Tires
- #3426 - IH - Farmall M Price \$1,250 00
- #4091 - Ford 9N Price \$1,550.00
- #2688 - Farmall A w/Loader Price \$1,475 00
- #2459 - IH Hough Loader Reconditioned
- #4634 - IH F656D Hydro, 1969, WF
- #4627 - IH 70D Hydro 1975, WF
- #4599 - IH F666D 1972, WF
- S2040 - IH - 4166D w/3 Point Hitch
- W4502 - IH I-424 Gas Utility, 3 Point
- W3419 - Case - 4 WD w/Cab & Dozer
- IH F 1086D, Cab
- White, Model 2-180, 1979
- IH F856D

USED SPREADER

- #4695 - New Idea - 214 New
- Web - Price \$1,750 00

USED DISC HARROWS

- #3244 - Bush Hog Model 1445 9" Spacing, 21' Cut
- #2349 - IH 370 11'6" 36 Blades
- #3352 - IH - 37 13'8" 44 Blades
- #4784 - Miller - 12'
- #4949 - Deere Model 1630 24 Disks
- #4170 - Deere - 13' Model 1520 24 Disks
- T3428 - IH 470, 12'
- T3559 - Sunflower, G3-22, 22' Fold
- T4430 - Deere, 330, 21' Wingfold
- T4544 - Deere 330, 24' Wingfold
- White, 15'
- Miller, 12' Offset
- MF, 520, 21' Wingfold
- Deere, 230, 25' Wingfold

USED CULTIPACKERS

- #4264 - 12' w/transport
- #4493 - IH 315 Packer - Mulcher 12'4" w/vibra shank teeth
- #4365 - Brillion - 12'
- #4778 - Dunham-Lehr 12' - New

USED CHISEL PLOWS

- #3429 - Krause 13 Shank Chisel w/Stalk Slicer Attachment. Price - \$3,800.00
- #3495 - Taylorway 3 Point - 11 Tooth. Price - \$1,350 00
- #3283 - IH - #45 vibra Shank 9 1/2" mounted
- #4965 - Brillion - Trailing 12 shanks
- #4661 - Glenco Soil Saver 9 shank

USED PLOWS

- #3854 - IH - 700 7F - 16", In Furrow Price - \$2,100.00
- #2441 - IH - 540 - 4F 16" Price - \$1,200.00
- #2741 - IH - 3F - 14" Trailing Plow Price - \$225 00
- T3854 - IH - 700, 7F, 16" Furrow Hitch
- T2052 - Deere, 7F, 16" On Land

ALL NEW & USED PRODUCTS BACKED BY **HOOBER PARTS & SERVICE**

RADIO CONTROLLED TRUCKS FOR BETTER SERVICE
C. B. HOOBER & SON INC.
INTERCOURSE, PA (717) 768-8231 AUTHORIZED UPS STATION

