

## State 4-H leaders tour Washington

WASHINGTON, D.C. — Southeastern Pennsylvania 4-H leaders returned this week from Washington, D.C., where they attended a National 4-H Leader Forum at the National 4-H Center.

They were part of 65 delegates from Nebraska, Missouri, Arkansas, Indiana and Pennsylvania. Bob

Leiby, Lehigh County Agent, coordinated the Pennsylvania group.

Developed around the theme of expanding horizons, the sessions helped leaders become more effective in working with 4-H members and other volunteer leaders. Featured were in-depth workshops on

citizenship, the legislative process, health, rocketry, leadership, fun in 4-H and economics, job and career educational programs for youth, and National 4-H Council services.

Educational field trips added depth to the program. Special features during this forum were meetings at the

U.S. Department of Agriculture and field trip workshops at the Museums of History and Technology and of Natural History. During a day on Capitol Hill to see the federal government in action and discuss issues, these 4-H leaders visited with local representatives, met with Senator Heinz's aide and observed debate in the U.S. Senate.

One of the most exciting parts of the forum was sharing ideas with others. They plan to apply newly acquired skills in the southeastern Pennsylvania Extension Region.

4-H Leader Forums are conducted throughout the year by National 4-H Council in behalf of the extension service.

## Red meat increases

HARRISBURG — Commercial red meat production in Pennsylvania during February totaled 77.5 million pounds, up nine percent from February 1979, according to the Pennsylvania Crop Reporting Service.

Cattle slaughter at 52,300 head was up one percent while calf slaughter at 21,100 head was five percent more than in February a year ago. Hog slaughter totaled 270,700 head, 16 percent greater than last year. The number of sheep and lambs slaughtered totaled 11,500 head, up 29 percent from February 1979.

Nationally, commercial red meat production in February 1980 totaled 3.05

billion pounds, up 11 percent from February 1979. Beef production at 1.71 billion pounds, was up less than one percent, while average liveweight increased 37 pounds to 1,069.

Veal production at 28 million pounds declined 20 percent.

Pork production totaled 1.29 billion pounds, up 29 percent. The 7.60 million head killed was up 28 percent and was a record for the month, surpassing February 1952. The average liveweight of hogs was 239 pounds, up two pounds.

Lamb and mutton production increased 19 percent to 25 million pounds.



Fourteen 4-H leaders from Southeastern Pennsylvania counties met on Capitol Hill at Washington, D.C. while attending the National 4-H Leader Forum.

## Egg output soars another 21%

HARRISBURG — February 1980 egg production in Pennsylvania totaled 347 million, according to the Pennsylvania Crop Reporting Service.

The February production was 21 percent above the 287 million eggs produced in February 1979. The

February average of 16.6 million layers was 11 percent higher than a year ago. Egg production per 100 layers was 2092, compared with 1926 in February 1979.

The nation's laying flocks produced 5.59 billion eggs

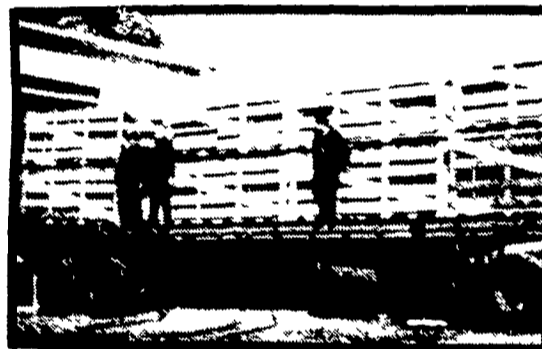
during February 1980, six percent more than a year ago. The number of layers during February averaged 290 million compared with 291 million a year earlier. Egg production per 100 layers during the month was 1924 compared with 1816 a year ago.

# MUELLER Bulk Milk Coolers

THE BULK MILK COOLER THAT HAS EVERYTHING including AUTOMATIC WASHING SYSTEM!

TAKE ADVANTAGE OF OUR

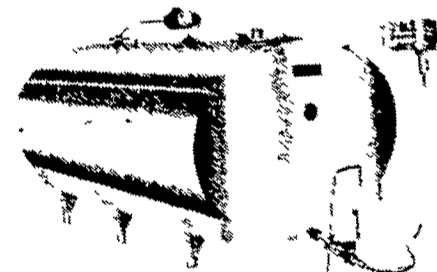
TRUCKLOAD SALE AND \$AVE \$\$\$



MAKE ME A BULK MILK COOLER THAT HAS EVERYTHING!

MUELLER HiPerForm

The Mueller Model "OH" with HiPerForm cooling, Mueller-Matic Automatic Washing System, and built-in freezer protection control is the most advanced bulk milk cooler in the world. The nation's most progressive dairymen are using it. Shouldn't you be?

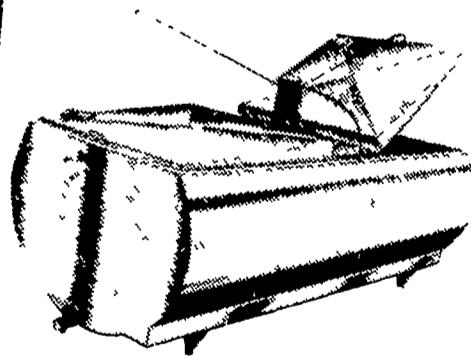


THE MUELLER MODELS OH, MHL, AND MW WITH HIPERFORM MAKE ALL OTHER BULK MILK COOLERS OBSOLETE SEE THE MUELLER NEW MODELS

★ 500MW ★ 600 MW

The "MW" is one of the Lowest pouring Height Bulk tanks. Check with us all the new features on the "MW" bulk tank.

If you are in the market for a bulk milk cooler and you don't check all the advantages of the Mueller "OH" "MHL", and "MW" you may be buying an obsolete cooler.



### USED TANKS

2 (3) D-2 500 Gal. Girtons  
1,000 Gal. Girtons  
500 Gal. Mojonner  
500 Gal. Milkeeper  
1000 Gal. Milkeeper

400 Gal. Jamesway  
500 Gal. Jamesway  
500 Gal. Dari-Kool  
400 Gal. Dari-Kool

425 Gal. Esco  
500 Gal. Esco  
1500 Gal. "O" Mueller  
800 Gal. DeLav<sup>SOLD</sup>  
800 Gal. V.A.

ASK US TO SEE A MUELLER PRE HEATER IN OPERATION, RIGHT ON THE FARM.

WE ARE ONE OF THE ORIGINAL MUELLER DEALERS

## QUEEN ROAD REFRIGERATION

Box 67, Intercourse, PA 17543  
Phone: John D. Weaver - 717-768-9006 or 768-7111  
or Answering Service - 717-354-4374

24 HOUR SERVICE

