

# Livestock market and auction news

## Chambersburg Auction

Thursday, March 27

Report supplied by PDA

**CATTLE:** 321. Compared with last Thursday's market: Slaughter steers grading Choice 50-75 cents lower; Sl. cows 50 cents-2.50 lower; Sl. steers Choice No. 2-4 950-1200 lbs. 64.00-67.25; Good 60.75-63.50; Standard 58.50-63.00; few Utility 52.00-55.00; Sl. heifers one Choice 67.00; few Good 55.00-60.00; Sl. cows Utility & Commercial 46.00-51.00, few 51.75. Cutters 47.00-50.50; Canner & L. Cutter 44.00-48.00; Shells down to 39.50. Sl. bullocks few Good 63.50-65.50; Sl. bulls Yield Grade No. 1, 1100-2000 lbs. 57.25-62.25.

**FEEDER CATTLE:** Steers few Large Frame No. 1 400-600 lbs. 70.00-79.00; few Large Frame No. 2 575-750 lbs. 57.00-62.50.

**CALVES:** 441. Vealers grading Good & Choice \$4-10 lower, Standard & low Good about steady; few Prime 112.00-126.00; Choice 109.00-125.00; Good 82.00-105.00; Standard & Good 70-95 lbs. 70.00-78.00; Utility 50-100 lbs. 55.00-70.00.

**FARM CALVES:** Hol. Bulls 85-125 lbs. 78.00-104.00; Hol. Heifers 85-140 lbs. 85.00-185.00, mostly 90.00-140.00.

**HOGS:** 79. Barrows and gilts \$1.50-2.50 lower. No. 1-3 210-250 lbs. 30.35-31.00. US No. 1-3 270-600 lbs. 25.00-29.75; few No. 2-3 500-650 lbs. 22.00-29.00. Boars 23.00-25.00.

**FEEDER PIGS:** 41. US No. 1-3 20-35 lbs. 10.00-17.00 per head; 1 lot No. 1-3 50 lbs. 20.50.

**SHEEP:** 302. Spring Choice 20-45 lbs. 125.00-143.00; 50-70 lbs. 98.00-116.00; 70-105 lbs. 72.50-82.00; Good 45-70 lbs. 84.00-100.00.

Wooled sl. lambs few Good 60-70 lbs. 50.00-65.00; sl. ewes 24.00-48.00.

**GOATS:** 96 Goat kids 25.00-65.00 head.

## Western Maryland Market

Tuesday, March 25

Report supplied by auction

**BUTCHER CATTLE:** Fat Steers no Choice offered; Good 58.00-60.00; Standard 55.00-58.00; Heifers Standard to 53.00; Cows large run, \$1.00 lower; Good Cows few to 51.00; Standard & Utility 46.50-49.00; Canners 45.00-47.00; Shelly 45.00 Down; Bulls good run; Top 2035 lbs. at 64.00; Bulk 1200-1600 lbs. 57.00-60.00.

**BUTCHER HOGS:** \$4.00 under last week. Top Hogs, one lot to 33.00; Bulk 200-225 lbs. 30.00-31.60; 230-260 lbs. 29.00-31.75; 170-190 lbs. 25.00-27.00; Heavy Weights 300-350 lbs. 25.00-27.00; Sows 300-400 lbs. 25.00-28.75.

**VEAL CALVES:** Big Calves \$5.00 lower. Tops, to 110.00; Good-Choice 90.00-110.00; Standard 75.00-90.00; Light Calves 70.00-78.00; Weak & Rough 70.00 Down.

**CALVES RETURNED TO FARM:** Holstein Bulls 95-115 lbs. 85.00-109.00.

**LAMBS:** very active! Good & Choice Spring Lambs 85-100 lbs. 74.00-79.00.

**STOCK CATTLE:** good run, \$4.00-8.00 lower. Stock Steers 60.00-90.00; Stock Heifers 55.00-71.00; Holsteins to 102.00; Stock Bulls 50.00-76.00.

**PIGS AND SHOATS:** large run, \$1.00 higher. By the Head 15-30 lbs. 8.00-17.00; 30-50 lbs. 15.00-27.50; By the Lb. 50-60 lbs. 41.00-43.00; 70-75 lbs. 43.00-45.00; Stock Boars 200-300 lbs. 22.00-26.00.

## Indiana Auction

Thursday, March 3

Report supplied by PDA

**CATTLE:** 109. Compared with last Thursday market. Sl. cows mostly 50 cents lower instances \$1 lower. (few) Good 57.00-57.25; (few) Standard 53.00-54.00; (few) Utility 48.50-50.60 Sl.

heifers: (few) Choice 59.00-60.00; (few) Good 55.50-58.00; (few) Utility 40.00-48.00. Sl. cows: (few) Utility & Commercial 47.75-50.00; Cutters 45.00-48.00; Canner & L. Cutter 42.00-46.50. Sl. bulls: (few) Yield Grade No. 1, 950-1550 lbs. 56.75-60.50; Medium Frame No. 2, 300-700 lbs. 55.00-62.50; (few) Medium Frame No. 2 400-650 lbs. 48.00-60.00; Bulls, few Medium Frame No. 2 500-800 lbs. 48.75-58.00.

**CALVES:** 105. Good 90.00-112.00; Standard & Good 90-120 lbs. 80.00-90.00; 70-90 lbs. 60.00-80.00; (few) Utility 55-125 lbs. 50.00-68.00.

**FARM CALVES:** Hol. Bulls 85-125 lbs. 75.00-106.00; Hol. Heifers 85-125 lbs. 95.00-150.00.

**HOGS:** 138. Barrows and gilts \$2.50-3.00 lower. U.S. No. 1-2 200-230 lbs. 31.25-32.00. No. 1-3 200-250 lbs. 29.25-30.75; few No. 2-3 195-275 lbs. 26.75-29.00; few No. 1-3 140-160 lbs. 23.00-26.00; US No. 1-3 300-500 lbs. 28.50-33.50. Boars 19.00-22.50.

**FEEDER PIGS:** 6. 1 lot US No. 1-3 40 lbs. 15.00 per head.

**SHEEP:** 160. Spring sl. lambs Choice 20-40 lbs. 132.00-148.00; 40-55 lbs. 106.00-122.00; 60-70 lbs. 70.00-108.00. Few Choice woolled sl. lambs 65-75 lbs. 68.00-80.00; few good woolled sl. lambs 50-70 lbs. 58.00-70.00; 65-100 lbs. 50.00-58.00; Sl. ewes 8.00-31.50.

(few) Standard 52.00-58.00. Sl. cows Utility & Commercial 46.00-53.00; Cutters 44.75-50.00; Canner & Cutter 41.00-47.00; Shells down to 39.50. Sl. bullocks: Good & Choice 60.00-66.00; (few) Standard 56.00-61.00; Sl. bulls: Yield Grade No. 1, 1200-2100 lbs. 57.00-65.00; Yield Grade No. 2, 900-1300 lbs. 55.00-59.00.

**FEEDER CATTLE:** Steers, Large Frame No. 1, 375-600 lbs. 70.00-81.00; Large Frame No. 2, 300-700 lbs. 63.00-76.00; Medium Frame No. 1 300-650 lbs. 65.00-80.00. Heifers, Medium Frame No. 1, 300-550 lbs. 60.00-72.00. Bulls, Medium & Large Frame No. 1 400-600 lbs. 60.00-78.00; Large Frame No. 2 500-850 lbs. 52.00-63.00.

**CALVES:** 3510. Compared with 3878 head last week and 3680 head a year ago. Vealers steady to \$5 lower. (few) Prime 120.00-132.00; Choice 100.00-125.00; Good 85.00-105.00; Standard & Good 90-110 lbs. 65.00-75.00; 70-90 lbs. 55.00-70.00; Utility 50-110 lbs. 45.00-70.00.

**FARM CALVES:** Hol. Bulls 90-130 lbs. 80.00-120.00; Hol. Heifers 90-140 lbs. 100.00-215.00.

**HOGS:** 9424. Compared with 8419 head last week and 9767 head a year ago.

Barrows and gilts \$3 to \$4.50 declining market throughout week. US No. 1-2 200-240 lbs. 31.00-34.00, few down to 30.00; No. 1-3 190-250 lbs. 29.25-33.00; No. 2-3 190-270 lbs. 27.00-31.00; No. 1-3 140-185 lbs. 24.00-30.00; Sows \$2-3 lower. US No. 1-3 300-600 lbs. 26.00-31, few to 35.00; few No. 2-3 400-700 lbs. 22.00-26.00. Boars 18.00-28.00.

**FEEDER PIGS:** 1198. Compared with 1461 head last week and 1150 a year ago steady to weak. US No. 1-3 25-35 lbs. 11.00-19.00 per head; No. 1-3 35-50 lbs. 15.00-27.00; No. 1-3 50-75 lbs. 20.00-31.00.

**GRADED FEEDER PIGS:** 3827. Compared with 2025 head last week, and 2381 head a year ago. All sales

CWT. Feeder Pigs \$8-20 lower. (few) US No. 1-2 25-40 lbs. 43.00-61.00, 40-50 lbs. 39.00-61.00, 50-60 lbs. 35.00-60.00, 60-70 lbs. 34.00-47.00, 70-95 lbs. 30.00-37.00; US No. 2-3 25-40 lbs. 40.00-58.00, 40-55 lbs. 32.00-49.00, 60-85 lbs. 27.00-28.50.

**SHEEP:** 4294. Compared with 661 head last week and 803 head a year ago. Spring sl. lambs most lambs 20-60 lbs. for Easter trade. (few) Choice 25-45 lbs. 120.00-165.00; 45-60 lbs. 100.00-140.00; 60-75 lbs. 85.00-105.00; few 75-100 lbs. 70.00-80.00; Good 20-50 lbs. 90.00-130.00; Choice woolled sl. lambs 70-110 lbs. 55.00-75.00; Good woolled sl. lambs 60-100 lbs. 57.00-69.00. Sl. ewes 15.00-38.00.

**THINK AHEAD...**  
Read Futures Markets on Page 3.

## Pa. Auction Summary

Friday, March 28

Report supplied by PDA

**CATTLE:** 6707. Compared with 5996 head last week, and 6689 head a year ago. Compared with last week's market: Slaughter steers \$1-3 lower; Sl. cows & heifers \$1-2 lower; Sl. bulls steady to \$1 lower. Sl. steers High Choice & Prime 65.00-67.00; Sl. heifers: Choice 61.00-64.00; Good 56.00-62.00;

## Indiana Auction

Thursday, March 3

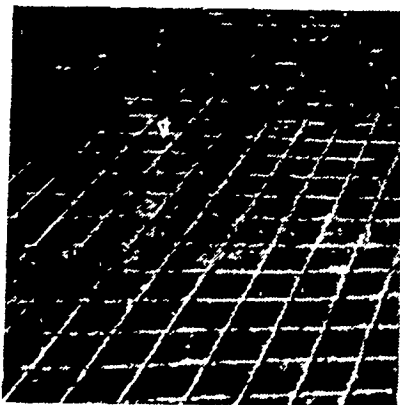
Report supplied by PDA

**CATTLE:** 109. Compared with last Thursday market. Sl. cows mostly 50 cents lower instances \$1 lower. (few) Good 57.00-57.25; (few) Standard 53.00-54.00; (few) Utility 48.50-50.60 Sl.

## Slick Problem Areas?

### DAIRYMEN: CONCRETE-GROOVING Cuts Grooves in Concrete Floors

- PREVENT SPLITS
- INSTALL IN HOLDING AREAS
- IMPROVE HEAT DETECTION
- INSTALL IN FEEDING AREAS



Grooves 1/2" wide x 1/4" deep - 4" apart

- PREVENT BROKEN LEGS
- ELIMINATE COWS SKIDDING
- PREVENT CRACKED CONCRETE
- INSTALL IN ALLEYS

Why not join the increasing number of dairymen throughout the Eastern states who now receive profitable benefits from this service.

CONTACT US TODAY!

## CONCRETE GROOVING, INC.

MERLE BECKER

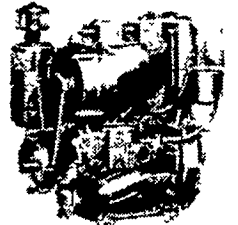
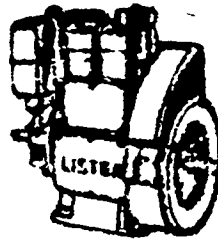
399 S. Reading Rd., Ephrata, PA 17522  
PHONE (717) 733-7589

## SMUCKER'S SALES & SERVICE

RD #2, BOX 21  
NEW HOLLAND, PA 17557

DISTRIBUTOR FOR:

**LISTER, PERKINS & SLANZI DIESELS**



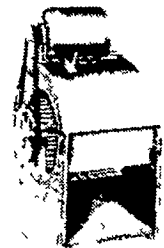
- Good used diesel engines

- New Sputnik wheels and parts

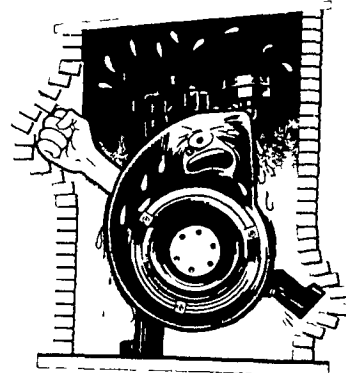


We mount diesels on balers, crimpers, cornpickers, etc.

Install a blower fan for better diesel & refrigeration cooling. Longer life on diesel.



LET ME BREATHE!



For lower cost per hour power, rely on



FOR PROMPT SERVICE CALL  
717-354-4158 OR IF NO ANSWER  
CALL 717-354-4374.