

# 'Luttringers' find goodwill in New Zealand and Australia

LANCASTER — Americans visiting New Zealand and Australia come to the pleasant realization that Americans are very, very welcome and that American policies are sympathetically supported.

H. K. Luttringer, who traveled in February and March as a leader of an agricultural leaders People-to-People Goodwill Mission, said the welcome his 21-member group from south central Pennsylvania

received was genuine. He added, "What our group saw impressed them that 12,000 miles away is a country very capable of a high degree of agricultural technology. The people know exactly what they're doing and they're doing it very well." Luttringer, 1559 Mission Road, is vice-president for worldwide marketing and communications for Sperry New Holland.

Australia is almost as big as the United States, and the

Pennsylvania delegation visited a very small portion of the country around Sydney in southeastern Australia. They visited primarily the North Island of New Zealand, one of the two islands which comprises that nation.

The area they visited in Australia used mostly dryland farming, which means it is non-irrigated. Thousands of acres are planted to wheat, Luttringer said, and it is all grown with normal rainfall, which is about 25 inches a year maximum, but may amount to only 15 inches. The biggest agricultural enterprise there is sheep, and the Pennsylvania group saw sheep grazing by the thousands on the flatland.

Luttringer said that "stations", as their farms are called, average from 2000 to 4000 acres and are operated as family units. A single family can handle that acreage, he explains, because of the good weather and the flat land. "They don't have winter." Often, it is possible to grow two crops annually.

Soybeans are being grown there as a new crop, and there are fields of sunflowers from which seed or oil is harvested. Luttringer said, "Many people were surprised that they didn't use larger equipment, but they don't have the tractor power we have." Nevertheless, big equipment does help with the harvest.

He added, "Many of our

grassland practices are from New Zealand and England, and they are very advanced in their technology."

The Pennsylvanians had the opportunity to stay overnight with some of the Australian farmers they visited. One couple they stayed with had been crowded out of the Melbourne area because of growing suburbanization, and moved 600 miles northeast of that city to run sheep. The couple reported paying \$200 an acre for land 18 months ago, with the land now worth \$600 per acre. Luttringer pointed out that this is land suitable only for grazing.

This family had 1850 head of sheep, which is less than one animal per acre, the average for sheep farming there. "It is just pasture," Luttringer said. The man handles the whole farm himself with the help of sheep dogs. They sell spring lambs and mutton and breed their own replacement animals. Because of the temperate climate, the breeding is spread out year round. An operation such as this one, Luttringer said, was totally new to the Pennsylvanians.

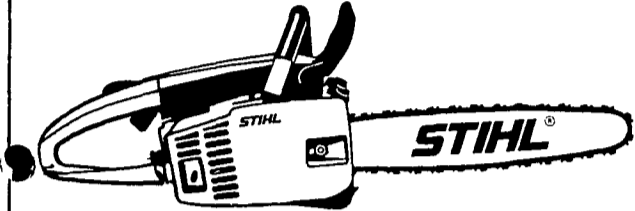
He explained that a basic problem with the land is the small depth of topsoil. It leaches easily, losing its fertility. Fertilizing is extremely important, and he said superphosphates are

(Turn to Page C30)



Mr. and Mrs. H.K. Luttringer show a sample of the few momentos they purchased on their goodwill mission to New Zealand and Australia. The agricultural mission learned about farming practices in those countries. Luttringer sports his "Joe hat", a straw hat designed by Prime Minister Joe Fraser to protect farmers from the sun.

## BUY A STIHL 015 AV AND GET ELECTRONIC IGNITION FREE.



The Stihl 015 with its built in Anti Vibration system is a bargain at any price. But by buying one now you'll also get a free no maintenance never out of adjustment, no moving parts high voltage Electronic Ignition system for even faster starts and more dependable woodcutting.

And that makes it an out and out Stihl!

**STIHL**  
The world's largest selling chain saw.

Get it while we've got it from

**STOLTZFUS WOODWORK**

RD Gap PA Box 183  
1 Mile North Rt. 897 From Gap

**WES STAUFFER SMALL ENGINES**

RD 3 Ephrata PA  
Phone (717) 733 9174  
Ephrata Exit New Rt. 222  
1/2 Mile West on Rt. 322  
Turn left onto Pleasant Valley Rd

**FREE DEMONSTRATION**  
Chain Saw - Concrete & Metal Saw Rentals

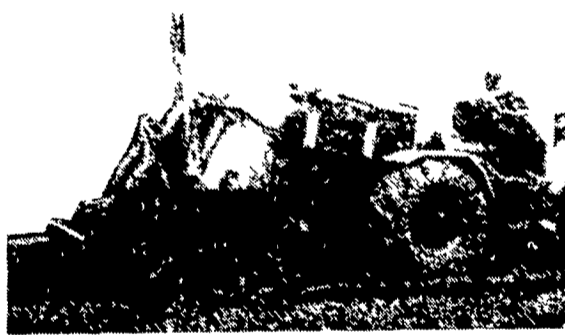
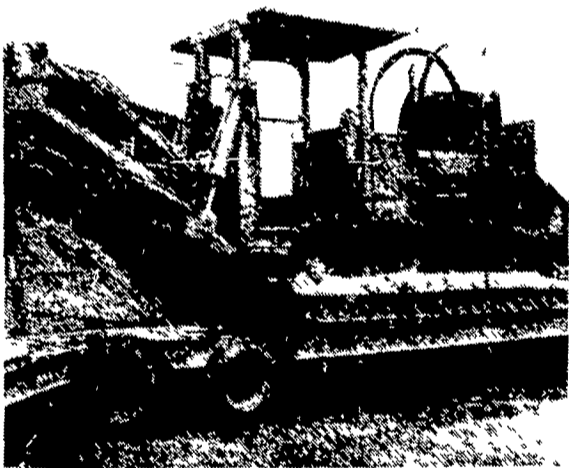
**A & B SALES & SERVICE**

2 Miles South of Rt. 23 Along 772  
Thru Monterey RD 1 Ronks PA

**NORMAN H. ZIMMERMAN**

Myerstown, RD 2  
Phone (717) 866-4695  
1/2 mile west Myerstown  
West Main St

## DRAINAGE PROBLEMS?



**COCALICO EQUIPMENT HAS THE TWO MACHINES TO HANDLE YOUR DRAINAGE PROBLEMS.**

★ Both Machines Equipped with Laser Beam Grade Control

### Drainage Pays High Returns

Investment	Typical Annual Return
Land Drainage	21-46%
Farm Buildings	3-23%
Farm Land	11%
Stocks	7-4%
Bonds	6-1%

### COMPARE

Even with the conservative figures shown here, it's obvious that land drainage should top farmers' lists of investment priorities.

★ We Stock Heavy Grade Tubing which Exceeds SCS Specifications. In sizes 4", 6", 8", 10" and 12".

★ Also Pipe And Fittings For Tile Outlet Terraces.



**COCALICO EQUIPMENT CO.**

DRAINAGE & EXCAVATING

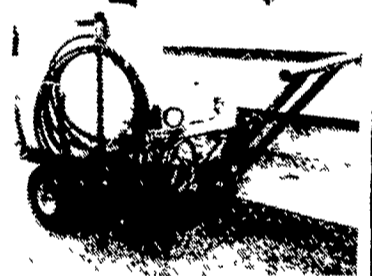
RD #3, DENVER, PA 17517

PH: 215-267-3808

## HOME ORCHARD SPRAYERS

List \$489.98  
SPECIAL

**\$459<sup>98</sup>**



## PARTNER

**CHAIN SAWS**

Sizes from 12" to 20"

Starting as low as

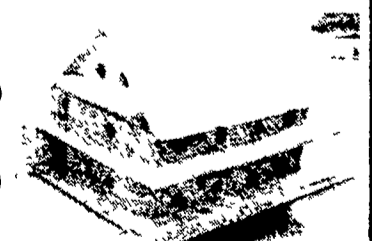
**\$79<sup>95</sup>**



## PURPLE MARTIN HOUSE TWO SIZES

14 HOLE **\$65**

24 HOLE **\$75**



## COMPLETE SHARPENING SERVICE

Lawnmowers, Hand Saws, Circular Saws (reg & carbide)

## ESH'S SHARPENING & SALES



- Plumbing • Hardware
- Welding & General Repair
- Home Orchard Sprayers
- Partner Chain Saws

3867 Old Philadelphia Pike,  
Gordonville, PA 17529

1 Mile East of Intercourse along Rt. 340