

Dauphin Co. DHIA

(Continued from Page C14)

Patsy	4 7	19 460	3 8	746
Freda	4 10	12,627	4 0	511
Wilmer Campbell				
Kay	4 4	14,970	5 1	766
Bonita	1 10	12,673	4 4	559
Flo	2 2	12 443	4 2	528
J Richard Allwine				
Princes	7 5	21,330	3 3	700
Marvel	8 5	16,775	3 2	541
Penny	4 11	20,281	3 6	731
Pinky	3 6	17,602	3 1	543
Emma	3 11	14 829	3 9	572
Rocket	3 11	18,376	3 6	662
Homer Campbell				
71	2 1	14,560	3 8	551
98	2 3	13,454	4 6	615
32	2 2	14 357	3 8	547
Catalpa Farms				
Bertie	3 3	18 002	3 8	693

Lana	3 0	13,409	4 2	557
Nymph	2 2	13,554	4 1	550
Stanley R Long				
Queen	9 11	15,542	3 6	553
Stumpy	11 1	15,886	3 2	512
Gay	9 4	15,758	3 6	571
Plum	6 2	15,181	3 6	547
Sherr	4 4	15,568	3 5	544
Penny	4 2	15,058	3 6	549
Dana	3 10	14,332	4 3	611
Restful Acres				
Burke	7-3	19,515	3 8	743
Jennell	5 5	20,021	3 3	659
Robert H Beach, Jr				
26	12 4	14,149	4 2	597
100	3 11	13,838	4 0	558
Lauden Farms				
Sara	8-4	19,614	3 3	646
Debbie	8 3	20,890	3 9	814
20	7 7	16,578	4 0	659
Juanita	4 6	21 581	4 0	854
Vera28	3 11	19,393	3 5	688
Flore68	3 4	18,134	3 9	714
117	2 1	17 803	3 8	676

Lancaster Farming, Saturday, March 29, 1980—C15

119	2 0	13,147	3 9	508
Gary E Miller				
21	7 5	15,703	3 5	545
24	7-4	16,203	3 9	634
30	7 5	19,611	3 3	642
35	6-5	17,181	4 6	789
Great View Farms				
Iona	6 4	16,397	3 4	555
Jenifer	7 6	23,575	4 4	1038
Henry Keiter				
Lucinda	3 11	13,099	4 2	547
Monica	3-5	14,271	3 7	534
Mrs Elwood Mike Zell				
32	2-2	16,048	3 7	601
A Grandview Farm				
1	6-9	14,106	4 1	577
33	5-8	17,162	3 1	527
Arthur Brandt				
Laura	8 9	15,109	3 7	553
Rosie	6-10	16,186	3 6	588

(Turn to Page C16)

SAVE \$\$\$

Ask Us For Repowering

REPOWER

WITH VM DIESEL

Harvesters, Haybines, Tractors, Cornpickers, Balers, Hydraulic Systems, Corn Binders, Choppers

SAVE \$\$\$

Ask Us For Repowering



1050 SU SERIES



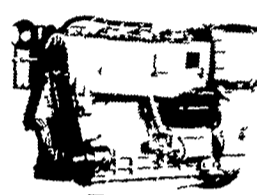
2800 R P M
22 SAE HP
20 DIN HP



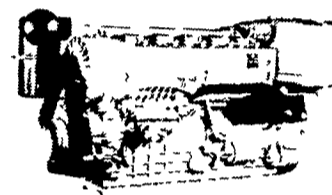
2800 R P M
44 SAE HP
40 DIN HP



2800 R P M
66 SAE HP
60 DIN HP



2800 R P M
88 SAE HP
80 DIN HP



2800 R P M
132 SAE HP
120 DIN HP

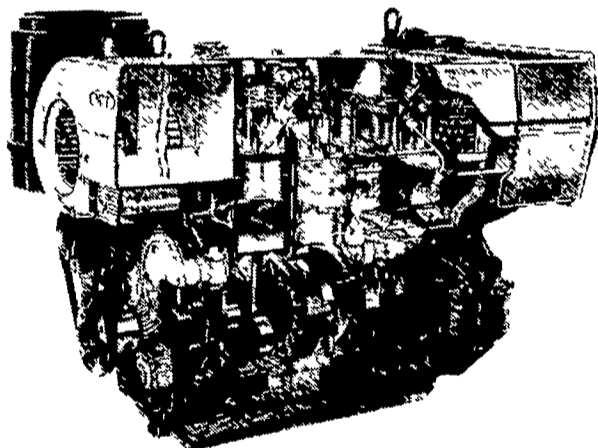
THE NEW AND REVOLUTIONARY FAMILY OF ENGINES

All New HR Series

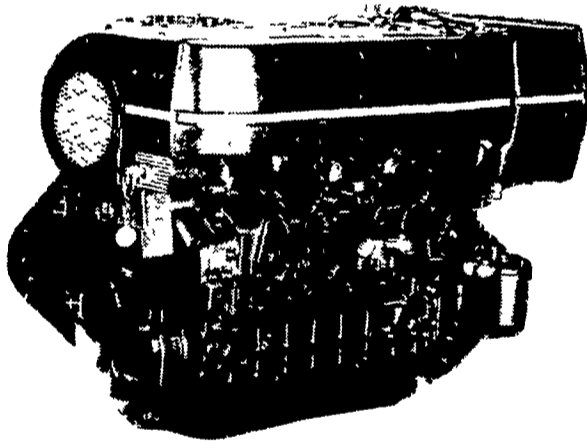


Oil Cooled Jacket

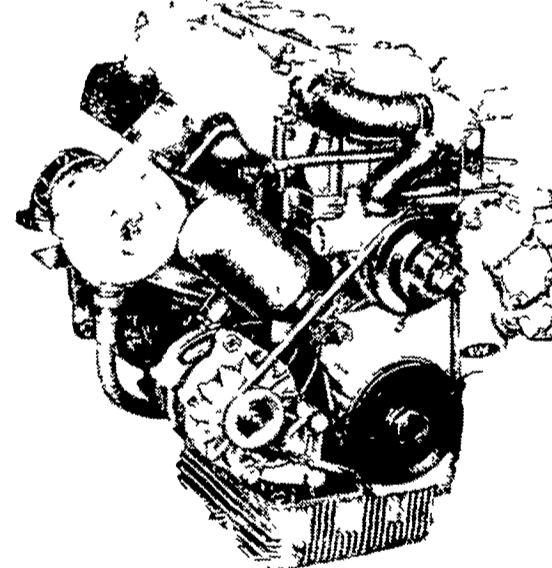
OIL COOLED



AIR COOLED



WATER COOLED



General Features:

- Integrally cast cylinders with inserted and removable wet type cylinder liners
- Light hypereutectic alloy pistons
- Extra-resistant steel connecting rods alloyed with special alloy head bearings
- Surface hardened steel crankshaft
- Drop-forged, casehardened and tempered steel camshaft
- Anti-friction cast-iron tappets alloyed
- Cast-iron tunnel type crankcase
- Rotary injection pump with mechanical governor

- Force-feed lubrication with built-in circuit and lobe type pump
 - Diaphragm pump feed
 - Oil and fuel filters with integral type element.
- Special structure and patented engine with consequent increases in performance and easier operation with low weight/output ratio low smoke emissions.
- Engine based on a design "modulus" formula which allows a maximum parts standardization and interchangeability.

Ask For Horsepower Ranges Of Above
THE "RIGHT FROM THE START" DIESEL ENGINE LINE
FOR FAULTLESS PERFORMANCE

USED DIESELS

- (2) SR 2 Lister
- (2) SR 3 Lister
- HRS 6 Lister
- F6L 912 Deutz
- Cylinder Deutz
- DVA 2220 Slanzi
- PJ1 Petter

QUEEN ROAD REFRIGERATION

Box 67, Intercourse, PA 17534
Phone: John D. Weaver - 717-768-9006 or 768-7111
or Answering Service - 717-354-4374

24 HOUR SERVICE