

**HAY EQUIPMENT FOR SALE
DISCONTINUING RAISING HAY**

- 1975 NH model 479 haybine \$2200
 - 1976 NH model 1034 bale wagon \$8300
 - 1976 NH Model 276 baler \$3200
 - 2 1978 NH model 258 rakes with full extra
tines and dolly wheels on front \$2000 each
 - 1978 NH dual rake hitch \$300
- Equipment in excellent condition and has had dealer pre season check each year. Call or write

FLITCRAFT'S CREAM VALLEY DAIRY

195 East Ave Woodstown NJ 08098
609 769 0600
1/2 mile east of Woodstown on Rt 40

**HYDRAULIC REPAIRS
CYLINDERS • JACKS
PUMPS • CAB JACKS
BEARTOWN HYDRAULICS**

**New and Used Equipment
Narvon, PA
Rt. 322 Midway
between Honey Brook & Blue Ball
Phone 717-354-5649**

**The Time Is Right..
The Price Is Right!!**

**NEW EQUIPMENT SPECIAL
MODEL 532-20 FORD
PICKUP HAY BALER**

14" x 18" bale chamber, pickup with 6 bars and 72 rubber mounted teeth, long tongue with 3 joint 1-3/8" PTO drive, pickup gauge wheel, wagon hitch and bale loading chute, bale counter, tongue lock, deluxe tongue jack, flotation rubber tired wheels

\$3995

• Stop In or Call •

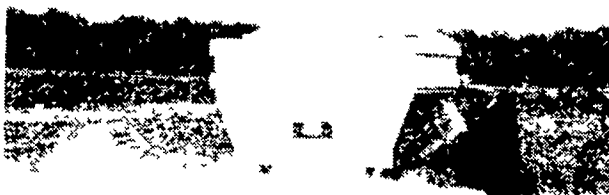
Sales & Service On:
• Ford • New Idea • New Holland •

WALTER G. COALE, INC.

2849-53 Churchville Rd.
Churchville, Maryland
Ph: (301) 734-7722 or (301) 879-1434

S. L. WEBSTER & SONS, INC.

Fedralsburg, MD 21632



BIG SAVINGS

on Demo & Used Lime & Fertilizer Equipment

CLEARANCE SALE

Wet lime & Fertilizer spreaders
fertilizer spreaders, tenders, tender/spreader
combinations.

This equipment carries a full 6 yr.
warranty on bodies.

Call Collect

301-754-5511

Donald O. King - Salesman

FOR SALE

- Int. 806 w/18.4x34 Duals
- Ford 801 w/Loader
- Case 1270 w/cab & duals
- Ford 8000 diesel
- JD 4020 diesel
- MF 1080 diesel w/loader
- AC D17

We have over 15 New Ford Tractors in stock.
from 13 hp. to 163 hp.
Ready to go.



**DUFFEY FORD
TRACTOR**

Wye Mills, MD
301-820-2000
301-758-2500



**INTERNATIONAL®
AGRICULTURAL
EQUIPMENT**

USED TRACTORS

IH 674D, very good cond.	Coming In
F-460 G, engine good needs TA	3,950
IH 674 G, recond & paint	1,975
Farmall 300	8,250
Farmall M	1,850
Farmall M	1,350
Farmall M	1,500
Farmall M	1,500

PLOWS & TILLAGE

IH 540 4-16" plow, semi mt	1,250
IH 550 5-16" plow, semi mt	1,750
IH 510 6-16" plow (new)	3,950
AC 3 pt 3-16"	450
MF 3 pt 10' disc	600
Pittsburgh 12' disc	1,750
JD transport 12' disc	600
IH 37 transport 9' disc	600
JD 12' harrow	175
Brillion 10' cultipacker	450
Pitts. 12' disc	1,750
JD 10' packer mulcher	900

**USED PLANTING
EQUIPMENT**

IH 456 4R planterw/insect.	Coming In
IH 455 4R planter, reconditioned	2,200
JD 494 4R	950
JD 494A 4R	1,200
MM 4R planter	700
Ford 311 4R planter	1,150
Oliver 76 SD drill	1,600

MISCELLANEOUS EQUIPMENT

Kelley loader w/bkt	650
IH 155 Spreader	900
Starline tub spreader	1,450
Ford 170 bu.	900
Several used Hawk Bilt spreaders	as is 450

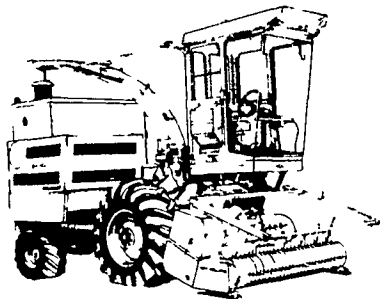
USED HAY & FORAGE EQUIPMENT

IH 120 Mower	650
NH 479 haybine, 9'	2,450
IH 990 mower cond., 9'	2,600
Hesston model PT10 mower cond., 9'	1,950
NI 290 mower cond., 9'	1,650
IH 430 all twine w/wide pickup & thro.	3,850
IH 27 baler w/thro	1,875
IH 8 6' flail chopper	1,500
IH 650 harv. w/2 hds	3,300
IH 550 harv. w/2 hds	2,950
NH 818 harv. w/2 hds	800
Fox 546 Harv. w/1R hd & pickup	1,650
Gehl FH84 harv. w/1R hd. & pickup	600
Gehl FB88 blower	950
NH forage box & chassis	1,500
IH 110 forage box w/chassis & roof	2,800

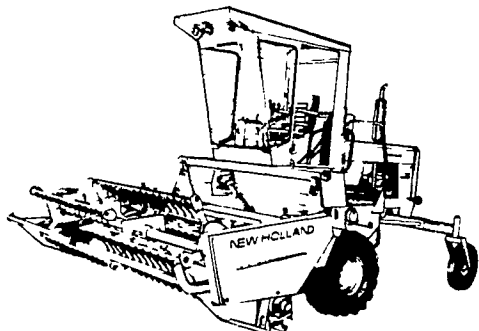
QUALITY HAYMAKING BEGINS HERE

A giant silage - maker that's 250-hp strong

1895 SP CHOPPER



- Exclusive under-beveled knives
- Exclusive flip-up feed roll
- Exclusive electronic metal detector



1495 Haybine® Mower-Conditioner
12 ft. cut with 9 ft. conditioning rolls for
faster drying action.

FACTORY REBATES UP TO \$3,000 ENDS APRIL 30 - WHY WAIT? MAKE SURE OF A REBATE!

★ WAIVER OF FINANCE AVAILABLE

EXCEPTIONALLY GOOD USED EQUIPMENT

- IH 1486 Cab & Air, 670 Hours
- NH 1469 Self Propelled Haybine
- New Idea 224 Spreader, 10 Ton
- NH 320 Baler & Thrower, Used 1 Season
- NH 770 Harvester, 2 row Head
- NH 425 Skid Loader

GOOD USED EQUIPMENT

NH 275 Baler & Flail Attachment	IH Farmall cub with Equip	NH 365 Tank Spreader	IH 710 3 Bottom Auto Reset Plow
IH 37 Baler & Thrower	IH 225 Hay Swather	NH 346 Tank Spreader	Oliver 13 Disc Grain Drill
IH 1190 Mower Conditioner Used 1 Season	IH 56 Blower	NH 518 Spreader	IH 11 Disc Grain Drill
NH 469 Haybine	IH 830 Harvester 3 Row & Pickup	NH 790 Spreader w/end-gate	McConnell 16 Disc Grain Drill
NH 461 Haybine	IH 650 Harvester 2 Row & Pickup	NH 290 Spreader w/end-gate	10 ft Cultipacker
NI 2 Row Corn Picker	NH 717 Harvester 2 Row	NH 510 Spreader & Hyd Gate	NH 357 Grinder Mixer, Excellent
NH 479 Haybine	JD 66 Blower	IH 370 Disc Harrow	IH 449 4 Row Planter
Hesston P T 10 Conditioner	NH 512 Spreader & Upper Beater		

► YOUR FULL SERVICE DEALER ◀

MESSICK FARM EQUIPMENT, INC.

RHEEMS EXIT - RT. 283, ELIZABETHTOWN, PA
PHONE: 717-367-1319, 653-8867

M. DALE HERR — HOME 665-2718 WARREN SPICKLER — HOME 653-4560



NEW HOLLAND

MIFFLINBURG FARM SUPPLY, INC.

East Chestnut St., Mifflinburg, PA 17844
Phone: (717) 966-3114