

## Public Sales Register

Closing Date - Monday, 5:00 P.M.  
of each week's publication

**MON., APR. 14 - 10 30 A.M.**  
Public Sale - Rue-Hel Farms Complete Dispersal of 235 Holsteins Located 8 miles north of Reading, PA Just off Rt 61, turn west off Rt 61 just north of Leesport on Mohrsville Rd to Centerport and take first road left (Railroad Rd.) to farm Elwood & Ruth Ohlinger Owners R Austin Backus, Inc Sale Managers and Auctioneers

**TUES APR 15 - 7 00 P.M.**  
Feeder Sale - Held at Carlisle Livestock Market, Carlisle, PA

**WED APRIL 16 - 9 A.M.**  
Consignment Sale by David H Good located 1/2 mile North of Route 23 on North Maple Ave in Leola, Lancaster Co., Pa Watch for sale signs F Snyder, R Martin, C Wolgemuth, J Fry and L Horst Auctioneer

**THURS & FRI APRIL 17 - 18 -**  
Large 2 day Sale at Horst's Machinery Sales Lot, 1/2 mile east of Marion, PA Ralph W Horst Sale Manager

**THURS APR 17 - 10 00 A.M.**  
Public Sale of Farm Equipment, Household, Car, Antiques Located 2 miles west of New Oxford on US Rt 30, thence turn south onto Kohler Mill Rd, 1 block and take Cedar Ridge Rd 1 mile, Adams Co, PA Charles J & Ruth S Geisler Owners Clair Slaybaugh Auctioneer

**FRI APR 18 - 6 30 P.M.**  
Consignment Sale of Feeder Cattle & Feeder Pigs at Keister's Middleburg Auction Sales, Inc, Rt 522, 3 miles East of Middleburg, 5 miles West of Selins grove, Pa Don & Walt Keister, Owners Larry Long Auctioneer

**FRI APR 18 - 10 A.M.**  
Winchester - Feeder Calf & Yearling Sale to be held the Farmers Livestock Exchange, Inc located 1 1/2 miles west of Winchester, Va on U S Route 50

**FRI APR 18 - 9 30 A.M.**  
Public Sale of Tools & New & Used Furniture Located in Earl Twp., Lancaster Co., Pa between Ephrata & Blue Ball, Pa along Rt. 322, approx. 1/2 mile East of Hinkletown traffic light across from bicycle shop Terms by Elvin W & Linda A Weaver Elton & Alvin Horning Auctioneers Horning Farm Agency, Inc Main St, Morgantown, Pa 215-286-5183

**FRI APR 18 - 7 30 P.M.**  
Feeder Cattle and-Calf Sale Held at South Branch Stockyards, Inc., Moorefield, WV

**SAT APRIL 19 - 14th Colonial**  
Charolais Spring Sale, at the Farmers-Livestock Exchange, Boonsboro, Md Sale managed by Buzz Garey, 100 Walnut Lane, Morrisville, Pa

**SAT APR 19**  
Public Sale of Personal Property in Landisville, PA Sale for Raymond Hostetter, Kreider and Diller Auctioneers

**SAT, APR 19 - 10 A.M.**  
Real Estate & Personal Property Located at west end of Maple Grove Rd in the village of Bowmansville, opposite Rennings Hardware Store Terms by Estate of Mary Hoshauer, Executor - John Hoshauer Elton & Alvin Horning Auctioneers HORNING FARM AGENCY, INC

**SAT APR 19 - 1 00 P.M.**  
Public Sale - 13th Annual Feeder steer sale - 130 steers Located 12 miles west of York, PA 1/4 mile east of East Berlin, PA along Rt 234, Slaybaugh Auctioneer, C. L. "Cot" Jacobs and Barry L Jacobs Owners

**SAT, APRIL 19 - 6-30 P.M.**  
Danville Livestock Market horse sale Located Old Route 11, Danville, PA Melvin M Lehman, owner

**SAT APRIL 19 - 11 00 A.M.**  
Public Sale of Real Estate Held at the site of Real Estate located 3 miles northwest of York Springs and 4 miles SE of Mt Holly Springs on Rt 94 thence turn east 1 1/2 mile at Fickel Rd in Latimore Twp, Adams Co, PA Glen D Snyder Administrator of James U Fickel Estate Clair R Slaybaugh Auctioneer

**SAT APR 19 10 00 A.M.**  
Public Sale of Livestock and Farm Machinery, Location Turn off Rt 125 north leading from Pine Grove to Tremont on Paradise Rd to Hill Rd to Mountain Rd about 3 miles from Rt 125, D R Snyder Owner Frank & Paul Snyder Auctioneers

**SAT APR 19 5th Annual**

**Machinery Consignment Auction**  
Located on Rt 15 between Jioga and Lawrenceville, PA by Woodshed Restaurant Gordon Wood Sale Manager

**SAT, APR 19 - 10 00 A.M.**  
Public Sale of 100 acre farm, Antiques and Farm Machinery. Located RD Broad Top, PA Todd Twp Huntingdon Co, PA Estate of Elvin (Mike)

**Baler Robert D. Fleck Auctioneer**

**SAT APR 19 - 10.00 A.M.**  
Public Sale of Real Estate and Household Goods Located in Rd 1, Richfield, PA, 1/4 mile north of Rt 35, first place west of Graybill's Grove, along Shade Mt. Sale for Mrs Mary (Ellie) Shellenberger Ralph E Leitzel Auctioneer

**CHESTER WHITES & DUROCS**  
Boars, Gilts, Bred Gilts  
Also Chester-Duroc Cross  
Top Bloodlines. 100% Guaranteed  
Delivery Can Be Made!

**4-H, F.F.A. Pig Sale**  
**APRIL 19, 1980**  
7:00

This is our Full Time Work  
We Aim To Please!  
**KEN WETZEL & FAMILY**  
R.D. #1, Box 79  
Rossiter, Pa. 15772  
Phone: 814-845-2181



## COMPLETE MILKING HERD DISPERSAL OF 100 HEAD INCLUDING OPEN & BRED HEIFERS FRIDAY, MARCH 28, 1980 12:00 Noon

to be held at  
**SMOKETOWN QUALITY DAIRY SALES**

Route 340, Smoketown, Pa. 5 miles East of Lancaster, 5 miles West of Intercourse, Pa.

**16 Bred Heifers, 17 Open Yearlings**

All cows had shots for shipping fever and IBR. Bloodtested within 30 days for interstate.

There are 100 head in this herd. Sixty six cows and thirty four heifers. Fresh cows and springers. Thirty cows due from June to Nov. Twenty one cows fresh from Jan. to March. Seven due April & May. Summer and Fall cows. Heifers bred from Nov. to Jan. Some are artificial bred. 2 bred by Willow. Eight cows milking 80 to 100 lbs. per day. Fifty nine cows milking over 3,000 lbs. per day. Cows average over 50 lbs. per day.

Registered Sires Include:

Reynold and Cockney Prince;  
Dunga-Brook Pabst Walker-Twin, bred by Busy-Acres Lindy;  
Cochran Sunshine;  
Seiling Rockman-Born 5-18-73 bred by Clue Farm Indigo Sunset;  
Heindel K. C. Kirk Jupiter, bred by Ace-High-Dairy Trixie Ben Ted;  
Fara-Hills Fond Citation, born 12-18-73 bred by Penn Nel-Apollo King Arthur;  
Busy Acres Super Randy, born 9-19-73, bred by Executive;  
Suedale Bucky T, born 10-26-74;  
Heindel K.C. Kirk Jupiter, born 11-2-75 bred by Milbrofarm Elate Magician.

**COWS ARE USED TO STANCHIONS AND FREE STALLS.**

Group of top heifers just fresh. 33 Heifers selling following their Dams- 17 heifers are vaccinated.

Heifer's Sires Include:

Whitter Farm Apollo Rocket  
Willow Farm Rockman Ivanhoe  
1 Red & White Heifer sired by Ca-Lill Standout Cavalier  
Rose-E-Vue Rockman Count  
Limestone Standout Strepahan  
Penn Dell Apollo King Arthur  
Cobble Farm Killian  
Hiendel K.C. Kirk Jupiter  
Nicholk Sunshine Bold Chief

All Eastern Sires and bred back to good Eastern Bulls. These sires are plus in milk and plus in fat. Sold for health reasons.

One Registered 6 year cow-Sire-Questmade Pal-Performer, Dam-Apollo 5 yr. 365 dys. 17,095M, 574F. Maternal 3/4 sister 365 dys. 18,044M, 693F.

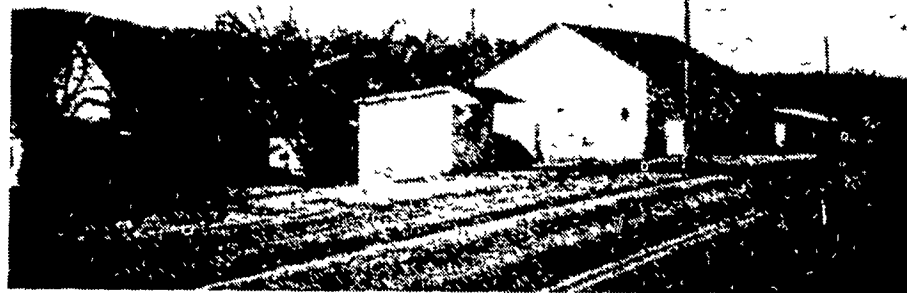
One Registered Holstein Bull ready for service. Born 1-4-79, Sire-Paclamar Astronaut. Dam-Dan-Mar-Elevation 2 yrs. 2 mo. 305 days. 16,601M, 4.0T, 671F, classified 86 as a 2 year old. Granddam Apollo 3yrs. 290 dys., 19,392M, 3.7T, 711F.

Dairymen if you want good cows for future foundation, these are the kind for the dairymen just starting.

SALE BY  
**GORDON W. FRITZ**  
717-393-0930

Cows milked at regular time.  
Cash or good check day of sale.  
Carl Diller, Auctioneer.  
Henry Kettering - Pedigrees

Lunch By Bird-In-Hand Auxiliary



## PUBLIC SALE

VALUABLE REAL ESTATE,  
FARM EQUIPMENT, HOUSEHOLD  
GOODS, TOOLS, ANTIQUES & GUNS  
GOOD FRIDAY, APRIL 4

AT 10:00 A.M.

Located 5 miles West of Route 309 at Snyders on Route 895, 3 miles East of New Ringgold on route 895. Formerly known as the Paul Blew Farm, East Brunswick Township, Schuylkill County, PA.

LOOK FOR SALE SIGNS

**REAL ESTATE CONSISTS OF** — App. 10 Acre Farm, 2 1/2 Story Frame House, 6 Rooms and Bath, Coal Stoker, H.W.H., Spring and Well Water, Large Bank Barn, Numerous Other Outbuildings, Large Outdoor Cold Storage, Highway Frontage, East Brunswick Township, Blue Mountain School District.

**FARM EQUIPMENT** — Ford 4600 SU diesel tractor 3 pt. W.F.E. 16-9-24 tires in excellent condition with 625 hours, Int. Farmall cub tractor with 1 row cultivator, Int. super C tractor tricycle front end 2 pt. fast hitch, Roper 18 inch fast hitch post hole digger, 12 ft. Int. harrow, Myers mity-mist 3 pt. pto. fan fruit tree sprayer, Ford rear mounted heavy duty scraper blade, 2 Farquhar trailing sprayers pto. with pump and tanks, New Holland ground drive manure spreader, 2-wheel flat trailer, 3 pt. cultivator, 3 pt. Ford spring tooth harrow, Ford 3 pt. rotary mower, Ford 14 inch 2 bottom 3 pt. plow, Ford 3 pt. 7 ft. grass machine, New Holland No. 66 baler with gas engine, Ford No. 309 - 2 row corn planter 3 pt. with fiberglass fertilizer hopper, Side delivery rake, 2 section spike harrow, Hand potato plow, Superior 10 shoe grain drill, David Bradley grain elevator, App. 200 bales of hay, App. 80 bushels of oats, Wall drill press, Corn sheller with motor, Ass'd. hand tools, 100s of bushel crates, Many half bushel baskets, Egg grader, Air compressor with motor, Honey extractor, 2 battery operated golf carts, Step ladders.

**CAR AND TRUCKS** — 1974 Dodge 3/4 ton club cab, automatic transmission, good tires, 1972 1/2 ton Ford panel truck (for Parts), 1963 Rambler station wagon (for Parts).

**HOUSEHOLD AND ANTIQUES** — Large brass poster bed, 3 pc. oak bedroom suite, Oak round table, Oak press back arm rocker, Oak stands, Oak wardrobe, 3 pc. wicker porch set, Swan front horse sleigh, 3 pc. living room suite, Recliner, Stands, 5 pc. wooden bedroom suite, 4 pc. modern bedroom suite, 8 pc. dining room suite, High chair, Drop leaf table, Coal stove, Whirlpool automatic washer, Hoosier base, Norge gas stove, Table and floor lamps, Porch glider and chairs, Kitchen base cabinet, Oak dresser, Crank telephone, Press back chair, Cream separator, Wood cabinet, Display shelf, Benches, Cast iron fry pans, Metal cabinet, Wood barrels, Old bottles, Sausage press, Old cabbage cutter, China and glass ware.

**GUNS** — L.C. Smith double barrel shotgun, Muzzle loader shotgun, Winchester Modell 94 rifle, 410 and 44 Caliber guns.

MANY OTHER ITEMS TOO NUMEROUS TO MENTION.

**TERMS** — Real Estate 10% Down on Day of Sale, in Cash or Certified Check, Balance Within 30 Days.

Personal Property - Cash or Approved Check.

For Inspection to See Real Estate Call 717-386-4563 or 717-386-2151.

NOT RESPONSIBLE IN CASE OF ACCIDENTS

SALE ORDERED BY:  
**WILLIAM J. MARTIN**

**AUCTIONEER:**  
Robert A. Arner  
ROUTE 2 - BOX 216, NEW RINGGOLD, PA. 17960  
Phone 717-386-4586

REFRESHMENTS