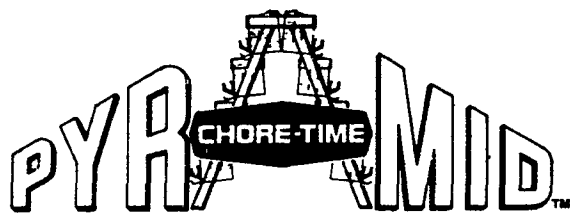


**MADE  
TO  
WORK!**

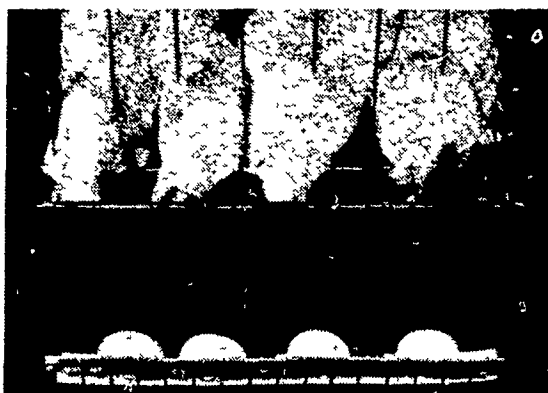
# CHORE-TIME

**BUILT  
TO  
LAST!**

**LEADERS IN REVERSE CAGE  
RESEARCH & DEVELOPMENT**

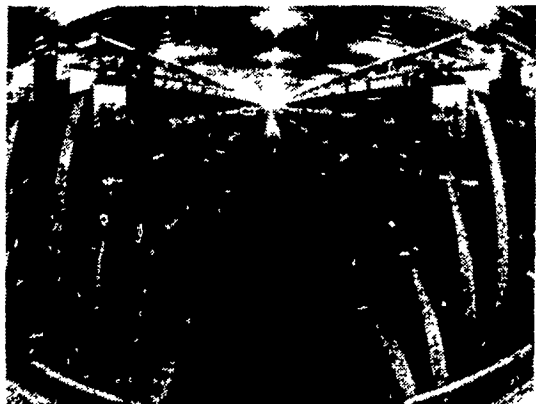


**REVERSE CAGE  
LAYER SYSTEM**



**LESS BIRD STRESS**

The system has been designed for bird comfort! Each bird has her place at the feed trough. Each has easy access to water. Obstruction to light and the flow of air have been greatly reduced, providing more uniform ventilation and lighting for every bird. Combined with Chore-Time's automatically controlled air inletting system, you get a layer house environment designed for bird comfort and the resulting better production.



Not only the physical shape of the feed trough, but the operation of the feeder has been engineered to reduce feed waste. The trough shape cuts down on feed loss from "raking" and "bbling," while the feeder has been specifically designed for Chore-Time's programmed and performance feeding concept.

★ **LET US SHOW YOU A REVERSE CAGE SYSTEM IN OPERATION**

## The Air System With A Mind Of Its Own

Until now, most ventilation systems had one drawback. Air inlets had to be opened and closed by hand.

This was time consuming — and pretty much a matter of guesswork.

Now, Chore-Time has eliminated this problem.

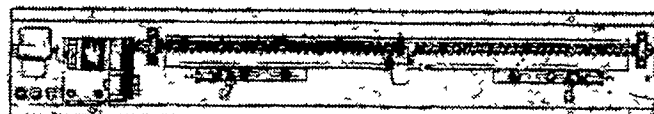
The Chore-Time system has a mind of its own and adjusts inlets — in conjunction with

fan operation — to maintain air pressure at a constant, preset level.

This provides a degree of air and moisture accuracy never before possible in poultry and livestock buildings.

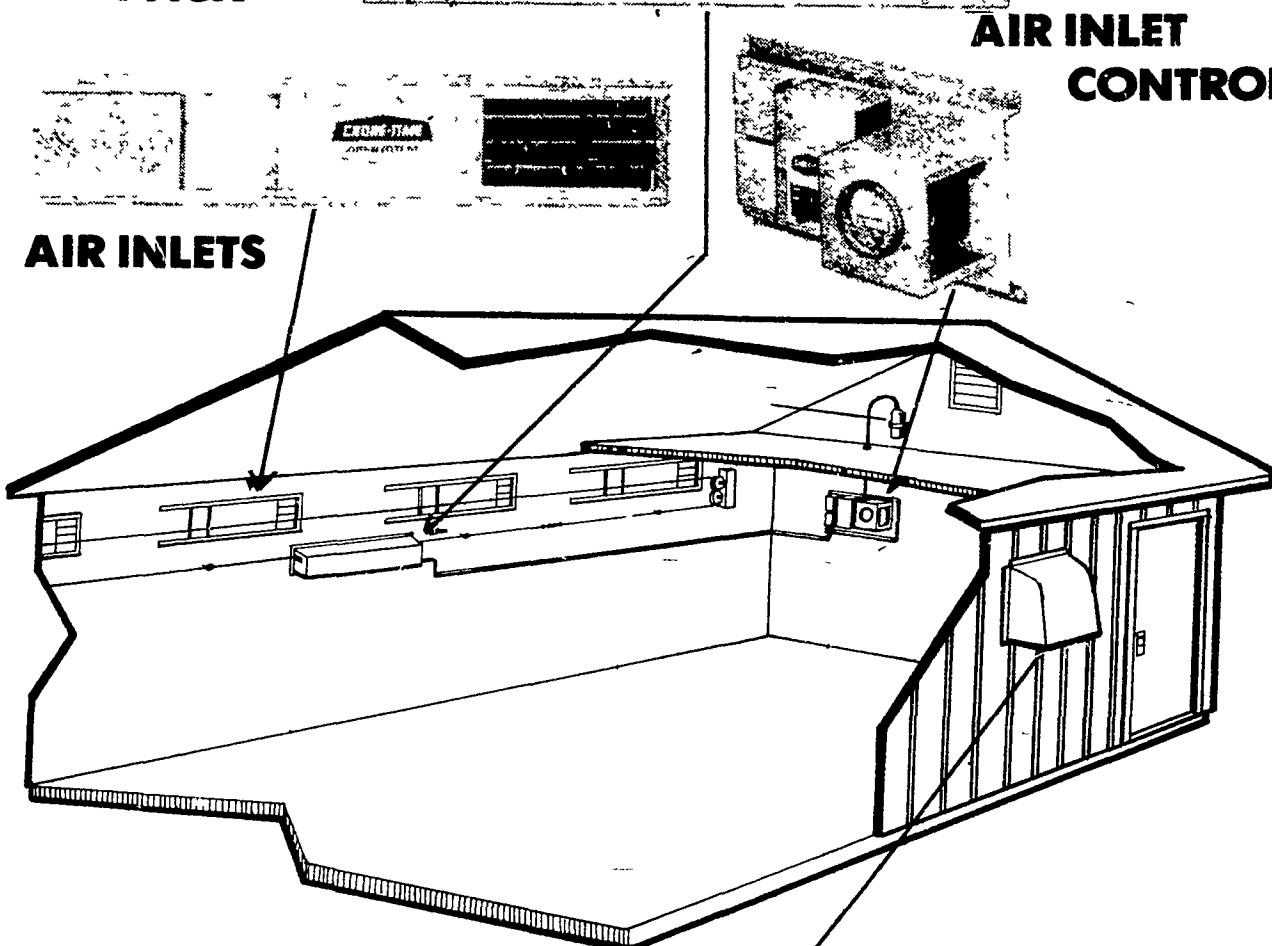
The new inlet control (pictured) is just one of many exclusive features that make Chore-Time air systems number one in performance and reliability.

**INLET POWER  
PACK**

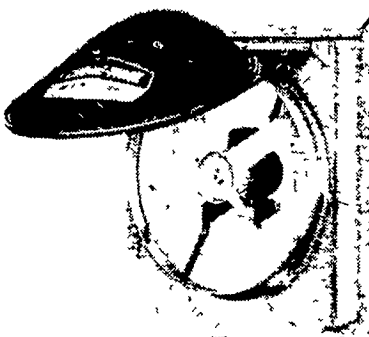


**AIR INLET  
CONTROL**

**AIR INLETS**

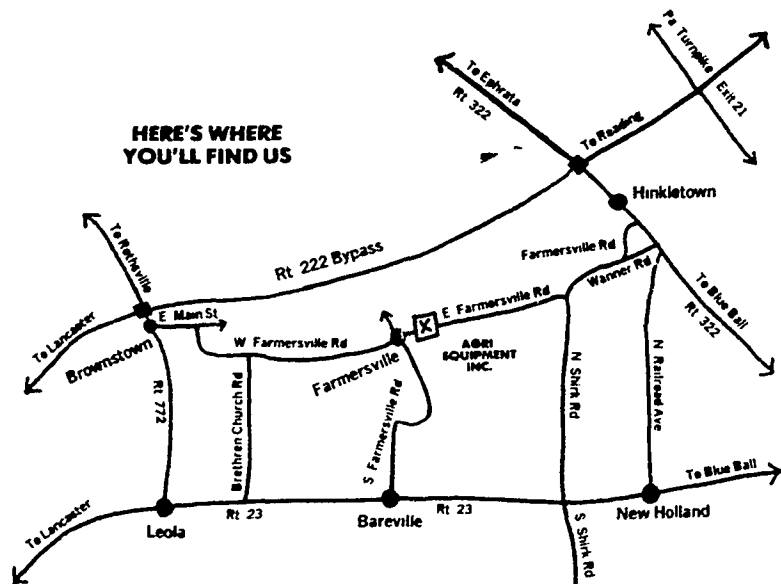


Four basic components go into the makeup of this ventilation system: the fan, the inlet, the air inlet power pack, and the controls. Coordinated, these four basic components can provide you with better conversion and performance by removing stresses due to lack of oxygen, excess humidity, noxious gases and temperature extremes.



Reliability through simplicity, Chore-Time's advanced air system provides automatic control of incoming fresh air, moisture and heat for productive environmental control in agricultural buildings.

**AUTOMATIC  
HOOD FAN**



**AGRI-EQUIPMENT, INC. OFFERS COMPLETE  
SALES • INSTALLATION • SERVICE**



**CATTLE-HOG-POULTRY EQUIPMENT**

RD4, EPHRATA, PA 17522 PHONE: (717) 354-4271

STORE HOURS: Mon. thru Fri. 7:30-5:30

Sat. 7:30-12:00