

Farmers to receive new estimated tax form

HARRISBURG — New PA-40ES forms for the Declaration of Estimated Income Tax in 1980 have been sent to more than 500,000 taxpayers in the Commonwealth of Pennsylvania, Secretary of Revenue Howard A. Cohen announced today.

The mailing includes thousands of farmers.

According to Secretary Cohen, a new system for processing the 1980 PA-40ES forms has been introduced in the Department of Revenue, which will provide for more accuracy than the previous system and will speed up the process of posting to the taxpayers' files.

The new forms distributed for the first time this year vary from the keypunch cards used in the past, in that they will be processed by optical character recognition scanning. Each of the new forms, distributed in multiples of four on a single sheet, are imprinted with the individual taxpayer's social security number, name and address in an OCR typeface.

The taxpayer has only to print the digits in their dollar amounts at the right on the front of the form, sign in the space allotted at the bottom, and return it to the Department of Revenue in one of the envelopes provided.

Figures must be printed carefully in the style indicated in the sample on the

front of the form, preferably with a ballpoint pen using black ink. Figures must not be typewritten.

Henderson said because of lack of contrast in light blue and lime green colors in the background on the printed forms, certain portions may be difficult to read, but the problem will be resolved when new forms are printed. He said the Department apologizes for the inconvenience at this time.

The Declaration of Estimated Personal Income Tax provides the means of declaring and paying Pennsylvania Income Tax on a current basis if the taxpayer has taxable income

not subject to withholding.

Individuals who do not qualify for a complete forgiveness of tax liability, as provided for under the Special Tax Provisions of Act 32 of the Pennsylvania General Assembly, must file a declaration if they reasonably expect their total Pennsylvania taxable income to exceed \$1000 during the taxable year, other than compensation subject to employer withholding. Pennsylvania Personal Income Tax is imposed at the rate of 2.2 percent.

Special Tax Provisions have been enacted for those eligible taxpayers to receive a full or partial refund or

forgiveness of tax liability, and this forgiveness should be taken into consideration when filing a declaration.

If the taxpayer meets the requirements for filing of estimated tax on or before April 1, a declaration must

be filed no later than April 15 and the estimated tax must be paid in full with the declaration, or in four equal installments—the first on filing the declaration, and the second, third and fourth installments on or before the

succeeding June 15, September 15, and January 15, respectively.

Complete information on who must file and instructions on filing and payment are included with the PA-40ES forms.



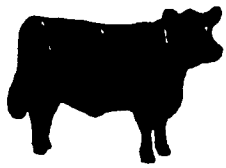
ANNUAL PJCC MEETING

MARCH 28, 29, 1980
Bradford Co. Pa.

The Annual Meeting of the Pennsylvania Jersey Cattle Club will be held Friday and Saturday, March 28 and 29. Headquarters will be the Sayre, Bradford County, Pa. Highlight of the Friday meeting will be an address Friday evening by Stanley Chittenden, president of the American Jersey Cattle Club. The Banquet and Annual Meeting will be held in East Athens on Saturday. More information can be obtained from: Eugene Harris, Sunset Ridge Farm, Box 193, Milan, Pa. 18831.

PENNSYLVANIA JERSEY CATTLE CLUB, INC.

Sec.: Florence Robinson
9269 Metntzer Gap Road
Waynesboro, Pa. 17268



BONUS 1980

Up to \$600 bonus buying power for early orders of John Deere Disks, Chisel Plows, or Hay and Forage Equipment



Preseason orders help John Deere plan production of most needed models and sizes. So from February 1 through May 31, 1980, John Deere is offering impressive bonuses for preseason orders. This bonus is above and beyond our best deal to you on this equipment. Your early order qualifies you for \$50 to \$600 in John Deere money for certain models of disks, chisel plows, balers, mower/conditioners and pull type forage harvesters. Promptly after delivery you'll be mailed your bonus John Deere money to spend for products or services at our store.

There's more. You'll get price protection from

BUYER BONUS IN JOHN DEERE MONEY FOR NEW EQUIPMENT ORDERS SIGNED DURING *

EQUIPMENT	FEB	MAR	80	APR	MAY	80
DISKS						
111 and 115		\$ 75		\$ 50		
210 215 310 315 340 1630		\$150		\$100		
210 230 235 350 440		\$225		\$150		
455 1540		\$275		\$250		
121 and 360		\$500		\$350		
CHISEL PLOWS						

the time you order any machine in the bonus program. Use a John Deere Finance Plan and no finance charges will accrue on any machine in the program until the first day of the month which begins the 1980 use season in our area.

This early-order program includes a list of dozens of disks, chisel plows and hay and forage tools. But your preseason order must be signed before March 31 to earn the most John Deere money. Come in soon, check the list and ask us for our best deal on this new equipment.

You'll be expected to take delivery of the equipment as soon as it's available.

1610 Drawn Rigid (19 thru 23-foot)		
1610 Drawn Flexible (23 thru 27 foot)	\$200	\$125
1610 Drawn Flexible (29 thru 41 foot)	\$300	\$200
1650 Folding	\$600	\$400
BALERS		
All Square and Round Balers	\$225	\$150
MOWER/CONDITIONERS		
1707 1209 and 1380	\$300	\$200
FORAGE HARVESTERS		
Fut. 200 145	\$400	\$250
Pull 1 1 1 1 1	\$400	\$250

ENFIELD EQUIPMENT INC.
Whiteford, MD 21160 Phone 301-452-5252



Miller Heavy-Duty Rigid Offset Disc



Designed as rugged companions for today's high performance tractors. Miller Heavy Duty discs are greatly strengthened in all critical areas — able to withstand the exceptional stress generated by heavy loading, difficult discing conditions and high ratios of horsepower to foot-width of usage.

Although heavy and super-tough, the Miller Disc is always well behaved, offering excellent plowing and discing capability under all conditions from extreme to moderate or light.

With Hydraulic Leveling Control
IN STOCK AT OLD PRICE

COMPLETE SALES & SERVICE

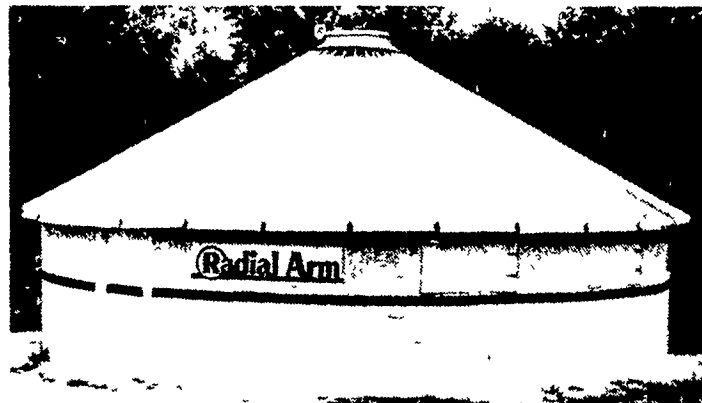
GRUMELLI FARM SERVICE

RD 2, QUARRYVILLE, PA 17566
PHONE: 717-786-7318

Introducing...

Radial Arm™

circular finishing
Automated Hog Confinement



NEW

SELF CLEANING HOG BARN

102 Head Capacity

NEW EASY TO CONSTRUCT ROUND BARN-

Base comes in 12 curved sidewall sections. One section includes a dutch walk door. The other 11 sections can be ordered with or without a 24" x 48" ventilation door, thus allowing you to set up a natural ventilation condition or a total environmentally controlled unit or a combination of the two.

The unique circular design of the structure combined with vent doors that swing out (hinged on the side instead of at the top) provides a natural air scoop on one side and a natural air foil on the other side, thus causing air to cross ventilate regardless of wind direction. Roof cap on the bin roof can also be manipulated to provide additional natural air movement.

The 12 sections can be assembled in about one hour. Each section is complete with white painted strong panel steel on the exterior and fiberglass insulation in the wall. A fiberglass pig barrier is provided for interior covering and comes in a roll for installation after sidewall sections are assembled, thus providing for a seamless interior wall.

The assembled sidewall sections are covered by a conventional grain bin roof which is insulated with white polystyrene 3 1/2 inches thick. The polystyrene comes in panels and is 100% moisture resistant. The panels are installed using fasteners and will not come down or sag with age. It also enhances the appearance of the interior of the barn.

SPECIAL INTRODUCTORY PRICE \$8,995⁰⁰ f.o.b.

Contact Your Eastern Distributor

THOMAS BACHMAN & SONS

2501 Fallston Road

Fallston, MD 21047

301-557-7529 or 301-836-6877



CIRCULAR CONED FLOOR is divided in half by Radial Arm Cleaning unit and gate on which feeders are mounted. On command motor drives gate around pivot moving manure to gutter. Material flows down gutter pushed by scraper paddle into pipe and out of building.