

Livestock market and auction news

Hay Markets

Good's Hay

Leola, Pa.
Wednesday, March 12
 Report supplied by auction
 131 loads moved.
 Alfalfa 44.00-113.00;
 Timothy 48.00-63.00; Mixed
 35.00-100.00, mostly 55.00-
 70.00; Clover 50.00-55.00;
 Alfalfa & Orchard 73.00-
 87.00; Straw 41.00-66.00;
 Corn 81.00-86.00.

New Holland Hay

New Holland Sales Stables
Monday, March 10
 Report supplied by auction
 210 loads moved.
 Alfalfa 40.00-122.00;
 Timothy 34.00-70.00; Mixed
 24.00-115.00; Straw 29.00-
 70.00; Corn 68.00-84.00.

Regional Hay

Monday, March 3
 Report supplied by PDA
 (All hay No. 2 and better,
 prices paid by the dealers at
 the farm and per ton.)
 Hay & Straw slow, steady.
 Large amount on offer.
 Lower quality hay steady to
 weak.
 Alfalfa 50.00-75.00; Mixed
 hay 40.00-50.00; Timothy hay
 35.00-50.00; Straw 35.00-
 50.00; Mulch 20.00-35.00.

Green Dragon

Ephrata, Pa.
Friday, March 7
 Report supplied by PDA
 100 lds. hay and 28 lds.
 straw.
 Alfalfa 50.00-84.00, few to
 127.00; Mixed hay 30.00-
 110.00, mostly 40.00-87.00;
 Timothy hay 40.00-57.00;
 Clover, few 49.00-58.00;
 Straw 43.00-61.00, few 72.00;
 Ear Corn, 5 loads 76.00-84.00.

Beil's Hay

York Springs, Pa.
Friday, March 7
 Report supplied by auction-
 30 loads. Prices per ton.
 Alfalfa 44.00-56.00;
 Timothy 39.00-65.00; Or-
 chard Grass 38.00-42.50;
 Mixed 40.00-68.00; Clover
 40.00-45.00; Mulch 30.00;
 Straw 39.00-45.00; Firewood
 43.00 per cord.

Central U.S. Carlot

Wednesday, March 12
 Report supplied by USDA
 Compared to Tuesday's
 4:30 report: market thinly
 tested with Choice steer beef
 2.00-2.25 lower, Choice
 Heifer Beef 2.00-3.00 lower
 later. Most trading for this
 week delivery. Demand light
 but trading at a near stand-
 still as buyers and sellers
 remain about a dollar apart
 on price levels. Heifer
 supply light, steer supply
 moderate. Sales reported on
 42 loads of steer and heifer
 beef.

STEER BEEF

31 Loads
FOB Omaha Basis
 Choice 3 700-900 lbs. 103.00-
 103.25 2.00-2.25 lower.
 Choice 3 800-900 lbs. 102.00.
 Choice 2 600-700 lbs. 103.25.
 Choice 4 700-900 lbs. 96.00.

FOB Amarillo Basis
 Choice 2-3 500-700 lbs. YG 3
 105.00-105.50 mostly 105.50,
 YG 2 106.00-106.50 mostly
 106.50
 Good 2-3 600-900 lbs. 104.00
 packer to packer

HEIFER BEEF

11 Loads
FOB Omaha Basis
 Choice 3 500-700 lbs. 102.00-
 103.00, late 102.00, 2.90-3.00
 lower late
 Choice 4 500-700 lbs. 96.00.
 Limited test cow beef
 steady to 1.00 lower.

COW BEEF

FOB Omaha Basis
 Utility 450&up lbs. 83.00-
 84.00 west steady 1.00 lower
 (brkg) 3-4
 Utility 400&up lbs. 87.00
 88.00 2.00-3.00 lower than
 Monday (bng) 2-3
 Canner & Cutter 350&up
 95.00 west

PRIMAL BEEF CUTS

6 Loads
FOB Omaha Basis
FORES: 130-180 lbs. 91.00-
 91.50.

ARM CHUCKS: 75-120 lbs.
 94.00.
BONELESS PROCESSING
BEEF/TRIMMINGS
13 Loads
 50 pct chem lean fresh
 48.50-50.50.

Compared to Tuesday's
 2:15 report: Fresh Pork
 Loins 50-4.75 lower. Boston
 Butts steady. Sdls Bellies
 steady .75 higher. Trading
 light; demand light. Hams
 and picnics not tested. Sales
 reported on 44 1/2 loads and

25 loads of trimmings and
 variety meats.

FRESH PORK CUTS

LOINS: 14/Dn lbs. 81.00-
 81.25; 14-17 lbs. 78.25-80.25,
 2.75-4.75 lower; 14-17 lbs.
 88.25 TRIMMED; 17-20 74.00-
 74.50, 50-3.00 lower; 17-22 lbs.
 74.00; 20&up lbs. 68.00, 1.00
 hghr than Fri.

BOSTON BUTTS: 4-8 lbs.
 61.00 steady.
SPARERIBS: 3/Dn lbs.
 80.00.

BELLIES, Sdls: 10-12 lbs.
 26.00-26.50, steady; 12-14 lbs.
 33.75-35.00, steady-50 higher;
 14-16 lbs. 34.75-35.00, steady-
 75 higher; 16-18 lbs 33.75-
 34.75, 75-1.75 lower than
 Monday.

BNLS CT BUTT. 1 1/2-3
 lbs. 98.00

VARIETY MEATS

Feets, toes on 17.00.
 Livers, lrg Box 24.00.
 Neck Bones 12.00-13.00.
 Ears 19.00.

PORK TRIMMINGS BONELESS/PROCESSING (Chemical Lean)

72 pct. lean trmngs fresh
 63.25; 72 pct bnls pics fresh
 65.75-69.00; 72 pct bnls pics
 frozen 68.00-71.00; 85 pct
 cheek meat frozen 80.50; 95
 pct blade meat frozen 89.50-
 90.50.

Lebanon Valley Auction

Fredericksburg, Pa.

Tuesday, March 11

Report supplied by PDA

CATTLE 195. Compared
 with last week's market,
 slaughter steers mostly
 steady. Slaughter cows weak
 to \$1.75 lower, spots to \$3
 lower. Couple High Choice
 and Prime slaughter steers
 63.35 & 65.60. Choice 2-4, 1035-
 1305 lbs. 66.85-68.25, two 68.75
 & 69.10, Good 63.00-67.10, one
 at 67.85, Standard 60.50-63.00,
 few Utility and Low Stand-
 ard 55.00-59.50. One Choice
 slaughter heifer at 85.50,
 couple Standard 53.00 and
 55.00. Utility and Com-
 mercial slaughter cows
 50.75-53.35, few 54.25, Cutters
 49.00-51.50, few to 54.00,
 Canner and Low Cutters
 46.25-48.85, few Shells down
 to 42.75. Couple Choice
 slaughter bullocks 65.35 and
 66.60, few Good 63.25-65.75,
 Standard 61.00-63.75, few
 Utility and Low Standard
 57.00-59.25. Few Yield Grade
 No. 1, 1470-1815 lbs.

slaughter bulls 64.35-68.25,
 #2, individual 1425 lbs. at
 66.25.

CALVES 260. Vealers
 uneven. One Prime vealer at
 117.00, Choice 97.00-121.00,
 Good 81.00-103.00, Standard
 and Good 71.00-81.00, 65-90
 lbs. 60.00-70.00, few Utility
 55-95 lbs. 30.00-56.00. Farm
 Calves: Holstein bulls 90-120
 lbs. 70.00-97.00; Holstein
 heifers 75-140 lbs. 103.00-
 217.50, mostly 118.00-155.00.

HOGS 261. Barrows and
 gilts fully 50 cents lower. US
 No. 1-2 200-250 lbs. barrows
 and gilts 36.85-37.50, few lots
 down to 36.50, No. 1-3 200-260
 lbs. 36.10-36.85, No. 2-3 200-
 260 lbs. 35.00-36.10, No. 1-3
 175-185 lbs. 30.25-32.10. Sows
 uneven US No. 1-3 275-500
 lbs. sows 34.00-36.35, few
 37.75, No. 2-3 285-605 lbs.
 31.00-38.25. Boars 30.25-31.25,
 one at 33.25.

FEEDER PIGS 12. One lot
 US No. 1-3 50 lbs. feeder pigs
 at 35.50 per hundredweight.

SHEEP 1. Not enough of
 any one grade to establish a
 market.

Middleburg Auction

Tuesday, March 11

Report supplied by PDA
CATTLE 243. Compared
 with last Tuesday's market,
 slaughter cows \$1 lower.
 Choice 950-1350 lbs.
 slaughter steers 65.85-68.25,
 one at 69.75, Good 64.00-66.60,
 Standard 58.00-64.75. Few
 Choice slaughter heifers
 63.35-68.85, few Good 61.75-
 63.60. Utility & Commercial
 slaughter cows 49.75-54.25,
 couple to 56.75, Cutters 48.75-
 52.75, Canner & Low Cutter
 46.00-49.75, Shells down to
 43.00. Few Good slaughter
 bullocks 64.75-66.50. Few
 Yield Grade #1 1300-1780 lbs.
 slaughter bulls 61.85-67.85.
 Few Large Frame #1 and #2
 500-850 lbs. feeder steers
 63.00-70.00, few Medium
 Frame #2 350-450 lbs. 83.00-
 89.00; few Large Frame #1
 and #2 600-800 lbs. feeder
 heifers 57.00-62.50.
CALVES 141. One Prime

PERKIOMENVILLE LIVESTOCK & SALES
 Perkiomenville, PA
 Sale Every Monday
 Egg Auction - 12 Noon
 Dairy Cows - 2 P M
 Hogs - 4 P M
 Steers, Bulls, Cows -
 Starting at 5 P M
 Also
 Flea Market
 starting at daylight
 PH: 215-234-4733

vealers at 130.00, Choice
 110.00-126.00, few Good 90.00-
 109.00, Standard & Good 70-
 90 lbs. 70.00-83.00. Farm
 calves, holstein bulls 85-125
 lbs. 90.0-136.00, mostly
 100.00-125.00; holstein
 heifers 80-130 lbs. 147.00-
 247.50, mostly 180.00-220.00.

HOGS 122. US No. 1-2 210-
 235 lbs. barrows & gilts 36.10-
 36.25, No. 1-3 210-235 lbs.
 35.35-35.60.

FEEDER PIGS 278. US
 No. 1-3 15-20 lbs. feeder pigs
 13.00-17.00 per head, No. 1-3
 25-45 lbs. 19.00-27.50, No. 1-3
 50-75 lbs. 36.00-41.00 per
 head.

SHEEP 3 Not enough of
 any one grade to establish a
 market.

HOGS 530. (Monday,
 March 10, 1980). Barrows &
 gilts \$2 to \$2.25 lower. US No.
 1-2 210-235 lbs. barrows &
 gilts 36.50-37.75, No. 1-3 190-
 250 lbs. 36.00-36.60, No. 2-3
 190-290 lbs. 34.25-35.75. US
 No. 1-3 300-500 lbs. sows
 32.00-37.25. Boars 27.00-28.75.

Western Maryland Market

Westminster, Md.

Tuesday, March 4

Report supplied by auction
BUTCHER CATTLE: Fat
 Steers good run, active
 bidding; Top 71.00; Good-
 Choice 65.00-71.00; Standard
 58.00-64.00; Heifers Choice to
 67.25; Cows Active! \$1.00

higher; Good Cows 54.00-
 55.50; Standard & Utility
 51.00-54.00; Canners 48.00-
 51.00; Shelly 48.00 Down;
 Bulls few 1500-1700 lbs. 62.00-
 64.75; few 900-1200 lbs. 57.00-
 60.00.

BUTCHER HOGS: steady
 to 25 cents lower. Top Hogs
 36.85; Bulk 200-225 lbs. 36.35-
 36.75; 230-260 lbs. 36.35-36.85;
 170-190 lbs. 30.00-34.00; 290-
 350 lbs. to 37.75; Sows 350-600
 lbs. 32.00-36.00. **BOARS** 400-
 650 lbs. 30.60-31.25.

VEAL CALVES: steady
 prices. Tops to 119.00; Good-
 Choice 100.00-119.00;
 Standard 85.00-100.00; Light
 calves 70.00-80.00; Weak &
 Rough 70.00 Down.

CALVES RETURNED TO FARM: Holstein Heifers 95-
 115 lbs. 150.00-200.00;
 Holstein Bulls 95-120 lbs.
 110.00-135.00.

LAMBS: Good 95 lbs. at
 64.00.

STOCK CATTLE: good
 demand. Stock Steers Good
 & Choice 400-700 lbs. 70.00-
 91.00; Stock Heifers Good &
 Choice 350-600 lbs. 55.00-
 73.00; Stock Bulls Good &
 Choice 400-650 lbs. 55.00-
 85.00.

PIGS AND SHOATS: large
 run, \$2.00-4.00 higher! By the
 head 15-30 lbs. 10.00-24.00; 30-
 60 lbs. 25.00-35.00; By the Lb.
 90-160 lbs. 29.00-34.00.

FRIDAY, MARCH 21 ON THE FARM MONTHLY BRED GILT SALE

Sale to start promptly at 1:00
 Every 4 weeks

Located 18 miles south of Lancaster, PA, 6 miles
 south of Quarryville, take Rt. 272 to Little Britian, turn
 north, follow Little Britian Rd. to Jackson Rd., 2nd
 farm, OR Take Rt. 222 out of Quarryville to Cedar Hill
 Rd. to Little Britian Rd. to Jackson Rd. Watch for sale
 arrows.

50 to 60 Head
 more or less

2 & 3 Way Crossbred Gilts
York & Hampshire & Duroc

Due to farrow 3 days to 4 weeks after sale date. Now
 everything vaccinated for both Lepto & Erysipelas,
 wormed and sprayed for lice.

Local trucker available.
 No hogs sold on commission.

LAST SALE AVERAGE \$177

CHRIST A. BEILER
 RD 2, Quarryville, PA
JOHN B. STOLTZFUS

Abe Diffenbach
 Auctioneer

NEXT SALE DATE - APRIL 18

NEW HAY AUCTION EVERY FRIDAY - 1:30 P.M.
 Straw, Grain, Firewood, etc.
Tack & Misc. Consignments 3:30 PM
HORSE AUCTION - 7:30 P.M.
BEIL'S SALES
 1 Mi. North of York Springs on Route 15
 Hay - 717-334-7724, David W Martin, Auct./Mgr.
 Horse - 717-528-8218, Wm Artrip, Auct

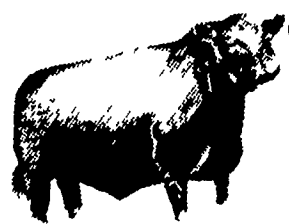
LEESPORT MARKET & AUCTION, INC.

North end of Leesport, PA

Turn East off Route 61

"WHERE FRIENDS MEET"

BERKS COUNTY'S ONLY WEEKLY CATTLE & SWINE AUCTION— WEDNESDAY AT 1 P.M.



FARMER'S MARKET Every Wednesday, 12 NOON TO 9 P.M.



Garden Fresh Fruits & Vegetables - Bakery Fresh Cakes, Pies and Buns
 - Butcher Fresh Meats & Cheese - Sporting Goods - Clothing - Furniture -
 Jewelry - Used Items & Collectibles.

PHONE: 215-926-1307

LEROY WEIST & JOHN WEIST, MGRS.

SUPER DOL

THE AMAZING "TIME RELEASE" BUFFER
 CONTAINING MAGNESIUM
FOR RUMINANTS



CALL OR WRITE **wmb** CORPORATION

960 E. GREEN ST PASADENA CA 91106 • (213) 449-1667
 5360 MERLE HAY RD DES MOINES IA 50323 • (515) 282-5415
 141 FIELDCREST AVE EDISON NJ 08817 • (201) 387-2082