

# York Holstein Association talks breeding, feeding

DELTA — Paul and Kathy King's Kingway Farm was the setting of a recent barn meeting held by the York County Holstein Association Tuesday.

Starting off the afternoon, King went down to the barn and talked about each of his cows.

Kingway Farms has a rolling herd average of 16,500 milk and 650 fat, and an average of 106 percent BAA. King feels that to develop a top herd of cows, you need to bring in new blood.

He suggests not only using good bulls, but buying cows from other sources to induce new maternal lines.

Speaker for the afternoon was Al Lithgow of the X-tra Factors Corporation, Ephrata. X-tra Factors Corporation is a nutritional consulting firm.

Lithgow started out by stating the dairy cow originally produced just enough milk to feed her

calves. Now man has turned her into a factory that produces enough milk for many People.

"Even though this is true," stated Lithgow, "Dairy cow nutrition is the most lacking nutrition of all livestock."

Lithgow then discussed how to feed cows for a 20,000 pound herd average. The main things to consider, he said, are good management, and a well-balanced feeding program.

Make sure there is some kind of a buffering agent in your feed such as bicarbonate of soda, sodium benzoate, or a yeast culture, he advised.

Minerals are also very important. Farmers need to test their feeds and roughages to see the mineral content and then plan accordingly for minerals to be fed.

A well-balanced ration will help your cows to produce more milk.-PG

## PENNSYLVANIA AGRICULTURE



WE'RE GROWING BETTER

# Barley named

(Continued from Page A1) designated farmlands for use as highways, developments, or for disposal of solid or liquid wastes.

The Board will review such plans and see if the land is suitable for the proposed use or whether other less valuable or non-agricultural land is available for the project.

Both Barley and Benner must have their nominations approved by the State Senate.

According to the Governor's Office, the nominations have been entered on the Senate calendar.

Barley said he was working this week on completing the necessary papers, including a financial disclosure statement, required for the position.

He said Hallowell mentioned the possibility of his serving on the Board and he had agreed.

"I feel it is an important area. When asked to contribute, I was willing to do so," Barley said.

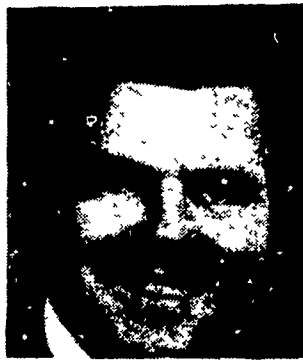
The Barley operation, where John farms with his brother Abram, was threatened in 1977 by a landfill. An active legislative and media campaign eventually saved the farm.

This Board will review projects such as the one which threatened the Barley farm.

"Naturally, since we were involved with this sort of thing, I decided to serve," Barley said.

The members of the Board, who serve without pay, will review any proposed farmland condemnation by the Commonwealth.

Barley said he does not figure PennDOT will be too



John Barley busy with new construction because of the present economic slowdown.

Although he did not see the road construction area as a busy one, he added he really was not sure of how much of his time the Board would require.

In addition to experience fighting a landfill on his home farm, Barley brings a broad background as a dairyman since 1963.

He is co-chairman of the political education program of the Lancaster County Farmers' Association, director of the Lancaster County Holstein Association, and former district president of the Inter-State Milk Producers Co-op.

The Barleys have been recognized as Master Farmers.

John Barley's fellow nominee, Charles Benner, is a 39 year old dairyman who has been farming with his father since 1958 in a partnership at Mt. Pleasant Mills Farm.

Benner has served as

president of the Snyder County Farmer Association and the County Extension Service.

He also has been an officer of the County Holstein Club, the Snyder unit of Northeastern Breeders Association, and his DHIA.

He brings experience in planning from his participation as agricultural representative in Snyder County on the Susquehanna University rural need committee and as a PFA program evaluation committee member.

**ECI**

**DAIRY SUPPLIES**

**CREUTZBURG INC.**  
Farm Store

**NOW AVAILABLE**

**On The Farm Service**  
Call **717-768-7181**

- CLEANERS
- SANITIZERS
- MILKSTONE REMOVER
- UDDER WASH
- IODINE TEAT DIP
- MILK FILTERS
- ALL TYPES BRUSHES
- MILKER INFLATIONS
- DAIRY TUBING

Send for **FREE CATALOG**

**CREUTZBURG, INC.**  
Lincoln Highway East Box 7  
Paradise PA 17562

NAME \_\_\_\_\_

STREET \_\_\_\_\_

CITY \_\_\_\_\_

STATE \_\_\_\_\_ ZIP \_\_\_\_\_

## SPORTING CHOICE

For 20-mile-a-day comfort, sportsmen choose Red Wing Irish Setters.

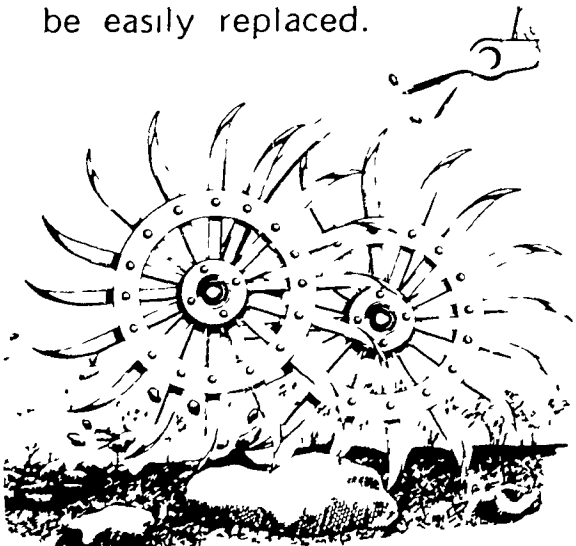
\*Sizes 6-16  
Widths AA-EEEE  
\*Not all sizes in all widths

### BOOKS SHOE SERVICE

107 E STATE ST  
QUARRYVILLE, PA 17566  
717-786-2795  
CLOSED WEDNESDAYS

# THE MOST ADVANCED DESIGN IN ROTARY HOES IS BY M&W!

The M&W Rotary Hoe controls weeds better because each wheel works independently, free to follow the ground contour without being effected by a neighboring wheel. Spring loaded arms assure maximum ground contact. Maintenance is kept to a minimum with replaceable, permanently lubricated ball bearings on each wheel and self sharpening forged teeth can be easily replaced.



Each wheel is mounted on its own arm, free to follow the ground contour for maximum weed control and crust busting

With rigid models available

in 15', 21', 28' and 30' widths, and hydraulic fold models in 21', 25' and 30' widths, M&W has a size for every farm. Standard features such as the M&W E-Z hitch make the M&W Rotary Hoe an even better investment. Take a closer look at the most advanced design in rotary hoes today at your nearest M&W dealer or write for more information.



M & W GEAR COMPANY GIBSON CITY ILLINOIS 60936



**HAMILTON EQUIPMENT, INC.**

WHOLESALE DISTRIBUTORS  
567 South Reading Road,  
Ephrata, Pennsylvania 17522