

AGRICULTURE DAY MAR. 20

Cattlemen meet

(Continued from Page A1)

association from a group of eight contestants. she has gotten involved in agriculture mostly from Penn State's college of ag. Laura hails from Beaver County, near the town of Clinton. She said she is not actually from a farm, but Laura is studying to become a veterinarian, hoping to have a mixture of

large and small clients in her practice. As far as where she hopes to study veterinary medicine, she smiled and said she didn't want to say at this point.

Laura has had experience working with large animals. She has two Morgan horses of her own, a mare and a foal.

At Penn State, Laura is a member of the Block and Bridle Club. She has participated in the annual Little International since she was a freshman.

In her first year as an exhibitor, Laura showed a Hereford heifer. Last year, she said she decided to show a horse.

But she eventually got to show all of the species in competition for showman of the year. Her smile was well-earned when she said she was the reserve grand champion showman at last year's show.

Laura received her crown from last year's queen, Karen McCullough, Mercer.

The first runner-up was Joanne Lynn Hicks, Germansville, with Tracy Higgins, Chadds Ford, as the second runner-up.

Speaking at the banquet was Glen Klippenstein, co-owner of Glenkirk Farms, Maysville, Mo.

Klippenstein was a 1959 animal husbandry major at Penn State. He said he had seven people he considered to have influenced his life, with Penn State's Dr. Thomas King and Professor Glenn Kean having a spot on his list.

Klippenstein's farms are in the purebred beef business. He said they raise Polled Herefords, Angus and Hereford cattle.

"Actually," he said, "we're in the bull business. We raise about 900 calves every year and sell about 350 of them as bulls. We've sold to every state in the nation but three, and to many other countries."

Concerning the current trend to larger framed beef cattle, Klippenstein stated, "I like adequate frame, but if it goes beyond a certain point, we give up functionality. We lose fertility, milkability—and those are too important."

He concluded that the cattlemen have the responsibility to cull out the trash and produce a better seed stock. As a purebred breeder, he closed by saying, "My only reason for being in business is to support the commercial cattlemen by producing the best possible animal."

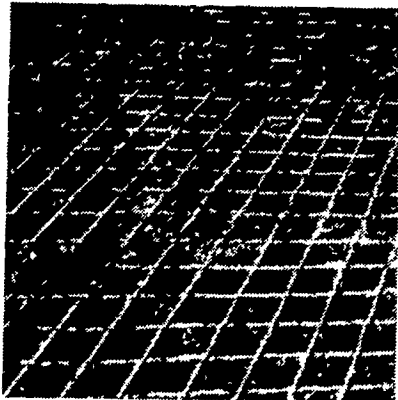


Laura Weinberger, Clinton, was crowned the Pa. Cattlemen's Queen for 1980 by last year's queen, Karen McCullough.

Slick Problem Areas?

DAIRYMEN: CONCRETE-GROOVING Cuts Grooves in Concrete Floors

- PREVENT SPLITS
- INSTALL IN HOLDING AREAS
- IMPROVE HEAT DETECTION
- INSTALL IN FEEDING AREAS



Grooves 1/2" wide x 1/4" deep - 4" apart

- PREVENT BROKEN LEGS
- ELIMINATE COWS SKIDDING
- PREVENT CRACKED CONCRETE
- INSTALL IN ALLEYS

Why not join the increasing number of dairymen throughout the Eastern states who now receive profitable benefits from this service.

CONTACT US TODAY!

CONCRETE GROOVING, INC.

MERLE BECKER

399 S. Reading Rd., Ephrata, PA 17522
PHONE (717) 733-7589

BUSTER D

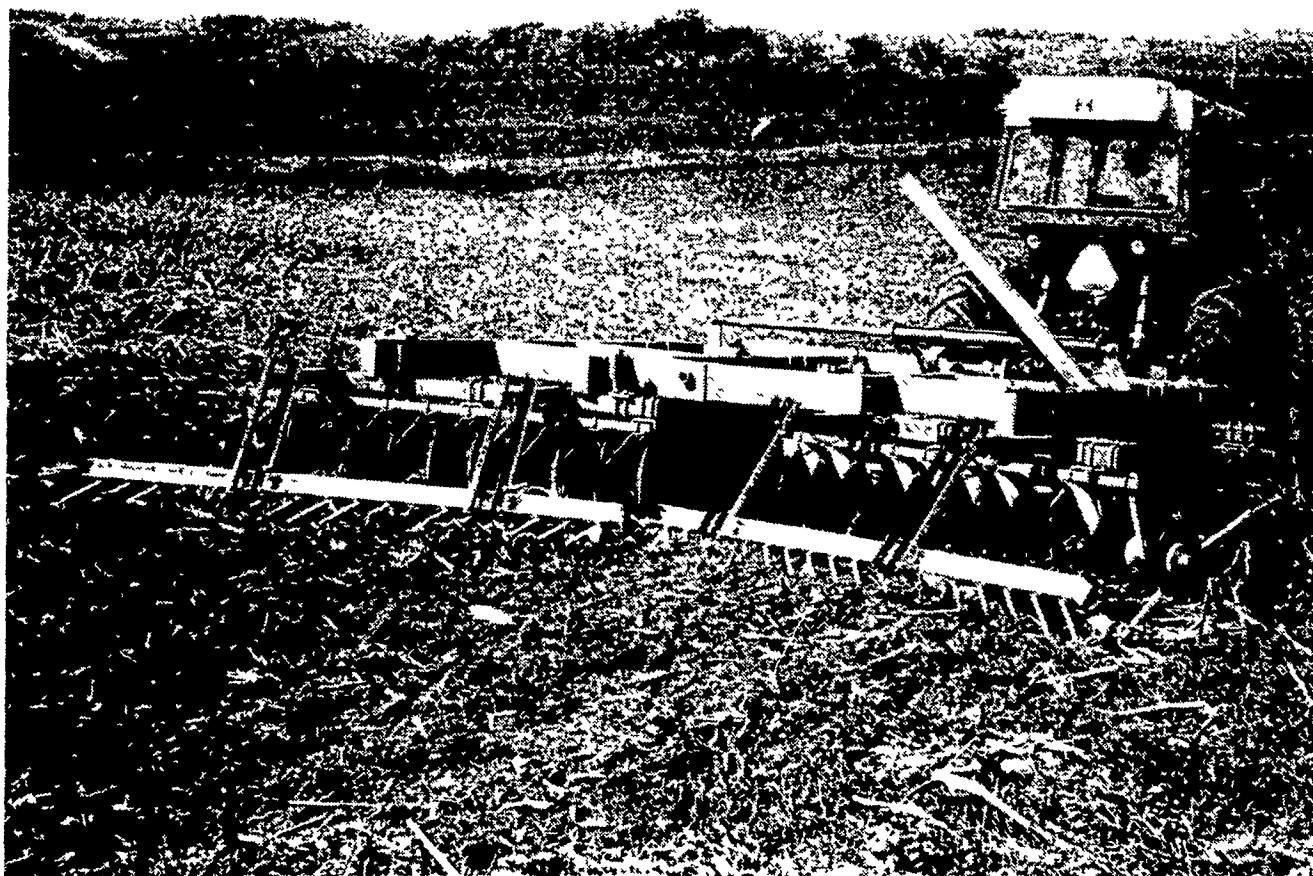
MINIMUM TILLAGE EQUIPMENT

Midwest DAR

Midwest Industries Inc
Ida Grove Iowa 51445

RIGID TOOTH HARROWS

FOR YOUR PLOWS, CHISEL PLOWS, DISKS & FIELD CULTIVATORS



HAMILTON EQUIPMENT, INC.

WHOLESALE DISTRIBUTORS

567 South Reading Road, Ephrata, Pennsylvania 17522 Phone (717) 733-7951
Exit 54 on Interstate 81, Raphine, Virginia 24472 Phone (804) 377-2628

REGISTERED
BELGIAN
STUD SERVICE
Excellent Size
& quality

With White Mane
& Tail.

(Also White face)

Stud Fee **\$40**

w/return
privilege

Lancaster Co.
EDWIN REIFF
PH: 717-656-6801