



The stirrup historians believe was invented during the Dark Ages.

Regular tractor pull winner trys his hand at waxy corn

RINGOES, N.J. — For a number of Lancaster Farming readers, there's little new when they see R. Gregory Manners enter Pennsylvania and New Jersey tractor pulls with his special Case 830. He usually does well.

But most fans would be surprised to see the significant farming changes he and his father, Robert M. Manners, have made at home where that twin-engine 900-horsepower "thundermaker" recharges between competitions.

They live at Terraceland, a showplace farm near Ringoes in Hunterdon County, N.J., where they milked 100 head of Holsteins until they were sold last March. Now they feed 70 head -- about half replacement heifers, half to be sold as beef. The dairy is closed and they're now enthusiastic crop growers.

"When we decided to quit dairying, we crossbred Holsteins with Herefords to get black, white-faced beef animals that have desirable size and temperament," Gregory explains.

Although they were giving increased attention to their corn production, for feed, it was urban problems that triggered the switch. Chronically short of labor, they had finally lined up two helpers who planned to live with their families in

separate parts of a large house Robert owns in nearby Wertsville. But the township adjustment board turned down multi-family dwellings.

Then across the lane from Terraceland, a farm was subdivided into 10-acre plots for \$200,000 homes of commuters.

A few years earlier, affluent city dwellers who unsuccessfully tried to

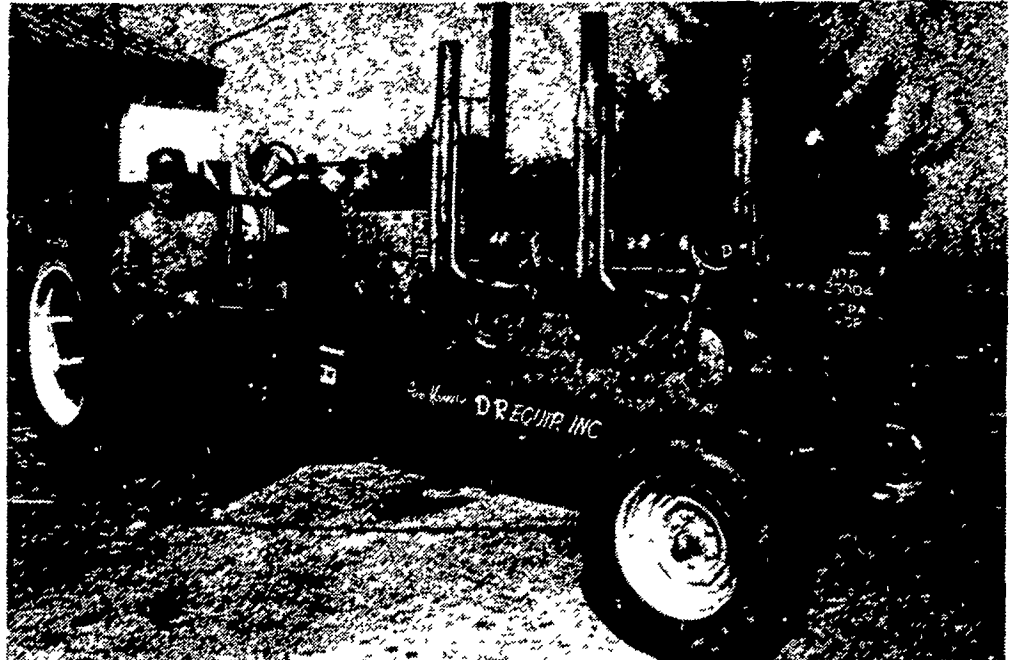
establish money-making hobby farms in the area, told the Manners: "We just love your countryside but can't something be done about the machinery noise at night, and the barn smells?"

So last spring the Manners increased corn plantings to 400 acres, including 100 of waxy. They planted 100 acres of soybeans and also baled 200 acres of timothy and alfalfa hay. It was the

first time they'd tried waxy corn and it caused them to take "The Wall Street Journal."

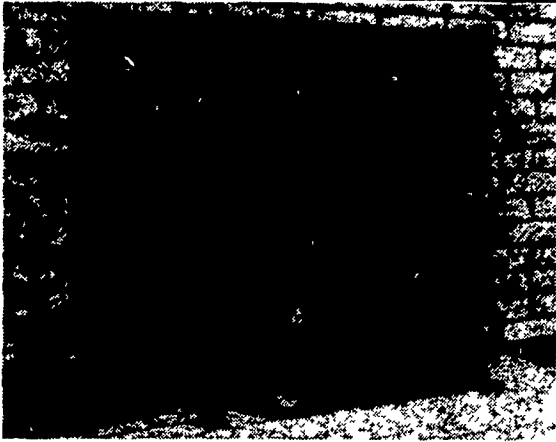
"Our waxy corn is grown under contract with A.E. Staley Co., Morrisville, Pa., for cooking oils designed for TV dinners that must be cooked, frozen, and reheated," Gregory says.

"They pay a 35-cent premium over Chicago (Turn to Page D6)



Trophy big enough to honor New Jersey's best tractor puller in his class for 1979 is hefted by R. Gregory Manners. In competition, he doesn't seem to notice the roar of his own 900-horsepower "thundermaker." But he claims working near other tractors at indoor meets can be uncomfortable without ear protection.

ALASKA KODIAK WOODBURNERS



FIREPLACE INSERT

- Fits into your existing fireplace complete with all parts, including blower and instructions for easy installation.
- Specifications (Large)
Burning time 10 to 12 hours. Heating capacity with blower, 2,500 Sq. ft., without blower 2,000 Sq. ft. Fireplace minimum opening 23½" high x 32¼" wide x 15¼" deep.

Effective Now Factory Authorized
Super Sale of 1980

MANY OTHER MODELS AVAILABLE



CHESTER B. NOLT

30 S. Hershey Ave., Bareville
Leola, Pa. 17540
717-656-6898

STORE HOURS:

Closed Mon. & Tues., Open Wed., Thurs., Fri. 10 to 8,
Sat. 10 to 4. Other hours by appointment

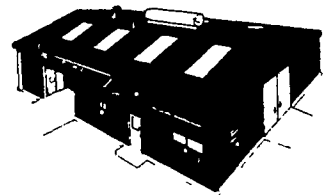


VERNON MYERS, INC.

Steel Buildings & Grain Storage

R.D. 4 - Box 845
Lebanon, PA 17042

For More Information Call (717) 867-4139



OPEN HOUSE

WEDNESDAY, MARCH 26, 1980

Location: Lebanon County Expo Bldg.,
Evergreen and Cornwall Rds., Lebanon.

Two Sessions Beginning At
1:00 P.M. and 6:00 P.M.

Free Refreshments

1. Presentation on grain bins and storage equipment
2. Presentation of SUKUP grain handling equipment

3. Presentation on grain drying, dryers, and aeration
4. Presentation on bucket elevators
5. Safety briefing

THE GRAIN DRYING EXPERTS WILL BE IN TOWN. COME AND LEARN NEW MODERN TECHNIQUES TO GET MORE EFFICIENT USE OUT OF YOUR PRESENT GRAIN SYSTEM AND PROPER PREVENTIVE MAINTENANCE TO AVOID COSTLY BREAKDOWNS.

Mail Coupon Today!

- SEND STEEL BUILDINGS LITERATURE
- SEND GRAIN STORAGE LITERATURE

NAME _____

ADDRESS _____

CITY _____

STATE _____

ZIP _____

TELEPHONE _____