

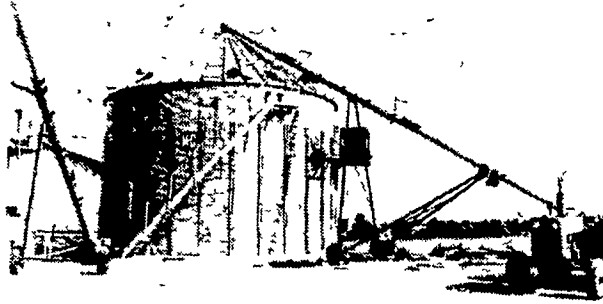
Farm Business News



Leon E. Martin of Agri-Equipment, Inc., R4 Ephrata, PA, received an appreciation certificate from Chore-Time Equipment, Inc., Milford, Indiana, for serving on the company's 1979 Distributor Advisory Committee. Presenting the certificate at Chore-Time's sales meeting in South Bend, Indiana, is Forrest Ramser, right, Senior Vice President of Chore-Time.

Level-action discs from John Deere

Nine John Deere Level-Action disks with many weight and width combinations are being offered to area farmers. The 200 and 300 Series Disks feature an exclusive new Dura-Flex gang bearing as standard equipment. This bearing has three extra-long flexible lips (see photo) that maintain contact with the inner race of the bearing yet resist wear. The wide, fourth lip also works with an extended



flange or cast housing to give the bearing extra room to self-align. Bearings are backed with a two-year warranty. This warranty also applies to the bearings on the new 455 Offset Disk.

Another important new feature for farmers in this area is the combination scrapers, new on the 200 series disks. You adjust capscrews to change from rigid scrapers in abrasive soils to spring-loaded scrapers in sticky soil. These scrapers are also standard on the 300 series disks.

Two 100 Series Disks are in the 30 to 85 pounds per blade class. The 105 integral and 115 drawn rigid are ideal for preparing seedbeds and chopping light cover. In the popular 75 to 125 pounds per blade weight class, Deere has the 200 Series Disks. The 215 works from 11 feet 5

inches to 15 feet 8 inches. The two and three section 235 disk reaches from 17 feet one inch to 25 feet seven inches. The 215 and 235 are available with 7 1/4- or 9-inch blades spacings.

The heavyweight 300 Series includes the .315, 335, and 375 level-action disks. Each features easy crank leveling, combination scrapers, new bearings with cast housing, heavy-duty gang components, and a choice of nine or eleven blade spacing.

The 315 Rigid comes in widths from 12 feet 2 inches to 15 feet 8 inches. Weight per blade range is 120 to 150 pounds.



This continuous in-bin dryer from the Mathews Company has been designed to eliminate the most common problems found in other in-bin dryers currently on the market. In addition, it has proven high capacity results at low per bushel costs, and it has energy-saving features necessary for profitable operations.

Patents are pending on the unique design of the Drybine system. As wet grain enters the top of the bin, it enters the drying section as harvested with no need for a wet holding bin. The upper drying chamber holds up to 2250 bushels of wet grain at a depth of up to four feet. Every seven minutes a continuous flow auger makes a complete revolution around the upper drying floor, drawing the dried grain into the lower cooling chamber. Outside air is

drawn in at the bottom of the cooling chamber. As the cool air comes in contact with the dried grain, the air increases in temperature and rises, helping to dry the grain on the upper level.

The bin has a drying capacity of 355 bushels an hour. The drying process is fast, while the cooling process is slow, eliminating stress cracks and damage caused by fast cooling. The process is very similar to dryeration.

For more information and early season discounts contact: Hershey Equipment Co., Inc., Lancaster, Pa. or, contact Mathews Company, Box 70, Crystal Lake, Illinois 60014.

We Specialize In Aerial Work Using Our Twin Bucket Boom Truck

Extends To 55 Ft

ELECTRICAL CONTRACTING

Specializing In **AGRICULTURAL WIRING**

Also Residential, Industrial And Commercial Work
Free Estimates

C. M. HIGH CO.
320 King St
Myerstown PA 17067
Phone 717-866-7544

We Have Poles In Stock 25 30 35 & 45

CHEESE

A SERVICE FOR THE FARMERS OF PENNSYLVANIA WHOSE TIME HAS COME



ENVIRO-C, P.O. Box 49, Middletown, PA 17057

An Open Letter to the Farmers and other Property Owners in Pennsylvania.

Do you feel that you have been unjustly exploited by the public utilities and big business?

Vague or undefined easements across your property for highlines, oil & gas pipelines, underground cables etc. Unfair crop damage settlements, loss of use of your land during construction or repair of facilities.

Loss of precious top soil, the loss of which is not taken into account by either the utility or the contractor on the job. Fouling of streams and water ways by failure of the contractor to meet specifications set up by the Department of Environmental Resources.

Damage claims that are costly and important to you, but in most cases to small to be profitable to turn over to an attorney.

Contact Enviro-C land management-equitable damage settlement, - equitable fee for handling your claims from beginning of work till settlement.

Legal consultation included if needed, why be exploited without recourse at a reasonable cost. Contact Enviro-C P.O. Box 49, Middletown, Pa. 17057 Phone: 717-944-4212

For Additional Information on Enviro-C Mail Coupon Below:

I would like additional information
On Enviro-C
P.O. Box 49, Middletown, Pa. 17057

NAME _____

ADDRESS _____

PHONE NO. _____

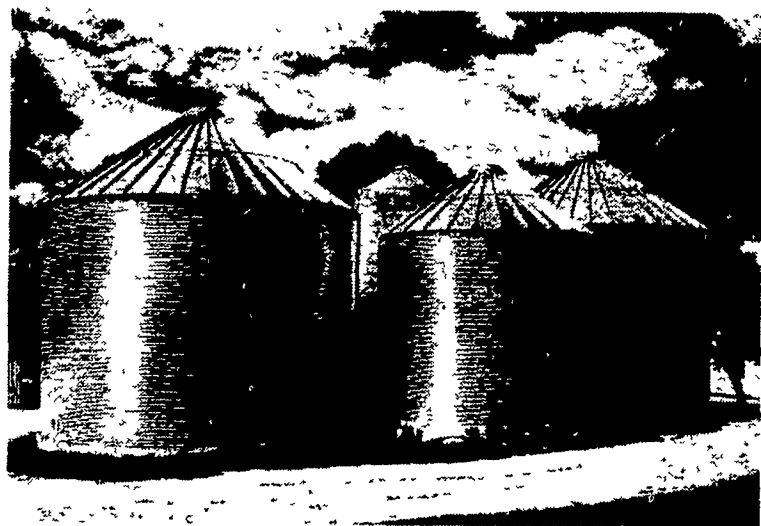
COLD WEATHER COLD CASH SAVINGS!

ON EVERY WINTER PURCHASED BIN

See your BROCK dealer and buy your new Brock grain bin

Winter time is the best price time. It is also the time to order to make sure your bin is erected and ready for the next harvest.

There's cold cash to be saved now.



BROCK®

DISTRIBUTORS FOR MC DRYERS, BROCK BINS, BAZOOKA AUGERS and BUCKET ELEVATORS

H
H

HERSHEY EQUIPMENT COMPANY, INC.

SYCAMORE IND. PARK
255 PLANE TREE DRIVE
LANCASTER, PA. 17603
(717) 393-5807

Route 30 West at
the Centerville Exit

Designers of Quality Systems for Poultry, Swine and Grain Handling.