

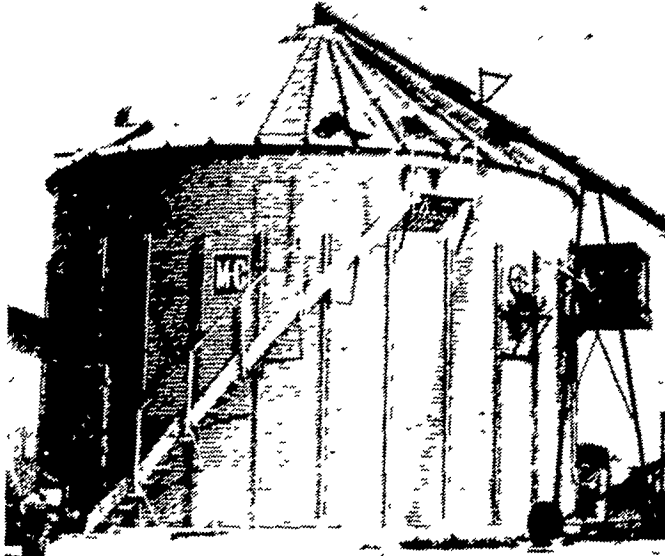
GREAT GRAIN HANDLING SYSTEMS BEGIN WITH GOOD PLANNING AND M-C DRYERS

Now Available!

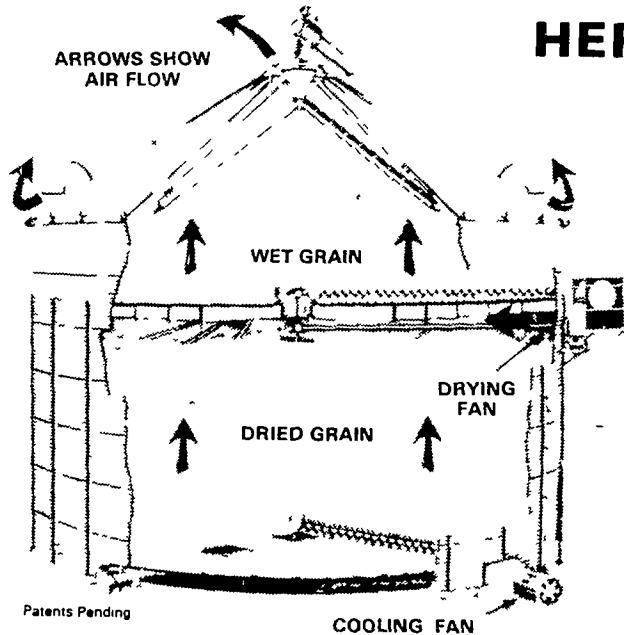
M-C DRYBINE™

The ENERGY SAVING IN-BIN DRYING SYSTEM

The new Mathews Continuous In-Bin Dryer is a combination storage drying and cooling bin designed to save you money. It is efficient, fast, easy to manage and costs less to operate. The drying process is fast, while the cooling process is slow, eliminating stress cracks and damage caused by fast cooling. There is nothing else like it on the market. The Mathews design requires no wet holding bin or separate bin for cooling.



- Saves energy for profitable operations
- Eliminates the most common problems found in other in-bin dryers
- Proven high capacity results (357 bushels per hour)
- Low per bushel costs



HERE'S HOW IT WORKS...

As wet grain enters the top of the bin, it flows into the upper drying chamber as harvested, with no need for a wet holding bin. This upper chamber holds up to 4 feet of wet grain (2250 bushels).

Every seven minutes, a continuous flow auger makes a complete revolution around the upper drying floor, drawing the dried grain into the lower cooling area.

Hot air is introduced under the upper floor to dry the wet grain and to heat the surface of the grain that is distributed into the lower cooling chamber. The air that is used for cooling the grain picks up heat during the cooling process. This heated air is then used again in the drying process, saving on fuel costs.

When not being used for drying, the bin will store 8500 bushels of grain.

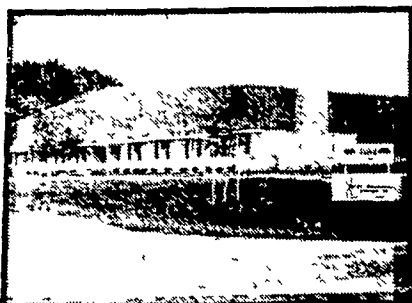
BIN DRYER TEST FOR FALL OF 1979

Ambient Temperature	43°	Moisture (Average Incoming)	28.3
Plenum Temperature	190°	Moisture of Dry Corn	13.1
Static Pressure	1.5	Points Removed	15.3
Average Fuel Costs	51.9¢/gallon	Bushels/hour	356.8
Gallons LP Gas ('79)	1,420	Total Drying Time	40 Hours 57 Minutes
Bushels/gallon	10.3	Unload (Tapered)	
Cost/bushel05	Auger Time On	23 Hours 35 Minutes
Bushels Dried ('79)	14,629		

THIS SYSTEM WILL FIT ANY 30 FT. x 7 RING BIN

**WE STOCK M-C PARTS AND
PROVIDE FACTORY TRAINED SERVICE
PERSONNEL**

**DISTRIBUTORS FOR: MC DRYERS, BROCK BINS,
BAZOOKA AUGERS and BUCKET ELEVATORS**



H

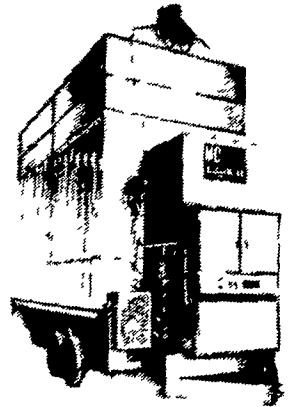
**HERSHEY EQUIPMENT
COMPANY, INC.**



HIGH SPEED CONTINUOUS GRAIN DRYERS

THE PROVEN WAY TO:

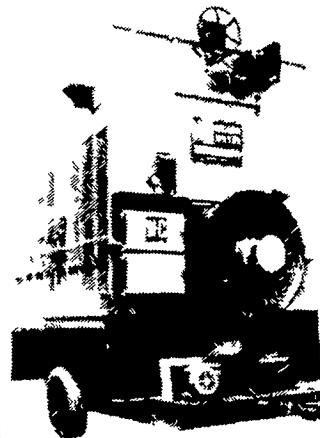
- Freedom From Weather Worries
- Minimum Field Losses
- Highest Quality Finished Crops
- Time and Labor Savings
- Better Prices
- Increased Energy Savings



ELECTRIC CONTINUOUS FLOW MODELS
CONTINUOUS FLOW MODELS - TRACTOR PTO
DRYERATION CAPACITIES UP TO 1400 BU./HR.



PORTABLE NON/STOP AUTOMATIC BATCH DRYER



- Fully Automatic
- Simple Controls
- Dries Any Crop
- 2 Models - 142 Bu and 284 Bu
- Heavy Duty Construction Throughout
- Metering Rolls Insure Smooth Grain Flow
- Controls Grain Moisture With Automatic Moisture Control

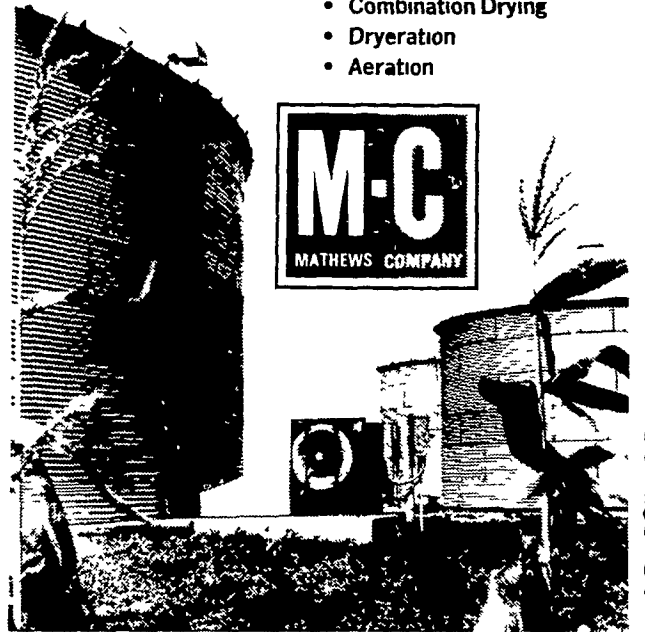
**DRY
3 WAYS**

- 1 Standard—Dry and Cool.
- 2 Dryeration or Combination. Heat Only—Cool In Bin.
- 3 Continuous Batch. Heat Only—Cool In Bin.

CENTRIFUGAL BIN FANS

THE CROWNING TOUCH TO ANY HIGH QUALITY
GRAIN DRYING SYSTEM

- High Temperature Bin Drying
- Low Temperature Bin Drying
- Combination Drying
- Dryeration
- Aeration



SYCAMORE IND. PARK
255 PLANE TREE DRIVE
LANCASTER, PA. 17603
(717) 399-5007
Route 30 West
at the Centerville Exit

Designers of Quality Systems for Poultry, Swine and Grain Handling.