

FARM EQUIPMENT

New Danuser 3 pt. hitch post hole digger, best offer. 215-827-9352.

For Sale - New E.Z. Trail farm wagons, wagon beds and farm gates. B. John Stoltzfus, Gap, RDI, Lancaster Co.

For any type of farm equipment or lawn & garden, call Bill Wheeler personally, Biggs, Inc., Rising Sun, Md. 301-658-5531, Home, 215-932-4416. Dealer for Yanmar, IHC and other line-trades - terrans, delivery available.

JD 3010 diesel tractor, wide front, new paint, new tires, excellent condition, \$4500. 301-875-2478.

For Sale - New Leader 15 ft. L30 lime spreader body, 30" web, 24" fans, good for chicken manure or damp lime, 717-935-2180.

For Sale - Tall bin for tight spot, 18'x10 ring, 6015 bu. bin \$2000, disassembled at farm, new dealer cost \$2500 FOB Factory, 201-329-2666

For Sale - 2-71 GM Diesel power unit with clutch, good condition \$2400. 717-776-7725.

New Grain bins, 3-24' 7727 bu. bins \$2163, Corlok floor \$574, New 30' bin, Sturway twin down auger, \$1000. 201-329-2666.

For Sale - 1066 Int. cab, air, WF, dual remote valves; 686 Int. PA, WF, dual valves, 2 post canopy, new; 966 diesel, WF, single valve, new 18.4x38 tires, 717-786-2534.

FARM EQUIPMENT

* TRACTOR PARTS *
Up to 75% Savings
ALL MAKES *
ALL MODELS

Crawler and Wheel Types NEW - USED - REBUILT PARTS SEND \$1.00 FOR SENSATIONAL NEW 1980 DISCOUNT CATALOG Surplus Tractor Parts Corp. P.O. BOX 2125, Fargo, ND 58107

Wanted - 30-50' set of scales, prefer portable type, must be in good shape, 717-724-3012 bus. 724-1045 res.

For Sale - 6-row Int. cyclo corn planter, cou-till, Midwest harrow, fertilizer auger attachments. Ph 215-347-1792.

For Sale - 1977 White 8800 combine, diesel with air, 704W & 706N corn head, 13' flexible cutter bar grain head, only 1300 hrs. 301-756-2034 between 6 & 10 P.M.

For Sale - Dynahoe backhoe, diesel engine, \$5000. JD 440 loader, \$3300. 717-944-9029, Russ Berg.

For Sale - Int. cub plow, cultivator, sickle bar mower, 5 ft. cut, harrow, starter & Lights, new battery, hydraulic system, excellent condition, Call Robert Kervin, Sr., Rd 3, Bethlehem, PA 18015. 215-868-6803 Price \$3500.

For Sale - Gandy insecticide applicators. Gideon F. Stoltzfus, Gap RD2, Lancaster Co. 2 mi. N. of Gap along Rt. 897, Box 2276.

FARM EQUIPMENT

For Sale - D-4 Dozer with blade, hydraulic draw bar, subsoiler teeth, 10' Rome disc, \$4000 for complete unit. Call 717-362-9126.

For Sale - Custom Built double chain, wooden conveyors & tapered board feeders for cattle and hog feeding systems. M. Rissler, Stevens RD 1, Pa. 215-267-2244.

For Sale - JD 60 complete engine, hyd. & PTO, rebuilt 18 mo. ago, new paint, like new condition, PS, 3 pt. hitch & live PTO, \$2600, Bucks Co. 215-346-7340.

Buy & sell old type of horse drawn equipment. 215-593-5754.

AC HD-3 bulldozer, 6 way hydraulic angle blade, \$6000.

GALION 503 road grader, diesel engine, cab, side shift, moldboard, \$6500. VILSMEIER EQUIPMENT INC. Rt. 309 Montgomeryville, PA 18936 Phone: 215-699-3533

Owatonna Stacker & Mover 11' Case Field Cult. (new) NI 710 Combine NI 702 Power Unit ROY H. BUCH INC. EPHRATA 717-859-2441

LUCKNOW SNOW-BLOWERS for tractors from 35-150 hp., models S6, S7, D7, D85, cutting width from 72" - 102", priced at dealers cost \$975 - \$1950, delivery available.

LOWER IMPLEMENT SALES 412-538-5995 Evans City, PA

FARM EQUIPMENT

Crawler Tractor Parts. Used Caterpillar parts for 955 H, K, L; 977 H, K, L, & other models, large quantity available.

Used & New Parts available for Cat. A.C., IHC & other crawler tractors. VILSMEIER EQUIPMENT INC. Route 309 Montgomeryville, Pa., 18936 Phone: 215-699-3533

For Sale - Farmall Super H, new tires, engine completely rebuilt, good paint, excellent condition, Bucks Co. 215-346-7340.

HOG SLATS Self-spacing concrete from 4 ft. to 12 ft. lengths. V.T. Petersheim, Box 315, R2, Mifflintown, Pa. 17059.

For Sale - Plywood feed bins, will deliver and install, Stoltzfus Woodwork, RD 2, Gap, PA. 1 mile north of Gap along 897. 717-442-8972.

For Sale - NH 1495 12' self-propelled haybine w/cab, like new. 3250 gal. Calumet liquid manure spreader & pump. 4 wheel mounted Lily hay rake, like new. Stump Acres 717-792-3216 York Co.

For Sale - Chisholm-Ryder snapbean harvesters with hydraulic dump wagons, reconditioned & painted 609-769-3183.

For Sale - 2 bottom Oliver 12" & 14" radex plow, JD KBA 24 disc, NH 36 & 24 ft. elevators, NH Super 68 baler, good for corn fodder, 1 Brillion 10' packer seeder w/transport wheels, 1 Brillion 8' packer seeder. 717-687-6553.

FARM EQUIPMENT

For Sale - International #480 folding wing disc. 18"7", 22" heavy duty blades, with mulcher. Used on less than 100 acres, bought larger disc. Jefferson Co. (814) 856-2891 evenings.

For Sale - Harvester Equipment, (1) 144 ft. long belt feeder, (1) 12' auger, (1) Elevator 30-35', (1) Elevator 25' Call 215-348-9694.

For Sale - JD 301 pull type fertilizer spreader, excellent condition 814-443-2193.

Wanted - Good used 100' TV tower & guy wire. Leon Knepper, Berlin, Pa 814-267-4953.

For Sale - 2-row Iron Age transplanter with fertilizer attachments & water tanks, good condition. Call evenings 215-766-0479 Bucks Co.

For Sale - 1978 White 543 4-row no till corn planter, plate type, 38" rows, dry fertilizer, insecticide boxes. York Co. 717-456-5245.

For Sale - NI 206 spreader; NH 202 spreader; Int. 700 5 btm. 16" auto reset plow; NH 258 rota bar rake w/dolly wheels, like new. NI 2 wheel fertilizer cart Wanted - AC G cultivator. PH: 717-786-3087.

For Sale - JD 3020 diesel with narrow front, good condition, low hrs., one owner. NI manure spreader bought new, used 6 mos. 814-766-3536.

For Sale - Case 770 diesel, power shift with weights, new rubber. Also 4 bottom 16" auto. reset Case plow. 717-384-4110.

FARM EQUIPMENT

For Sale - 268 Ft. Badger barn cleaner chain with paddles. 301-692-6880 or 301-692-9476.

For Sale - Case 1370 D cab-air-heater, 675 hrs., like new; Case 1070 D 550 hrs since motor was worked on, JD 3020 D WF, power shift, 3100 hrs., clean; IH 990 9' pull-type windrower, late Model. Will deliver. Oaks Farms 301-582-1927.

For Sale - International 560 tractor with TFE & WFE, fast hitch, also 3 point hitch 301-692-6880 or 301-692-9476.

For Sale - Late model JD 1240 Plateless planter, 4 row w/insecticide & dry fertilizer, excellent condition, \$2750. Juniata Co. 717-463-2666.

For Sale - Allis Chalmers 170 Gas 650 hours, plow, mower, weights, ram, \$9400 Wheel Horse, automatic, 12 horse Kohler mower, cultivator, plow, cart, ramp, roller, snowblower, blade, cab, \$2000. Meyers Snow Blade, \$200. 215-723-7158.

JD 950 tractor with front end loader, power steering, almost new, used 40 hrs., \$8000. JD 509 mower, \$600. JD no till corn planter with 2-71 flex units, heavy duty frame, subsoilers, will accommodate total of 4 units, \$1500. Bell saw with 48" inserted tooth blade, real good condition, \$1000. 301-378-4541 or 301-658-4381 farm number.

For Sale - Combine, Case 1660, 52" cylinder with 2 heads, 14' grain head with hydraulic reel adjust, 4 row corn head. 301-876-2463.

LANCASTER SILO CO., INC.

VAN DALE & STARLINE
SILO UNLOADERS
SALES & SERVICE

2008 Horseshoe Road - 2436 Creek Hill Road
LANCASTER, PA 17601

"LANCASTER" CONVEYORS
TAPER BOARD FEEDERS
BELT FEEDERS

VISIT OUR SALES & PARTS DEPT.
AT OUR HORSESHOE ROAD OFFICE.
WE FEATURE A NEW SELF-SERVICE
PARTS DEPT. MANY ITEMS LISTED
BELOW IN OUR DISPLAY AREA.

MIXING & WEIGHING UNITS
Supreme Batch Mixer Units
75 & 95 Cu. Ft. Units
With Scales & 5 H.P. Motor
Automatic Dump Scale Units
3 Sizes Available

FEED PROCESSING EQUIPMENT
Automatic Roller Mills
#200 Mill w/3 H.P. Motor
#400 Mill w/5 H.P. Motor
Automatic Protein Meters

SILO FILLING EQUIPMENT
Supreme 56" Blowers w/P T O
9" Galvanized Fill Pipe
Multi-Flo Silage Spreaders

CATTLE & HOG WATERERS
Ritchie Cattle Waterers
Ritchie Hog Waterers
Starline Water Bowls

DAIRY BARN EQUIPMENT
Cow Stalls & Stanchions
Cow Trainers & Cow Mats
Galvanized Barn Windows
Ventilation Fans
Barn Cleaners

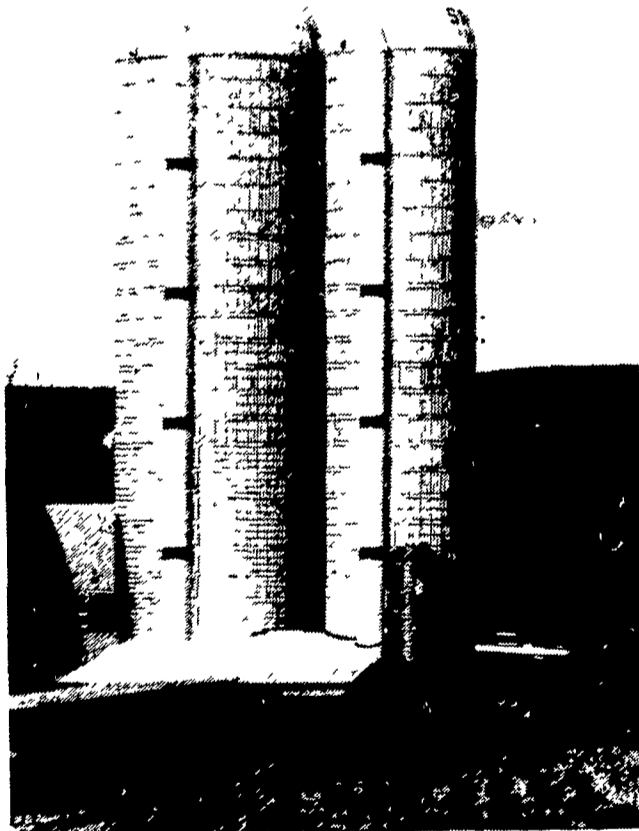
ELECTRIC MOTORS
Baldor & G E. Motors in Stock
1/2 H.P. Thru 10 H.P.

CHOP 'N BED-BEDDING CHOPPER
With Electric-Gas-or Battery Power

KLEEN CHUTE KITS
Silo Chutes Stay Clean - Always

ROUND HAY FEEDERS - 18 Hole
Ideal For Regular Or Large Bales

SILAGE & FEED CARTS
Push or Power Carts



MANUFACTURER & BUILDER OF QUALITY
WET-CAST CONCRETE STAVE FARM SILOS

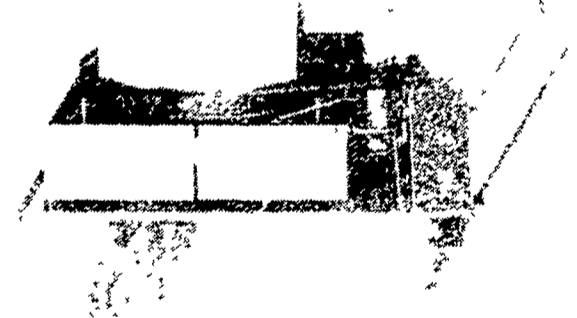
CORRUGATED 3" WET-CAST STAVES
HI-STRENGTH 9/16" DICHROMATE RODS
ALUMINIZED STEEL ROOF & DORMERS
STAVE OR ALUMINIZED STEEL CHUTE
SMOOTH, HEAVY COAT INTERIOR PLASTER

ASK US FOR INFORMATION
CASH DISCOUNTS
EARLY DELIVERY SAVINGS
A.S.C.S. PROGRAM w/10.5% INTEREST

SILO UNLOADERS:
STARLINE #70 - 12' - 14' - 16'
VAN DALE MAGNUM 16' - 18' - 20' - 24'
COMPLETE SERVICE & PARTS

**MARCH - SPECIAL
10% CASH DISCOUNT
CHOP'N BED™**

SPECIFICATIONS:
-Length 56' (140 cum)
-Width 29" (72 cm)
-Height 56' (140 cum)
-Capacity 40 bales/hour



AVAILABLE
w/ELECTRIC
OR GAS
ENGINE

CALL FOR
COMPLETE
DETAILS

REBUILT & USED EQUIPMENT:
Rebuilt Starline Unloaders
12'-14'-16'-18' \$SAVE
2 - Used Jamesway Unloaders
New & Rebuilt Motors - All Sizes
1 - Rebuilt Cummings Diesel Power Unit -
Overhauled \$5000 00

***** SPECIAL *****
1 - USED RIBSTONE SILO 20x50
Silo will be sold complete as it stands at the farm.
Call For Details

FOR COMPLETE INFORMATION, CALL:
Larry Hiestand - Office - 717 - 299-3721
Wayne Lloyd - Sales - 717 - 299-3722