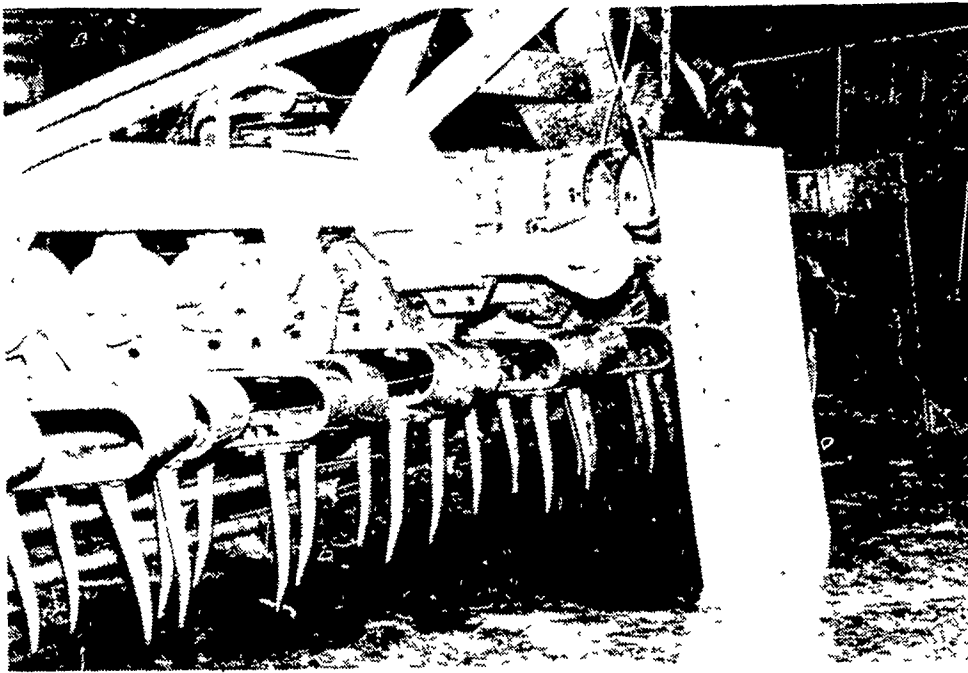
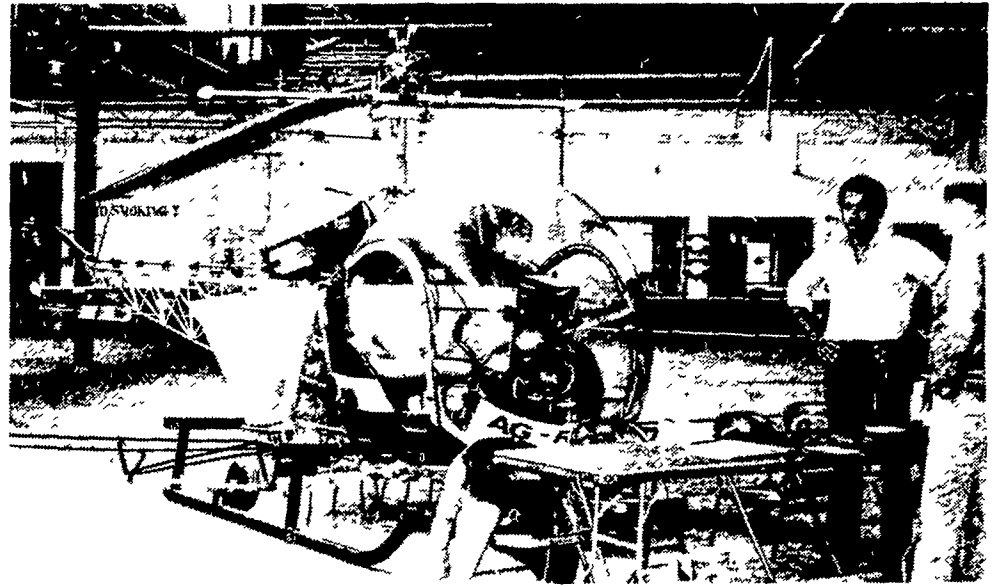


Glimpses at Expo '80



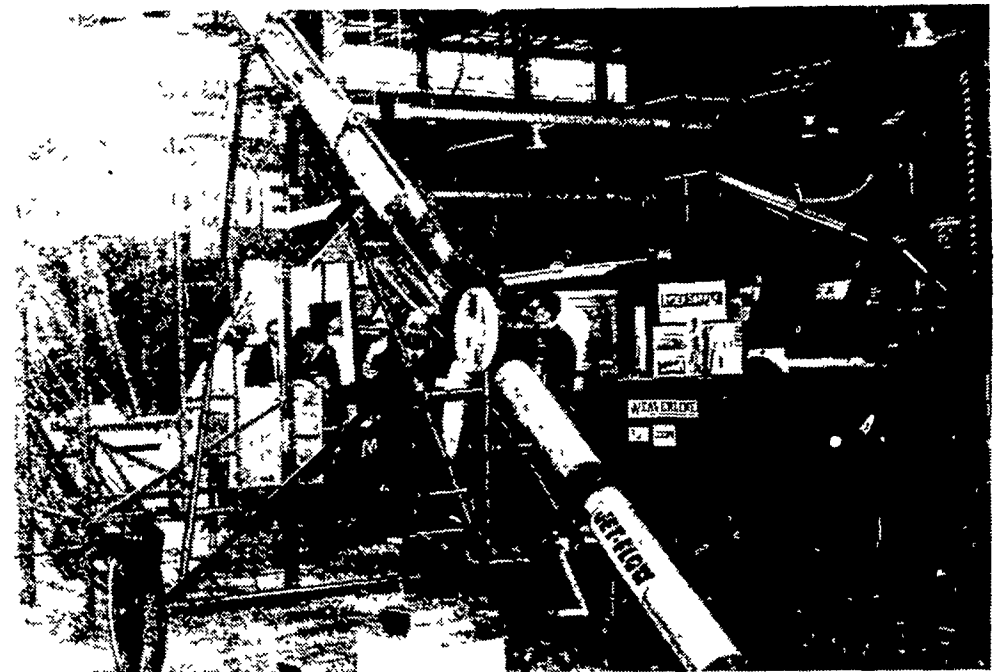
The Farm Equipment Exposition had roughly 170 commercial exhibitors, displaying their newest conservation ideas.



A helicopter maneuvered its way into the Farm Equipment Expo, held at the Farm Show Complex last Thursday through Saturday.



The new PDA logo and the country store displaying Pennsylvania products was a main attraction for many Expo visitors.



Although the major manufacturers were missing, the retailers took the opportunity to "sell" their products to interested farmers.



A few "non-farm" related exhibitors managed to squeeze in to the Expo, offering visitors personal portrait tee shirts, along with other wares.



Paul Hoch, Shippensburg, had the second place pull in the 9000 pound class tractor finals with a pull of 140 feet 9 inches.



Noah Wenger, Lancaster County's representative, was the guest speaker at the Expo's kick-off luncheon. Pictured from left are William T. Lawhon, Bio-Mass; Noah Wenger; Stan Saellem, Farm Show administrative officer; and Secretary Penrose Hallowell.



Chet Heim, assistant PDA secretary, visits with the Expo chicken, whose real identity is still a mystery.