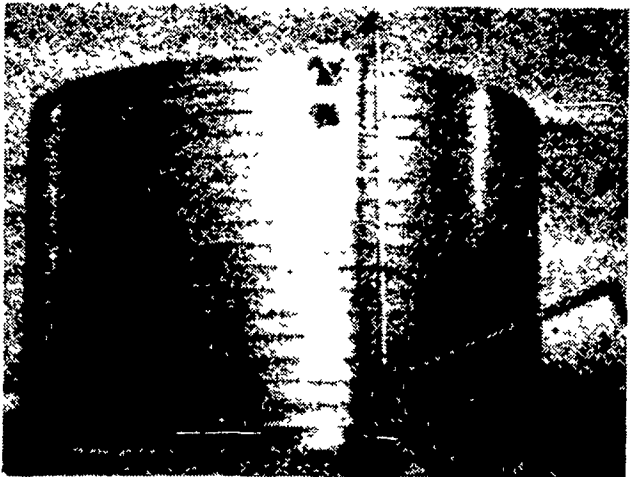


Alfred Nobel, the Swedish inventor of dynamite, left his vast fortune to promote world peace and advance knowledge through the Nobel prizes

Lipp.



For Liquid Manure Storage.

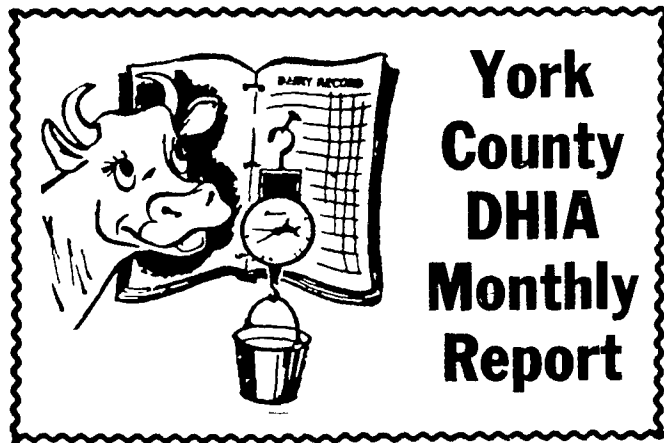
Unique construction methods mean Lipp builds unique manure tanks—in fact, the strongest tank on the market today

We roll our tanks upward on location from coils of steel and seal the coil edges with a unique double-fold lock seam. The result is a boltless, smooth inner wall tank in 12 to 90 foot diameters and up to 900,000 gallon capacities. Interiors can be epoxy or Black-Klad with aluminized or galvanized exteriors. And construction is quick.

We're Lipp. We're different and we're better. Storage is our specialty. Call or write today and get more details on the strongest manure tank available.

Lipp

CHESTER STOLTZFUS
Sales Representative
Route 2 Watson, PA 17777
717-649-5321



January 1980

YORK — A record of 1306 pounds butterfat and 26,024 pounds milk was produced in 305 days by Orchid an eight year old Holstein owned by David Stewart, R2 Delta

Second high was Cindy a nine year old Holstein who produced 932 pounds butterfat and 23,576 pounds milk in 305 days, also owned by Stewart

High herd was Smysers, R1 York with 71 Holstein cows producing 50.6 pounds milk and 2.01 pounds butterfat. Second high was Gum Tree, R1 Delta with 40 Holstein cows producing 54.1 pounds milk and 2.00 pounds butterfat

OWNER	BREED	NO COWS	% DAYS IN MILK	LBS MILK	% FAT	LBS FAT						
Smysers Richlawn Fm	3	71	3	80	9	50	6	4	0	2	0	1
Gum Tree Farm	3	39	7	95	7	54	1	3	7	2	0	0
Leonard W Greek	8	22	0	87	8	48	9	4	1	2	0	0
Thomas A Boyer	3	35	9	90	8	55	3	3	6	1	9	8
Galawn Farms	B3	67	9	89	3	49	9	3	9	1	9	7
Leland Stanford	00	40	0	98	8	55	0	3	5	1	9	5
Smysers Richlawn Fm	3	73	7	81	8	51	2	3	8	1	9	2
Sinking Springs Fm	3	61	7	84	1	50	0	3	8	1	9	1
Earl Fuhrman	B3	68	0	94	1	46	4	1	1	8	8	8
Avalong Farms Inc	3	29	9	75	1	47	2	4	0	1	8	8
Gum Tree Farm	3	39	7	95	8	49	9	3	7	1	8	6
David Stewart	3	56	4	91	8	47	0	3	9	1	8	5
Lynn Wolf	B3	45	3	85	7	54	3	3	4	1	8	5
Galawn Farms	B3	69	6	86	4	46	3	4	0	1	8	3
Carl Anderson	B3	40	8	97	7	51	9	3	5	1	8	2
Elvin G Molison	B3	91	2	88	9	52	1	3	5	1	8	2
H E Fetrow & Sons	3	78	1	86	1	47	5	3	8	1	8	1
Dennis J Myers	3	50	4	92	3	47	7	3	8	1	8	0
Paul R King	3	48	4	85	3	45	3	4	0	1	8	0
Paul R King	3	47	6	82	5	44	7	4	0	1	8	0
William Ruppert	B3	56	3	89	2	49	9	3	6	1	8	0
Wayne B Mummert	B3	70	7	86	9	47	6	3	7	1	7	5
Fantom & Gordon	B3	57	3	98	2	40	3	4	3	1	7	3
Guy A Leader & Sons	2	81	7	89	1	34	6	5	0	1	7	2
Rick L Cook	B3	80	8	93	0	44	4	3	9	1	7	2
B Robert Charles	B3	46	5	87	5	49	8	3	5	1	7	2
Beshore Farms	3	45	1	74	4	44	4	3	9	1	7	1
R R & M R Stewart	3	47	5	81	5	42	1	4	0	1	6	9
Leroy Hertzler	B3	29	2	88	3	43	2	3	9	1	6	8
Melvin R Lehr	B3	37	2	82	0	43	0	3	9	1	6	7
Kenneth L Rexroth	B3	101	1	86	0	44	3	3	7	1	6	6
Mc Ral Dairy Farm	B3	112	4	89	2	43	6	3	8	1	6	4
Rodman C Thompson	3	57	7	82	8	43	9	3	7	1	6	3

Honeycrest FM	B2	95	4	89	3	36	0	4	5	1	6	2
T Edwin Johnson	3	54	7	82	4	41	2	3	9	1	6	0
Hidden Springs Fm	B3	72	8	79	2	40	6	3	9	1	6	0
Titus & Merle Walker	G3	38	0	93	0	40	8	3	9	1	6	0
Stump Acres	3	73	0	92	8	40	4	3	9	1	5	8
Adrian Rinehart	B3	94	6	88	8	41	9	3	8	1	5	8
Eisenhart Bros	B8	56	2	87	6	40	0	4	0	1	5	8
Rodman C Thompson	3	58	1	78	1	41	8	3	7	1	5	5
P McWilliams Jr	B3	37	6	84	6	40	8	3	8	1	5	5
Avalong Farms Inc	2	45	3	79	5	33	1	4	7	1	5	5
Albert Dehoff	B3	131	9	90	3	41	8	3	7	1	5	3
Titus & Merle Walker	G3	38	0	90	0	37	1	4	1	1	5	3
D L & Chris Druck	B3	82	5	82	1	38	7	4	0	1	5	3
Guy A Leader & Sons	2	81	1	81	5	31	5	4	8	1	5	2
Roy & Frank Feeser	3	105	2	80	3	38	9	3	9	1	5	2
Leroy Bupp	3	64	6	86	3	40	9	3	7	1	5	2
Melvin R Lehr	B3	37	0	79	2	40	5	3	8	1	5	2
Kevin Holtzinger	B3	141	4	85	9	41	3	3	6	1	5	0
C Robert Kilgore	B3	42	7	78	4	40	0	3	7	1	4	8
John D Adams	B3	64	8	91	9	38	2	3	9	1	4	8
Geo Knight	3	116	0	80	6	39	0	3	8	1	4	7
Fawn Valley Farm	B3	70	9	84	9	37	5	3	9	1	4	7
Claude M Cooper	B3	37	4	76	6	40	0	3	7	1	4	7
Dennis J Myers	3	51	0	77	2	38	2	3	8	1	4	6
Phillip D Laughman	3	20	6	88	4	41	0	3	6	1	4	6
Big T Holsteins	B3	27	8	91	2	38	6	3	8	1	4	5
Harold Brown	3	63	9	82	8	38	3	3	7	1	4	3
Edwin L Calhoun	B3	44	6	85	7	37	6	3	8	1	4	3
Robert W Mays	B3	69	7	84	0	41	0	3	5	1	4	2
Rutter Bros	2	77	8	81	3	27	7	5	1	1	4	1
Mervin W Hertzler	2	69	8	89	9	32	5	4	3	1	4	1
Vincent C Webb	B3	66	9	89	9	35	9	3	9	1	3	9
Dale L Barshinger	B3	32	6	77	7	37	2	3	7	1	3	9
Curtis V Thompson	B3	65	7	84	4	37	9	3	6	1	3	8
Leonard W Greek	8	22	7	69	0	37	1	3	7	1	3	8
Gary W Thoman	3	39	5	90	1	37	8	3	7	1	3	8
John C Krone	B8	36	1	86	8	34	4	4	0	1	3	8
Dale & Darla Doll	B3	68	9	91	8	40	0	3	4	1	3	7
Wayne L Swetzer	B3	58	6	82	2	37	2	3	7	1	3	7
Albert Nevfeld	B3	154	5	89	1	39	9	3	4	1	3	7
Ellis Crowl	B8	99	2	86	2	35	0	3	9	1	3	6
J H & M B Hushon	B3	84	1	90	6	35	5	3	8	1	3	5
D L McWilliams	B3	63	5	81	7	36	3	3	7	1	3	5
Philip R Stambaugh	B3	49	6	86	3	34	8	3	8	1	3	3
Bupplynn Farms	B3	73	9	85	8	36	3	3	7	1	3	3
R Baumgardner Jr	G3	56	2	80	4	36	0	3	7	1	3	3
D & R Burchett	G3	121	3	89	9	32	2	4	1	1	3	1
Charles Herr & Son	B3	48	9	80	7	33	7	3	9	1	3	1
J Donnel Taylor	B3	81	8	89	2	36	1	3	6	1	3	1
Donald Wilson	B3	35	6	73	7	32	8	4	0	1	3	0
Richard E Stough	B3	35	8	79	7	35	0	3	7	1	3	0
Doll Zirkle	B3	32	0	87	3	43	1	3	7	1	6	1
Charles A Emig	G3	53	3	89	6	40	0	4	0	1	5	9
Orn-Cos Pndrma Dy	B3	66	1	84	4	38	4	4	1	1	5	6
Christ L Petersheim	B3	40	2	82	3	36	4	3	8	1	3	8

OWNER NAME OR NUMBER	BREED	AGE	DAYS IN MILK	LBS. MILK	% FAT	LBS. FAT
Geo Knight						
Mac 85	3	5-4	305	17,915	3.8	684
Matt	3	7-7	222	11,356	4.7	537
Bessie	3	6-3	305	16,302	4.5	729

(Turn to Page D10)

Good Earth Days

Minimum Tillage at Work!

The world's most advanced minimum tillage technology will be on display near you soon. Plan to come and see first hand how you can achieve tremendous energy savings while growing a better product.

See this equipment in action!

NIEMEYER POWER HARROW

The Niemyer Power Harrow has been called the finest minimum tillage tool available today. At Good Earth Days you will learn how to save up to \$12.00 per acre in reduced operating costs with the Niemyer Power Harrow!

John Shearer Disc Plow

Guaranteed penetration for one trip primary tillage. Now you can plow and disc in one trip. Controls allow for infinite adjustments without leaving your seat.

SUNFLOWER

A wide range of excellent tillage equipment including Disc Harrows and Chisel Plows in all sizes and arrangements.

Yetter Rotary Hoes

High speed cultivation saves energy! The Yetter Rotary Hoe releases caking, reactivates chemicals in div soil, weeds and cultivates crops up to 8" high all at 12 mph.

Watch For Announcements About The Good Earth Days Nearest You

Plan to attend the Good Earth Days nearest you.

Allison Shearer here and at Good Earth Days are market and franchise exclusive for Cummings and Bricker, Inc., Batavia, NY.