

## Conservation plant program to be studied

HARRISBURG — "The National Plant Materials Centers Program of the United States Department of Agriculture's Soil Conservation Service may undergo some changes in the future," said Graham Munkittrick, state conservationist. "However, first we need to know what the public needs and wants and their suggestions for making the program responsive to these needs."

Munkittrick said SCS, in

cooperation with other Federal and State agencies and through other arrangements, presently operates and maintains twenty-two Plant Materials Centers in the United States.

Each center develops new plants for conservation purposes in the geographic area it serves. These plants are released jointly, with the States' Agricultural Experiment Stations and other State and Federal agencies,

to commercial growers for production.

The PMC serving Pennsylvania is located near Big Flats, New York. Plants that have been released from the Big Flats PMC in the past include Tioga deertongue grass, Cardinal autumn olive, and Streamco willow

Tioga deertongue grass is used for revegetating acid mine spoil, Cardinal autumn olive is used for wildlife food and cover, and Streamco

willow is used for stream-bank stabilization.

The range of alternatives being studied for conducting a National Plant Materials Program vary from the continuation of the program as it is to transferring complete operations and management of the centers over to non-Federal entities.

Munkittrick said, "We need to know what the public needs and wants so we can explore methods of meeting national conservation plant materials needs."

Additional information concerning the Plant Materials Program may be obtained at the SCS State Office, Room 820, Federal Building, Harrisburg, Pennsylvania 17108, or by telephoning (717) 782-3446.

Munkittrick said that SCS welcomes all inquiries and expressions of views. The public comment period for this phase ends April 4, 1980.



Enjoy with pride the value and the real convenience of **THE MILLER BUILDING**, delivered complete and ready for use . . .

The Miller Building is ready when you are — and can be delivered to your site and erected in just a few hours upon your own foundation. You save both time and money when compared with conventional or even masonry construction.

The uniqueness of The Miller Building is in the exceptionally strong internal construction. Not only does this allow for the added strength of siding materials but it permits maximum use of all interior space — permitting the wide use and easy application of finished wall materials.

Besides the flexibility of modular units — allowing additions or easy relocation — erection is fast and simple with no wait for a contractor.



Transportable Steel Buildings  
All Steel Unitized Construction  
Styrofoam Wall and Roof Insulation  
Attractive Bonded Finishes  
Aluminum Pass Door and Windows  
Complete Building Delivered to Site

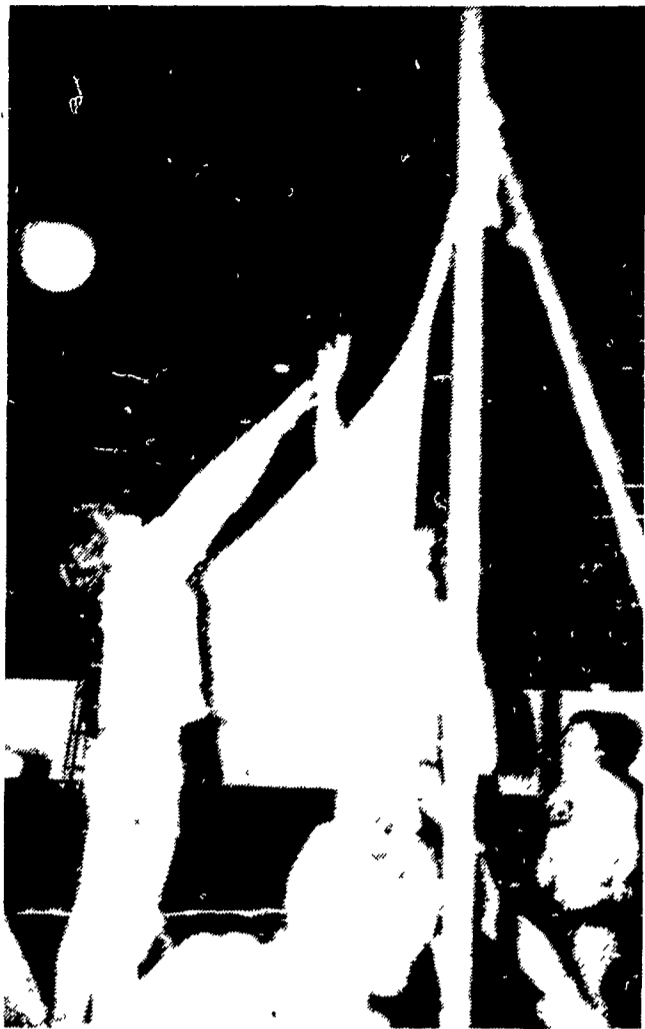
Practical and Versatile Designs  
**TWO-CAR GARAGE  
STORAGE BUILDING  
WAREHOUSE or WORKSHOP**

Uniquely constructed in two or more units, this steel molded building offers maximum strength with a very minimum of bulk. Strong space saving walls will help control temperature changes making the building easier to heat and cooler to use in summer.

For sales and service call  
(717) 866 2319  
(717) 866 5469

**J. MILLER BUILDINGS, Inc.**  
P O BOX 171  
Myerstown R D 3, Pa 17067

The Miller Buildings Pictured TWO CAR GARAGE 24 x 24 x 8  
SHOWROOM 24 x 40 x 10 TEN CAR GARAGE 120 x 36 x 10



Fans cheered during the intense final game between Ephrata and Chambersburg at the Farm Equipment Exposition's first volleyball tourney.

## Volleyball

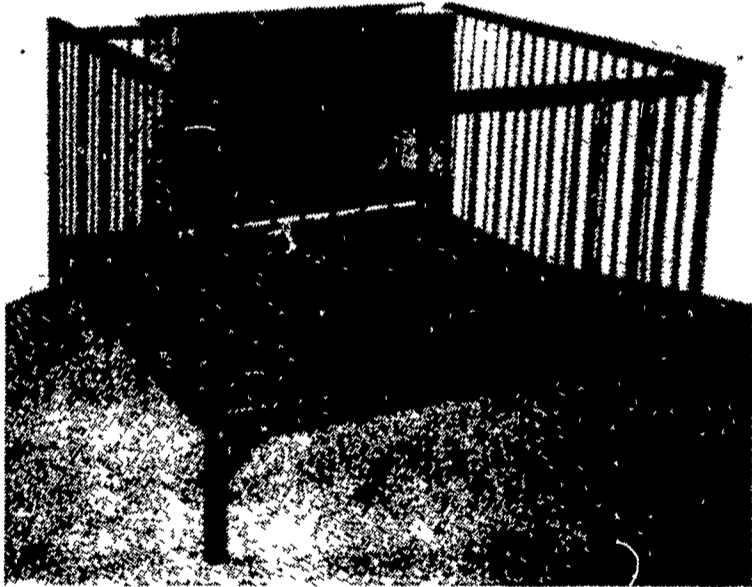
(Continued from Page C26)

Playoff	Final
Chambersburg 15 - Northern Lebanon 5	Ephrata 15 Chambersburg 10

**NEW**

## "Woven Wire Floor" NURSERY PEN

**INCREASE YOUR PROFITS BY USING  
NURSERY PENS DESIGNED BY  
THOMAS FARM SYSTEMS, INC., BY ...**

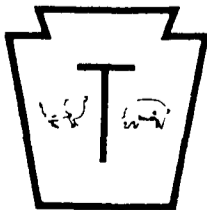


### AVAILABLE MODELS

- ★ 4'x4' Single & Stacked
- ★ 4'x8' Single & Stacked
- ★ Additional Sizes Available
- ★ Dealer Inquiries Available

**OUR PEN DECKS ARE STURDY, EASY TO ASSEMBLE, EASY TO KEEP CLEAN. WOVEN STEEL FLOORING SHEDS MOISTURE & ALLOWS WASTE TO DROP THROUGH EASILY, PROVIDING DRY FOOTING & REDUCING SLIPPAGE INJURY TO YOUNG PIGS.**

## THOMAS FARM SYSTEMS, INC.



2025 Horseshoe Road  
Lancaster, PA 17601  
Phone (717) 299-1706



For more information complete this coupon and return to  
THOMAS FARM SYSTEMS, INC.  
2025 Horseshoe Road, Lancaster, PA 17601

NAME \_\_\_\_\_  
ADDRESS \_\_\_\_\_  
CITY \_\_\_\_\_ STATE \_\_\_\_\_ ZIP \_\_\_\_\_  
PHONE \_\_\_\_\_