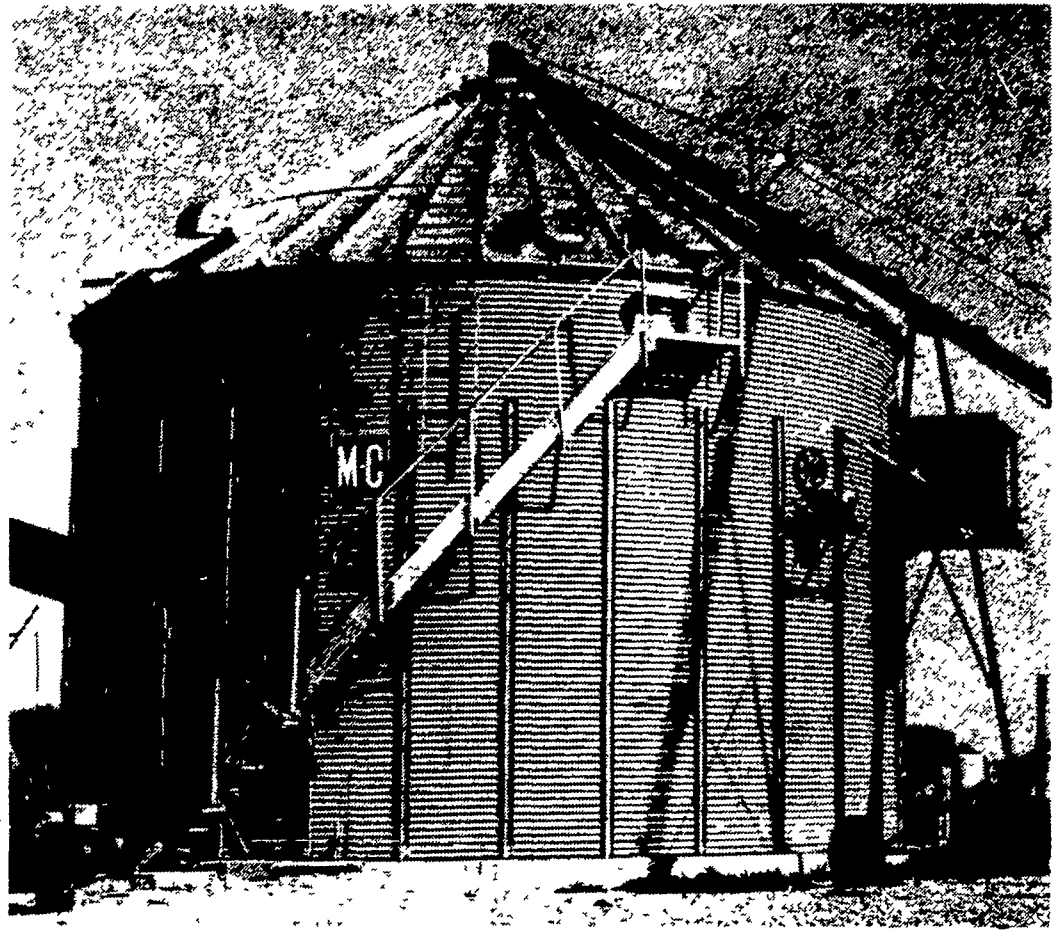


**Now Available!**

**M-C DRYBINE™**  
MATHEWS COMPANY

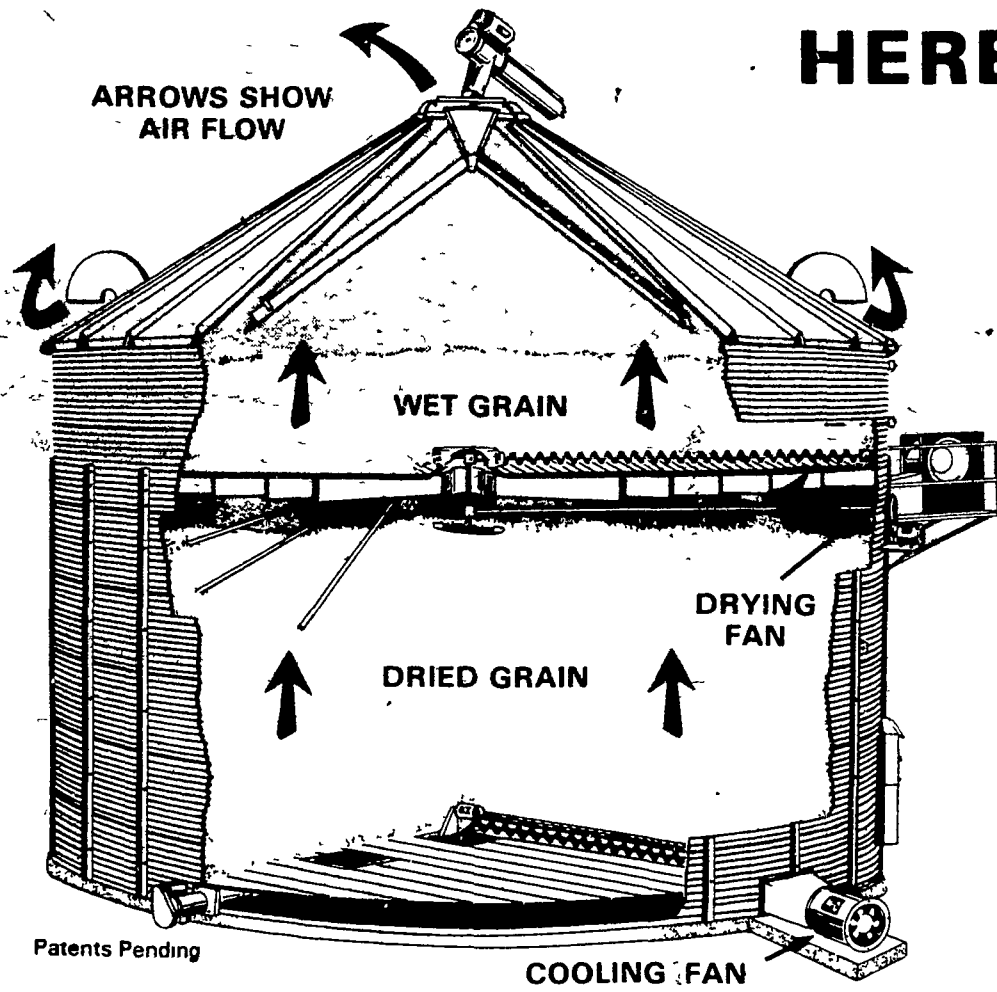
**The ENERGY SAVING  
 IN-BIN DRYING SYSTEM**

The new Mathews Continuous In-Bin Dryer is a combination storage drying and cooling bin designed to save you money. It is efficient, fast, easy to manage and costs less to operate. The drying process is fast, while the cooling process is slow, eliminating stress cracks and damage caused by fast cooling. There is nothing else like it on the market. The Mathews design requires no wet holding bin or separate bin for cooling.



- Saves energy for profitable operations.
- Eliminates the most common problems found in other in-bin dryers.
- Proven high capacity results (357 bushels per hour).
- Low per bushel costs.

**HERE'S HOW IT WORKS...**



As wet grain enters the top of the bin, it flows into the upper drying chamber as harvested, with no need for a wet holding bin. This upper chamber holds up to 4 feet of wet grain (2250 bushels).

Every seven minutes, a continuous flow auger makes a complete revolution around the upper drying floor, drawing the dried grain into the lower cooling area.

Hot air is introduced under the upper floor to dry the wet grain and to heat the surface of the grain that is distributed into the lower cooling chamber. The air that is used for cooling the grain picks up heat during the cooling process. This heated air is then used again in the drying process, saving on fuel costs.

When not being used for drying, the bin will store 8500 bushels of grain.

**BIN DRYER TEST FOR FALL OF 1979**

Ambient Temperature .....	43°
Plenum Temperature .....	190°
Static Pressure .....	1.5
Average Fuel Costs .....	51.9¢/gallon
Gallons LP Gas ('79) .....	1,420
Bushels/gallon .....	10.3
Cost/bushel .....	.05
Bushels Dried ('79) .....	14,629

Moisture (Average Incoming) .....	28.3
Moisture of Dry Corn .....	13.1
Points Removed .....	15.3
Bushels/hour .....	356.8
Total Drying Time .....	40 Hours 57 Minutes
Unload (Tapered)	
Auger Time On .....	23 Hours 35 Minutes



**H**  
**HERSHEY EQUIPMENT  
 COMPANY, INC.**

SYCAMORE IND. PARK  
 255 PLANE TREE DRIVE  
 LANCASTER, PA. 17603  
 (717) 393-5807  
 Route 30 West  
 at the Centerville Exit

**Designers of Quality Systems for Poultry, Swine and Grain Handling.**