

MISCELLANEOUS

For Sale - Firewood splitting operation, runs hydraulically and mechanically, will cut and split logs up to 22" diameter and 35' long, 4 way splitter, 25 cord a day, hardwood. This model now in operation, Heyer Bros., Rd 2 Box 222, Towanda, PA 18848, 717-265-3663, 265-8020.

Potent Stimulant stimulants! Medically approved \$1.00, Genie, Box 4090 LF, Yuma, Arizona 85364.

Wanted - Good strong hitch or spring wagon for a team of large Welsh ponies. PH: 914-258-4230.

For Sale - Hand drill press, heavy duty. Baileys #4. \$50 or best offer. PH: 717-684-8431.

Old Keg from Sprenger Brewery Company, Lancaster, PA. and also other old items at our farm sale March 11.

For Sale - Second hand lumber - for more information 717-665-3154.

For Sale - Misprint cartons, \$15 per 1,000 Call Eddie 717-665-5927.

1973 Champion 21 ft. travel trailer sleeps 6, excellent cond. \$2000. 717-865-4526.

For Sale - Used beams, various sizes, lengths 20-50', excellent for use in buildings, pole barns, garages, creek bridges on farm, etc. 717-768-8222, evs. 687-9053.

For Sale - Horse drawn sleighs & buggies & horse related equipment. 301-398-5696 after 7 P.M. Cecil Co., MD.

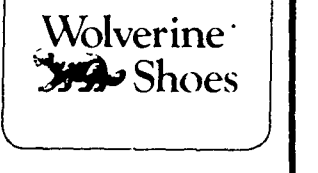
Work Shirts and Pants 6/\$14.00, Coveralls 3/\$21.00, Jackets 2/\$9.00, Leather Gloves 6 pair/\$19.00. Catalog \$1.00. Call 203-574-4090. Sara Glove Co., Box 4069-C 84, Waterbury, Conn. 06704.

FUELMISER
Chimney Heat Reclaimer




HIE STAND DISTRIBUTORS
1830 S. State St.
East Petersburg, PA
Phone: 717-569-7397

Wolverine Shoes



Durability and Comfort
Shoes and Boots for the entire family



LEID SHOES & SADDLERY
Kutztown R1,
Berks Co., Pa.
215-682-7926

MISCELLANEOUS

TOBACCO MUSLIN

- TOBACCO SEEDS
- MOTH BALLS

MICHIGAN PEAT

W. L. ZIMMERMAN & SONS
717-768-8291
Intercourse, Pa.

MISCELLANEOUS

SPRING SALE
10% OFF
Sale Ends
March 22

- Dairy Supplies
- Animal Health Products
- Lawn & Garden Tools
- Forks & Shovels
- Motor Oil & Grease
- Plow Parts
- Work Boots & Rubbers
- Shoes & Gloves
- Fence ware & Posts
- Hardware

BIRD-IN-HAND FARM SUPPLY
200 Maple Ave.
Bird-in-Hand, PA 17505

TRUCK LOAD SALE

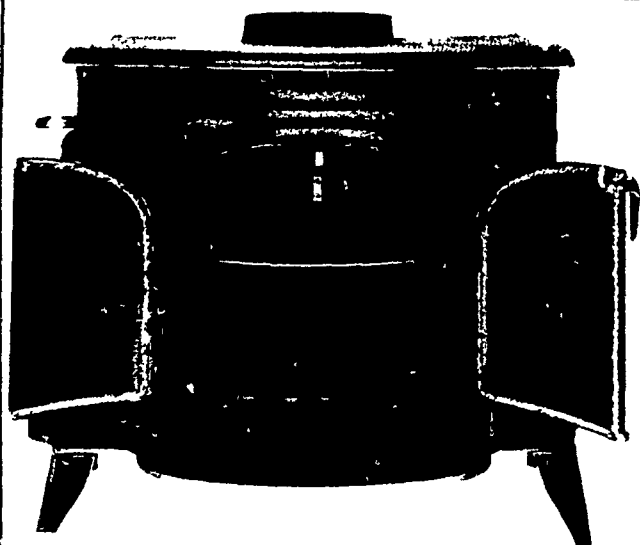
Black Mulch Plastic
4'x2000'x.0015 (1 1/2 mil.)
\$37.00 per roll

JIFFY 7s
Case of 1000 pots
\$36.50 per case

KYS KUBES
Case of 1000 Kubes
\$26.00 per case

Quantity Discounts

RUFUS R. MARTIN
Box 346 RD1, Port Trevorton, PA 17864



APPALACHIAN STOVES

The only wood stove distributor south of New York State, where you can make your choice of a wood stove with a cross reference system, technically designed by "Aeri Institute" which makes it possible to pinpoint the finest matched efficiency ever for your own house, by choosing the proper stove according to the cross reference numbers on the stoves we have on display.

(We must have the measurements and type of insulation in your home!)

Over 400 Stoves & Inserts in stock & more coming.

\$100 Off of 20 Popular Models Cash & Carry

- | | | |
|-----------------|----------|-------------|
| THERMOLATOR | RITWAY | FISHER |
| TIMBERLINE | SUBURBAN | ALASKA |
| DEFIANT/OLYMPIC | BOSS | ASHLEY/KING |
| ALL NIGHTER | FOX FIRE | GLACIER BAY |

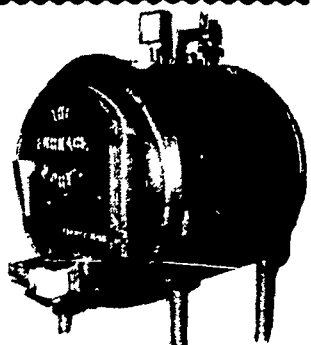
Plus 10 Antique Cook Stoves, Etc.

ATTENTION! HOME OWNERS WITH HOT WATER HEAT

You can eliminate or drastically reduce your heating costs with the SFB-3

WOOD FIRED BOILER

- Utilizes Existing System
- Fully Automatic
- Pays for itself
- Controlled Electrically!
- Remote installations possible



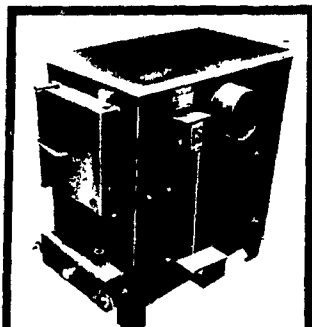
Rt. 94 North, Hanover, Pa., Midway between Hanover & Crosskeys (US 30) Phone no. reserved for customer service
Hours Mon.-Fri. 12:30 to 8 P.M.

MISCELLANEOUS

For Sale - TEC MA-140 digital cash register 717-397-2977.

For Sale - 7 standing Black Walnut trees. PH. 717-653-4479.

HOUSEHOLD GOODS



FOR SALE Riteway

HEATERS

Model 37 in stock now
Wood & Coal
Combination
Thermostat Controlled

10% Off

STOLTZFUS HARNESS SHOP

Honey Brook RD1
Box 13, Pa. 19344
1st farm out of town
along Broad St.

REAL ESTATE

Wanted to rent - Tillable acreage in York, Adams, or Franklin Counties or nearby Maryland areas. Write D. Lott, 25 Fawn Trail, Fairfield, Pa. 17320. 717-642-8060.

Farmette - Tioga Co., PA, large 4 bedroom Southern styled colonial home with 4 1/2 acres, good barn, fenced pasture with spring, privacy, nice setting plus many extras, by owner, 717-549-5882 after 5:30.

Farms, Nottingham, Chester Co., 50 prime tillable acres, 8 room farm house, granary, tool shed, corn crib, barn needs rebuilding. Ph. 215-857-3762 or Neighborhood Realty, Jordan Inc., 3905 E. Lincoln Hwy., Thorndale, Pa. 215-269-8000.

NEW YORK farm for sale, Seneca County. 140 acres, 110 tillable, good soil, no chemicals 5 years. Amish families nearby. 5 miles from Mennonite school. Owner selling directly. No house, poor barn. \$73,500. Ph Michael Isard 315-425-9627 or write 244 Croly St., #16, Syracuse, NY 13224.

63 acres, 38 tillable, 10 acres concord grapes with contract and you pick, good 3-4 bedroom home, Fingerlakes area \$75,000. 315-549-7115.

Farm For Lease - 317 acres, 40 stanchion dairy barn with pipeline, barn cleaner, pens for young cattle, 44 stall loafing barn, 2 silos, unloader and feeder, machinery shed, 8 room house, hookup for mobile home, 814-445-6333 Guy Spoerlein, Rd 5, Somerset, PA 15501.

For Sale by Owner SNYDER COUNTY FARM 108 acres, 80 tillable, 2 story 6 bedroom house, coal HW heat, 1-36x96 block chicken house. 1-36x70 pole chicken house. Barn 35x70 w/silo attached. Numerous out buildings. Many Amish in area. Call 717-539-8247.

For Sale - Juniata Co., PA, 30 acre farm \$75,000 43 acres of mountain ground \$35,000 Cabin on bank of Juniata river with 200' river frontage \$25,000. Reply 703 N. 7th St., Mifflintown, Pa. 17059.

REAL ESTATE

For Sale - Newly remodeled nine room house in St. Law. Co. 11 miles from Ogdensburg, New York. 8 acres of land, two barns, 30x40, 20x30. Excellent condition. 315-344-6536.

FREE

Exciting Seasonal Edition. Catalog! Over 5,400 country properties described, pictured! - Land, Farms, Homes - Waterfront, Recreation, Retirement buys! Yours FREE from the World's Largest!

STROUT REALTY
1801 N. Front St., Dept. 6490
Harrisburg, PA 17102
(717) 234-0138

Dairy Farm For Sale - Huntingdon County, 140 acre farm, cattle & machinery, 32 head Holstein cattle, mostly Registered. Complete line of modern farm machinery. 60 tillable acres, 25 acres pasture with stream running through, remaining wood lot. Lots of handy ground available for rent. Terms available. Selling due to bad health. 814-542-2949.

JUNIATA COUNTY
172 Acre Farm - 150 Tillable 8 Room House - Modern conveniences 45 + 90 Barn plus 32 + 90 loafing Other large buildings Road Frontage Financing available if necessary. Phone 717-535-5530.

Wanted to Rent: FARMLAND for Spring 1980. Top prices paid for tillable acreage anywhere in Berks or Lehigh County. 215-756-6259.

2 Farms consisting of 120 acres of very fertile land, 2 sets of buildings for sale by the owner, John Strawbridge, 301-996-2022.

For Sale - 200-300 cow dairy designed for up to 1000 cows, 2 Harvestore silos, large pit silo, flush system. Located in South Georgia, Florida milk base. PH: 912-776-5266.

Wanted to Rent - Young farmer wishes to rent tillable acreage in Dauphin-Cumberland Counties. Prefer long term lease. Write P.O. Box 12, Dalmatia, Pa. or call 717-758-3252.

For Sale - 3 bedroom, 2 story frame house with 2 heating systems, small 3 story chicken house, 2 car garage on corner lots in Richfield area. 717-694-3502.

For Sale - 11 acre potato farm, 12 miles E. of VW plant in the Laurel Mts. of West'md. Co., PA, house, barn, outbuildings, mineral rights, Write Edward Gavlak, Rd 1, Acme, PA 15610.

Want to Rent - Farm, Lehigh, Berks, Bucks, Northampton Co., Montgomery Co. area. Prefer stream & long term lease. Building conditions not important. Write P.O. Box 366 L-83, c/o Lancaster Farming, Lititz, Pa. 17543.

Complete hog operation, Somerset Co., 75 sows, 150 feeder pigs, 27 acres, 7 yr. old 7 room house, farrowing for 10 sows, new 24x108 nursery to finish building, other buildings, \$150,000. 814-443-4111.

For Rent - Giant Silo For Rent - Giant Silo Giant Silo - Warwick Make Offer 215-286-5884

Southern York Co., 157 acre farm, 105 tillable, home completely remodeled, good barn, pond, excellent farm land, sell on sales agreement. Fox Run Realty 717-845-5834. 845-2648.

REAL ESTATE

Auction of 126 AC farm and timberland in Mifflin County, next to state lands, good dwlg, barn, old log house, spring water, hunting and near Juniata River fishing, with large inventory of used and antique farm equipment, incl sleigh, April 5, 1980. For details write P.O. Box 591, Lewistown, PA 17044, or call (717) 248-4976, 248-5479 or 899-6549 Ref: Miller Ests.

For Sale - Nittany Valley - 106 Acre farm, 40 cow tie stall barn, milk house with 500 gal. tank, 2 silos, corn crib & other sheds, 9 room house with bath. 40 cows & young stock, equipment. Will sell together or separate Owner financing possible. Spring possession. No realtors. Write P.O. Box J122, Lancaster Farming, Lititz, PA 17543.

For Rent - 60 Acre farm, equipped for dairy, 2 miles East of Lancaster on Strasburg Pike. PH: 717-394-8771.

N.Y. STATE, JEFFERSON COUNTY - 430 acres, 250 tillable, 50 acres wood 160 head, 120 stanchions, 75 milkers. Very good buildings, machinery. \$595,000 stocked and equipped. \$395,000 bare Farrell Properties, Cape Vincent, N.Y. 13618 (315) 654-2468.

Building lots near Thompsontown, 2 3/4 acre lots at \$3500 per acre, perked for regular system. 717-535-5814 after 3 p.m. weekdays.

Wanted to Rent - Young farmer would like to rent or lease tillable acreage in Harford or Baltimore Co. & Southern York Co., PA. Call 301-692-6222 after 6 P.M.

Wanted to Buy - Young farmer would like to buy farm, 100 acres or more in Northern Harford & Northeastern Baltimore Co., MD. Dairy, Beef or Hog, stocked or unstocked. Call 301-692-6222 after 6 P.M.

SHENANDOAH VALLEY OF VIRGINIA - 190 acre Grade A dairy, milking 90 cows. Double 3 Herringbone milking parlor, three silos, loading stalls, Nine room house. \$390,000. Owen Thomas, Inc., Realtors, 10 N. Market St., Staunton, Va. 24401. Phone (703) 885-1278.

LEASE QUALITY DAIRY CATTLE

Various plans available.
Call or Write:
Dairy Farm Leasing
1700 Dupont Ave. South
Minneapolis, Minn. 55403
612-377-1489

For Rent: 128 Acre Farm, 4 miles from Hershey. Approximately 70 acres tillable and 40 pasture. House is four bedroom, 2 fireplaces, storm windows and siding. Also, 3 bedroom tenant house, adjacent 3 acres pond, barn and creek. Will consider sale Call 1-717-652-2834.

Wanted - One farm with a milk jugging store. Call after 7 P.M. 215-635-2298.

40 acres, Adams Co., Broiler and Hog Farm Broiler House cap. 14,000 plus auto. equip. New farrow building & implement shed, Nice 2 1/2 story home with summer house, fairly level land. H-2933 \$160,000. Contact Dan Rodgers at Key Real Estate, 108 York St., Hanover, Pa 17331, Phone 717-632-6400.

For Sale - 20 acres, 4 bedroom house, bank barn, farrowing house, 8 miles from Shippensburg, \$85,000, mortgage can be assumed Century 21, Lincoln Assoc, Chambersburg, 717-264-3238, Bill VandeMerwe 717-264-3537.