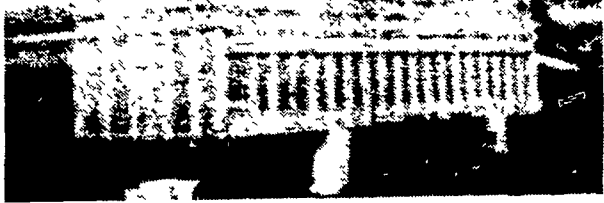


TRUCKS

For Sale - 1965 Ford F600 farm truck, 6 cyl. motor & new tires, 4 spd. trans., 2 spd. rear, ready to go. 717-665-5001.

For Sale - Ford F350 cattle & grain body with hoist, excellent condition, 3200 original miles, bought in 1978. IMMEDIATE SALE NECESSARY. 412-452-7992.

FOR SALE



26 foot grain & livestock bed, all aluminum, made by M.H. Eby.

Call after 4 P.M.
717-626-6904

AGWAY EZ RIDE AIR SUSPENSION



CLS 9500

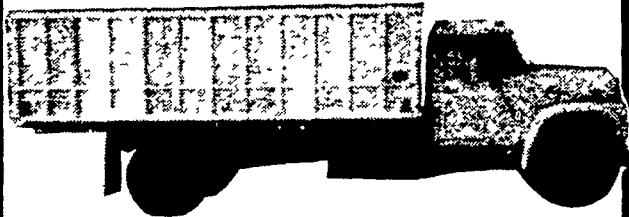
An industry workhorse available as a pusher axle with 15", 20", and 22" wheels. As a tag axle with 20" and 22" wheels.

15" & 20" models \$2725.00 plus installation, tires, rims and applicable tax.

Call or Write

MOTOR TRANSPORTATION SERVICE

1031 Dillerville Rd.
Lancaster, Pa. 17603
717-393-9689
Dealer inquiries invited



New Hewey aluminum grain body, 16' with 48" sides and swing out tail gate.

1974 Louisville V8 gas engine, 10:00x20 tires, air brakes, 5+2 speed rear, 32,000 Gross with new 16' aluminum grain dump, 48" sides, swing out tail gate, 16T embro hoist \$10,750.

1973 IH 1600 Loadstar V8 gas, 900x20 tires, 5 speed, 26,000 gross with new 16' aluminum grain dump, 48" sides, swing out tailgate, 16T embro hoist \$7,750.

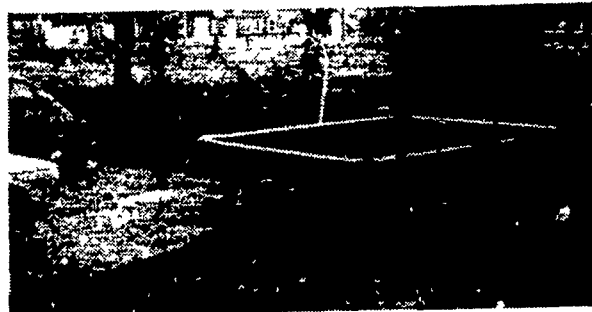
1973 chevy C-60 V8 gas, 900x20 tires, 5 speed, 24,000 gross with new 16' aluminum grain dump, 48" sides, swing out tail gate, 14T hoist \$8,750.

1973 IH 1600 Loadstar V8 gas, 900x20 tires, 5 speed, 26,000 gross with new 16' Midwest grain body, 52" sides, 14T hoist, \$6,950.

WILMER WEAVER

Rd 1 Box 144
Fredericksburg, PA 17026
717-865-6710

TRUCKS



Gehman Built Custom Trailers
1, 2, or 3 axle

Collapseable sales ring on wheels. Foot trimming tilt table on wheels. Dump trailers. Cargo and livestock trailers.

Anything you need wheels for — we will build

HENRY GEHMAN

Woessner Rd., Salfordville, PA
215-287-9746
Montgomery Co.

TRUCKS

2 WHEEL DRIVES...

1978 Dodge 150 Club Cab Pickup	\$5295
1978 Chevy C-20 9-pass. Suburban	\$4995
1978 Ford 150, 6 Cyl., Auto.	\$4695
1978 Chevy Pickup, 6 Cyl., Stick	\$4295
1978 Ford 150 Pickup, 4 Speed.	\$3995
1978 Ford 150 Pickup, 6 Cyl., Stick	\$3995
1977 Ford Super Cab, 6 Cyl.	\$4295
1977 Dodge Pickup, 6 cyl Stick	\$3695
1977 GMC Van, 6 cyl. Stick	\$3495
1977 Chevy Pickup With Cap.	\$4995
1977 Ford 150 Pickup, 4 Speed.	\$3995
1977 Chevy 9 Pass. Suburban, Loaded.	\$5995
1977 Ford 3/4 Ton Pickup	\$5195
1977 Chevy ElCamino, Auto	\$3695
1976 Ford With Slide-In Camper	\$3995
1975 Chevy 3/4 Ton pickup	\$3995
1975 Chevy 1-Ton Dump Truck	\$5595
1975 VW, 7 Pass. Bus	\$2995
1974 Chevy Pickup With Air	\$3495
1974 Int. Pickup with Cap	\$2995
1973 Chevy Pickup, Like New	\$2995
1972 Chevy Walk-in Van	\$1395

4 WHEEL DRIVES...

1979 Bronco, V8, 4 Speed	\$6195
1979 Blazer, 4 Speed, 500 Miles	\$6895
1978 Ford 150 Pickup With Cap	\$6695
1978 Ford 3/4 Ton Pickup, 4 Speed.	\$6595
1977 Chevy 9 Pass. Suburban	\$6195
1977 Cheyenne Blazer, Auto	\$6195
1977 Dodge 3/4 Ton Club Cab With Plow	\$5895
1976 Chevy Pickup, V8, Auto.	\$4495
1976 Blazer, V8, Auto	\$5495
1975 Blazer With Air	\$4995
1975 Blazer With Plow	\$5495
1974 Chevy Pickup, V8, Stick	\$3995
1974 Dodge 3/4 Ton, With Plow	\$3995
1972 Dodge Utility Body, 4 Speed	\$3295
1970 Blazer, V8, Auto	\$2895

SPECIAL 1977 CHEVY STEP VAN

12 Ft Alum. Body, Power Lift Gate, Overhead Door, V8, Auto, PS, PB, Dual Wheels, 30,000 Miles

\$6995

MIKE RHODES & CO.

"THE TRUCK PEOPLE"

Rt. 663 & Swamp Pike, Gilbertsville, Pa.
(215) 327-1380
or toll free 800-362-7655

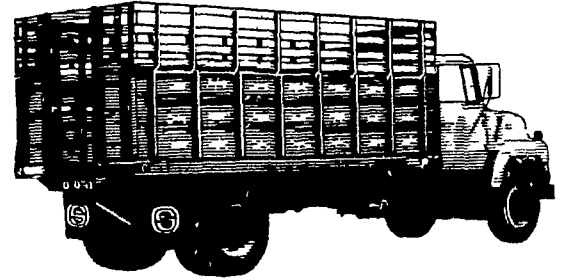
TRUCKS

TRUCKS

For Sale - 1973 White cab/over 270 Cat., Turbo 13 speed, twin screw, paint is good, engine transmission overhauled, good condition \$16,000 215-445-4280 or 215-445-4197.

4300 IH truck-tractor, 3406 360H.P. Cat engine (5000 miles on new engine), 13 spd 185 in. w.13. 22" rubber 30' Morgan Trailer 1977-22" rubber like new. 717-328-2093 or 727-328-5426.

NEW GRAIN TRUCKS



1979 GMC 7000, 33, 200 GVW, 366 V8, 5 sp. 2 sp Rr, 10:00x20 14 ply tires, HD Double frame, deluxe interior, chrome grill and bumper, 50 gal fuel tank, AM radio with Omaha Standard 16' HD Platform, 52 inch steel grain sides, van door end gate, Omaha 52 DA twin cyl. 20 ton hoist, 400 bu. capacity, Red and White.

SPECIAL PACKAGE PRICE \$22,500.00

1980 GMC 7000, 33,200 GVW, 366 V8, 5 sp 2 sp Rr, 10:00x20 14 ply tires, HD Double frame, Deluxe interior, chrome grill and bumper, 50 gal. fuel tank, AM Radio, Delco Moraine Hi-Power brakes, w/Omaha standard 18' HD platform, 40" steel grain sides, 26" cattle fold down racks, Harsh RL-108 Twin cyl. 18 ton hoist, 345 bu. capacity. Green & White.

SPECIAL PACKAGE PRICE \$23,500.00

USED GRAIN TRUCKS

1971 GMC cab/over V6 gas engine, 5 speed, 27,500 GVW w/new Omaha Standard 16' platform, 40" steel grain sides, Harsh RL105 15 ton hoist

SPECIAL PACKAGE PRICE \$7,950.00

1971 IH 1800 Load Star V8 gas engine, 27,500 GVW, 5 speed, 2 speed rear with new Omaha Standard 14' platform; 52" steel grain sides, Omaha 61 DA single cylinder 14 ton hoist

SPECIAL PACKAGE PRICE \$8,950.00

1971 GMC 5500, 24,000 GVW, 350 V8, 5 sp. 825x20 tires, 2 fuel tanks, with new Omaha Standard 16' HD platform, 40" steel grain sides, Harsh RL-100 single cyl 10 ton hoist, 305 bu capacity Green.

SPECIAL PACKAGE PRICE \$9,500.00

1974 INT. 1700 Load Star 27,500 GVW, V8 gas engine, tilt hood, 5 sp 2 sp Rr, 10:00x20 tires, new brakes with New 16' Aluminum grain body, 48" sides, Harsh RL-105 15 ton hoist Blue.

SPECIAL PACKAGE PRICE \$12,950.00

The above used trucks have been reconditioned by us and are in good to excellent condition

1966 Int. 1890 Loadstar, 25,500 GVW, V8, Gas, w/14' grain dump \$4,950
Int. 1890 Loadstar, tandem axle, 5 & 3 trans w/16' Grain Dump \$6,950

Coming Soon...
Used 1973 Ford c/o, 26,000 GVW w/new 16' Omaha standard Grain Dump.
Used 1970 Int. 2110, 32,000 GVW, Air Brakes, 5 & 2 Transp w/new 18' Grain Dump
Used Int 1610 Cargo Star c/o w/20' Grain Dump

Midwest 14 1/2' Grain Body Treadplate steel floor w/40" steel sides, 12" tip top extension and steel cattle folddown racks in like new condition

FARMERSVILLE EQUIPMENT INC.

RD 4, EPHRATA, PA 717-354-4271
Hours: Mon., Tues., Wed., Fri. - 7:30 to 5:30
Thurs. till 9:00, Saturday till 3:00