

Public Sales Register

Closing Date - Monday, 5:00 P.M.
of each week's publication

SAT MAR 29 - 12:00 P.M. Public Sale of valuable real estate and farm equipment Located 4 miles NE of Littlestown, PA or 5 miles SE of Gettysburg, PA Richard Gladfelter Owner Dennis J Plunkert Auctioneer

SAT MAR 29 - 10:00 A.M. Public Sale of Real Estate and Household Goods Located in Millway, Warwick Twp., Lancaster Co., PA on the corner of Meadow Valley and Briar Hill Rd., about 1/2 mile north of Rothsville Rd between Ephrata and Rothsville Terms by John Gehman, Chet Long and Joe Metzler Auctioneers

SAT MAR 29 - 9:00 A.M. Hummel's Annual Farm Machinery Sale To be held at Hummel's Auction Barn, 1/2 mile west of New Berlin, Union Co Earl Eash Auctioneer

MARCH 31 - 9:30 A.M. Consignment Sale Located at S Race St., Myerstown, Pa 17067 Sale held by Wengers Farm Machinery, Inc

MON MAR 31 - 3:00 P.M. Easter Lamb Sale G & M Livestock Market, Inc Duncansville, PA. For information Sherman Glick 717-248-0960, Fred McCartney 717-349-2393, Wayne Fredericks 814-793-3370

APRIL

TUES APR 1 - 2:00 P.M. Public Sale of 90 Acre Hog & Steer Farm Located in Jefferson Twp., Berks Co., Rt 183N to Bernville, turn right onto Shartlesville Rd., 1/4 mile to Manbeck Rd., turn left to farm on right Sale by Barry & Dorothy Shupe Kline & Kreider Auction Service

TUES APR 1 - 9:30 A.M.

Cohocton, NY Sale #6 of PIR-RUNG's All Day Auction of Farmer Owned Machinery A big established sale with every kind of farm implement represented! Sale along Rte 371 midway between Cohocton and North Cohocton, NY Sale by PIR-RUNG AUCTIONEERS, INC., Wayland, NY 716-728-2520

WED APRIL 2 - 9 A.M. Consignment Sale by David H Good located 1/2 mile North of Route 23 on North Maple Ave in Leola, Lancaster Co., Pa Watch for sale signs F Snyder, R Martin, C Wolgemuth, J Fry and L Horst, Auctioneer

THURS APRIL 3 - Monthly Cow Sale at the Melvin Kolb, Inc Sales Barn, 2220 Dairy Road, Lancaster, Pa 17601 Dennis Kolb, Sales Manager, Robert Mullendore, Auctioneer

FRI. APR 4 - 10:30 A.M. Public Sale of Tractors Located 3/4 miles west of New Bloomfield, PA, Perry Co R E Copenhaver & Son

SAT APR 5 - Wakefield Lions Club Public Sale at Powls Feed Mill near Wakefield, PA Kreider & Petersheim Auctioneers

SAT APR 5 - 9:30 A.M. Inventory Reduction Sale of Farm Tractors, Machinery, Industrial Tractors and Machinery Marshall Machinery Inc., Rd 4 Rt 652, 5 miles east of Honesdale, PA 717-729 7117

SAT APRIL 5 - Millerstown, Pa Full line of Farm Machinery incl Self-Propelled Haybine — Wayne Benson, Owner Art Kline, Auct

SAT APR 5 - 10:00 A.M. Pen-Yan, NY Fenton Farms All

Day Dispersal of Modern and Well Cared For Machinery Everything in like new condition! Owned by Warren and Gladys Fenton Sale by PIR-RUNG AUCTIONEERS, Inc., Wayland, NY 716-728 2520

SAT APR 5 - 10:00 A.M. Public Sale of Personal Property and Antiques Located 1734 Lincoln Highway East, Lancaster, PA, on the corner of Tennyson Dr & Rt 30, just 1/2 mile east of the traffic light at Bridgeport Sale by Pauline H Reynolds Ira Stoltzfus & Son and Jay Leary Auctioneers

SAT APR 5 - 1:00 P.M. New York Hereford Assoc 36th Spring Show & Sale Cornell University, Ithaca, NY

SAT APR 5 - 11:00 A.M. Public Sale of Nice 108 Acre Farm, Farm Equipment, Trucks, Cars, Antiques, Household, Etc Sale to be held at site of Real Estate, located 4 miles south of Dillsburg or 4 miles north of Wellsville on US Rt 74, thence turn west 1/2 mile at Barrens Church sign in Washington Twp., York Co., PA Earl Warehime and Nellie Laird Executors Clair R Slaybaugh Auctioneer

SAT APR 5 - Consignment Sale - Sechrist Sales Co 3rd Annual Spring Farm Machinery and Tool Sale Sechrist Auction Service Fawn Grove, PA 382-4379

SAT APR 5 - Public Sale held at Powl's Feed Mill, along Rt 272, 6 miles south of The Buck Sale by Wakefield Lions Club Kreider and Petersheim

SAT APR 5 - Public Sale of Real Estate, 1980 Mt Union RD PA Huntingdon Co Robert Fleck Auctioneer

SAT APR 5 - 9:30 A.M. Lykens Valley Farm Auction of Real Estate, Tools & Equipment, Antiques & Collectibles and Other Personal Property Located 3 miles North of Gratz along Mountain Road midway between Erdman and Pillow in Lykens Township, Dauphin

County of York, Harrisburg Maule A Daniels, owner George & Mike Deibert, Auctioneers

MON APR 7 - 6:00 P.M. Public Sale of Antiques and Household Goods & Tools Held at the Brickerville Fire Hall, just off Rt 322 (between Ephrata and Hershey), Brickerville, PA Charlotte-Rettew & John Zimmerman Owners T Glenn Horst and Timothy G Horst Auctioneers

FRI APRIL 11 - 10:00 A.M. Horse Sale at New Holland Sales Stables, New Holland, PA

FRI EVE, APRIL 11 - C H Wolgemuth & Sons Special new tool sale Located at our place

of business, 4 miles West of Manheim, Lancaster Co Pa Take Hosler Rd to Valley Rd Just North of Rt 283 and 10 Minutes from Lebanon- Hershey turnpike exchange Exit 20

FRI APR 11 6:30 P.M. Heifer Sale at the Keister's Middleburg Auction Sales, Inc., Rt 522, 3 miles East of Middleburg, 5 miles West of Selinsgrove, Pa Don & Walt Keister, Owners Auctioneers Ray Long & Dave Imes

SAT APR 12 - Public Sale of Farm Machinery & Personal Property Sale for Willis See, Rd 4, Linglestown, PA along Rt 443, between Fort Hunter & Manada Gap Harry H Bachman Auctioneer

SAT APR 12 - Inventory Reduction Auction at Capitol Tractor in Troy, NY Auction by Goodrich Auction Service

SAT APR 12 - 11:00 A.M. Public Sale of Farm Equipment & Household Goods, Located just west of Mountville, PA along Silvan Retreat Rd Donald & Ruth Boshnagle Owners Carl & John Diller Auctioneers

WED APRIL 16 9 A.M. Consignment Sale by David H Good located 1/2 mile North of Route 23 on North Maple Ave in Leola Lancaster Co Pa Watch for sale signs F Snyder R Martin C Wolgemuth J Fry and L Horst Auctioneer

PENNSYLVANIA LANDRACE ASSOCIATION

STATE SHOW & SALE

SATURDAY, MARCH 8, 1980

Show 9:00 A.M. Sale 1:00 P.M.

LOCATION:
Lebanon Co. Fairgrounds
Lebanon, PA



50 HEAD 50 Landrace, the Universal Breed.

BRED GILTS - OPEN GILTS - BOARS

LANDRACE TRADE MARKS

The original lean meat breed.
The world's best mothers.
More capacity to produce.
An asset to any herd.

Lunch Available by Lebanon Co 4-H
FOR CATALOGS WRITE TO:

LARRY G. BAUM

Secretary Penna. Landrace Assoc.
RD 3, Box 422, Elizabethtown, PA 17022
Phone: 717-367-2882

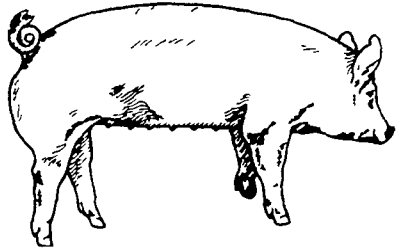
HOUVALE FARMS 4TH YORKSHIRE PRODUCTION SALE MARCH 4, 1980

SALE 1:00 P.M.

LOCATION: Lebanon Area Fairgrounds, Evergreen Road and Cornwall Road, Rocherty Road East off of Route 72, Lebanon, Pa.

Buy from one breeder at this sale and be confident.

YORKSHIRES



Most boars and gilts selling are unrelated to other Yorkshires in the East.

**SELLING 50 BRED GILTS
30 OPEN GILTS
20 BOARS**

All animals will be bled and negative to Pseudorabies and Brucellosis so they can go into any state on sale day.
For Catalogue, Write to:

ELWOOD E. HOUSER
R. D. #5, Box 70, Lebanon, Pa. 17042
Phone (717) 272-5798 or (717) 273-2921

(FREE LUNCH)

AUCTIONEER: HARRY BACHMAN



WOODACRES FARM MACHINERY AUCTION

5 TRACTORS - 2 TRUCKS - S.P. COMBINE - 15 WAGONS

SATURDAY, MARCH 15

AT 11 A.M.

4 3/10 mi. N. of Princeton, N.J. For Woodacres Farm located on Great Rd. 1 mi. S. of Blawenburg, N.J. 4 mi. S.E. of Hopewell, N.J. 14 mi. E. of New Hope, Pa.

Blizzard date March 17, 1980

Equipment Kept In Like New Condition!

11 A.M. - assort. barn tools, cement mixer, tank sprays, 10 KW generator, air compressor, 5 hyd. cylinders, PF scale, steam cleaner, 4x8 trailer, 3 wheel barrows, posts & wire, plywood calf sections, motors, Jamesway cleaner unit.

12 Noon Tractors - J.D. 3020 DL 3 PTH, J.D. 3010 DL 3 PTH, IHC 424 3 PTH WF, IHC 606 2 PTH WF, Farmall Super MTA. John Deere 45 self propelled combine 10 ft. grain hd. and 2 rows 235 corn hd. cab (like new), 1966 Ford F 600 w/grain body & ext. sides, 1964 Dodge 400 w/grain body, Hay Equip. - IHC 990 mower conditioner, NH 275 hay baler, NH 268 hay baler, Kuhn hay tedder, NH 55 hay rake, NI 400 hay rake, 4 flat bed 8 x 16 hay wagons on factory gear, 9 hay drying wagons 8 x 16 with 5 ft. sides all on factory gear w/wood frame drying hoods, NH 705 crop drying heater, Tehrmo Block crop drying heater, NH 60 and 75 ft. mow conveyor, Farmec 42 ft. hay & grain elevator, Farmec 24 ft. elevator, Farmec 22 ft. frame elevator, 20 ft. wood elevator. Tillage - J.D. 4 btm. semi mtd. 14" plow, IHC 2 btm. and 3 btm. hyd. plows, AC 10 ft. hyd. disc, Midwest 11 ft. leveling harrow, JD 16 ft. transport harrow, land packer, Brillion 9 ft. cultmulcher, JD 12 ft. spring harrow, IHC cultipacker. Planters, Pickers and other Equip. - IHC 400 cyclo 4 row corn planter 1 yr. old w/monitor, Gandy insect. boxes for 4 row, J.D. 17 hole grain drill, IHC fert. spreader, 300 gal. field sprayer, IHC 4 row 3 PTH rear mtd. cultivator, NI 323 1 row corn picker, IHC IPR 1 row corn picker, Woods 7 ft. rotary mower on rubber, IHC 120 balance hd. mower, IHC 40 PTO manure spreader, Superior 52 ft. PTO 6" grain auger on rubber, 3000 bu. metal grain bin! 1,600 bu. wire corn crib, Mayrath 12 ft. grain auger, 2 - Parker gravity flo grain wagons on factory gear, 300 gal. SS water tank, Dole moisture tester, IHC 33A front end loader w/buckets & plow. Note: Here is a tremendous opportunity to purchase equipment that has been kept in excellent condition! Owner & auctioneer not responsible for accidents!

Terms - Cash or Good Check with Identification Paid in Full Sale Day!

Owner,
WOODACRES FARM
Farm Manager
M.B. Sowerly,
609-466-0361

Sale Conducted By:
Col. Fred R. Daniel, Auctioneers, Inc.
Neshanic Sta., N.J.
201-369-4784

(Farm Sales Are Our Speciality)