

Livestock market and auction news

Oklahoma Cattle

Thursday, February 21
Report supplied by USDA
 Estimated Receipts 5600
 Same Day Last Week 3727
 Feeder Steers under 600 lb. 2.00 lower; over 600 lb. steady. Feeder Heifers under 500 lb. 1.00-2.00 lower, heavier weights steady to 2.00 lower, mostly steady. Demand good for cattle over 600 lb; Moderate for lighter weights. Supply largely medium frame 1 450-900 lb. Feeder Steers and 350-750 lbs. Heifers

FEEDER STEERS:
 Medium Frame 1 few 325-400 lb. 102.25-104.75; 400-500 lb. 92.50-100.00, lot 415 lb 107.00; 500-600 lb. 84.25-94.00; 600-700 lb. 79.75-87.75, bulk 81.50-85.00; 700-800 lb. 77.00-81.75; 800-900 lb. 75.00-78.00; 1005 lb. fleshy 69.50. Large Frame 1 1110 lb. fleshy 67.25. Small Frame 1 600-650 lb. 77.75-81.00. Mixed Medium and Large Frame 1 825-900 lb. 73.25-75.25. Medium Frame 1-2 425-450 lb. 88.50-91.25; 500-600 lb. 81.00-89.00. Large Frame 1-2 920 lb. 72.50 1050 lbs. 66.50. Large Frame 2 Holsteins 345 lb. 86.00; 660-690 lb. 72.75-74.75; 790 lb. 71.50.

FEEDER HEIFERS:

Medium Frame 1 350-400 lb. 87.00-91.25; 400-500 lb. 78.25-86.75, lot 415 lb. 89.25; 500-600 lb. 73.00-80.00, large share from 73.00-76.50 fleshy; short load 550 lb. 81.80; 600-700 lb. 73.00-77.00, lot fleshy 675 lb. 72.50; Load 775 lb. 69.00. Large Frame 1 720 lb. 73.75; 735 lb. 70.00. Small Frame 1 400 lb 86.25; 430-500 lb. 76.50-80.00; 510 lb. 76.00. Medium Frame 1-2 375 lb thin 84.50; 450-600 lb. 73.00-77.00; 675 lb 70.50; 700-750 lb 63.75-70.00

For the week Feeder Steers under 600 lb 2.00-3.00 lower; over 600 lb. 2.00 lower Feeder Heifers under 500 lb 2.00-4.00 lower; over 500 lb 1.00-2.00 lower. Demand good at the decline except for the fleshy offering which sold to light demand. Slaughter Cows mostly 1.00-2.00 lower; late sales Utility and Commercial 2-3, few 4 48.50-54.25, very high dressing lot 56.50. Few Canner and low Cutter 46.00-47.00. Bulls firm to 2.00 higher; YG 1-2 Bulls 1100-1800 lb. 62.00-67.00; high dressing 67.00-70.00. This weeks salable receipts near 15,000 head compared with 8783 head last week and 14,524 head the same week one year ago. Feeder Cattle and Calves made up 94 percent of the weeks run, cows and bulls 6 percent

Leesport Auction

Wednesday, February 20
Report Supplied by PDA

CATTLE 202. Compared with last Wednesday's market, slaughter steers weak to \$2 lower. Slaughter cows \$2 to \$3 lower. Choice 980-1270 lbs. slaughter steers 67.60-69.75, one at 70.75. Good 62.35-67.00, Standard 60.25-62.50, Standard & Good holsteins 1300-1450 lbs. 59.10-63.25. Few Choice 830-1330 lbs. slaughter heifers 62.75-66.75, few Standard 57.50-57.60. Utility & Commercial slaughter cows 50.60-54.50, few to 58.50, Cutters 50.00-53.60, few Canner & Low Cutter 47.50-51.00, Shells down to 38.25. Yield Grade #1 1145-1775 lbs. slaughter bulls 60.00-66.00, few 1015-1165 lbs. 55.25-59.25. Low Medium Frame #1 890 lbs. feeder steers 73.25; lot Medium Frame #1 850 lbs. feeder bulls at 60.50.

CALVES 134. Vealers grading Standard & Low Good mostly steady. One Prime vealer at 119.00, Choice 107.00-114.00, few Good 98.50-106.00, few Standard & Good 115-130 lbs. 83.00-92.00, 90-110 lbs. 75.00-86.00, few 70-85 lbs. 70.00-80.00, few Utility 55-80 lbs. 55.00-70.00. Farm calves, holstein bulls, 90-130 lbs.

92.50-137.50; mostly 100.00-135.00; holstein heifers 90-125 lbs. 177.50-205.00; few beef cross bulls & heifers 90-130 lbs. 112.50-147.50.

HOGS 332. Barrows & Gilts \$1 to \$1.50 lower. US No. 1-2 200-235 lbs. barrows & gilts 39.00-40.00, No. 1-3 195-265 lbs. 38.00-39.35, few No. 2-3 185-275 lbs. 36.00-38.00, few No. 1-3 145-160 lbs. 31.50-33.00. Sows \$2 to \$2.50 lower. US No. 1-3 285-580 lbs. sows 33.00-36.50, Few Boars 26.00-29.00, few light weights 160-215 lbs. 30.00-33.50.

FEEDER PIGS 186. US No. 1-3 30-55 lbs. feeder pigs 58.00-61.00 cwt., lot 68.00, few No 1-3 60-70 lbs. 40.00-51.00 cwt., No. 1-3 75-125 lbs. 37.00-43.00, Utility 30-50 lbs. 31.00-39.00 cwt.

SHEEP 29. Few Choice 85-115 lbs. woolled slaughter lambs 70.00-74.00, few Good 65-90 lbs. 60.00-68.00; few Choice New Crop 50-70 lbs. 101.00-104.00, one 35 lbs. at 140.00

GOATS 13. Large 33.00-48.00 per head, few small 23.00 per head.

Belleville Auction

Wednesday, February 20
Report supplied by PDA

CATTLE 155. Compared with last week's market, slaughter cows \$1-\$2.50 lower. Few Choice slaughter steers 67.00-69.00, few Good 64.10-66.85, few Standard 61.10-63.75. Utility and Commercial slaughter cows 49.50-54.00, couple to 56.75, Cutters 52.00-54.85, Canner and Low Cutters 47.00-51.75, Shells down to 42.25. Individual Good slaughter bullock at 64.00. Few Yield Grade No. 1, 880-2200 lbs. slaughter bulls 60.00-68.75. Few Large Frame #1, 500-800 lbs. feeder steers 71.00-82.50.

CALVES 166. Few Choice vealers 115.00-123.00, few Good 100.00-105.00, 70-95 lbs. 70.00-83.00. Farm Calves: Holstein bulls 90-125 lbs. 85.00-145.00, mostly 110.00-130.00; few Holstein heifers 100-140 lbs. 122.50-210.00.

HOGS 301. Barrows and gilts \$1-\$2 lower. US No. 1-2 200-255 lbs. barrows and gilts 38.10-39.00, No. 1-3 200-255 lbs. 36.85-37.85, lot No. 1-3 150 lbs. at 35.25. Few US No. 1-3 250-425 lbs. sows 34.75-38.25. One lot Boars at 31.50.

FEEDER PIGS 167. US No. 1-3 25-45 lbs. feeder pigs 24.00-29.50 per head, No. 1-3 65-100 lbs. 37.50-41.00 per head.

SHEEP 24. Few Choice 85-100 lbs. woolled slaughter lambs 67.50-70.00. Slaughter ewes 28.00-38.00.

Belknap Auction

Dayton, Pa.

Wednesday, February 20
Report supplied by auction
CATTLE 95. Compared with last week's market, slaughter cows about steady. Few Good slaughter steers 62.00-64.50, few Standard 56.00-58.00. Couple Choice slaughter heifers 64.50-67.00, few Good 60.00-62.50, few Standard 48.00-56.50. Utility

and Commercial slaughter cows 53.00-58.75, one at 62.50, Cutters 51.00-54.50, Canner and Low Cutters 44.00-51.00. Few Yield Grade No. 1, 1050-1975 lbs. slaughter bulls 64.00-67.50. Medium and Large Frame #1, 550-980 lbs. feeder bulls 61.50-70.25.

CALVES 103. One Choice vealer at 133.00, few Good 100.00-112.00, Standard and Good 90-120 lbs. 80.00-100.00, 65-85 lbs. 60.00-82.00. Farm Calves: Holstein bulls 90-145 lbs. 102.00-135.00; few Holstein heifers 100-110 lbs. 120.00-155.00.

HOGS 402. Barrows and gilts \$2-\$3 lower. US No. 1-2 210-245 lbs. barrows and gilts 38.50-39.50, No. 1-3 200-255 lbs. 37.50-38.50, No. 2-3 200-265 lbs. 35.00-37.50. Sows weak to 50 cents lower. US No. 1-3 300-570 lbs. sows 31.50-38.50. Boars 29.00-34.00.

FEEDER PIGS 154. US No. 1-3 30-50 lbs. feeder pigs 15.00-27.50 per head, Utility 25-35 lbs. 9.00-14.50 per head.

Omaha Cattle

Thursday, February 21
Report supplied by USDA

Weekly 51 — Cattle —
 Closing prices on Slaughter Steers and Heifers were steady to 25C higher. Cows were 1.50-2.50 lower, and bulls steady. A limited volume two-way feeder steers sold steady to 1.00 lower during the week.

Four day receipts this week: 11100; Last week 15,500; Year ago 9,900.

STEERS: At midweek, five loads Choice and few Prime predominantly 3 1094-1150 lbs. 68.75-69.00. Choice 2-4 1000-1275 lbs. bulked at 67.00-68.75, some large share 4 or quite muddy 65.50-67.00. Mixed Good and Choice 2-3 1000-1250 lbs. 66.50-67.25. Good 2-3 63.00-65.50, few Holsteins 60.50-62.00.

Hunter's Auction

Monday, February 18
Report supplied by auction
FEEDER STEERS:
 Standard to Good 66.00-72.00.

COWS: High Choice to Prime 53.75-54.25; Good to Standard 51.75-53.00; Utility 50.75-51.00; Cutters 47.75-49.50; Cannors 46.75-47.00.

CALVES: Prime 200-275 lbs. 95.00-110.00; High to Choice 140-180 lbs. 92.00-109.00; Good to Choice 120-140 lbs. 98.00-134.00; Standard to Good 90-110 lbs. 92.00-120.00; Utility 75-85 lbs. 78.00-89.00; Low Utility 65-75 lbs. 60.00-80.00.

FEEDER PIGS: 20-25 lbs. \$12 to \$18 by hd.; 25-35 lbs. \$18 to \$24 by hd.; 35-45 lbs. \$22 to \$27 by hd.

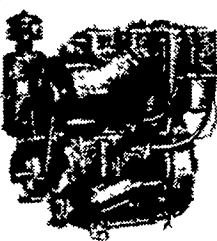
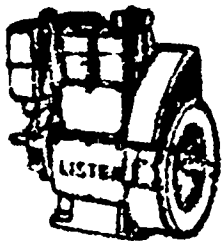
SOWS: 30.50-36.50.
BOARS: 31.00-37.00.

SMUCKER'S SALES & SERVICE

RD #2, BOX 21
 NEW HOLLAND, PA 17557

DISTRIBUTOR FOR:

LISTER, PERKINS & SLANZI DIESELS



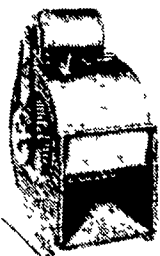
• Good used diesel engines

• New Sputnik wheels and parts

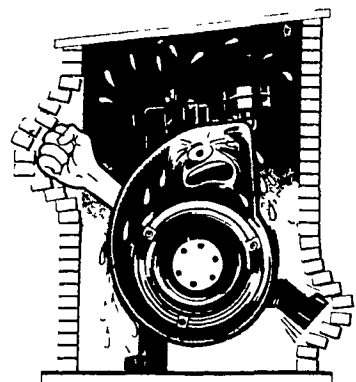


We mount diesels on balers, crimpers, cornpickers, etc.

Install a blower fan for better diesel & refrigeration cooling. Longer life on diesel.



LET ME BREATHE!

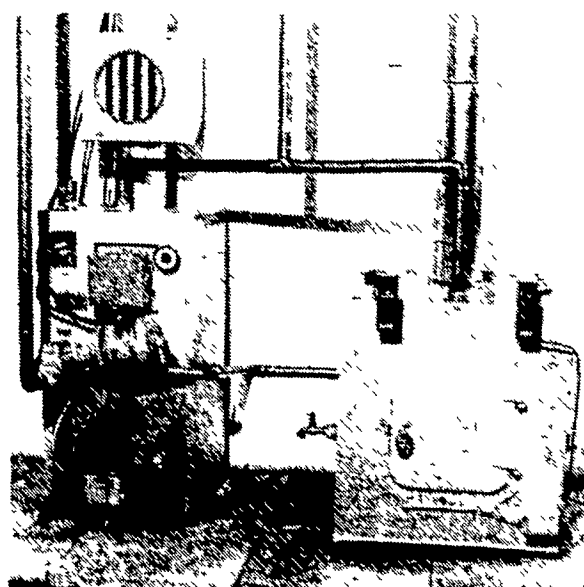


For lower cost per hour power, rely on



FOR PROMPT SERVICE CALL
 717-354-4158 OR IF NO ANSWER
 CALL 717-354-4374.

Use A Mascot Wood Hot Water Boiler With Your Existing Boiler



FEATURES:

- Fire Brick Lined
- Automatic Draft Control
- Boiler Plate Steel Construction
- ASME Tested
- Heats Average Size Home
- Insures Against Power Failure, Fuel Shortages and High Heating Costs



HIESTAND'S WOOD STOVES
 Your One-Stop Wood Burning Center
 1830 S. State St., East Petersburg, PA
 Phone: 717-569-7397