

## Public Sales Register

Closing Date - Monday, 5:00 P.M.  
of each week's publication

SAT MARCH 8 - Show 9 A.M., Sale 1 P.M. PA Landrace Association State Show & Sale Located at Lebanon Co Fairgrounds, Lebanon, Pa. 50 head Bred Gilts, Open Gilts & Boars. For Catalogs write to Larry G. Baum, Secretary Pennsylvania Landrace Assoc., R.D. 3, Box 422, Elizabethtown, PA 17022

SAT MAR 8 9:30 A.M. Large Outstanding Antique Sale. Oak Furniture, Clocks, Brass, Copper & Iron Items, Fine Glassware & Pottery, Hummel Items and Jewelry. From a Well Known Family and Collector in York, PA. Held at the Winterstown Fire Hall, along Rt. 24 in Winterstown Boro, York Co., PA. Sale managed by Sechrist Auction Service.

SAT MAR 8 - 10:00 A.M. Autotore's Auction of Pool Accessories, Farm Equipment, etc. Located off Rt. 93 south of Berwick to St. John's or off I 80 at the Cunningham exit #38 follow Arrows Sale by William Weeks, Weeks Wool's John Autotore & John Autotore Jr. Auctioneers.

SAT MAR 8 - 10:00 A.M. Public Sale of Farm Machinery, Household Articles, Antiques, Etc. Located approx 6 miles north of Shippensburg, PA along US Rt. 11 Frank & Hazel

Kurtz Owners Hershey & McLaughlin Auctioneers

SAT MAR 8 - 1:00 P.M. Public Sale of Bred Gilts, Boars, & Open Gilts Held at Dutchess Co., Fairgrounds, Rhinebeck, NH. Karl Ehmer Owner Max Heflich Manager

SAT MAR 8 - 9:00 A.M. Public Sale of Farm Machinery, Lawn & Garden Equipment, Household Goods and Antiques. Located 7 miles from Exit 9, I 81 or 4 miles from Exit 15, PA, Turnpike on Rt. 696, mid way between Newville and Roxbury at intersection 641 & 696. Sale for Newburg Hopewell Volunteer Fire Co. Auctioneers, Art Rife, Paul Eppley, Dennis Brownawell, Ed Weibley and other local auctioneers.

SAT MAR 8 - 11:00 A.M. Public Sale of Farm Equipment. Located off Rt. 44 in the village of White Hall, 15 miles north of Bloomsburg, PA. 8 miles south of Turbotville, PA. 1 1/2 mile north of White Hall on the Road to Katy Church Seller Mr. & Mrs. Norman Steck Auctioneer Gele L. Derr

SAT MAR 8 - 11:00 A.M. Public Sale of Farm Machinery, Milk Equipment, and Household Goods. Located on Perkins Hill Rd., signs on Rt. 213 about 5 miles north of Chestertown, MD. Estate of

Morris L. Walbert Harry Rudnick & Sons Inc. Sale Managers and Auctioneers

SAT MAR 8 9:00 A.M. Public Sale of Fine Antiques Household Goods, Tools and Watches. Located at 712 Rohrerstown Rd., across from Pennfield Feed, Inc., Village of Rohrerstown, Lancaster Co., PA. Take Rt. 30 about 3 miles west of Lancaster to Rohrerstown Exit Sale by Cora Weidman Estate Howard Shaub and Roy C. Probst Auctioneers

MON MAR 10 - Public Auction of Farm Equipment for John Eby and Isaac Eby location Take Rt. 322 West from Ephrata to Weidmansville Road, turn right to first left, then first right to farm on right John E and Paul E. Martin, Auctioneers

MON MAR 10 10:30 A.M. Public Sale of Farm Equipment and 20 Bred Holstein heifers. Located along Mountain View Rd., 7 miles east of Shippenburg, Cumberland Co., PA. Sale for Paul W. Sauder

Nevin Z. Martin Auctioneer

MON MARCH 10 - 1 P.M. Public Auction of Valuable 34 Acre Lancaster County Farm located in Rapho Twp., Lancaster County, Pa., just South of Rt. 230, 2 miles East of Mt. Joy Borough, along the Eby Chiques Road to east side of Nat'l Cash Register Co. Sale by

Lois E. Will, E. M. Murry Associates, Auctioneers

TUES MAR 11 - Public Sale of Farm Equipment, Shop Tools & Household Goods. Located 1 1/2 miles West of Ephrata along Meadow Valley Road. Sale for Harvey N. & Esther H. Zimmerman Auctioneers - Nevin Martin & Lewis Groff



## PUBLIC SALE

### SATURDAY, MARCH 29

9:30 A.M.

Consignment sale of farm machinery and misc. items at G and M Livestock Market, Inc., located on Route 220, southwest of Hollidaysburg, near Duncansville.

NOTE: If you have machinery and etc. to consign—we would be glad to sell it for you. For consignment of any large machinery contact me before March 7, 1980, so I can list it later on a sale bill.

John J. Dilling - Phone: 793-3579

or mail list to John J. Dilling

R.D. #2, Box 89

Martinsburg, Pa. 16662

or let list at G and M Livestock Market.

## PUBLIC AUCTION

Retiring from farming, Sale on the "Rasin Farm", Drayton Manor Road, just off route 298, 7 miles Northwest of Chestertown, Worton, MD.

MONDAY, MARCH 3, 1980

At 12:00 Noon

FARM MACHINERY JOHN DEERE 4020 Diesel TRACTOR, Allis Chalmers D17 Diesel TRACTOR (Both Tractors in Excellent Condition), JD 12' roller harrow, JD flat wagon, JD 12' road disc, JD 3 section spring tooth, JD 4 row rotary hoe, JD 4 x 16 Plows, JD 4 row rear cultivators, JD 494 Planter, JD 200 gal. sprayer, AC WD TRACTOR w/loader, AC grader blade, AC front 4 row cultivators, AC trailer mower, AC sub soiler, AC 2 row cult. INT. #10 GRAIN DRILL, NH #56 rake, NH 48' elevator, Saw bench, chain saw, log chains, grease equip., and other items

OWNER

WILLIAM O. ANDERSON, JR.

Worton, Maryland (Lunch)

HARRY RUDNICK & SONS, INC.

Sales Managers & Auctioneers of Galena, MD (301) 648-5100

## 17th ANNUAL SPRING SALE

KEMPTON COMMUNITY CENTER

FRIDAY NIGHT, MARCH 21 - 5:00 P.M.

Tractors and Farm Trucks (No Cars)

SATURDAY, MARCH 22 - 9:00 A.M.

Small Items (outside) and farm equipment

Receive tractors, farm equipment

Small Items (outside)

MARCH 15 to 20 - 8:00 A.M. to 4:00 P.M.

each day only

FRIDAY NIGHT, MARCH 28 - 5:00 P.M.

Household goods & Antiques

SATURDAY, MARCH 29 - 9:30 A.M.

Household goods, Antiques, Lawn & Garden Equipment, Yard Goods etc

Receive Household goods, Antiques,

Lawn & Garden Equipment

MARCH 25 to 27 - 4:00 P.M. to 8 P.M.

each day only

No Applications, Junk will be refused

All goods on a commission basis

12 Auctioneers - Consign your items now

Deadline for Advertising is Midnight,

February 23, 1980

For Additional Information write:

KEMPTON SALE

Box 42

Kempton, PA 19529

or call 215-756-4249, 756-6975, 756-4279, or 298-2271 Sale weeks only 215-756-6444

Sale Committee

## SPRING CONSIGNMENT AUCTION

OF FARM EQUIPMENT, TRUCKS, TOOLS & OTHER FARM RELATED ITEMS

### MONDAY, MARCH 10

10:00 A.M.

Located at auction barn in American Corner, MD on Hwy. 621 between Denton & Federalsburg, MD.

JD 7700 combine with 16' floating head, approx 840 hrs. TRACTORS - JD 4320 with cab & duals, JD 4020, Int. H MACHINERY - JD 1240 plate type planter, JD 6 x 16 semi mounted plows, 1966 10 wheeler with 2200 gal. aluminum tank, 1958 Ford 2000 gal. tank, Little Champ truck camper

This is only a partial listing

Terms: Cash.

A. Curtis Andrew Auction Inc.

Auctioneers

301-479-0756

VERNON & MAJORIE E. GEHM

(Pronounced Game)

## DAIRY DISPERSAL

CENTER LISLE, NY

### FRIDAY, FEBRUARY 29

11:00 A.M.

Having decided to discontinue dairy farming, we have been commissioned by Gehm to sell their cattle at Auction, on the farm just off Rt. 79, 5 miles west of Whitney Point, N.Y. Use exit 8 off I-81 to Whitney Point.

### 169 Mature Holsteins - 169

All are mature Holsteins and you will find a good herd here with 80 handling or springing, quite a few fresh. Many bred back for fall, balance in all stages. The herd has been housed in a conventional tie stall barn and milked in a parlor. Mostly young dairy with many 1st and 2nd calf heifers. Herd has been pregnancy checked and has had 4 way shots.

They are blood tested, brucellosis & TB tested and are eligible for interstate shipment.

P.S. Don't miss this big dairy dispersal Friday, February 29, 11:00 A.M.

Cash or one way checks. Lunch Available.

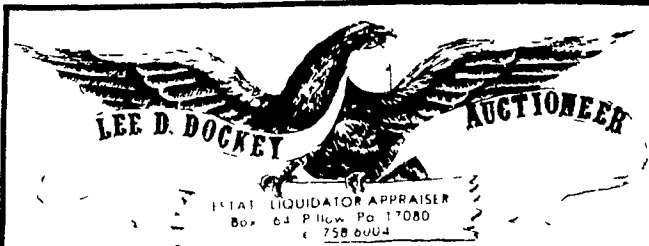
Owners

VERNON & MARJORIE GEHM

Sale Co-Managed By

Mel Manasee  
Whitney Pt., NY  
607-692-4540

Charles H. Manasee  
Whitney Pt., NY  
607-692-3516



## PUBLIC SALE

### SATURDAY, MARCH 29, 1980

1:00 P.M.

Located 5 miles south of Halifax, Pennsylvania; 1/4 mile east of the Village of Matamoras and Route 225.

FARM

\* 55 Acres, more or less, approximately 35 acres tillable.

\* 2 1/2-Story Frame Dwelling, 7 rooms with bath, heated with Hot Air Oil Furnace.

\* Attached 2-Story Frame Summer House, 1st floor having a large walk-in fireplace.

\* Large Pond

\* Southern boundary of farm has frontage along Powell's Creek

\* Scenic view of Powell's Creek and Peter's Mountain

\* Farm is an approximate fifteen minute drive north of Harrisburg

If you're looking for a place to get away from it all, check the features of this farm. For additional information or inspection of farm, phone 717-758-6004.

TERMS 10% Down. Further terms and conditions to be given the day of sale.

OWNERS

P. SCHMIDT AND B. SPECHT

Wiest, Wiest & Saylor, Attorneys at Law

William H. Wiest, Atty.

Dockey, Auctioneer

## PUBLIC AUCTION

ANNUAL SPRING FARM MACHINERY CONSIGNMENT SALE at RUDNICK'S SALES BARN, GALENA, MD.

### MONDAY, FEBRUARY 25, 1980

At 10:30 A.M.

'76 FORD 9700 Diesel TRACTOR w/cab, heater, radio, dual wheels '74 FORD FORD 5000 Diesel TRACTOR, A C GLEANER (M) COMBINE, 16' Grain Table, 6 row corn head A630, I H 6-row corn planter w/Gandy spreaders A C 8-row No-Till Planter #600, JD Chisel Plow #E100, I H offset Road Disc 24" blades, I H disc Drill, I H road disc 12', John Blue sprayer #3000, A C Field Cultivators, Bush Hog 16' rotary cutter, Westgo 6-row rear cultivators, M F 3 bot mounted plow, Midwest plow rake, A C crowfoot cultipacker, 200 gal fuel tank w/12v elec pump '67 FORD DUMP TRUCK 16' grain body, '70 FORD DUMP 16' grain body CONIGNED by-ANTHONY DURHAM

A C XT190 DIESEL TRACTOR, A C 200 Diesel TRACTOR w/cab, AC flat wagon, AC 4 row planter, AC 7' mower, AC 4 row rear cultivators, AC scraper blade, AC #1200 Field Cult w/Midwest harrow, AC road disc, AC 4 row rotary hoe, AC 12' cultipacker, AC 5x16 plows, AC 4x16 slatted Plows, Bush hog 12' disc, Athens plow, etc, Bush Hog 4-40" row rotary cutter, etc etc CON-SIGNED by-J E LARRIMORE

MF 135 TRACTOR, MF 40 TRACTOR, MF 65 TRACTOR & front-end Loader, Lilleston Mower, Hardy PTO Sprayer, JD 2x Plow, Grader balde, JD 25A Flail Mower, front Snow Blade, Army Generator, JD #317 Garden Tractor & Mower, Chain Saw, '74 Chev K5 Blazer, '75 4-w/d JEEP Pickup CONIGNED by-FAIRGALE FARMS

ALSO '75 Ford Diesel #642 COMBINE w/cab six & four row corn heads 30" & 36" and 17' grain head (983 hrs) JD 6 30" Cultivators, Glenco 10' chisel plow, Straw Chopper for 770 Combine, pair 200 gal Anhydrous tanks, '71 Int 1890 Truck Tractor, Fruehauf 30' lowboy Trailer, '70 JD 4020 D TRACTOR, IH 12 row 30" Air Planter 3 pt hitch & pull Trailer, JD 6-row no-till Planter 30" Gandy att w/JD coulters, 40 lengths of Alum Irrigation pipe 6" & 8", plus many, many other consignments. Lots of shop tools and misc equipment.

DON'T MISS THIS SPRING SALE, THE MEETING PLACE FOR BUYERS & SELLERS. Call in advance for free advertising.

HARRY RUDNICK & SONS, INC.

"AUCTIONEERS", GALENA, Md. 21635

Phone: Day (301) 648-5100 & 648-5179

Nite (301) 778-0804 or (302) 764-3347