

## Sale Reports

A Public Auction of farm equipment was held February 11 by Elmer S. Hoover, Bethel, Berks Co. There were 288 registered buyers present.

Some items sold were: 1975 Int. Truck \$16,000, Oliver 1755 D Tractor \$9100, Oliver 1850 D Tractor \$7350, Oliver 880 D Tractor \$2600, M.F. 30 D Tractor w/loader \$6600, Gehl Mixer Wagon \$8000, J.D. 700 4-row Planter \$3725, Bush Hog Wing Mower \$3750, Bush Hog Wing Disc Harrow \$4500, and Oliver 7-B 18" Reset Plow \$3300. A Kubota B7100 4WD Tractor and Mower were sold for \$4750.

Auction conducted by John E. & Paul E. Martin, Aucts.

A Public Auction of Pequea Woodworking tools and inventory by Jacob Z. Stoltzfus, was held at the Ronsks Fire Hall, 6 miles east of Lancaster, on Feb. 16th.

Some prices received were: Table Saw \$300, Dewalt Radial Saw w/motor & stand \$350, 9" Rockwell Mitre w/Air Motor \$425, Carbide tipped Saw Blades \$30, 48" Fletcher-Terry auto. Glass Cutter \$150, 1/4" Exten. Drills \$30 ea., 10" Rockwell Unisaw w/long Exten. Bars \$280, 20.2 cu. ft. G.E. Refrigerator \$500, & Cherry Corner Cupboard \$225.

Auctioneers were Alvin L. Miller and Elvin Siegrist.

A Public Sale of a Drumore Twp. farm was held February 16 by John M. and Sally M. Gibson, 19 miles south of Lancaster. Over 150 persons attended the sale.

The 127 acre farm was sold for \$218,000 to Jonathan Z. King, 262 Strasburg Pike, Lancaster. It contained a full set of farm buildings.

Auctioneer was Claude F. Smith.

The Gap Auction held their weekly sale February 8 off Route 41 in Gap.

Some prices received were: Bed w/Clawfeet \$210, Dining Room Suite \$280, Sec. Desks \$200 & \$210, Brass & Iron Bed \$150, Oak Washstand \$120, Modern Corner Cupboard \$140, Oak Singer Sewing Machine \$60, Hog Scraper Candlestick \$90, Banjo \$170, Set Noritake Dishes \$505, Roseville Pottery \$30 & \$31, and Limoges Candleholder \$38.

Auctioneers were Ira Stoltzfus & Son and Jay Leary.

A large 2 day Public Sale was held February 15 and 16 by Roy and Janet Baker, near Locust Grove, York Co., with good attendance both days.

Some items sold included: Oliver 1500 Tractor \$2850, Int. B414 Tractor & Loader \$4000, N.H. Grinder-Mixer \$3000, M.H. 7" Self-Prop. Combine \$1500, McCurry Bin Wagon \$510, Little Giant Drag Elevator \$400, 12 hp. Merry Tiller Garden Tractor \$575, 1979 Travel Trailer \$4400, Gulbransen Organ \$3100, Sleigh \$150, Strings of Brass Sleigh Bells \$225 to \$350, Big Meat Grinder \$275, Butcher Scales \$30 to \$100, Maple Dinette (table & chairs) \$500, Hutch \$250 and Maple Corner Cupboard \$150.

Auctioneers were Robert L. and Thomas H. Sechrist.

A Public Auction of farm equipment and antiques was held February 16, by Mrs. Carl Peter, 18 miles northwest of Allentown, Lehigh Co.

Prices received were:



Ford 6600 D Tractor \$12,100, Ford 3-B Roll Over Plow \$1775, N.H. Rake \$1200, J.D. Baler \$1050, Dump Wagon \$1300, Ford Jubilee Tractor \$2000, Ford 5000 Tractor \$5125, Stretcher Base Table \$975, Swan-type Sleigh \$700, and 1 Horse sleighs \$475 & \$220.

Ralph W. Zettlemoyer Auction Co. conducted the sale.

There was good attendance at Lowery's Public Sale of antiques on February 16 at 580 W. Main St., Mt. Joy, Lancaster County. Sale held by E. V. (Larry) Lowery.

Items sold included: Man's Wrist Watch \$90, Safe \$100, Tiffany Light \$260,

Childs Old Spinning Wheel \$270, and Silver Dollars \$27 to \$33 each.

C. H. Wolgemuth & H. Shaffner Auctioneers.

A Public Auction of cows and dairy equipment was held February 15 by John H. Lamb Sr. and David M. Lamb, north of Downingtown-Coatesville Bypass, Chester County, Pa.

The 67 cow herd averaged \$1097 with 10 cows selling between \$1500 and \$2025.

Other prices were: 20 x 60 Fickes Silo \$2400, Bou-Matic Pipe Line Milker \$3450, Hay \$40 & \$50 per ton and Ear Corn \$80 & \$81 per ton.

Sale conducted by Whitford Sales Co., L. Robt. Frame, Auct.

## WHAT'S NEW

CHEROKEE, Ia. — Radial Arm, Inc. presents its newest circular shelter for use over its center pivot Radial Arm barn cleaning system.

This new self-cleaning system allows producers to choose either economical natural ventilation or full environmental control. The circular design allows positive cross ventilation with minimal breeze from

any direction.

Capacity of each unit is 102 head.

The package includes the Radial Arm cleaning unit with a 2 hp hydraulic drive, 12 curved sidewall sections 7'6" wide by 7' high constructed with 2x4 studs 16" on center, steel strong panel exterior and Kal-Lite pig barrier on the inside. A 30 foot grain bin roof is easily installed on the sidewalls and is then insulated with pre-cut polystyrene.

## ALL TYPES OF FARM BUILDINGS

- Broiler Houses
- Layer Houses
- Pullet Houses
- Hog Houses
- Cattle Barns
- Horse Barns

And Many Others

Will Design To Your Needs  
Call:

**REYNOLDS & YELLOT CO., INC.**

12800 Gores Mill Rd.  
Reisterstown, MD 21136  
Over 24 Years Experience  
301-833-1840



STOP & SEE US AT SPACE 246 & 247  
OF THE PA. FARM EQUIPMENT EXPOSITION  
Farm Show Building  
Harrisburg, Pa. - Feb. 28, 29 - Mar. 1



## ATTENTION

**MANUFACTURERS — O.E.M. ACCOUNTS**



# DEALERS FARMERS



We are proud to announce that we are now a

# JOHN DEERE ENGINE DISTRIBUTOR

We can fill your diesel engine needs with John Deere engines from 50 to 275 horsepower, from bare engines to complete power units.

For More Information on Availability & Discount Structure.  
Please Call

**EVERGREEN TRACTOR CO., INC.**

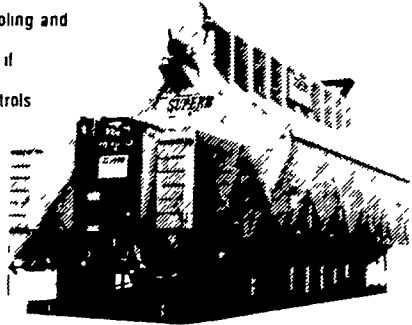
30 Evergreen Rd., — P.O. Box 269  
Lebanon, Pa. 17042

**(717) 272-4641**

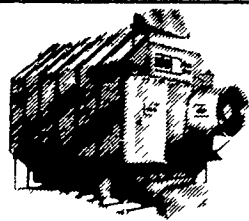
SAVE up to 50% on energy costs!

**SUPERB ENERGY MISER** CONTINUOUS FLOW ALL-CROP DRYERS

- Recycles heat from cooling and drying
- Easy to exhaust all air if desired
- Drying Optimizer controls cooling and drying air proportions
- Can use low drying temperatures for heat sensitive crops
- Exclusive cleanout system!
- Walk in internal access
- Factory preassembled
- No crane required
- Very quiet efficient drying
- Easy internal access
- Internal vaporizer included



- Nine models available (250 to 1000 BPH)
- Options: Automatic Moisture Control PTO drive Dryeration combination drying rice drying



**SUPER B**

STAGE CONTROLLED AUTOMATICS  
Sweat Drying  
Set the dial Flip the switch Forget it

Dry 2000 bu/day 25-15% for as low as \$8995  
Additional Winter discounts on all models!

**GAYLORD EQUIPMENT**

88 Ridge Rd  
Mommouth Jct N J 08852  
Phone 201-329-2666