

Cumberland Holsteins

(Continued from Page C25)

and committee member Galen Smith presented trophies to outstanding junior members.

In the senior division gaining top boy award was Bradley Beidel, Carlisle; girl award - Sharon Cornman, R6 Shippensburg; junior division boy was Gerald Davidson, R2 Shippensburg; and girl award - Colleen McGillvray, Newville. Awards were based on 1979 project books.

Holstein Club Director John Cope served as the Master of Ceremonies.

Cope related to the group many of the strong points of the Holstein club while highlighting the work of the Dairy Promotion Committee

along with the county's three Dairy Princesses Karen Hornbaker, Sharon Cornman and Ann Basehore.

Cope stated that the promotion committee completed programs in seven school districts exposing some 16,000 children, grades kindergarten to fifth grade, to the dairy cow and the product she produces - milk.

Dairy promotion programs have been presented at the Capitol Mall, and at various department stores and supermarkets in the Cumberland County area.

The three Dairy Princesses manned a dairy refreshment bar before and

after the meeting and Princess Karen Hornbaker made additional comments on the past years activities of the promotion committee.

Speakers highlighting the event were Robert Pepple, Chester County Holstein breeder and William C. Nichol, Executive Secretary of the Pennsylvania Holstein Association.

Pepple, a 1968 dairy science graduate from Penn State, expressed his views on "Why I breed registered Holsteins." Pepple was born and raised on a family operated farm.

"As I grew the farm grew with me" stated Pepple. "I graduated from high school and with the encouragement from my parents I attended Penn State majoring in dairy science.

"By seeing other possible careers at Penn State my viewpoint on a vocation was broadened."

Pepple said he realized that with good sound management and business practices a person could make dairy farming just as profitable and worthwhile as any other career he had come in contact with at Penn State.

Upon returning to the home farm and marrying, Pepple and his wife Jane were responsible for the calf raising program and medical needs of the family herd. Later, with the encouragement of his parents again, in 1972 Pepple purchased 200 acres from the family farm and 70 head of cattle from the family herd.

Pepple almost im-

mediately went on a production testing program and began classifying his herd stressing that by classifying he felt he could more intelligently make herd mating decisions.

Since that move to go on their own, Pepple and his wife have increased their herd BAA percent from a 98.1 in 1973 to a BAA percent of 104.6 in 1979. After his last herd classification, Pepple had four excellent cows and 27 very goods.

Presently the Pepples milk 80 cows with a rolling herd average of 18,000 pounds.

In closing, Pepple said he

breeds registered Holsteins for quality not quantity. He is comfortable with a family farm situation and feels that the Holstein breeders face a tremendous challenge in meeting the needs of today's people.

Pennsylvania Holstein Association Executive Secretary William C. Nichol expressed to members that in 1980 the State Association hopes to concentrate their efforts more fully on the local county Holstein clubs.

He said he feels the Association will strive for a closer contact with clubs

hoping to supply their needs.

Nichols related that Pennsylvania has developed a good national reputation as a keystone for Holstein breeders and that Cumberland County is helping to uphold that reputation.

Nichols also stressed the importance of constantly striving for herd improvement.

The ways of gaining this improvement which Nichols stressed were: Testing once a month and finding out who your best producers are;

(Turn to Page C30)

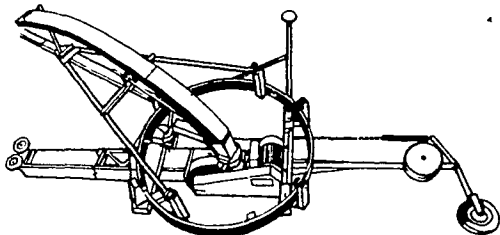


Four outstanding junior members of the Cumberland County Holstein Club were presented awards during the club's annual banquet and meeting. They are Senior Boy, Bradley Biedel, Carlisle; Senior Girl, Sharon Cornman, R6 Shippensburg; Junior Girl, Colleen McGillvray, Newville; and Junior Boy, Gerald Davidson, R2 Shippensburg. Members were selected on project books.

FREE VEST!



We have a free down-filled vest for you when you purchase a new Pow-R-Trac ring drive silo unloader. Stop in soon and compare Pow-R-Trac features with ordinary unloaders OFFER GOOD UNTIL APRIL 1, 1980.



BADGER RING DRIVE SILO UNLOADER
Cleans wall-to-wall, top-to-bottom Multiple suspension • Double auger flitting and knives • Separate digger wheel



SEE YOUR LOCAL BADGER DEALER

Ask him for a FREE COPY of "Update", our publication packed with helpful information for farmers.

ALLEN ZEIGLER

RR 1
Leighton, PA 18235
(717) 386-4593

CECIL DAIRY SERVICE

RD 1 Rt 274
1/2 Mi South Rising Sun, MD 21911
(301) 658-6923

PIKEVILLE EQUIPMENT INC.

RD 2 Oley, PA 19547
(215) 987-6277

AUMILLERS SALES & SERVICE

RD 1 - Box 63
Milroy, PA 17063
(717) 667-2373

GRUMELLI'S FARM SERVICE

Mechanics Grove
Quarryville, PA 17566
(717) 786-7318

LLOYD E. KREIDER

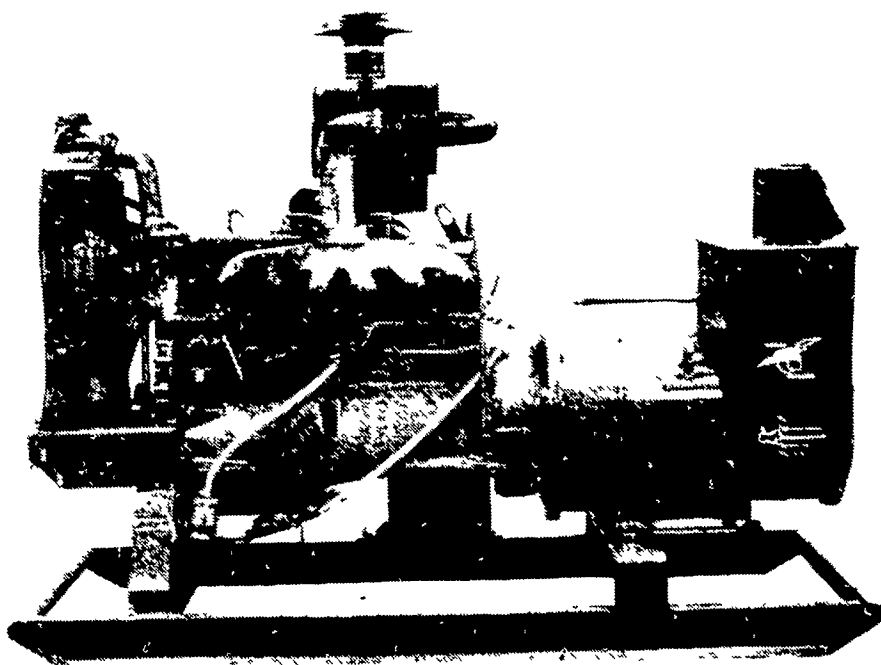
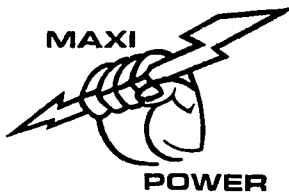
RD 1
Cochranville, PA 19330
(215) 932-4700

ROY CHRISTMAN

RD 1
Hamburg, PA 19526
(215) 562-7218

SHOW-EASE STALL CO.

523 Willow Rd
Lancaster, PA 17601
(717) 299 2536



— THE ORIGINATOR OF AGRICULTURE SWITCH GEAR —

MAXI-POWER GENERATORS



330 FONDERWHITE RD., LEBANON, PA 17042
LEONARD MARTIN CO. 717-274-1483
★ RADIO DISPATCHED TRUCKS ★ 24 HOUR SERVICE

ALSO AVAILABLE

- ★ SWITCH GEAR
- ★ RENTAL UNITS
- ★ USED UNITS

VISIT US AT THE 1980 PA FARM MACHINERY EXPO

Farm Show Building - FEBRUARY 28 thru MARCH 1

Lots 69-71 and 84-86

