

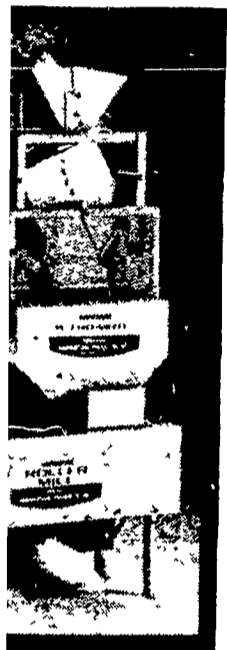
EQUIPMENT EXPO

February 28 - 29 & March 1

IN SYSTEMS

**COME VISIT OUR
1,000 sq. ft. DISPLAY!**

A-RO-MATIC ROLLER MILL

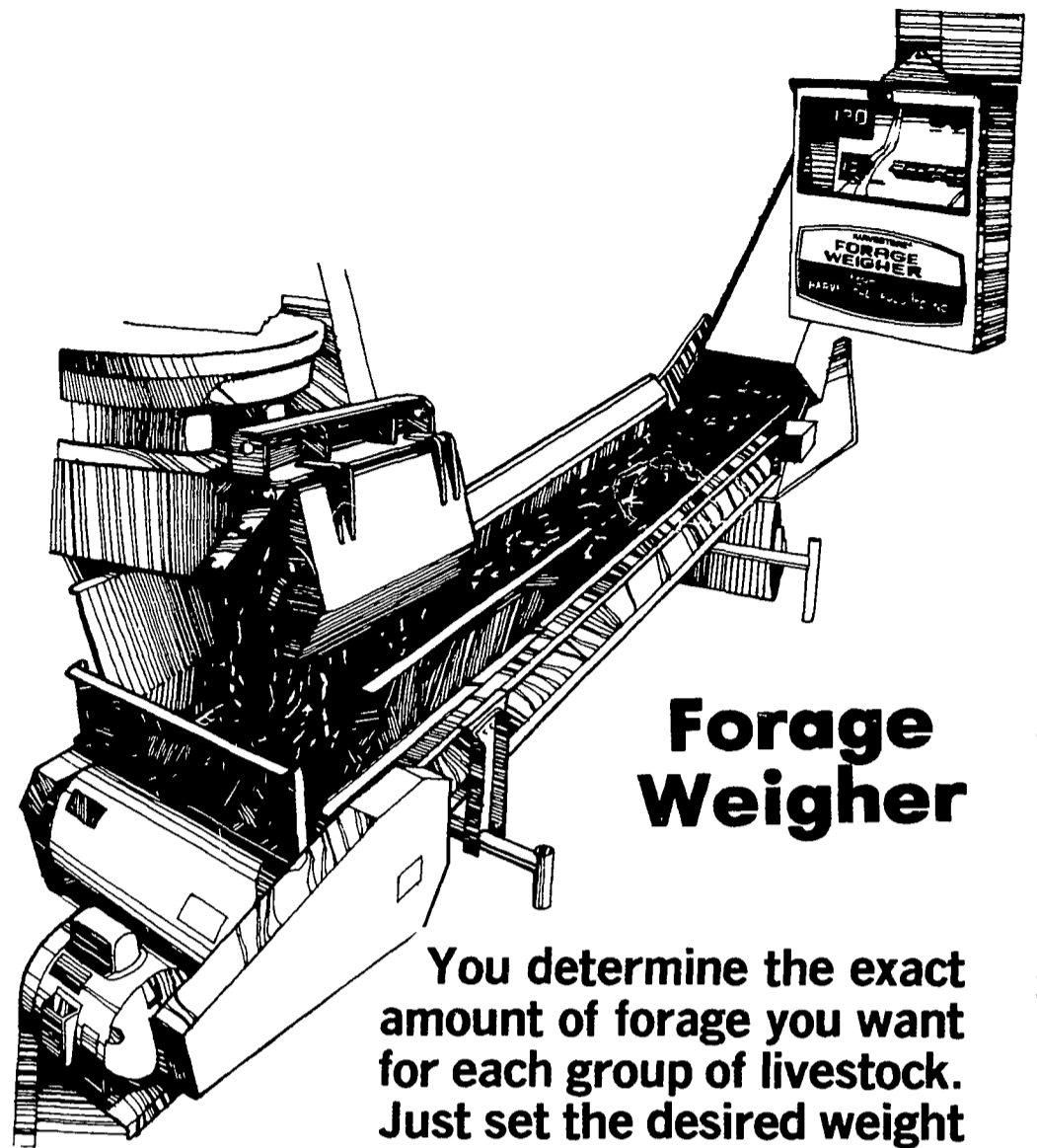


This grain processing system weighs, meters and rolls shelled corn. It's like having your own all-in-one feed mill.

MINERAL METER



40 pound hopper capacity. Force feed in your grain or forage ration as much mineral as you like.



Forage Weigher

You determine the exact amount of forage you want for each group of livestock. Just set the desired weight on the digital counter.

ATTENTION: TOTAL RATION FEEDERS

THIS PIECE OF EQUIPMENT WILL SHORTEN YOUR FEEDING TIME BECAUSE YOU CAN PUT TWO FORAGES INTO YOUR BATCH MIX AT THE SAME TIME.

1 - 76 - 1000

Systems, Inc.

Good of Penn-Jersey area.

SAMPLE

DOLLARS	CTS.
100	00

Your Local Dealer

1980

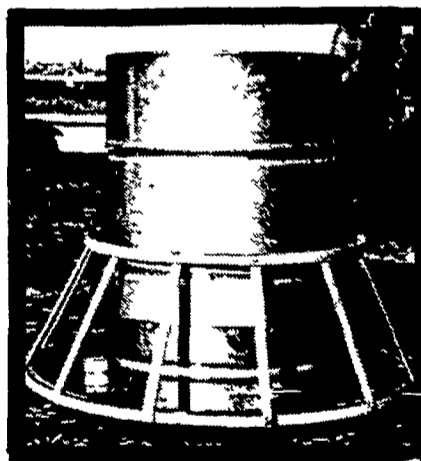
toward purchase of a Harvestore — one certificate per Harvestore

REMODELING PLANS WITH US.

100 Automation Certificate. NO CHARGE!!

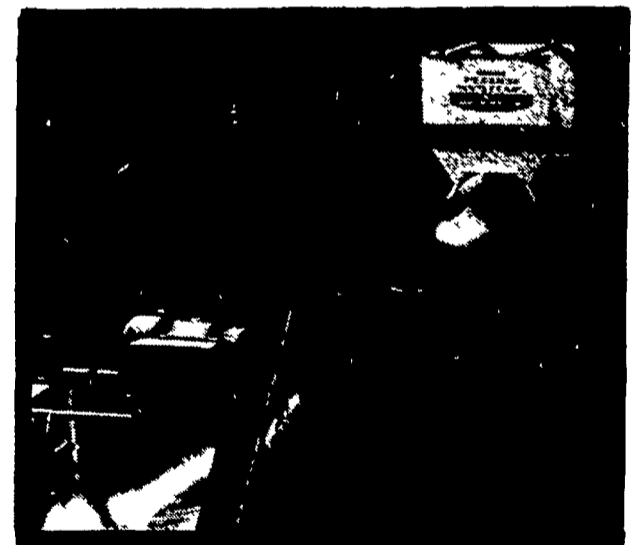
Harvestore® Systems consultant at Show for your certificate. One per farm family, please.

February 1, 1980, ON EQUIPMENT INSTALLED THIS YEAR



ROTARY HOG FEEDER

Six bushel capacity. Stainless steel drum, porcelain base and 12 animal openings.



BELT CONVEYOR

16-inch width, high volume feed delivery from storage to feeder with the push of a button. High strength, low friction and stretch, low power requirements.

KEYSTONE HARVESTORE® SYSTEMS, INC.

7, Route 322, New Holland, Pa. 17557
Phone (717) 354-4051



KEYSTONE HARVESTORE® SYSTEMS, INC.

99 Bridge Street, Tunkhannock, Pa. 18657
Phone (717) 836-5101