

FARM EQUIPMENT

NEW
AC-1 Petter 6 1/2 hp w/ starter and hand clutch sale price \$900
AC-2 Petter 12 hp, 3600 RPM w/ starter used a little \$1250

USED
AC-1 Petter 6 5 hp, 3600 RPM w/ starter \$450
(3) PH 1 Petters, 7 1/2 hp
PJ 2 Petter, 20 hp 1800 w/ starter
FIL 712 Deutz w/ starter & clutch
HOOVER DIESEL SERVICE
Sales & Service
Phone 717-656-6133

NEW EQUIPMENT

Just Received
Hesston 6550
Self-propelled
Windrower w/12' header, Perkins diesel engine, hydrostatic drive.

Hesston 1520 2000 gal. self loading Manure Spreader

DUTCH AUCTION ON NEW IDEA 272 7' CUT/DITIONER

Price will be reduced \$5.00 per da until sold

NEW EQUIPMENT

Ber Vac 8' 3 pt. Snow Blower up to 150 h.p. rating
Hesston 1090 pull type Windrowers
12', 13'4", 14' and 15'4" Brillion Packers in stock
Brillion GLP-64 3 pt. Landscape Seeder
Brillion 3 pt. 4R Spring Tine Cultivator
Brillion 10' Alfalfa Seeders
Brillion 12' 4" Pulvimulcher
Glenco Soil Finishers
Arps 7' & 8' 3 pt. Scraper Blades
Woodsman 3 pt. Cord Saw

SPECIAL DISCOUNTS

of up to \$3200. on New Idea Uni and Other Selected New Idea Products

USED EQUIPMENT

JD 5' Flail Chopper
NI Spreaders, repaired ready to go, new side chains, new paint, excellent condition, 214 - 3 btr. 206 bu.; 214 - sgl. btr. 206 bu.
Hawk Bilt 187 Tank Spreader
JD #46 Manure Loader
(2) 3 pt. hook-up 6' Scraper Blade
JD #237 2R Mtd. Corn Picker
Ford 3 pt. Hay Rake
Brillion 12' 4" Pulvimulcher
NH 469 Windrower
JD 480 Windrower
Mohawk 3 bar 3 pt. 9 tooth Chisel Plow
(1) (2) JD KBA 32 Blade Transport Disc
JD Heavy Duty 14' Transport Disc
NI 10' Fertilizer Spreader

UMBERGER'S MILL

New Idea, Gehl, Hesston & Brillion Dealers. RD4, Lebanon (Fontana)
Phone 717-867-5161 or 717-867-2613

FARM EQUIPMENT

FOR SALE
Steiger Bearcat I, 210 h.p., dual 20.8x34 tires, 3 pt. hitch, air cond., ex. cond., asking \$21,500.
13 shank No. 55 Int. chisel plow, \$1400.
4 row AC no-till corn planter, dry fertilizer, \$1850.
PH: 717-837-0107 or 717-837-3214

FARM EQUIPMENT

FOR SALE
HESSTON 10 STAKHAND 73 INT. 1/2 TON PICKUP
PAUL D. MAST
215-286-9510

FARM EQUIPMENT

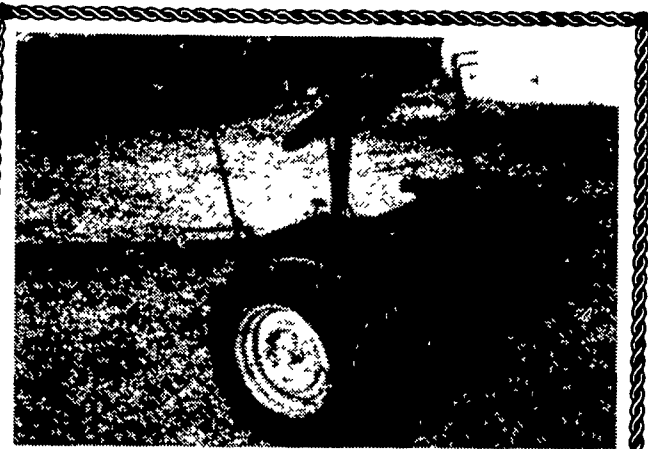
For Sale - JD 4-14" trailer plow with trip bottoms and new discs. 717-362-8568, \$650.

John Deere model N manure spreader, reconditioned, \$650, New Idea 214 manure spreader, reconditioned, \$1100. Call Bill Wheeler, personally; Biggs, Inc., Rising Sun, Md. 301-658-5531, Home 215-932-4416.

New Holland 1012 Bale Wagon, Ex. Cond.
New Idea 51' Elevator w/gas motor
Hesston 310 SP Mower Conditioner
2500 Gehl Skid Loader
WENTZ FARM SUPPLY
Palm, Pa.
215-679-7164

For Sale - White 2-70 Tractor, 300 hrs., -16.9x38 tires. Perfect condition. 717-683-5403 or 717-683-5639.

Int. 47 baler, motor and on steel in good condition to be sold at Strasburg Fire Co.



FOR SALE
AUTO. TURN CARTS
\$265.00 w/Brake
\$225.00 wo/Brake
\$10.00 each delivered within 25 miles. Please give directions. Good thru Feb. and Mar.
SAMUEL F. STOLTZUS
Christiana, R.D. #1, Box 199, PA 17509
at Bartville

NEW AND USED EQUIPMENT



J.D. 4430 Dual Hydraulic, 1600 hours, local tractor, real clean
5600 Ford, 225 hours, was a demonstrator
HD 315 Woods Batwing Mower, demonstrator
MF 3165 and loader
JD 2020 and loader
8N Ford 1740 Diesel Case Skid Steer Loader
1737 Case Skid Steer Loader
Melrose Bobcat
MF 235 with 700 hours
International 444
MH 44
3500 Ford and loader, motor rebuilt
J.D. 2010 Crawler
Cub with Woods Belly Mower, 4 yrs. old
AC D Grader
AC D10 and Cultivators
530 Case Backhoe
580 Case Backhoe
1200 David Brown
Farmall Cub & Snow Blade
Farmall A and Woods Belly Mower
NH 488 Haybine, cut 100 acres
Farmall 706
Farmall 400 D
Farmall Cub & Cultivator
600 Ford, real clean
International 3444 and loader
J.D. 2020
(2) MF 135, one with 3 cylinder Perkins
L210 Kubota
6 and 7 ft. Woods Scraper Blades

New Woods Mowers, all sizes and styles to choose from. Large inventory of tractors and parts. All kinds of plows, disks and miscellaneous equipment and tractors. If we don't have it - we can get it!

YORK COUNTY FARM & INDUSTRIAL EQUIPMENT

Box 222, Emigsville, PA 17318
717-764-6412 or 764-5115

USED EQUIPMENT

NH 24' elevator; NH 68 baler; NH 55 & 56 hay rake; IHC 100 trailer hitch mower; Oliver 12" 2 B pull type plows; Oliver & IHC 2 way plows; Nicholson hay tedder; NI 751 hay crusher; NH 404 hay crusher; Wisconsin engines, 2 cylinder & 4 cylinder w/clutch reduction; AC-B/power units w/clutch reduction.

Thomas J. Wheary & Son
717-687-6553

AUTHORIZED



PARTS and SERVICE

John Deere 800 SP Windrower, 6 cyl. water cooled engine, less cab \$2295.00
Front mounted 7' Snow Blower, like new condition, \$1995.00. Fits JD 3010, 3020, 4010 or 4020 tractors.
Paul Shover's Inc.
Loysville, PA
717-789-3117

USED TRACTORS

ALLIS CHALMERS 180 Diesel
FARMALL M
FARMALL 806 Diesel
FARMALL 856 Diesel
FORD 3000 Diesel w/loader
FORD 4000 8 sp. Diesel
FORD 5000 8 sp. Diesel
JOHN DEERE 4020 Diesel
MASSEY FERGUSON 135 Diesel

EQUIPMENT

INT. 4B 16" Auto. Reset Semi-Mtd. Plow

TRUCKS

1968 INT. Roll Back w/Henderson Body.
CLOSED SUNDAYS
NORMAN R. SHORES & SON
R.D. 5, Towanda, PA
717-765-9014

FARM EQUIPMENT

For Sale - Super 717 NH forage harvester, tungsten knives, good condition. NH 770W 5' open end grass head. NH 770N2 (2 row narrow) corn head. Heads are in excellent condition and can be bought with or without the chopper. 250 gal. Escro milk tank. 300 gal. Mojonner milk tank with 3 hp Brunner compressor. 717-597-2915.

For Sale - Meridian 3 gang sawmill edger, good condition, \$1200, Lumber 14' flatbed with bulk head and roller \$500, 201-852-0784 Morris Co., NJ.

For Sale - Two 500 gal. poly liq. fertilizer tanks. International 816 mower cond. 9 ft. Adams Co. 717-528-8374.

For Sale - Front end loader for John Deere 40, 420, 430, 440 crawler \$450. Suffolk Co. N.Y. 516-298-5291.

For Sale - 4010 JD gas. 215-383-6818.

For Sale - 1 David TK Truck mount mixer with scales, working condition, 1 Smith 14' cement cattle guard. 717-473-3516.

For Sale - Badger manure pump \$150; Model A AC combine with 12' grain head \$800; 2 row corn head \$250; 3 row narrow row corn head \$1000; 3 pt. hookup cultivator \$100; JD 214 baler \$300; Int. haybine \$150; 2000 gal. tank \$200; hitch kiker to drag tractor \$150; parts for Farmhand Chuck wagon; hydraulic loading chute \$50; 30' elevator \$150; 20' elevator \$100. 717-866-6844.

For Sale - Glencoe soil saver, 9 shank with leveler, used less than 1000 acres, must sell. 201-329-2765.

Wanted - Following parts for AC 600 planter, fertilizer auger drive sprockets, 6 center rib press wheels, various size drive sprockets for planting units, 2 small press wheels that mount behind double disc openers on planting units, Also harrow for 4x16 or 4x18 plow, hyd. unit for 77 Oliver. 302-492-3003.

JD 999 corn planter and fertilizer attachment ready to plant corn to be sold at Strasburg Fire Co.

For Sale - 1974 IHC 966 w/38" rear tires, 1100 original hours, like new condition. Lanc. Co. 717-284-2761.

FOR SALE

JD disc, model 230, 22' 9" wide, folds to 11'
JD cultivator, 4-row front mtd., fits 3020 & 4020 & newer models
JD weed sprayer w/110 gal. fiberglass tank, ready to use.
717-752-3825 or 717-759-3146



Used Case 1210 Tractor in perfect cond., fair rubber \$8,000.00
Case 1845 Uni Loader, Diesel, A1 condition with low hours
(3) Used Hesston Windrowers, ex. cond., 1 to 3 yrs. old, PT10's \$2500.00 each. A Good Deal To Early Buyers.

C. & P. FULTZ EQUIPMENT

RD 1 Spring Mills, PA
(814) 422-8807,
Ask for Paul

FARM EQUIPMENT

Galion model 303 grader \$3500.

DENNIS M. MILLER EQUIPMENT
Rt. 22 Grantville, PA
717-838-1888 anytime
717-469-0937 daily

For Sale - 20 ft. conveyors, 1 Patz, 1 Silomatic, 717-653-4923.

For Sale - 26" Boggs potato grader, picking table, rear elevator like new, \$1000. 215-395-1213 Lehigh Co.

For Sale - IH 4-row air planter, coul-till attachment, IH insecticide, post-depth, good condition. Union Co. 717-524-9745.

For Sale - 73 White Conv. tractor, 185" W.B., 13 spd. - 318 Detroit, new condition. 717-382-4625.

For Sale - Athens 7' 3 bar high clearance chisel plow with gauge wheels, used approx. 20 acres. \$950 717-626-6031.

For Sale - NI 7 ft. cutditcher with 2 sets of flails, 1 set never used, \$1750 717-687-9061.

Wanted - Due to a barn fire - 6-30" row JD 7000 planter, forage harvester with pickup & 2-row narrow corn head. Forage box, good used farm truck, 60' of harvester belt feeder. Ray Jacob 412-479-2722.

For Sale - B AC & side mower, good condition. Diesel motor Cummins, 6 cyl. & 10 sp. RR trans., good condition. 20' aluminum Morgan Van body with roll up door. 717-273-6018 after 5 P.M.

For Sale - Franam 7 shank pasture renovator, also seeder, fertilizer attachment & 3 pt. hitch. 40 hp. range, adaptable for horses, improves pasture & hay yields. Used only one day, can deliver. Write P.O. Box 366 L-84, c/o Lancaster Farming, Lititz, Pa. 17543.

For Sale - Parts from NH 905 windrower including new rubber crusher roll & rebuilt drive box. Also JD 800 windrower. 814-364-1349.

JD 310 wheel loader backhoe, new engine, \$13,000

DENNIS M. MILLER EQUIPMENT
Rt. 212 Grantville, Pa.
717-838-1888 anytime
717-469-0937 daily

For Sale - New Idea 708 power unit, 717 combine with 713 grain head with height control, 744-4 row wide corn head, hillside grain saver, 767 super chopper with 3 row wide-narrow corn head, windrow pickup, high moisture and 3/4 screen attachment for ground ear corn, 737 husking unit, all like new. Will separate. Franklin Co. 717-328-3429 8 to 9:30 P.M.

FOR SALE

IH 3200 hydrostatic skid loader
JD 350 crawler loader
Amco 14' disc
MF 1155 w/cab & air
MF 175
MF 1130
MF 760 combine, 6 row 30" corn head, 15' grain table
MF 321 corn head
Farmall 966
Farmall 656 hydro
IH 826
NI 506 loader
MELVIN M. BURKHOLDER
Ephrata, PA.
717-859-2960