

Farm museum program to feature antiques

LANCASTER — The 1980 Antiques Lecture Series will be held at 8 p.m. each Wednesday evening in March at the Pennsylvania Farm Museum of Landis Valley. This year's topics are furniture, porcelain, wood carvings, and pottery.

For the first lecture, March 8, Vernon Gunnion, Curator of Collections at the Pennsylvania Farm Museum, will discuss "Furniture of Southeastern Pennsylvania". Gunnion will focus on the walnut and cherry furniture of the later eighteenth and early nineteenth centuries.

The second lecture, "Chinese Export Porcelain for the American Market", will be delivered by Nancy Schiffer on March 12. Schiffer, an author and appraiser, was formerly Curator of Collections at Tryon Palace Restoration, New Bern, North Carolina.

The third lecture, to be held March 19, features Milton E. Flower speaking on "The Wood Carvings of Schummel and Mountz." Flower prepared a catalogue of Schummel and Mountz carvings in conjunction with an exhibition at The Abby Aldrich Rockefeller Museum

in Williamsburg, Virginia

The fourth lecture will be held March 26. Donald Winer, Curator of Fine Arts at the William Penn Museum, Harrisburg, will examine "Redware, Forms and Shapes". Winer, a potter, will use miniature examples of redware pottery to illustrate his lecture.

Each lecture will begin at 8:00 p.m. Admission is by ticket only; tickets are one dollar for each lecture or four dollars for the entire series. Tickets go on sale February 20 at the Farm Museum. For further information, please call the Farm Museum at 717/569-0401.

Montour Co. to hold storm water meeting

DANVILLE — Local residents will have their first opportunity for public input in implementation of Pennsylvania's Storm Water Management Act 167 on Tuesday, February 19.

That is the date set by the Montour County Conservation District for a public meeting to review and discuss designation of watersheds to be studied under the act.

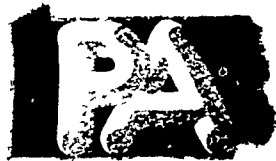
The meeting will be held at 7:30 p.m. at the district office in the First Ward School Building, corner of Pine and Mahoning Streets.

According to Walter Loncosky, district chairman, state officials have indicated studies should be completed on five watersheds within the county. One of these, Sechler's Run, was completed prior to passage of Act 167.

The public meeting will give local residents an opportunity to discuss additions to the basic plan as well as to suggest priorities of study. Local recommendations will be forwarded to the state for consideration.

Although it will take two years to implement Act 167, local people should participate in the early stages of the program if local wishes are to be incorporated in the work plan.

PENNSYLVANIA AGRICULTURE



WE'RE GROWING BETTER



THIS CALF HAS SCOURS... BUT DEHYDRATION WILL KILL IT!

Prompt, Effective Rehydration with



Could Save It!

SPECIAL OFFER . . . CALL NOW!

ZIMMERMAN'S ANIMAL HEALTH SUPPLY

Wood Corner Road, 3 miles West of Ephrata RD4, Lititz, PA 17543 717-733-4466

New Store Hours Mon. and Thurs. 7 A.M. to 8 P.M.
Tues. and Wed. 7 A.M. to 5 P.M.
Fri. 7 A.M. to 9 P.M.
Sat. 7 A.M. to 12 Noon

MARVIN J. HORST PRE-SPRING SALE ON PATZ EQUIPMENT

Ends February 28

Price Increase Coming March 1st

See or Call

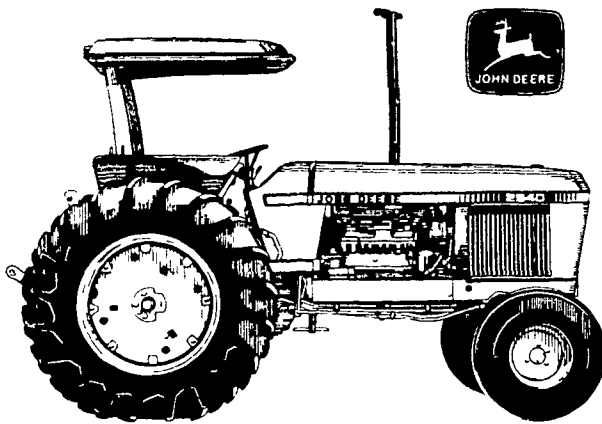
The Patz Man Today

MARVIN J. HORST

DAIRY EQUIPMENT

1950 S. 5th Avenue, Lebanon, Pa. 17042
Phone: 717-272-0871

NEW PROFILES OF PERFORMANCE



The new 80-hp 2940 — bigger engine, smoother shifting, easier riding, more pull power

Now 80 horsepower looks better than ever with the John Deere 2940. A beefed-up 6-cylinder engine, the new synchronized TSS transmission and Hi-Lo shift as standard equipment for 16 forward and 8 reverse speeds, larger fuel tank capacity, hydrostatic steering, new electronic instrument panel, and a new completely adjustable seat all add up to performance. And now you can stretch that 80-hp performance even further by equipping your 2940 with John Deere's new mechanical front-wheel-drive option. On-the-go engagement or disengagement is just one of many features that can help you keep going when you hit soft or wet conditions. The John Deere 2940 — it's real 80-hp performance.

LANDIS BROS. INC.
Lancaster, PA
717-291-1046

NEUHAUS'ES INC.
RD2, York, PA
I-83 Loganville Ext 3
717-428-1953 or
235-1306

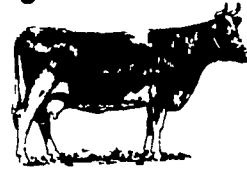
ADAMSTOWN EQUIPMENT INC.
Mohnton RD2, PA 19540
(near Adamstown)
215-484-4391

SHOTZBERGER'S EQUIPMENT
Elm, PA
717-665-2141

PIKEVILLE EQUIPMENT INC.
Oyster Dale Road
Oley RD2, PA
215 987-6277

A.B.C. GROFF INC.
New Holland, PA
717-354-4191

FRESH COWS EVERY WEDNESDAY IS DAIRY DAY SPRINGERS



AT NEW HOLLAND SALES STABLES, INC.
New Holland, PA

If you need 1 cow or a truck load, we have from 100 to 200 cows to sell every week at your price. Mostly fresh and close springing holsteins.

Cows from local farmers and our regular shippers including Marvin Eshleman, Glenn Fite, Kelly Boser, Bill Lang, Blaine Hoffer, Dale Hostetter, H.D. Matz, and Jerry Miller.

SALE STARTS - 12:00 SHARP

Also Every Wednesday,
Hay, Straw & Ear Corn Sale - 12:00 Noon
All Dairy & Heifers must be eligible for Pennsylvania Health Charts.

For arrangements for special sales or herd dispersals at our barn or on your farm, contact:

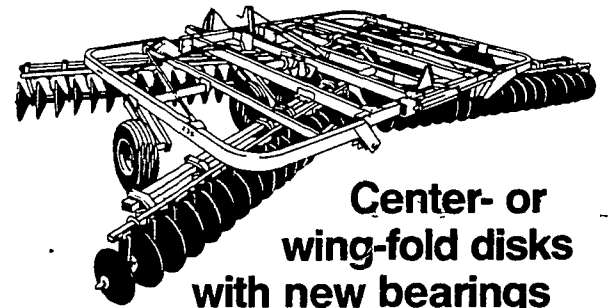
Abram Diffenbach, Mgr.
717-354-4341

OR
Norman Kolb
717-397-5538

HEIFERS

BULLS

New 235 Level-Action™ Disk

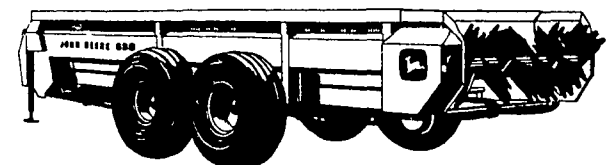


Center- or wing-fold disks with new bearings and new crank leveling

New Dura-Flex™ gang bearings feature 4-lip seals that keep grease in and dirt out. They are standard equipment — and backed by a simple 2-year warranty.

A new crank lets you fine-tune fore/aft leveling from the front of the disk. And you can set new combination scrapers for soil types from sandy to gumbo. Weight per blade is 100 to 125 pounds, sizes from approximately 17 to 25½ feet. Let us show you one of these simply tough hydraulic-fold disks.

400-bushel capacity



This John Deere 680 Spreader's 400-bushel capacity makes it the biggest spreader we have ever engineered. And most likely one of the largest you'll find anywhere. You'll like the hydraulic shift control and lifetime-warranted all-steel sides. You'll also appreciate the fully hinged shielding and tandem walking-beam wheels, too. Stop in to visit with us about the 680 Spreader.

ROBERT E. LITTLE INC.
Zieglerville, PA
215-287-9643

M.S. YEARSLEY & SONS
West Chester, PA
215-696-2990

KERMIT K. KISTLER INC.
Lynnport, PA
215-298-3270

AGWAY INC.
Chapman Equipment Center
Chapman, PA
215-398-2553

FOSTER EQUIPMENT SALES
Elmer, NJ
609-769-1535

I.G.'s AG SALES
Silverdale, PA 18962
215 257-5136