

Public Sales Register

Closing Date - Monday, 5:00 P.M.
of each week's publication

MON MARCH 3 - 11 00 A M
Public Sale of Complete Line of Top Farm Machinery Located in Baltimore Co, MD on MD Rt 439, exit 36 off Interstate 83 Sale by Mr & Mrs Joseph R Berg Berg's Dairy Farm, White Hall, MD 301-343-0722 Aberdeen Sales Co Auctioneers & Sales Managers

TUES MARCH 4 - 1 P M
Yorkshire Sale of Bred Gilts, Open Gilts & Boars Located at the Lebanon Area Fairgrounds, Lebanon, Pa Houvare Farm Production Sale For information call or write Elwood E Houser, Rt 5, Box 70, Lebanon, Pa 717-272-5798 or 273-2921

TUES MAR 4 - 10 00 A M
Public Sale of Farm Machinery Located in Mifflin Co, 2 1/2 miles west of Reedsville, PA on Rt 655 Curtis O Yoder Owner Mark Glick Auctioneer

WED MAR 5 - 9 A M Consignment Sale by David H Good located 1/2 mile North of Route 23 on North Maple Ave in Leola, Lancaster Co, Pa Watch for sale signs F Snyder, R Martin, C Wolgemuth, J Fry and L Horst Auctioneer

WED MAR 5 - Public Sale of Farm Machinery for Richard L Lehman, Rd 2, Newville, Cumberland Co, PA Art Rife Auctioneer

WED MAR 5 10 00 A M
Public Sale of Farm & Irrigation Equipment Sale for Joseph Hetzler, Cohnsey-Halfway House Rd (Rt 540), Cohansey, NJ (Use Rt 322 to Rt 77 to Deerfield, Thence Rt 540 to sale site) Sickler & Scott Auctioneers

WED MAR 5 - Public Sale for Central Pennsylvania Equipment Dealers, RD1 Box 524A, Mill Hall, PA 17751 PH 717-726-3115

THURS MARCH 6 - 9 A M
Farm Equipment, Household Goods & Lumber Located along Rt 241 1/2 mile South of Lebanon Sale by Mrs Elmer B Zimmerman Nevin Z Martin & Lewis B Groff Auctioneers

THURS MAR 6 - 9 30 A M
Public Sale of Horses, Cattle, Machinery and some Household items Located in Centre Co, turn south off Rt 45 about 1 mile East of Aaronsburg, PA on 1st hard road, travel 1 mile turn left Eli B & Franie Zook Rd, Woodward, PA Owners Mark Glick, Reedsville, PA Auctioneer

THURS MAR 6 - Public Sale of Dairy Heifers and Farm Equipment Held in Marion Twp, Berks Co, PA 2 miles north of Womelsdorf, 1/2 mile east of Rt 419, Mary Darkes Owner Earl S Buffenmeyer Auctioneer

THURS MAR 6 - Melvin Hertzler Farm Equipment Dispersal near Mechanicsburg, PA Ralph W. Horst Auctioneer

THURS MAR 6 - Monthly Cow Sale at the Melvin Kolb, Inc Sales Barn, 2220 Dairy Road, Lancaster, Pa 17601 Dennis Kolb, Sales Manager, Robert Mullendore, Auctioneer

THURS MAR 6 - Public Sale of Full line of Farm Machinery, Located 3 miles southeast of Mifflintown, 1/2 mile east of Port Royal Interchange Wilbur Graybill Owner Long Brothers Auctioneers

THURS MAR 6 - 11 00 A M
Public Sale of Farm Equip-

ment, Trucks and Trailer, Crawler and Backhoe Held 1/4 mile south of US Rt 663 along Geryville Pike, between Pennsylvania and Quakertown, Montgomery Co, PA Harold L Moyer Owner Ralph W Zetlemoyer Auction Co

FRI MAR 7 - 11 00 A M
Horse Sale Held at New Holland Sales Stables, New Holland, PA

FRI MAR 7 - 9 30 A M
Machinery Sale - Annual Spring Sale - Consignments of all kind of machinery, Belleville Livestock Market, Belleville, Pa Mark Glick Auctioneer

FRI MAR 7 - Carl H Martin Farm Equipment Dispersal Located 1 mile east of Marion, PA along Rt 914, Ralph W Horst Auctioneer

FRI MAR 7 - 10 30 A M
Public Sale of Valuable Late Model Farm Machinery, Tools and Pickup Truck, Located along Duke St Ext (Adamsville Rd) in the Boro of Dallastown, York, Co, PA C Alfred Taylor Owner Robert L Sechrist Auctioneer

THURS MAR 7 & 8 - 9 30 A M
Public Sale of Farm Equipment, Vehicle and Tools Held at the Frederick Fairgrounds, Frederick, MD Trout Auctioneers, Inc

FRI MAR 7 - 1 30 P M
Public Sale of Harvestore Located along Rt 372, 3 miles west of the Buck, 14 miles south of Lancaster, PA Terms by Jacob Groff, Everett Kreider and Steve Petersheim Auctioneers

FRI MAR 7 - 1 00 P M
Public Sale of Restaurant & Equipment Meadow Hills Dining House, Rt 324, (New Danville Pk) 1 mile south of Lancaster, PA Louis Traiman Auction Co

SAT MAR 8 - 8 30 A M
12th Annual Spring Sale Held at the Gordonville Fire Co, Gordonville, PA Selling Household Goods, Antiques, Farm Equipment, Building Supplies, Livestock Donated items accepted Local Auctioneers

LARGE 2 DAY PUBLIC SALE

OF FARM EQUIPMENT, CARS, TRUCKS, MEAT EQUIPMENT, LANDSCAPING EQUIPMENT, OFFICE EQUIPMENT, NURSERY STOCK INVENTORY SATURDAY, FEBRUARY 16 & 23

Sat., February 16

Starting at 9:00 a.m.
Small items sold first

Location - Take Rt. 34 north from Carlisle to junction 850 (Handy Market), turn left 3 miles to Davis Nursery Center, Carroll Twp., Perry Co., PA. Watch for sale signs.

MEAT STORE EQUIPMENT

(2) Penn K D walk-in coolers; Tyler meat display case BUV8TP, 20 ft., model 78-70; Tyler Island Produce case 16 ft. with dry display end model 411031; Universal cabinet freezer; (2) cutting tables (8'x30"); Hobart tenderizer; Hobart meat saw table; Hobart meat grinder; Hobart food processor; stainless steel sink & miscellaneous items including pans, hooks, trays, paper.

GREENHOUSE & EQUIPMENT

(2) 100 ft. Superlift aluminum truss poly houses; (4) Modina gas unit heaters; (6) 3 ft. exhaust fans & shutters; (2) Powermatic oil fired unit heaters; plant tables; soil mixer (model SM-1Y-3 10 ft. conveyor); seed germination unit, fertilizer injector; airrafter; fertilizer spreaders; 2" irrigation pipe; nursery plant pots, 1, 2, & 3 gal.; burlap; vermeer baskets; post hole digger; roto hoe soil shredder; portable Salamander heater; misc. pots, and flats.

LAWN & GARDEN SUPPLIES

Scotts fertilizer including Lawn Pro products; Prolawn fertilizer products; Ortho products; Sterns products; garden seeds; misc. clay and baskets & pots.

NURSERY STOCK INVENTORY

30 acres of evergreens, shade trees, flowering trees and shrubs.

Sat., February 23

Starting at 10:00 a.m.
Small items sold first

Location - 2 miles west of Elizabethtown off Rt. 230 on Hoffa Rd., Lancaster Co., PA. Watch for Davis Turf, Inc. Landscaping Garden Center.

TRUCKS

1976 Chev. pickup; 1968 Int. stake body with hyd. lift tailgate; 1979 Dodge Coachman van; 1964 Ford flat truck dump; 1964 Int. Van body; 1970 Int. flat dump truck, 1969 Int. stake body; 1963 Int. flat dump; 1978 Ford Flat dump; 1979 Chev. pickup; 1965 Int. pickup; 1978 Ford crew cab pickup; 1974 Int. van body; 1966 Chev. tank truck; 1964 GMC flat bed; 1974 Ford dump; 1967 Ford dump; 1961 Int. dump; 1970 Int. flat dump; 1956 Mack asphalt dist.; 1970 Chev. van; 1962 Diamond T tractor truck, cummins diesel; 1974 Mack tractor truck with sleeper, very low milage; 1963 Mack with spreader body; 1971 Int. flat dump; 1967 Int. flat dump; 1963 Mack truck tractor; 1967 Int. roll back equipment body, 1970 Int. crew cab pickup; 1970 Chevy van; 1971 Int. truck with 1500 gal. hydro seeder; 1968 Ford van, 1963 Mack truck tractor.

TRAILERS

1957 Trailmobile tanker, as is; Smithco trailer; 1966 Freuhauf drop deck; 1941 Trailmobile cattle trailer; 1959 Freuhauf bulk tankers, (2) Freuhauf van, Kentucky flat with side-o-matic; 2 axle tag-along; 3 axle tag-along; 1971 Trailco flat; 1968 Troyer flat; 1973 movall trailer; Freuhauf dump trailer.

CARS

1979 Cadillac, 1971 Cadillac; 1975 Cadillac; 1976 Chev. El Comaino; 1976 Int. Scout.

FARM TRACTORS

1967 1850 Oliver 4 WD; 1974 Ford tractor with Brower sod harvester; NH loader; Int. B414; 6000 Ford; 3600 Ford; 1957 Ford; 8000 Kubota; model 850 Case crawler; Ford 3000; 1968 Int. backhoe; 1850 Oliver; Int. dozer; 1255 Oliver with backhoe and loader; Int. with loader; Vermeer tree digger; Davis Trencher; 1973 140 Int. diesel; 1973 Int. fork lift; 1973 Ford tractor with loader; Farmall C tractor; 1974 Ford 4000 diesel; 1974 Ford 4000 diesel; Tree digger-loader.

FARM EQUIPMENT

1000 gal. hydroseeder (junk); 1500 gal. hydroseeder (on #36); (2) Finmulchers; Rinco mulcher; power roller; walker power; tamper power, mixer, box; above ground Trogan pool; AC combine with corn and grain heads; Owatonna hay bunder; NH baler; NH hay rake; hay elevator; 2 hay wagons; Gehl harvester with corn and grass heads; corn silage heads; 3 silage wagons, 1 Badger, 2 Gehl; AC no-till corn planter; 350 bu. corn dryer with gas tank; grain elevator, NH blower; Hammermill; grain drill John Blue sprayer; (2) Lely fertilizer spreaders; 3 pt. Jackson seeder; poly layer; 5 bottom Oliver plow; 3 bottom plow; chisel plow; (2) Athens disc; Oliver disc; 3 Brillion mulchers; 12' Brillion; tack trailer; 1000 gal. water tank; Lely rotterra; 2 Howard hand tillers; 3 pt. Howard tiller; New hand tiller; post hole digger, 3 pt., (2) hyd. post hole diggers; Vermeer tree spade with case; (3) Olson boxes; (2) 10' Brillion seeders; 8' Brillion seeder, 3 pt.; (2) Anderson pickers; sickle bar mower; 5 ft. rotary mower; 5 ft. rotary mower, 3 pt.; rotary for 140; rotary for Kubota; tiller Kubota; Ford irrigation pump; 2", 4" & 6" irrigation pipe; manure spreader; portable welder, portable welder & generator; Hyd. floor jack; misc. shop supplies, pressure washer.

TURF & NURSERY STOCK

50 acres turf, 20 acres of nursery stock.

OFFICE EQUIPMENT

6 desks; 8 files; check writer, (2) Olympia electric typewriters; 4 adding machines; 1 file case; copy machine; (2) tables; steam jenny.

Terms: Cash or approved check sale day.
For inspection call owner.

Sale by:

DAVIS TURF, INC.

For information call
717-944-1436

Auctioneer:
Nelson C. Weidenbaugh
540 N. Lewis Rd.
Royersford, PA 19468
215-948-7619

Lunch Available

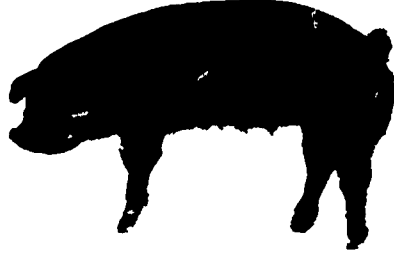
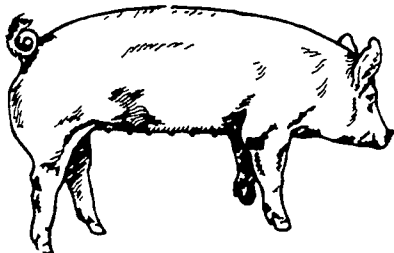
Lawrence, Leon and Thomas Arnold 13th PRODUCTION

SALE

Yorkshires

OF

Durocs



Auctioneer - Harry Bachman, Annville, PA

- 50 Bred Gilts
- 30 Yorkshire bred Yorkshire
- 20 Duroc bred Duroc
- 60 Commercial Yorkshire bred Yorkshire
- All bred gilts are hand mated. Pick due dates to fill your farrowing schedule.
- 50 Open Gilts (Ready to breed)
- 25 Registered Yorkshire or Duroc
- 25 Commercial Yorkshire or cross bred
- 40 Boars
- 25 Yorkshire
- 15 Duroc
- 7 - 8 months old, ready for heavy service

Friday Afternoon
February 22, 1980 1:00 P.M.
SALE TO BE HELD AT THE
Lebanon Area Fairgrounds
(CORNWALL & EVERGREEN ROADS, 1 1/2 MILES SOUTH OF)
Lebanon, Pa.

FOR CATALOGUE WRITE TO
LEON L. ARNOLD, R.D. 7, BOX 705, LEBANON, PA. 17042
OR CALL 717-273-5880