

State timber sales total \$3.6 million

Lancaster Farming, Saturday, February 16, 1980—D15

HARRISBURG — Secretary of Environmental Resources Clifford L. Jones said today timber sales from state forests in 1979 reached a record high and contributed \$3,647,039 to the state's General Fund.

"This increase in timber sales during the past year represents the proper management of one of Pennsylvania's most valuable, and renewable, natural resources which not only benefits the wood using industries but also the

taxpayers of the Commonwealth," Jones said.

He said 102 contracts were issued in 1979 having a net volume of 39,234,000 board feet of sawtimber and 7,646,000 cubic feet of pulpwood.

The total value of these contract sales, timber permit sales and firewood was \$3,647,039, he said.

"This represents not only a sizeable increase in the number of contact sales over 1978 but also an increase of over 75 percent in the value

of sawtimber and pulpwood harvested," Jones said.

"During 1978 there were 69 contracts issued for a volume of 22,957,000 board feet of sawtimber and 4,201,900 cubic feet of pulpwood valued at \$1,916,773."

"There were 109 contracts in 1976 but the volume of sawtimber and pulpwood sold, and the monetary value of both, were considerably lower."

Jones credited the 1979 achievement to increased

timber production on the nearly two million acres of forest land managed by the Department of Environmental Resources.

"For the last several years, there has been a general improvement in the market for wood products and the majority of our wood using industries have had to depend largely on the publicly owned state forests as their major source of supply," Jones said.

"A forest is one of our few renewable natural resources

but it must be managed properly if it is to yield a continuous flow of products, services."

Jones said proper management is the responsibility of the department's Bureau of Forestry.

"The benefits from this combination of proper management and harvesting are two-fold," Jones said.

"First, it improves the habitat for wildlife; and second, it contributes to the forest industries' demand for raw timber products

which are converted into more than 600 items needed for every day use.

"If we are to maintain this level of production our state forests cannot be allowed to remain idle. They must be managed and harvested with an eye to the future," he said.

It is estimated that there are over four million former FFA members. Nearly 16,000 are members of the National FFA Alumni Association.

SAVE \$\$\$

Ask Us For Repowering

REPOWER

WITH VM DIESEL

Harvesters, Haybines, Tractors, Cornpickers, Balers, Hydraulic Systems, Corn Binders, Choppers

SAVE \$\$\$

Ask Us For Repowering



Diesel

1050 SU SERIES



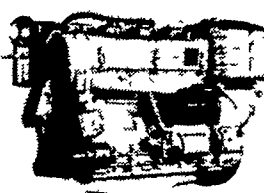
2800 R.P.M.
22 SAE HP
20 DIN HP



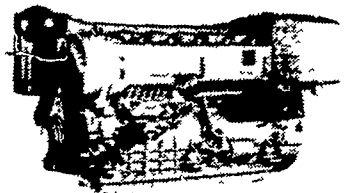
2800 R.P.M.
44 SAE HP
40 DIN HP



2800 R.P.M.
66 SAE HP
60 DIN HP



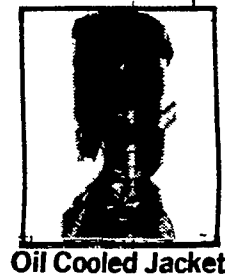
2800 R.P.M.
88 SAE HP
80 DIN HP



2800 R.P.M.
132 SAE HP
120 DIN HP

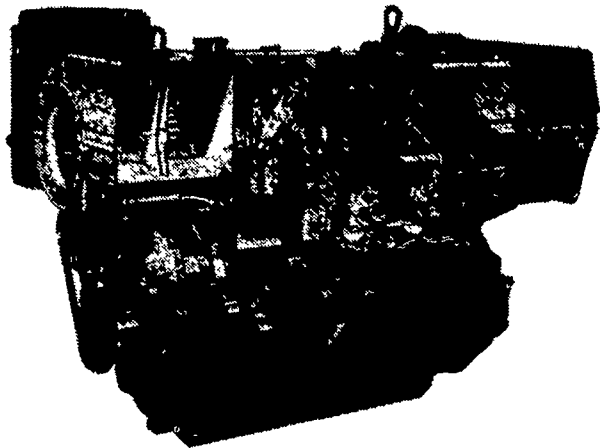
THE NEW AND REVOLUTIONARY FAMILY OF ENGINES

All New HR Series

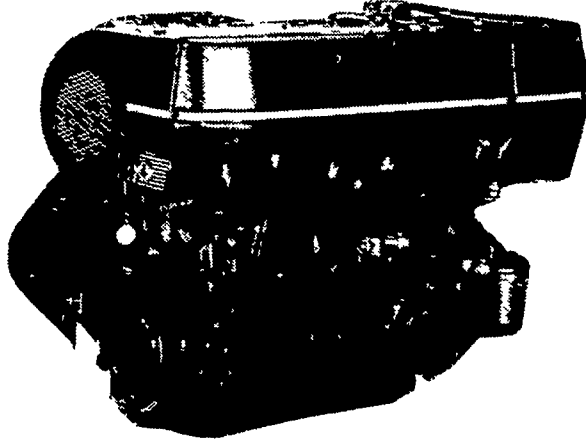


Oil Cooled Jacket

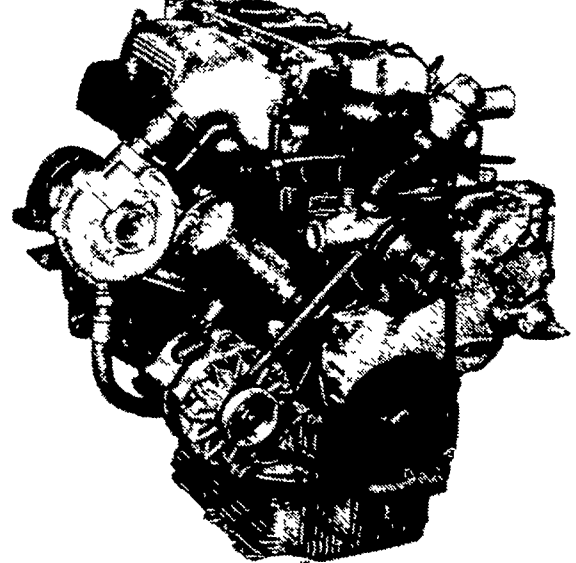
OIL COOLED



AIR COOLED



WATER COOLED



General Features:

- Integrally cast cylinders with inserted and removable wet type cylinder liners
- Light hypereutectic alloy pistons
- Extra-resistant steel connecting rods alloyed with special alloy head bearings
- Surface hardened steel crankshaft
- Drop-forged, casehardened and tempered steel camshaft
- Anti-friction cast-iron tappets alloyed
- Cast-iron tunnel type crankcase
- Rotary injection pump with mechanical governor

- Force-feed lubrication with built-in circuit and lobe type pump
 - Diaphragm pump feed
 - Oil and fuel filters with integral type element.
- Special structure and patented engine with consequent increases in performance and easier operation with low weight/output ratio low smoke emissions.
- Engine based on a design "modulus" formula which allows a maximum parts standardization and interchangeability.

Ask For Horsepower Ranges Of Above
THE "RIGHT FROM THE START" DIESEL ENGINE LINE
FOR FAULTLESS PERFORMANCE

USED DIESELS

- (4) SR 2 Lister
- F6L - 912 Deutz
- 100 hp. Lister
- Cylinder Deutz
- SR 3 Lister
- DVA 2220 Sianzi
- P J2-Petter

QUEEN ROAD REFRIGERATION

Box 67, Intercourse, PA 17534
Phone: John D. Weaver - 717-768-9006 or 768-7111
or Answering Service - 717-354-4374

24 HOUR SERVICE