

## Public Sales Register

Closing Date - Monday, 5:00 P.M.  
of each week's publication

SAT. MAR. 22 - 9:30 A.M. Public Sale of Valuable Farm Machinery, Tobacco Equipment, Household Goods Located Rd 4, Lebanon, South Annville Twp., Lebanon Co., PA Take Rt 322 west of 72 to Fontana and turn south on the farm lane at west side of Umberger's Mill to first farm on right. Conditions by Mr & Mrs. Ralph R Moyer, Harry Bachman and Earl Buf-fenmeyer Auctioneers

MON, MAR 24 - M M Weaver & Sons, Inc Annual Public Auction of New and Used Farm Equipment located on North Groffdale Road, Leola, Pa John E and Paul E Martin, Auctioneer

MON MARCH 24 - 12 30 P M - Second International Red & White Heifer Sale and Herr-vale's Milking Herd Dispersal, Guernsey Sales Pavilion, Rt 30, Lancaster Sale Manager, Red & White Dairy Cattle Association

TUES MAR 25 - Farm Equip-ment Auction Sale for Paul & Mary Gsell Located 9 miles south of Chambersburg, PA Ralph W Horst Auctioneer

WED MAR 26 - 3 00 P M Easter Lamb & Goat Sale Held at the Belleville Livestock Market, Belleville, PA

WED MARCH 26 - 9.30 A M Sharp Annual Public Sale of Complete Assortment of Tractors and All Types of Farm Equipment by Geo V Seiple and Son, Easton, Pa Consign your surplus machinery

THURS MAR 27 - 10 00 A M Public Sale of Farm Equip-ment, Tractors, Trucks,

Trailer, Antique Tractors and Cattle, located 1/2 mile east of Mifflintown, PA along old Rt 22 at D E Smith Farm Robert J Campbell Owner Long Brothers Auctioneers

THURS MARCH 27 - Public Sale of Livestock, Farm Equip-ment, Grain & Hay Located 1/4 mile North of Bethel along Rt 501, Bethel Twp, Berks Co, Pa. Sale by Clarence H Klahr Auctioneers Bixler & Kramer

FRI, MAR 28 - 5:00 P M Household Goods & Antiques at the 17th Annual Spring Sale, Kempton Community Center, Kempton, PA

FRI MAR 28 - 10 00 A M Public Sale of Full Line of Good Modern Farm Machinery Located in Mifflin Co., 3 miles west of Reedsville, PA on Rt 655 Kore E Kauffman Owner Mark Glick Auctioneer

SAT MARCH 29 - 11 A M Con-signment Horse Sale at the Keister's Middleburg Auction Sales, Inc, Rt 522, 3 miles East of Middleburg, 5 miles West of Selinsgrove, Pa Dorri & Walt Keister, Owners Larry Long Auctioneer

SAT MAR 29 - 1 00 P M Public Sale of Bred Gilts, Open Gilts & Boars, Sale held by Calvin H Lazarus & Sons (Duroc, Yorkshire & Spotted) at our farm in Whitehall, PA, with guest consignor Terry Bennecoff & Son (Hampshire & Berkshire), Harlan Wessner & Family (Landrace) For Catalog - Calvin Lazarus, 4290 Bridge St, Whitehall, PA 18052 215-799-3375

SAT MAR 29 - 10 00 A M Household Goods, Antiques, Lawn & Garden Equipment at the 17th Annual Spring Sale,

Kempton Community Center, Kempton, PA

SAT MAR 29 Public Sale of Farm Machinery and Tools Located near Washington Boro Sale for Yakubowski & Barley Bros Kreider & Peter-sheim Auctioneers

SAT MAR 29 - 9 30 A M Public Sale of Farm Equip-ment. Held at the G & M Livestock Market, Inc Rt 220, Southwest of Hollidaysburg, near Duncansville John J Dill-ing Auctioneer

SAT MAR 29 - 12 00 P M Public Sale of 70 Head Holste-ins including 42 cows and 28 heifers Louis Byler Owner Mark Glick Auctioneer

MARCH 31 9 30 A M Con-signment Sale. Located at S Race St, Myerstown, Pa 17067 Sale held by Wengers Farm Machinery, Inc

### APRIL

WED APRIL 2 - 9 A M Con-signment Sale by David H Good located 1/2 mile North of Route 23 on North Maple Ave in Leola, Lancaster Co., Pa Watch for sale signs F Snyder, R Martin, C Wolgemuth, J Fry and L Horst, Auctioneer

THURS APRIL 3 - Monthly Cow Sale at the Melvin Kolb, Inc Sales Barn, 2220 Dairy Road, Lancaster, Pa 17601 Dennis Kolb, Sales Manager, Robert Mullendore, Auctioneer

FRI APR 4 - 10 30 A M Public Sale of Tractors Located 1/4 miles west of New Bloomfield, PA, Perry Co R E Copenhaver & Son

SAT APR 5 - Wakefield Lions Club Public Sale at Powles Feed Mill near Wakefield, PA Kreider & Petersheim Auc-tioneers

SAT APR 5 9 30 A M Inven-tory Reduction Sale of Farm Tractors, Machinery, Industrial Tractors and Machinery Mar-shall Machinery Inc, Rd 4 Rt 652, 5 miles east of Honesdale, PA 717-729 7117

## LARGE 2 DAY PUBLIC SALE OF FARM EQUIPMENT, CARS, TRUCKS, MEAT EQUIPMENT, LANDSCAPING EQUIPMENT, OFFICE EQUIPMENT, NURSERY STOCK INVENTORY SATURDAY, FEBRUARY 16 & 23

Sat., February 16

Starting at 9:00 a.m.  
Small items sold first

Location - Take Rt. 34 north from Carlisle to junction 850 (Handy Market), turn left 3 miles to Davis Nursery Center, Carroll Twp., Perry Co., PA. Watch for sale signs.

### MEAT STORE EQUIPMENT

(2) Penn K D walk-in coolers; Tyler meat display case BUV8TP, 20 ft., model 78-70; Tyler Island Produce case 16 ft. with dry display end model 411031; Universal cabinet freezer; (2) cutting tables (8'x30"); Hobart tenderizer; Hobart meat saw-table; Hobart meat grinder; Hobart food processor; stainless steel sink & miscellaneous items including pans, hooks, trays, paper.

### GREENHOUSE & EQUIPMENT

(2) 100 ft. Superlift aluminum truss poly houses; (4) Modina gas unit heaters; (6) 3 ft. exhaust fans & shutters; (2) Powermatic oil fired unit heaters; plant tables; soil mixer (model SM-1Y-3 10 ft. conveyor); seed germination unit, fertilizer injector; arafier; fertilizer spreaders; 2" irrigation pipe; nursery plant pots, 1, 2, & 3 gal.; burlap; vermeer baskets; post hole digger; roto hoe soil shredder; portable Salamander heater; misc. pots, and flats.

### LAWN & GARDEN SUPPLIES

Scotts fertilizer including Lawn Pro products; Prolawn fertilizer products; Ortho products; Sterns products; garden seeds; misc. clay and baskets & pots.

### NURSERY STOCK INVENTORY

30 acres of evergreens, shade trees, flowering trees and shrubs.

Sat., February 23

Starting at 10:00 a.m.  
Small items sold first

Location - 2 miles west of Elizabethtown off Rt. 230 on Hoffa Rd., Lan-caster Co., PA. Watch for Davis Turf, Inc. Landscaping Garden Center.

### TRUCKS

1976 Chev. pickup; 1968 Int. stake body with hyd. lift tailgate; 1979 Dodge Coachman van; 1964 Ford flat truck dump; 1964 Int. Van body; 1970 Int. flat dump truck, 1969 Int. stake body; 1963 Int. flat dump; 1978 Ford Flat dump; 1979 Chev. pickup; 1965 Int. pickup; 1978 Ford crew cab pickup; 1974 Int. van body; 1966 Chev. tank truck; 1964 GMC flat bed; 1974 Ford dump; 1967 Ford dump; 1961 Int. dump; 1970 Int. flat dump; 1956 Mack asphalt dist.; 1970 Chev. van; 1962 Diamond T tractor truck, cummins diesel; 1974 Mack tractor truck with sleeper, very low mileage; 1963 Mack with spreader body; 1971 Int. flat dump; 1967 Int. flat dump; 1963 Mack truck tractor; 1967 Int. roll back equipment body, 1970 Int. crew cab pickup; 1970 Chevy van; 1971 Int. truck with 1500 gal. hydro seeder; 1968 Ford van; 1963 Mack truck tractor.

### TRAILERS

1957 Trailmobile tanker, as is; Smthco trailer; 1966 Freuhauf drop deck; 1941 Trailmobile cattle trailer; 1959 Freuhauf bulk tankers, (2) Freuhauf van, Kentucky flat with side-o-matic; 2 axle tag-along; 3 axle tag-along; 1971 Trailco flat; 1968 Troyer flat; 1973 movall trailer; Freuhauf dump trailer.

### CARS

1979 Cadillac; 1971 Cadillac; 1975 Cadillac; 1976 Chev. El Comaino; 1976 Int. Scout.

### FARM TRACTORS

1967 1850 Oliver 4 WD; 1974 Ford tractor with Brower sod harvester; NH loader; Int. B414; 6000 Ford; 3600 Ford; 1957 Ford; 8000 Kubota; model 850 Case crawler; Ford 3000; 1968 Int. backhoe; 1850 Oliver; Int. dozer; 1255 Oliver with backhoe and loader; Int. with loader; Vermeer tree digger; Davis Trencher; 1973 140 Int. diesel; 1973 Int. fork lift; 1973 Ford tractor with loader; Farmall C tractor; 1974 Ford 4000 diesel; 1974 Ford 4000 diesel; Tree digger-loader.

### FARM EQUIPMENT

1000 gal. hydroseeder (junk); 1500 gal. hydroseeder (on #36); (2) Finmulchers; Rinco mulcher; power roller; walker power; tamper power, mixer, box; above ground Trogan pool; AC combine with corn and grain heads; Owatonna hay binder; NH baler; NH hay rake; hay elevator; 2 hay wagons; Gehl harvester with corn and grass heads; corn silage heads; 3 silage wagons, 1 Badger, 2 Gehl; AC no-till corn planter; 350 bu. corn dryer with gas tank; grain elevator, NH blower; Hammermill; gram drill John Blue sprayer; (2) Lely fertilizer spreaders; 3 pt. Jackson seeder; polly layer; 5 bottom Oliver plow; 3 bottom plow; chisel plow; (2) Athens disc; Oliver disc; 3 Brillion mulchers; 12' Brillion; tack trailer; 1000 gal. water tank; Lely roterra; 2 Howard hand tillers; 3 pt. Howard tiller; New hand tiller; post hole digger, 3 pt., (2) hyd. post hole diggers; Vermeer tree spade with case; (3) Olson boxes; (2) 10' Brillion seeders; 8' Brillion seeder, 3 pt.; (2) Anderson pickers; sickle bar mower; 5 ft. rotary mower; 5 ft. rotary mower, 3 pt.; rotary for 140; rotary for Kubota; tiller Kubota; Ford irrigation pump; 2", 4" & 6" irrigation pipe; manure spreader; portable welder, portable welder & generator; Hyd. floor jack; misc. shop supplies, pressure washer.

### TURF & NURSERY STOCK

50 acres turf, 20 acres of nursery stock.

### OFFICE EQUIPMENT

6 desks; 8 files; check writer; (2) Olympia electric typewriters; 4 adding machines; 1 file case; copy machine; (2) tables; steam jenny.

Terms: Cash or approved check sale day.  
For inspection call owner.

Sale by:

**DAVIS TURF, INC.**

For information call  
717-944-1436

Auctioneer:  
Nelson C. Weidenbaugh  
540 N. Lewis Rd.  
Royersford, PA 19468  
215-948-7619

Lunch Available

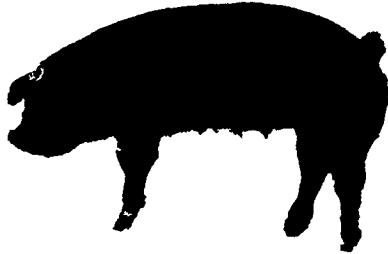
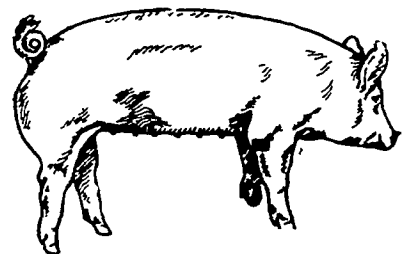
## Lawrence, Leon and Thomas Arnold 13th PRODUCTION

# SALE

Yorkshires

OF

Durocs



Auctioneer - Harry Bachman, Annville, PA

### 50 Bred Gilts

30 Yorkshire bred Yorkshire

20 Duroc bred Duroc

60 Commercial Yorkshire bred Yorkshire

All bred gilts are hand mated. Pick dué dates to fill your farrowing schedule.

### 50 Open Gilts (Ready to breed)

25 Registered Yorkshire or Duroc

25 Commercial Yorkshire or cross bred

### 40 Boars

25 Yorkshire

15 Duroc

7 - 8 months old, ready for heavy service

Friday Afternoon

February 22, 1980 1:00 P.M.

SALE TO BE HELD AT THE

Lebanon Area Fairgrounds

(CORNWALL & EVERGREEN ROADS, 1 1/2 MILES SOUTH OF)

Lebanon, Pa.

FOR CATALOGUE WRITE TO

LEON L. ARNOLD, R.D. 7, BOX 705, LEBANON, PA. 17042

OR CALL 717-273-5880