

Public Sales Register

Closing Date - Monday, 5:00 P.M.
of each week's publication

PUBLIC SALE

OF
**SHOP EQUIPMENT, HAND
& GARDEN TOOLS, FURNITURE**
SAT., FEBRUARY 16

at 11:00 A.M.

Sale to be held in the Al Starr Community Building, village of Willow Street, Pa. (Loc. along north rt. 272 behind new Firehall)

Lincoln welder, Huskee kerosene heater, Dunlap metal lathe, mech. lathe, Atlas jointer, table saw, Ideal soldering set, lots of other shop equipment. Power, hand & garden tools. Lots of misc. nuts, bolts, etc. Oak rd. ext. table, mahg. knee hole desk, & other furn. Other misc. articles not listed. Not responsible for accidents day of sale. NO OUT OF STATE CHECKS. Food served.

Sale by:
MRS. JAMES M. ERB

Auctioneers:
Howard Shaub 464-3541
Roy C. Probst 464-3190

WED MAR 5 9 A.M. Consignment Sale by David H. Good located 1/2 mile North of Route 23 on North Maple Ave in Leola, Lancaster Co., Pa. Watch for sale signs F Snyder, R Martin, C Wolgemuth, J Fry and L Horst Auctioneer

WED MAR 5 10:00 A.M. Public Sale of Farm & Irrigation Equipment Sale for Joseph Hetzler, Cohnsey Halfway House Rd (Rt 540), Cohansey, NJ (Use Rt 322 to Rt 77 to Deerfield, Thence Rt 540 to sale site) Sickler & Scott Auctioneers

WED MAR 5 - Public Sale for Central Pennsylvania Equipment Dealers, RD1 Box 524A, Mill Hall, PA 17751 PH 717-726-3115

THURS MARCH 6 - 9 A.M. Farm Equipment, Household Goods & Lumber Located along Rt 241 1/2 mile South of Lebanon Sale by Mrs Elmer B

Zimmerman Nevin Z Martin & Lewis B Groff Auctioneers

THURS MAR 6 - 9:30 A.M. Public Sale of Horses, Cattle, Machinery and some Household items Located in Centre Co., turn south off Rt 45 about 1 mile East of Aaronsburg, PA on 1st hard road, travel 1 mile turn left Eli B & Franee Zook Rd, Woodward, PA Owners Mark Glick, Reedsville, PA Auctioneer

THURS MAR 6 - Public Sale of Dairy Heifers and Farm Equipment Held in Marion Twp, Berks Co., PA 2 miles north of Womelsdorf, 1/2 mile east of Rt 419, Mary Darkes Owner Earl S Buffenmeyer Auctioneer

THURS MAR 6 - Melvin Hertzler Farm Equipment Dispersal near Mechanicsburg, PA Ralph W Horst Auctioneer

THURS MAR 6 Monthly Cow Sale at the Melvin Kolb, Inc Sales Barn, 2220 Dairy Road, Lancaster, Pa 17601 Dennis Kolb, Sales Manager, Robert Mullendore, Auctioneer

THURS MAR 6 - Public Sale of Full line of Farm Machinery, Located 3 miles southeast of Mifflintown, 1/2 mile east of Port Royal Interchange Wilbur Graybill Owner Long Brothers Auctioneers

FRI MAR 7 - 11:00 A.M. Horse Sale Held at New Holland Sales Stables, New Holland, PA

FRI MAR 7 - 9:30 A.M. Machinery Sale - Annual Spring Sale - Consignments of all kind of machinery, Belleville Livestock Market, Belleville, Pa Mark Glick Auctioneer

FRI MAR 7 - Carl H Martin Farm Equipment Dispersal Located 1 mile east of Marion

PA along Rt 914, Ralph W Horst Auctioneer

FRI MAR 7 - 10:30 A.M. Public Sale of Valuable Late Model Farm Machinery, Tools and Pickup Truck, Located along Duke St Ext (Adamsville Rd) in the Boro of Dallastown, York, Co., PA C Alfred Taylor Owner Robert L Sechrist Auctioneer

THURS. MAR 7 & 8 9:30 A.M. Public Sale of Farm Equipment, Vehicle and Tools Held at the Frederick Fairgrounds, Frederick, MD Trout Auctioneers, Inc

FRI MAR 7 - 1:30 P.M. Public Sale of Harvestore Located along Rt 372, 3 miles west of the Buck, 14 miles south of Lancaster, PA Terms by Jacob Groff, Everett Kreider and Steve Petersheim Auctioneers

SAT, MARCH 8 - 10:30 A.M. Public Sale of Farm Machinery, Bred Sows, Hay, Ear Corn, Straw, Oats, Butchering Tools, & John Deere 1020 Tractor Located 4 miles South of the Buck at Chestnut Level Terms by Leonard & Gladys Sprout Auctioneer Steve Petersheim

SAT MAR 8 - 8:30 A.M. 12th Annual Spring Sale Held at the Gordonville Fire Co., Gordonville, PA Selling Household Goods, Antiques, Farm Equipment, Building Supplies, Livestock Donated items accepted Local Auctioneers

SAT MAR 8 - 9:30 A.M. Public Sale of Holstein heifers, Dairy Equipment, Machinery & Some Household Located in Centre Co., 4 miles west of Centre Hall, PA on Rt 192, Brush Valley Rd Mr & Mrs Charles T Keller, Rd 1, Centre Hall, PA, Mark Glick, Reedsville, PA Auctioneer

SAT MAR 8 - 10:00 A.M. Public Sale of Farm Equipment and Household Goods Located along Hahnstown Rd., first farm on left going from Hahnstown to Bergstrasse, Ephrata Twp., Lancaster Co.,

PA Terms by Joseph S Brubaker T Glenn Horst and Timothy G Horst and Timothy G Horst Auctioneers

SAT MAR 8 - Third Annual Public Consignment sale at Newburg-Hopewell Volunteer Fire Co., Newburg, PA, Cumberland Co Art Rife Auctioneer

SAT MAR 8 - 10:30 A.M. Annual Farm Equipment Auction held at Hunter's Sale Barn, Inc., Rt 276, Rising Sun, MD 21911 Norman E Hunter Auctioneer

SAT MAR 8 - 1:00 P.M. Sale of Valuable Real Estate - 4 unit apartment house Located at 218 E Market St, Orrigsburg, Schuylkill Co William & Mary Spatz Owner Kenneth P Leiby Auctioneers

SAT MARCH 8 - Public Sale of Farm Equipment Located 2 miles South of Shartlesville along Schoolhouse Rd, Berks Co., Pa Sale by Clarence J Berger Auctioneers Bixler & Kramer

MON MAR 10 - Public Auction of Farm Equipment for John Eby and Isaac Eby location - Take Rt 322 West from Ephrata to Weidmansville Road, turn right to first left, then first right to farm on right John E and Paul E Martin, Auctioneers

MON MAR 10 - 10:30 A.M. Public Sale of Farm Equipment and 20 Bred Holstein heifers Located along Mountain View Rd., 7 miles east of Shipensburg, Cumberland Co., PA Sale for Paul W Sauder Nevin Z Martin Auctioneer

MON MARCH 10 - 1 P.M. Public Auction of Valuable 34 Acre Lancaster County Farm located in Rapho Twp., Lancaster County, Pa., just South of Rt 230, 2 miles East of Mt Joy Borough, along the Eby Chiques Road to east side of Natl Cash Register Co Sale by Lois E Will, E M Murry Associates, Auctioneers

OPPORTUNITY KNOCKS!

FEESER'S 20th PRODUCTION SALE

at
Duke's Feeder Pig Sale Barn
Salisbury, MD

Go south Rt. 13 - 3 miles south of Salisbury - Turn on Stockyard Rd.

SATURDAY, FEBRUARY 16, 1980
1:00 P.M.

Offering:

20 Yorkshire Boars 15 Yorkshire Gilts
7 Hampshire Boars 30 (Cross Bred) Gilts
Test Figures Adjusted to 230 lbs.

York Boars	Days/230	BF	LEA	% LEAN	INDEX
8-1	166	.53	3.40	64.0	198
8-2	170	.53	3.60	65.1	200
9-2	174	.59	3.60	64.0	190
9-3	179	.48	4.50	65.9	206
9-5	157	.60	3.50	62.5	198
12-4	161	.59	4.40	63.6	201
13-1	168	.56	4.40	64.9	201
13-3	168	.64	4.20	63.3	192
13-7	176	.62	4.60	63.2	184
14-1	155	.73	4.40	60.7	189
14-4	189	.70	5.10	63.1	188

Other figures available sale day

Genetic improvement in your herd is the key to sound reproduction and a superior end product for the consumer. The average market hog in this country is only 55% lean cuts. The formula used for these figures originated from Ohio Test Programs. They recognize boars with 180 index or higher as being above average. Don't you need to look at seed-stock that is bred to grow and produce a product with the future in mind?

Pigs Are PRV Tested.

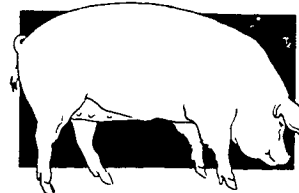
Delivery Available

For Information Contact:
FRANK FEESER
Box 372
Taneytown, Md. 21787
(301) 751-1287
(301) 756-6335

Auctioneer: Don Joyner, Va.
Ringman: Dan Frobose, Yorkshire Journal
Phone Sale Day - (301) 749-5979

CALVIN H. LAZARUS & SONS 4TH PRODUCTION HOG SALE DUROC YORKSHIRE & SPOTTED

WITH GUEST CONSIGNORS:
TERRY L. BENNECOFF & SON, KUTZTOWN, PA
HAMPSHIRE AND BERKSHIRE
HARLAN WESSNER & FAMILY, NEW TRIPOLI, PA
LANDRACE



70 BRED GILTS, 40 OPEN GILTS, 40 BOARS
6 PIG GUARANTEE ON BRED GILTS
ALL STOCK GUARANTEED TO BE BREEDERS
TOP HOGS WILL BE TESTED FOR PSEUDORABIES

SATURDAY, FEBRUARY 23
SATURDAY, MARCH 29

1:00 P.M.

Sale held at the farm of Calvin H. Lazarus & Sons, 4290 Bridge St., Whitehall, PA Lehigh County., 4 miles North of Allentown on Rt. 145 to Columbia St., make left, second black top to right, first farm on left.

For Catalogs write or call:
CALVIN H. LAZARUS
4290 BRIDGE STREET
WHITEHALL, PA 18052
215-799-3375

Auctioneer:
Ralph W. Zettlemoyer

- Free Lunch -