

# Berks Co. DHIA

(Continued from Page D2)

Wilmer Driebelbis					
Prudenc H	7-6	305	19,556	747	
Charles W Wagner					
Serge H	4-11	305	18,618	678	
Banlon H	4-10	305	23,137	667	
Donald B Duncan					
#14 H	5-2	305	22,219	804	
#8 H	3-7	305	18,550	686	
James H Adam					
Berry H	3-6	305	17,223	653	
Jodie H	3-5	293	15,661	682	
Donald E Landis					
#158 H	4-8	305	17,762	677	
William G. Howertér					
Ruth H	6-8	305	19,409	749	
Peppy H	5-4	305	21,984	756	
Princes H	3-1	305	22,326	779	
Rhoda H	3-2	305	19,948	821	
J. G. Stutzman & Sons					
Magnola H	4-6	305	22,469	813	

RC & C L Wheeler					
Megan H	6-0	292	14,058	665	
Way Har Farms					
#122 H	4-7	305	24,905	760	
#65 H	2-1	305	16,010	740	
Stephen J Janos					
Mariane H	3-1	305	22,069	687	
William C Adams					
Anna H	6-4	305	17,805	784	
Barbra H	3-11	305	14,643	716	
Ban H	3-2	305	17,455	747	
Rose H	3-3	305	18,564	757	
R R Troutman & Sons					
Phyllis H	4-4	305	21,134	700	
Clover H	7-4	305	21,353	840	
Bess H	7-9	304	20,818	749	
Bette H	5-1	305	17,814	812	
Mervin Brubaker					
Ann 36 H	6-11	305	15,894	669	
Debby 95 H	5-4	305	19,387	719	
George E Moyer					
36Mryan H	8-2	305	19,008	784	
85Gina H	4-3	305	20,668	703	

# Lancaster Farming, Saturday, February 9, 1980-D3

Earl R Hafer					
#131 H	4-1	305	17,310	684	
J D Rosenbaum & Son					
#34 H	5-3	302	17,072	687	
Robert L Sattazahn					
Peg H	6-11	305	20,121	729	
Cathryn H	5-7	305	16,888	651	
Ray E Bicksler					
Fancy H	4-0	305	20,798	781	
Snsine H	3-3	297	21,073	731	
Glenn B Gockley					
#37 H	8-3	305	17,999	693	
Pinnacle View Dairy					
Melba H	6-9	297	16,512	662	
Frank G Gromlich					
Skycro3 H	7-4	305	17,300	680	
Robert Sittler					
Sandy H	10-7	305	19,049	651	
Clarence B Kulp					
#96 H	7-8	305	20,935	745	
Larry E Phillips					
#88 H	4-5	305	19,807	657	

(Turn to Page D4)

**SAVE \$\$\$**

**Ask Us For Repowering**

# REPOWER

## WITH VM DIESEL

Harvesters, Haybines, Tractors, Cornpickers, Balers, Hydraulic Systems, Corn Binders, Choppers

**SAVE \$\$\$**

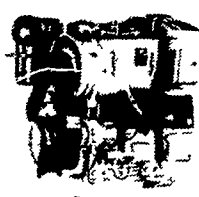
**Ask Us For Repowering**



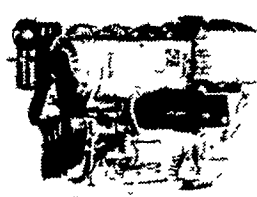
### 1050 SU SERIES



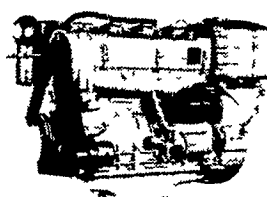
2800 R.P.M.  
22 SAE HP  
20 DIN HP



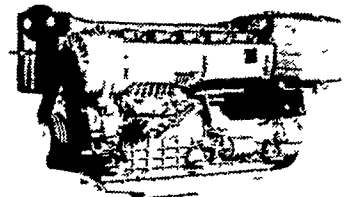
2800 R.P.M.  
44 SAE HP  
40 DIN HP



2800 R.P.M.  
66 SAE HP  
60 DIN HP



2800 R.P.M.  
88 SAE HP  
80 DIN HP



2800 R.P.M.  
132 SAE HP  
120 DIN HP

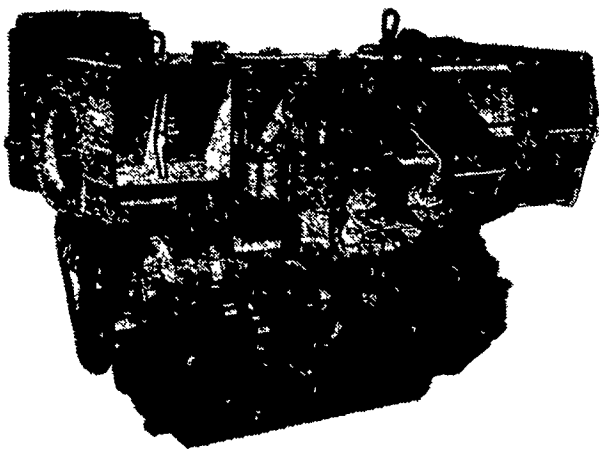
## THE NEW AND REVOLUTIONARY FAMILY OF ENGINES

### All New HR Series

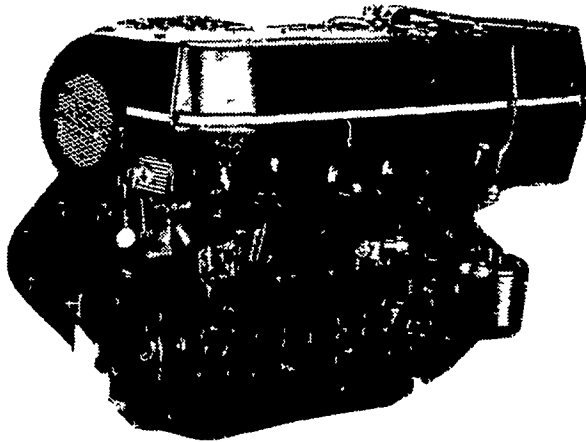


Oil Cooled Jacket

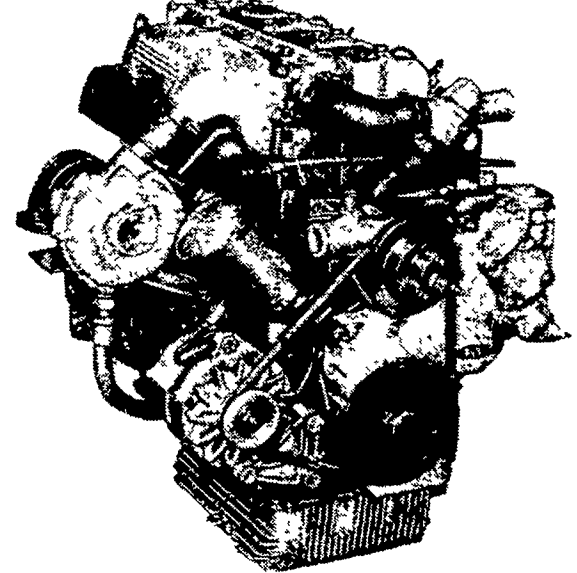
#### OIL COOLED



#### AIR COOLED



#### WATER COOLED



#### General Features:

- Integrally cast cylinders with inserted and removable wet type cylinder liners
  - Light hypereutectic alloy pistons
  - Extra-resistant steel connecting rods alloyed with special alloy head bearings
  - Surface hardened steel crankshaft
  - Drop-forged, casehardened and tempered steel camshaft
  - Anti-friction cast-iron tappets alloyed
  - Cast-iron tunnel type crankcase
  - Rotary injection pump with mechanical governor
  - Force-feed lubrication with built-in circuit and lobe type pump.
  - Diaphragm pump feed
  - Oil and fuel filters with integral type element.
- Special structure and patented engine with consequent increases in performance and easier operation with low weight/output ratio low smoke emissions.
- Engine based on a design "modulus" formula which allows a maximum parts standardization and interchangeability.

**Ask For Horsepower Ranges Of Above**  
**THE "RIGHT FROM THE START" DIESEL ENGINE LINE**  
**FOR FAULTLESS PERFORMANCE**

#### USED DIESELS

- (4) SR 2 Lister
- F6L - 912 Deutz
- 100 hp. Lister
- Cylinder Deutz
- SR 3 Lister
- DVA 2220 Slanz
- P J2-Pettar

# QUEEN ROAD REFRIGERATION

Box 67, Intercourse, PA 17534  
Phone: John D. Weaver - 717-768-9006 or 768-7111  
or Answering Service - 717-354-4374

**24 HOUR SERVICE**