

Farm Business News

(Continued from Page C33)

Grain storage alternatives to be presented

TERRE HILL — The Garden Spot Young Farmers will sponsor a meeting on grain storage alternatives, on Tuesday, February 12, 1980, at 7:30 P.M., at the Union Grove School.

The objective of this meeting will be to examine various grain storage alternatives such as grain bins, grain dryers, low-energy drying, and high-moisture corn.

Speakers for the evening will include Milford Mast on Chill-curing (drying corn with low-energy requirements using fans and infra-red lights), a Harvestore representative to discuss high-moisture corn storage, and several farmers who dry and store their own grain.

With more growers harvesting or combining grain early to avoid large

amounts of field loss, the storage of this grain requires attention. With energy costs rising and fluctuating grain markets, profit or loss can often be determined by drying, handling, and storage decisions. This meeting will examine some of the alternatives to consider to make these decisions.

The Union Grove School is located on route 625, two miles north of Route 23. All area farmers are welcome. For additional information call Don Robinson, Adult Farmer Instructor, 215/445-5041.

About 2 percent of all farms account for 40 percent of all farm production and 18 percent of total net farm income, says the U.S. Department of Agriculture.

CAMP HILL — Several agribusiness firms were represented at a defensive driver training program held last week in Camp Hill. The course, sponsored by PennAg Industries Association, has been shown to reduce both the severity and the number of accidents for drivers taking it.

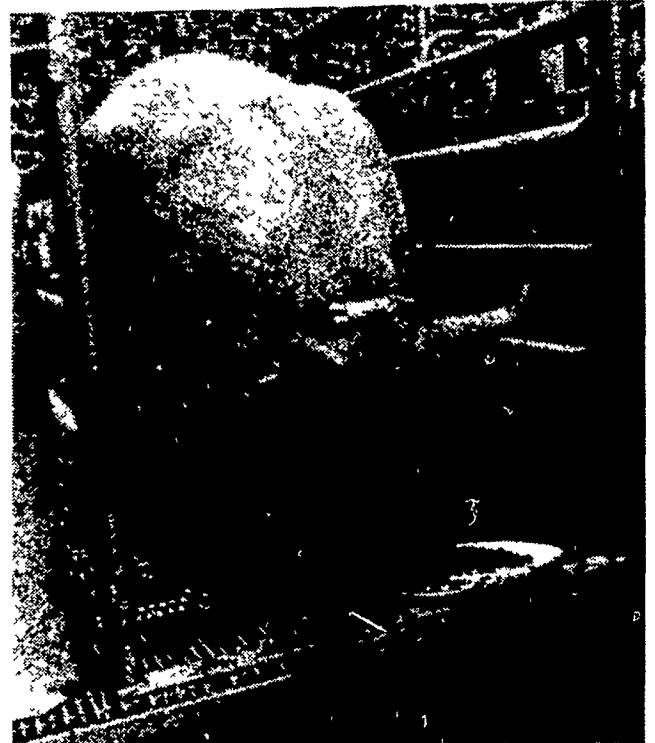
PennAg members represented at the seminar, and the names of their drivers attending, are listed below:

Wilkes-Barre: Pa. Millers Mutual Insurance Co., - Bob Hartman, Bill Spencer; Martinsburg: Martinsburg Milling Co., - Don Saber, Gary Wyles, Russell Eselman, Allen Phillips; York: Spangler & Sprengle, Inc., - Michael Lunebaugh, Gregory Loyd; Rheems: Wenger's Feed Mill, Inc., - Gary Collins, Tim Grube; Pottstown: Pottstown Roller Mills, Inc., - Douglas E. Saylor; Mt. Joy: Spangler's

Flour Mills, Inc., - Edward Good, Robert Light; York: Beacon Milling Co., Inc. - John Herman, Wilford Myers, Scott Sharp; Mt. Joy: Wolgemuth Bros. Inc., - Scott Burger, Eugene R. Hess, Sr., Harvey K. Showmaker, Gerald T. Stephens, Lester G. Ruhl, James A. Longenecker, James Thompson, William H. May, Leroy K. Shonk, Eric D. Yordy, Scott L. Martin, Reuben L. Auker, John R. Greenly, Ellis Esbenshade, Kenneth L. Buffenmyer, John Keener, Craig Marshall; Glenville: Glenville Farm Center - Larry D. Baer, Lewistown: S.H. Goss, Inc., - Gary Hagemeyer; Kreamer: Kreamer Feed Store - Dale Camp, John Kessler, Charles Long, Kevin Kantz, Robert Miller; Lancaster: R/K Agri Service, Inc., - Dennis Brubaker; Lebanon: Mark C. Hershey Farms, - Dale Ebersole; Shremanstown: Beachley-Hardy Seed Co., - Alvin L.

Wiest, Gary M. Wiest; Stewartstown: Stewartstown Milling Co., - Stanley Little, Lynn Yeager, Kenneth Rineholt; Gap: Walker Co., - Daniel L. Henry, Thomas J. Nixon, John A. Walton; Paradise: John J.

Hess II, Inc., - Dan Lehman, Sam Wanner; Bangor: Penn Bangor, Inc., - William Albert, Graig Kneebone; Belleville: Union Mill Soil Service, Inc., - James Stauffer, Donald Peachey, Ed Glick, Ben Zook.



A new concept in sow management is the elevated farrowing crate, with sows wearing collars.

Lime, fertilizer officers elected



Officers of the Pennsylvania Plant Food and Protectant Educational Society, elected at the organization's recent annual meeting on Penn State's main campus, are from left: Lynn Hoffman, superintendent of the Penn State Agronomy Research Farm, president; John G. Dantine, of the Lancaster Bone Fertilizer, Inc., Quarryville, immediate past president; and Robert J. Thomas, manager of the Penn State Soil And Forage Testing Laboratory, secretary-treasurer. The vice president, not shown, is Dean Nelson, of the Stauffer Chemical Co., Fayetteville.

COMING FEBRUARY 26 & 27 . . .

Mark Your Calendar & Plan To Attend Our

Open House

WATCH FOR FULL DETAILS IN FUTURE ISSUES OF LANCASTER FARMING!

ALLIS CHALMERS AND NEW IDEA SALES & SERVICE

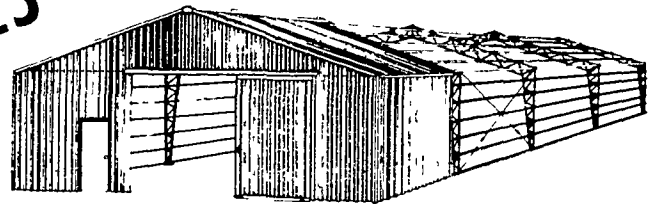
ROY H. BUCH INC.



Ephrata RD2, PA
Phone 717-859-2441



YES this building costs 40% less!



YES, it costs 40% less than conventional steel buildings!
PARTY CONSTRUCTION CO., INC.
1218 Steuben St. Utica, N.Y. 13501 315-724-5593

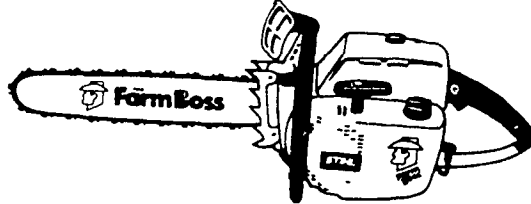
INVENTORY CLEARANCE SALE

20% Off Our Sale Price

- ★ Mowers
- ★ All Other Equipment In Stock

— ALL SNOWMOBILES —
AT DEALER COST

WE HAVE THE FARM BOSS®
AND IT IS A STIHL®.



10% OFF ALL CHAIN SAWS

SHADY MAPLE LAWN & GARDEN

RD2, East Earl, PA 717-354-4988

NEW FEBRUARY & MARCH ► Mon., Tues., Wed., Sat. 9-5
STORE HOURS Thurs. & Fri. 9-9



Finance America

