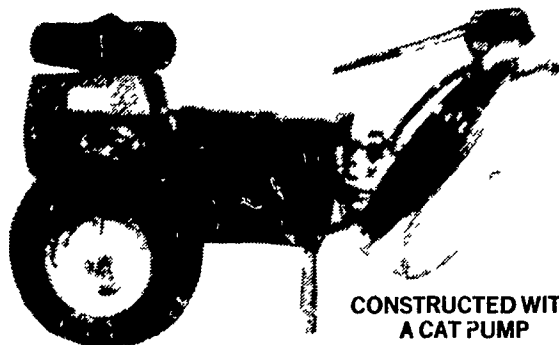


**WE MANUFACTURE  
HIGH PRESSURE WASHERS**  
Portable or Stationary



CONSTRUCTED WITH  
A CAT PUMP

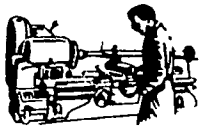
Detergents or Soap Fluid Injection Available

**WE ALSO MANUFACTURE**

- Custom Built Hog, Cattle Gates and Head Gates to Your Specifications
- Coal Fired Hot Water Supply Boilers



Machine Work  
Welding &  
Farm Supplies  
Hardware



- ★ Suburban Wood & Coal Stoves
- ★ New & Used Structural Pipe
- ★ **NOW** We Can Repair Worn Shafts With a Special Powdered Steel Build Up Torch

**SPECIAL SALE**  
**14 PIECE COMBINATION  
WRENCH SET**  
3/8" to 1 1/4"  
While They Last **\$29.95**

**D.S. MACHINE SHOP**

3816 E NEWPORT RD., RD1 GORDONVILLE, PA 17529  
1 Mile East of Intercourse on Rt 772  
Write or Try and Call: 717-768-8569 (Outside Phone)  
Dealer Inquires Invited

# Roadside markets conference slated for Gettysburg

GETTYSBURG — Financial management and "The Paradox of Pricing" will be major topics for extension marketing specialists from two land-grant universities during next week's thirteenth annual Maryland-Pennsylvania Roadside Marketing Conference.

The event will run from Sunday through Tuesday, February 10-12, in its usual location at the Sheraton Motor Inn, located two miles south of Gettysburg, Pa., on the business route of U.S. highway 15.

Sponsors will again be the Extension Service at Penn State and the University of Maryland, with support from an informal consortium of farmer-to-consumer marketing organizations in the two states.

This year's program chairman is James S. Toothman, extension marketing specialist and professor of agricultural economics at Penn State.

Assisting with arrangements is Jarvis L. Cain, extension marketing specialist and professor of agricultural and resource economics at the University of Maryland in College Park.

Cain also will be lead-off speaker for the Monday afternoon program session. His topic is "Financial

Management for Farm Market Operators."

Lead-off speaker for the Tuesday afternoon session will be Ransom A. Blakely, extension marketing specialist from Cornell University, Ithaca, N.Y. His topic is "The Paradox of Pricing for Direct Marketers."

The Cornell, Penn State

and University of Maryland specialists will comprise an informal panel for the final presentation of the conference. Their topic will be "Direct Marketing Challenges in the 1980s."

Panel moderator will be Laurence L. Yager of Gettysburg, area Extension marketing agent.

Advance registration

deadline for the conference was February 1. But walk-in attendees are also welcome at a slightly higher registration fee. Total attendance last year was 372.

For further information contact Yager at Gettysburg, phone: 717/334-6271, or Cain at the University of Maryland in College Park; phone: 301/454-3801.

## York-Adams Grange sets meeting

RED LION — York-Adams Pomona Grange #40 will hold their quarterly meeting, February 9, 1980, beginning at 2:30 p.m., at the Red Lion Grange hall.

A covered dish meal will be served at 5:30 p.m., with the evening session beginning at 7 p.m. with a "Cake-walk."

Gladys Sheffer, Pomona Lecturer, will have as her special guest speaker, Miss Debra Hoover, Harrisburg, for the afternoon program, beginning at 4 p.m.

Miss Hoover was educated at the Pittsburgh School for the Blind, graduated from Bucknell University, has taught in the public school system, and now works at the Mechanicsburg Naval Depot.

The public is invited to hear Miss Hoover on "Advantages and Disadvantages" of her life.

The evening program, beginning at 7:30 P.M. will feature a member of the "Yorkarvers" who will show and tell the art of wood-carving. The evening program is open to the public.

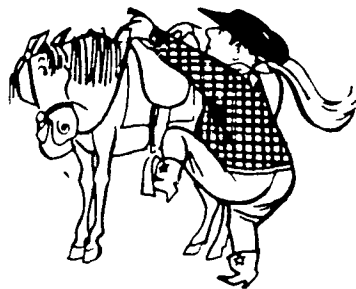
Dues nite was held when Red Lion Grange #1781 met Saturday, January 19,

beginning with a covered-dish meal at 6:30 P.M.

The business session was in charge of Lee Burns, Master. Plans to hold a soup & bake sale were discussed.

Naomi Bupp, Lecturer, held a quiz on the "life and times of Ben Franklin," with all members participating.

**SADDLE  
UP!**

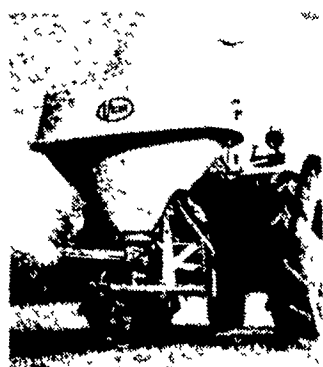


**TO BETTER EQUIPMENT  
Find It In Lancaster Farming's  
Classified Pages.**

**Vicon** fertilizer spreader

The most accurate  
fertilizer spreader  
you can buy

The Vicon Spreader uses an exclusive fast-action spout moving back and forth at 540 times per minute to give even, rectangular coverage instead of the usual circular pattern. That means increased profit because you get uniform fertilizer coverage, resulting in better stands and higher yields.

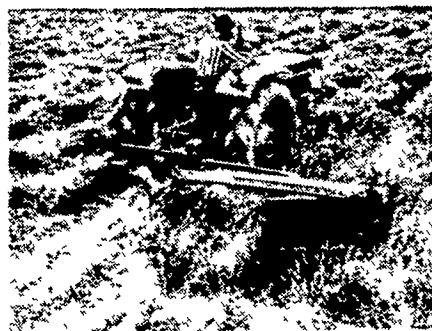


Give the Vicon fertilizer spreader a try. It costs no more than others. But it's better.

**Vicon** doublet/mower conditioner

New concept  
in cutting and  
conditioning  
grass

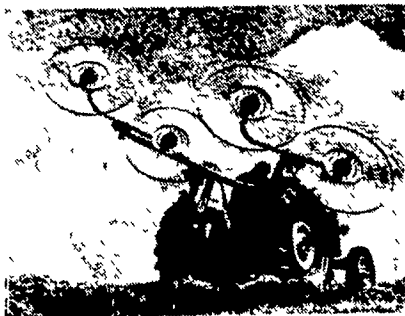
The New Vicon Doublet/Mower Conditioner offers a new concept in grass conservation. The Vicon Doublet/Mower cuts, conditions and produces a light airy swath, reducing valuable time required to produce good quality hay and wilted silage. Conditioning at the same time as cutting is accomplished by incorporating the same cutter bar as the Vicon Disc mower with a conditioning rotor mounted above. The sucking action picks up the cut grass and delivers it to the back of the machine in light, fluffy swaths.



**Vicon** acrobat hay rake

Tedds as well  
as rakes...and  
costs about  
one-third less

The Acrobat is a high-capacity ground driven rake with no gears, belts or power shafts to break. Fits 3-point hitch tractors. And can be used for tedding as well as raking, turning swaths and fluffing without the need for tools to change from one operation to another.

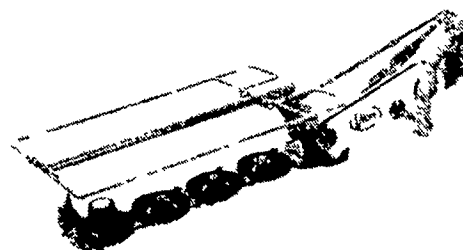


The Acrobat is a big worker for a little price. Put it to work on your farm.

**Vicon** discus/disc mower

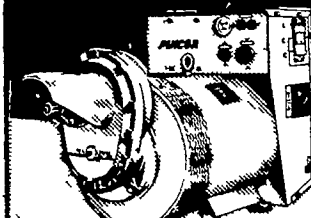
Fast speed and low power requirements

The new Vicon Discus disc mower offers outstanding characteristics of fast speed and low power requirements along with easy setting, safe working, no blockages. The Vicon Discus disc mower can tackle the heaviest standing grass as well as laid and tangled crops with a minimum of power. No tools are required to change from transport to working position. Transporting the Vicon Discus along narrow roads is made easy with the Discus in vertical position.



**PINCOR**

your insurance  
against costly  
power failures



**TRACTOR DRIVEN  
ALTERNATORS**

15,000 thru 75,000  
watts A.C. POWER

**SPECIAL FEATURES**

- Continuous duty alternator ratings
- Long life 1,800 R P M alternator operation
- Five-year warranty
- Lease purchase plan
- All copper wired and wound
- High surge capacity for electric motor starting
- Instantaneous voltage build up even after long storage periods
- Affordably priced

**LEE WEAVER**  
RD 1 Box 34  
Mifflintown, PA  
17059  
717-436-2326

**HIRAM STOLTZFUS**  
Harrington, DE  
19952  
302-422-3208  
302-398-8458

**Vicon** the better idea from Holland

Vicon Farm Machinery, Inc.  
P.O. Box 6313,  
3741 Cook Blvd.,  
Chesapeake, Virginia 23323

**GIDEON L. FISHER**  
RD 1, Box 108  
Ronks, Pa. 17572