

Public Sales Register

Closing Date - Monday, 5:00 P.M.
of each week's publication

SAT, MARCH 15 - 10 30 A M
Public Sale of Farm Machinery, Milking Equipment, Hay, Ear Corn, Straw & Household Goods Located 4 miles East of Intercourse, 2 miles West of Whitehorse, along Rt 340 Terms by Jay A & Ruth Meck Auctioneer Steve Petersheim

Lancaster Co Pa Farm Equip and Livestock C H Wolgemuth Auct

MON MARCH 17 - Public Auction of Farm Equipment Located at 1841 W Main St, Ephrata, Pa Sale by Franklin W & Frannie L Shirk John E & Paul E Martin Auctioneers

SAT, MARCH 15 - 1 P M Sale of Bred Gilts, Open Gilts & Boars by the Pa Yorkshire Club. Located at the Lebanon Fairgrounds, Lebanon, Pa For information write or call Leon Arnold, Secretary Treasurer, Pa Yorkshire Club, Rt 7, Box 705, Lebanon, Pa 17042, 717-273-5880

MON MAR 17 - 5 00 P M Public Sale of Tools, Antiques and Household Goods Located at 1216 Main St., Akron, PA Terms by Joseph A & Margaret Bonacuse T Glenn Horst Auctioneer

TUES MAR 18 - Kiebach Dispersal at Lewis Co, NY on Rt 177 between Adams Center and Lowville, NY at New Boston, 110 head interstate tested mature Holsteins and Machinery Owners Mr & Mrs Harold Kiebach 315-376-2013 Auctioneers Vic & James Pirrung, Jerry Pirrung, Robert Shaylor

SAT MAR 15 - 10 30 A M Public Sale of Farm Equipment, Some Household Goods Located 4 miles southeast of Strasburg, 2 miles northwest of Georgetown, 2 miles west of Rt 896, 1/2 mile south of White Oak Rd, from the Mt Pleasant Mennonite Church along Mt Pleasant Rd, Lancaster Co, PA. Omar S and Marian Stoltzfus Owners Abe Dffenbach's Auctioneers

TUES MAR 18 - 9 00 A M Public Sale of Holstein Heifers and Farm Machinery Located in Mifflin Co., about 1/2 mile west of Reedsville, PA on Rt 655, turn north on Airport Rd Dan J Swarey Owner Mark Glick Auctioneer

TUES MAR 18 - Cedar- Shade Farm Holstein Dispersal for Paul & Mary Gsell Located 9 miles south of Chambersburg, PA Ralph W Horst and Robert Mullendore Auctioneers

SAT MAR 15 - 10 A M Public Sale of Farm Machinery, Household Goods & Livestock Located along Millway Road (between Maple Farms Road and Cocalico Creek Rd), Ephrata Township, Lancaster Co, PA Terms by Daniel E Sauder T Glenn Horst & Timothy G Horst, Auctioneers

TUES MAR 18 - Carlisle, Pa Full Line of Latest Farm Machinery, Tools and Misc Items Zeigler Bros, Owners, Art Kling, Auct

SAT MARCH 15 - 6 30 P M Danville Livestock Market, horse sale Located Old Route 11, Danville, PA Melvin M Lehman, owner

WED MAR 19 - 9 A M Con signment Sale by David H Good Located 1/2 mile North of

MON MAR 17 - Owen Mum mau R D #2 Mt Joy, Pa North of Rt 230 along Grandview Rd

Route 23 on North Maple Ave in Leola, Lancaster Co, PA Watch for sale signs F Snyder, R Martin, C Wolgemuth J Fry and L Horst Auctioneer

THURS MAR 20 9 00 A M Public Sale of Machinery, Tools, Produce, Etc Located in Centre Co., 1/4 mile west of Rebersburg, PA on Rt 192, Mel Stoltzfus, Rebersburg, PA Owner Glick, Gibboney & Snyder Auctioneers

THURS & FRI MAR 20-21 - Large 2 day sale at Horst's Machinery Sales Yard, 1/2 mile east of Marion, PA Ralph W Horst Sale Manager

THURS MAR 20 - 6 00 P M Public Sale of Outstanding Antiques Held at the Brickerville Fire Hall, located just off Rt 322 (between Ephrata and Hershey), Brickerville, PA Terms by Anne Reese and Helen Richardson T Glenn Horst Auctioneer

FRI MAR 21 - Newport, Pa Complete Line of Top Quality Farm Machinery, incl 7 tractors & Misc items - Howard Barkley, Owner Art Kling, Auct

FRI MAR 21 - Public Auction of Farm Machinery, Livestock and Household Goods located along Good's Drive 1 mile west of Hinkletown, 1/2 mile north of Fairmont Rest Home Sale by Aaron I Martin Frank and Paul Snyder, Auctioneers

SAT MARCH 22 - Public Auction of Modern Farm Machinery, Household Goods for Mr & Mrs Ralph Moyer, RD #4, Lebanon off Rt 322 South of Umbergers Mill in Fontana Harry H Bachman and Earl Buffenmeyer, Auctioneers

SAT, MARCH 22 - 9 A M Farm Equipment, Household Goods & Livestock Located approx 1 mile south of Muddy Creek, Corner of Muddy Creek Rd & Lausch Rd East Cocalico Twp, Lanc Co Terms by Martin N & Mary Hoover Elton & Alvin Horning Auctioneers HORN ING FARM AGENCY, INC

LARGE 2 DAY PUBLIC SALE OF FARM EQUIPMENT, CARS, TRUCKS, MEAT EQUIPMENT, LANDSCAPING EQUIPMENT, OFFICE EQUIPMENT, NURSERY STOCK INVENTORY SATURDAY, FEBRUARY 16 & 23

Sat., February 16

Starting at 9:00 a.m.
Small items sold first

Location - Take Rt. 34 north from Carlisle to junction 850 (Handy Market), turn left 3 miles to Davis Nursery Center, Carroll Twp., Perry Co., PA. Watch for sale signs.

MEAT STORE EQUIPMENT

(2) Penn K D walk-in coolers; Tyler meat display case BUV8TP, 20 ft., model 78-70; Tyler Island Produce case 16 ft. with dry display end model 411031; Universal cabinet freezer; (2) cutting tables (8'x30"); Hobart tenderizer; Hobart meat saw table; Hobart meat grinder; Hobart food processor; stainless steel sink & miscellaneous items including pans, hooks, trays, paper.

GREENHOUSE & EQUIPMENT

(2) 100 ft. Superlift aluminum truss poly houses; (4) Modna gas unit heaters; (6) 3 ft. exhaust fans & shutters; (2) Powermatic oil fired unit heaters; plant tables; soil mixer (model SM-1Y-3 10 ft. conveyor); seed germination unit, fertilizer injector; arafier; fertilizer spreaders; 2" irrigation pipe; nursery plant pots, 1, 2, & 3 gal.; burlap; vermeer baskets; post hole digger; roto hoe soil shredder; portable Salamander heater; misc. pots, and flats.

LAWN & GARDEN SUPPLIES

Scotts fertilizer including Lawn Pro products; Prolawn fertilizer products; Ortho products; Sterns products; garden seeds; misc. clay and baskets & pots.

NURSERY STOCK INVENTORY

30 acres of evergreens, shade trees, flowering trees and shrubs.

Sat., February 23

Starting at 10:00 a.m.
Small items sold first

Location - 2 miles west of Elizabethtown off Rt. 230 on Hoffa Rd., Lancaster Co., PA. Watch for Davis Turf, Inc. Landscaping Garden Center.

TRUCKS

1976 Chev. pickup; 1968 Int. stake body with hyd. lift tailgate; 1979 Dodge Coachman van; 1964 Ford flat truck dump; 1964 Int. Van body; 1970 Int. flat dump truck, 1969 Int. stake body; 1963 Int. flat dump; 1978 Ford Flat dump; 1979 Chev. pickup; 1965 Int. pickup; 1978 Ford crew cab pickup; 1974 Int. van body; 1966 Chev. tank truck; 1964 GMC flat bed; 1974 Ford dump; 1967 Ford dump; 1961 Int. dump; 1970 Int. flat dump; 1956 Mack asphalt dist.; 1970 Chev. van; 1962 Diamond T tractor truck, cummins diesel; 1974 Mack tractor truck with sleeper, very low milage; 1963 Mack with spreader body; 1971 Int. flat dump; 1967 Int. flat dump; 1963 Mack truck tractor; 1967 Int. roll back equipment body, 1970 Int. crew cab pickup; 1970 Chevy van; 1971 Int. truck with 1500 gal. hydro seeder; 1968 Ford van, 1963 Mack truck tractor.

TRAILERS

1957 Trailmobile tanker, as is; Smithco trailer; 1966 Freuhauf drop deck; 1941 Trailmobile cattle trailer; 1959 Freuhauf bulk tankers, (2) Freuhauf van, Kentucky flat with side-o-matic; 2 axle tag-along; 3 axle tag-along; 1971 Trailco flat; 1968 Troyer flat; 1973 movall trailer; Freuhauf dump trailer.

CARS

1979 Cadillac; 1971 Cadillac; 1975 Cadillac; 1976 Chev. El Comano; 1976 Int. Scout.

FARM TRACTORS

1967 1850 Oliver 4 WD; 1974 Ford tractor with Brower sod harvester; NH loader; Int. B414; 6000 Ford; 3600 Ford; 1957 Ford; 8000 Kubota; model 850 Case crawler; Ford 3000; 1968 Int. backhoe; 1850 Oliver; Int. dozer; 1255 Oliver with backhoe and loader; Int. with loader; Vermeer tree digger; Davis Trencher; 1973 140 Int. diesel; 1973 Int fork lift; 1973 Ford tractor with loader; Farmall C tractor; 1974 Ford 4000 diesel; 1974 Ford 4000 diesel; Tree digger-loader.

FARM EQUIPMENT

1000 gal. hydroseeder (junk); 1500 gal. hydroseeder (on #36); (2) Finmulchers; Rinco mulcher; power roller; walker power; tamper power, mixer, box; above ground Trogan pool; AC combine with corn and grain heads; Owatonna hay binder; NH baler; NH hay rake; hay elevator; 2 hay wagons; Gehl harvester with corn and grass heads; corn silage heads; 3 silage wagons, 1 Badger, 2 Gehl; AC no-till corn planter; 350 bu. corn dryer with gas tank; grain elevator, NH blower; Hammermill; grain drill John Blue sprayer; (2) Lely fertilizer spreaders; 3 pt. Jackson seeder; polly layer; 5 bottom Oliver plow; 3 bottom plow; chisel plow; (2) Athens disc; Oliver disc; 3 Brillion mulchers; 12' Brillion; tack trailer; 1000 gal. water tank; Lely roterra; 2 Howard hand tillers, 3 pt. Howard tiller; New hand tiller; post hole digger, 3 pt., (2) hyd. post hole diggers, Vermeer tree spade with case; (3) Olson boxes; (2) 10' Brillion seeders; 8' Brillion seeder, 3 pt.; (2) Anderson pickers; sickle bar mower; 5 ft. rotary mower; 5 ft. rotary mower, 3 pt.; rotary for 140; rotary for Kubota; tiller Kubota; Ford irrigation pump; 2", 4" & 6" irrigation pipe; manure spreader; portable welder, portable welder & generator; Hyd. floor jack; misc. shop supplies, pressure washer.

TURF & NURSERY STOCK

50 acres turf, 20 acres of nursery stock.

OFFICE EQUIPMENT

6 desks, 8 files; check writer, (2) Olympia electric typewriters; 4 adding machines; 1 file case, copy machine, (2) tables, steam jenny
Terms: Cash or approved check sale day.
For inspection call owner.

Sale by:

DAVIS TURF, INC.

For information call
717-944-1436

Auctioneer:
Nelson C Weidenbaugh
540 N Lewis Rd
Royersford, PA 19468
215-948-7619

Lunch Available

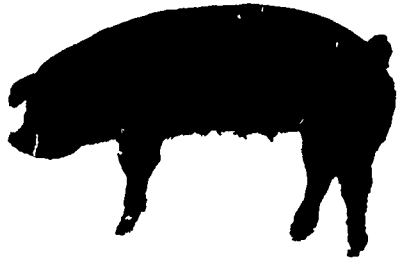
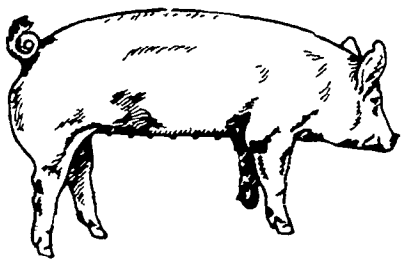
Lawrence, Leon and Thomas Arnold 13th PRODUCTION

SALE

Yorkshires

OF

Durocs



Auctioneer - Harry Bachman, Annville, PA

- 50 Bred Gilts
- 30 Yorkshire bred Yorkshire
- 20 Duroc bred Duroc
- 60 Commercial Yorkshire bred Yorkshire
- All bred gilts are hand mated. Pick due dates to fill your farrowing schedule.
- 50 Open Gilts (Ready to breed)
- 25 Registered Yorkshire or Duroc
- 25 Commercial Yorkshire or cross bred
- 40 Boars
- 25 Yorkshire
- 15 Duroc
- 7 - 8 months old, ready for heavy service

Friday Afternoon

February 22, 1980 1:00 P.M.

SALE TO BE HELD AT THE

Lebanon Area Fairgrounds

(CORNWALL & EVERGREEN ROADS, 1 1/2 MILES SOUTH OF)

Lebanon, Pa.

FOR CATALOGUE WRITE TO

LEON L. ARNOLD, R.D. 7, BOX 705, LEBANON, PA. 17042

OR CALL 717-273-5880