

# Ag official predicts further environmental progress

WASHINGTON, D.C. — The environmental momentum of the past decade will provide the impetus needed to meet the new environmental problems of the 1980s, Assistant Secretary of Agriculture M. Rupert Cutler said last Thursday during ceremonies marking the 10th anniversary of the signing of the National Environmental Policy Act.

"We are not here to mourn the passing of the 'Environmental Seventies' that began with NEPA but rather to celebrate the beginning of the 'Action Eighties,'" Cutler said "The decade

just ended left us with a legacy for action." NEPA, Cutler said, is generally regarded as the single most important piece of environmental legislation ever enacted and forms the "cutting edge" of the citizen-sponsored environmental reform movement.

"Although NEPA is now ten years old," Cutler said, "we have only begun to address it fully and build upon its foundation. It is a law which declared sweeping environmental policy where no such law existed before."

"It requires that the federal government predict

and consider the environmental consequences of its actions. And it established an environmental policy coordinating body in the Executive Office of the President — the Council on Environmental Quality."

Cutler said what is particularly notable about NEPA is that "after 10 years of implementation, the creative innovative intentions of policymakers have not been diluted or deferred in the transition from policy to practice. The new environmental consciousness which NEPA

established has reached the most remote recesses of federal agencies and now influences many of the decisions we make."

Cutler said NEPA's major impact on federal policymaking is that "we are making better decisions because of this law, decisions which weigh a broader range of options — which consider the environmental consequences as well as other implications — and which are more acceptable to the American public."

Cutler said the nation continues to face many environmental problems and that future environmental planning must be imaginative and flexible enough to meet the unexpected.

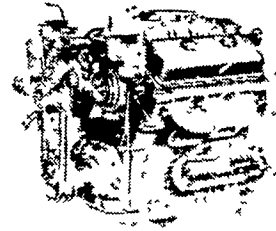
"At the dawn of the 'Action Eighties,'" Cutler

said, "we are ready for a new era of environmental protection — an era which reflects maturity of commitment, an era which integrates knowledge with that

commitment and gives the environmental protection effort the sophistication, lasting relevance and creative energies needed for the years ahead."

## DANIEL'S ENGINE CONTROL Diesel Engine Repairs & Rebuilding Daniel E. Stauffer

R. D. 3, Ephrata, PA 17522  
Rt. 322, Hinkletown • PH. 717-733-3890



• Specializing in GM & Detroit diesels for all applications • Experienced in 53-71-92-110 Detroit diesels • Korody-Colyer Replacement Parts & injectors for Detroit diesels.

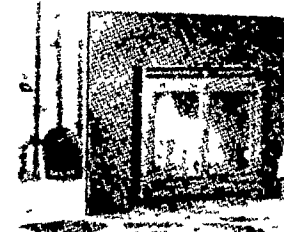
## Silver Pails 4-H elects officers



Newly elected officers of the Silver Pails 4-H Dairy Goat Club were recently installed during a candlelight ceremony at the 4-H Center. From left to right (front row) - Bill Henry, Norristown, who conducted the ceremony; Jennifer Bradshaw, North Wales and Jennifer Harris, Harleysville, both Junior Recreation Leaders. Second row are Karen Bradshaw, North Wales and Diane Blum, Harleysville, who are serving as senior recreation leaders; Lisa Ciasullo, Oreland, news reporter. Back row: Dana Trumbauer, Hatboro, president; Kim Bradshaw, North Wales, vice president; Susan Henry, Norristown Secretary; and Kim Blum, Harleysville, Treasurer. The club is open to all boys & girls 8-19 with an interest in goats.

## Fireplace Owners

A self-contained, wood-heating unit, the Leyden Hearth slips easily into your fireplace opening and dramatically improves your fireplace's efficiency. Three different panel sizes available. Brass accessories optional.



Units are in stock



The Leyden Hearth pulls air through the heating sleeve returning it to the room — heated.

### HOURS:

Monday thru Friday 9 til 5; Saturday 10 til 2  
Evenings Tues. & Fri. 7 til 9 & by Appointment.

Literature Sent Upon Request  
Check With Us for Dealer closest to you.

## PENDEL HEARTH & HOME

Fireplace Inserts, Stoves & Furnaces  
123 Pennsylvania Ave., Avondale, Pa.  
(Next to Fire Company)  
268-8222 or 255-4043

## See The Patz Dealer In Your Area For Products And Service...

### DISTRICT MANAGER

GEORGE HEATH, 472 Woodcrest Dr., Mechanicsburg, PA 17055 717-737-9400

**ALEXANDRIA**  
MAX ISENBERG  
814-669-4027

**BALLY**  
LONGACRE  
ELECTRIC  
215-845-2261

**BELLEFONTE**  
LUCAS BARN  
EQUIPMENT  
814-383-2806

**BELLEVILLE**  
MACLAY & SON  
717-935-2101

**CAMP HILL**  
LLOYD SULTZBAUGH  
717-737-4554

**CHAMBERSBURG**  
VALLEY FARM  
AUTOMATION  
717-264-3814

**ELLIOTTSBURG**  
CARL BAER  
717-582-2648

**HAMBURG**  
SHARTLESVILLE  
FARM SERVICE  
215-488-1025

**LEBANON**  
MARVIN J. HORST  
DAIRY EQUIPMENT  
717-272-0871

**McALISTERVILLE**  
SANER FARM  
SYSTEMS  
717-463-2606

**MILLERSBURG**  
LANDIS  
LABOR SAVERS  
717-692-4647

**MILTON**  
LANDIS FARMSTEAD  
AUTOMATION  
717-437-2375

**QUARRYVILLE**  
UNICORN FARM  
SERVICE  
JAMES E. LANDIS  
717-786-4158

**PIPERSVILLE**  
MOYER  
FARM SERVICE  
215-766-8675

**TERRE HILL**  
TERRE HILL  
SILO CO. INC.  
215-445-6736

**WILLIAMSBURG**  
LONGENECKERS, INC.  
814-793-3731

### MARYLAND DEALERS

**HAGERSTOWN, MD**  
TRI-STATE  
FARM AUTOMATION  
301-790-3698

**KENNEDYVILLE, MD**  
PINDER SERVICE CO  
301-348-5263

**LINEBORO, MD**  
WERTZ GARAGE, INC  
301-374-2672

**STREET, MD**  
P & S EQUIPMENT, INC  
301-452-8521

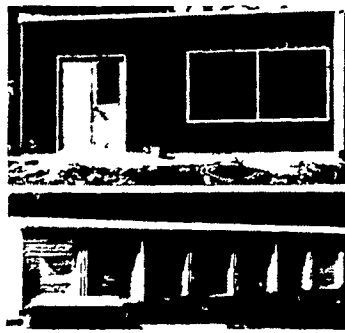


Enjoy with pride the value  
and the real convenience of  
**THE MILLER BUILDING, delivered  
complete and ready for use . . .**

The Miller Building is ready when you are — and can be delivered to your site and erected in just a few hours upon your own foundation. You save both time and money when compared with conventional or even masonry construction.

The uniqueness of The Miller Building is in the exceptionally strong internal construction. Not only does this allow for the added strength of siding materials, but it permits maximum use of all interior space — permitting the wide use and easy application of finished wall materials.

Besides the flexibility of modular units — allowing additions or easy relocation — erection is fast and simple, with no wait for a contractor.



Transportable Steel Buildings  
All Steel Unitized Construction  
Styrofoam Wall and Roof Insulation  
Attractive Bonded Finishes  
Aluminum Pass Door and Windows  
Complete Building Delivered to Site

Practical and Versatile Designs  
**TWO CAR GARAGE  
STORAGE BUILDING  
WAREHOUSE or WORKSHOP**

Uniquely constructed in two or more units, this steel molded building offers maximum strength with a very minimum of bulk. Strong, space saving walls will help control temperature changes, making the building easier to heat and cooler to use in summer.

For sales and service call  
717-866-2319  
717-866-5469

**J. MILLER BUILDINGS, Inc**  
P. O. BOX 171  
Myerstown R.D. 3, Pa. 17067