

Farm Calendar

Continued from Page A10)
 Flickinger will speak on feeding hay and silage. Delaware Vegetable and Potato Conference, Sheraton Inn, Dover, continues through January 30. State Horticulture meetings, Convention Center,

Hershey, continues through January 31. Sewing with Plaids clinic, 9:30 a.m., Hunterdon Co. Extension Center. Dauphin Co. COWAMP meeting, 7 p.m., Swatara Twp. Building. Garden Spot Young Farmers meeting, 7:30 p.m., Union

Grove School, topic will be ventilating barns with ducts.
Wednesday, January 30
 York Co. workshop, "The Incredible Crepe", 10 a.m., Pleasant Acres Meeting Room.
Thursday, January 31
 Sewage disposal seminar, 7 p.m., Penn State Fruit

Farm finance meeting

TERRE HILL — The Adult Farmer Program, Eastern Lancaster County School District will sponsor a Farm Finance Meeting on Wednesday evening,

February 6 at the Union Grove School.

The meeting will discuss many areas of farm finance and farm management as related to today's money market including: the short money supply, higher interest rates, the problems the higher rates are creating, hedging as a management tool to insure a profit, where does leasing fit the money management system today and the use of Market Reports in farm management.

Speakers for the evening will include: Ronald Bard, Federal Land Bank; Richard Hess, Commodity Broker, Shearson, Loeb, Rhodes; Fred Greenfield, Telmark Inc. Leasing; and Les Houck, Agri-Broadcasting System.

All interested persons are invited to attend the Farm Finance Meeting to be held at 7:30 p.m. on Wednesday evening February 6 in the Union Grove School.

For more information contact Bob Anderson at 215/445-5041.

one farm, from cows to cartons, is not governed by PMMB's maximum and minimum price regulations. Here again, though, any deviations and the special provisions are washed down the drain.

This exemption business is important for every jug milker to keep in mind when expansion thoughts start cropping up. It's best to have all the information and angles, and know the consequences before making too many financial and emotional commitments.

And, if you run out of indoor things to do on a snowy winter day, curl up with a copy of the Pa. Milk Marketing Law paperback. With any luck, you'll learn something you weren't sure of before you started reading, and it will help you get to sleep.

Research Lab, Biglerville.
 Town Meeting, 11:30 a.m., Encks, Baron, Stiegel Family Restaurant, Manheim.
 Farm and Home Foundation Meeting, 6:30 p.m., Lancaster Co. Farm and Home Center.



Brief answers to short questions

Sheila's Shorts

By Sheila Miller

Enterprising dairy farmers who are planning to operate an off-the-farm jug milk store in Pennsylvania need to acquaint themselves with the Commonwealth's Milk Marketing Law.

This regulation has a great bearing on whether it pays to expand and open new stores on land away from the home farm, or whether the business will have to stay confined within its boundaries.

The entire law, Act No. 294, amended July 31, 1968, fills 63 pages of a cream-colored Commonwealth paperback. The original act was passed by the state's General Assembly in 1937.

Along with the law, there is a milk marketing board. This board was set up to see that Pa. dairy farmers have an equal chance to market their milk, along with payment securities through bonding of milk dealers (a rather controversial subject at present).

This board is also interested in the consumer, and makes sure that the milk sold in the state is pure and wholesome, and is at a fair price.

All this seems to fall in line with the jug milk producer until Section 402. This section spells out which milk dealers or handlers can get exemptions and which ones can't.

Exemptions to what? The state licensing requirements. In Sect. 402 it states, "That in cash sales of milk to consumers, if he shall have produced all the milk on the farm where sold and such milk has at no time left the producers' farm prior to its sale to the consumer and he shall have neither purchased, handled, or received any milk from other producers or handlers for cash sale or any other purpose and his total sales to consumers do not exceed two gallons to any one consumer in any one day, the producer so selling milk shall be exempt from the provisions of this act."

In other words, the dairy farmer who puts up a jug milk store on his own farm, with the cows and the processing plant, is not required to be licensed with PMMB. Any deviations, and the exemption is lost.

Another section of the Act that gets involved with the jug milk operation is section 802, on prices. In small type, the law is defined to allow the milk marketing board to fix the minimum and maximum wholesale and retail prices to be charged for milk sold by any dealer in the state... "except for assumption at the store where sold."

This means that a jug milk operation located entirely on



Please send information on Fickes Master-Matic Silo System and Silage Master Silos

FICKES SILO COMPANY, INC.

P.O. Box 7
 Newville, PA 17241
 Phone: 717-776-3129



Stock Cherokee Trailers

Trailers Well Worth Their Cost.

Please send me information on: Fickes Silos

- Please send me color catalog on the Cherokee horse stock trailers and GN flatbeds.
- Please send me literature on Silo-Matic Feeding Systems.

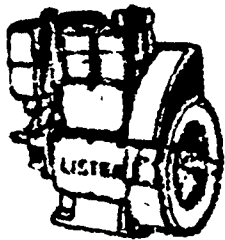
NAME _____
 ADDRESS _____
 CITY _____ STATE _____ ZIP _____
 PHONE _____

SMUCKER'S SALES & SERVICE

RD #2, BOX 21
 NEW HOLLAND, PA 17557

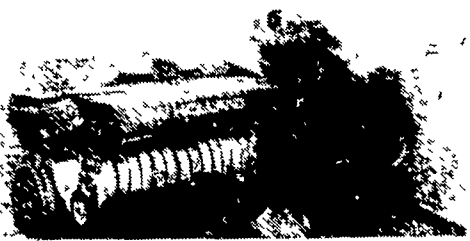
DISTRIBUTOR FOR:

LISTER, PERKINS & SLANZI DIESELS



• Good used diesel engines

• New Sputnik wheels and parts

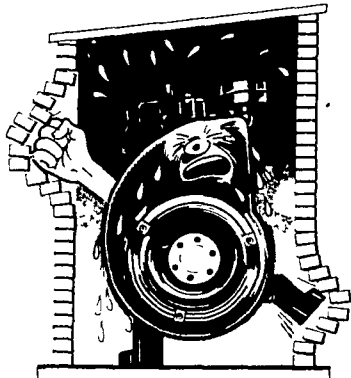


We mount diesels on balers, crimpers, cornpickers, etc.

Install a blower fan for better diesel & refrigeration cooling. Longer life on diesel.



LET ME BREATHE!



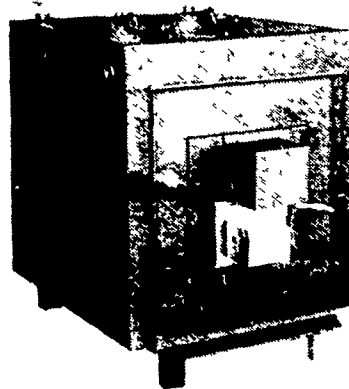
For lower cost per hour power, rely on



FOR PROMPT SERVICE CALL
 717-354-4158 OR IF NO ANSWER
 CALL 717-354-4374.

FARMERS! The WOOD BURNING BOILER MYSTERY IS SOLVED

The ESHLAND HOT WATER FURNACE adapts easily to hot water systems WITHOUT AFFECTING the EXISTING BOILER!



- Aquastat controlled automatic draft
- Large 40 gal tank surrounds firebox of 1/4" steel plate.
- Conservative rated at 100-120,000 BTU
- Firebox easily handled 26" wood
- Pressure tested in excess of 60lb PSI

HOT AIR UNITS ALSO AVAILABLE

DEALER INQUIRIES INVITED



CALL OR WRITE FOR FREE CATALOG
ESHLAND ENTERPRISES INC.

Box 23, Greencastle, Pennsylvania 17225 (717) 597-3858

Manufacturers of Boilers, Hot Air Furnaces Freestanding stoves, & Fireplace Inserts.