

# Lancaster Co. champs comment

## Now Is The Time

Continued from A10

beef are to register at the local ASC office between January 26 and February 6. Voting will take place later in February.

This time the order requires that 50% of those registering must vote, and the majority of those voting must favor the referendum.

This is a bit different than the referendum that was conducted and defeated in 1977.

We urge beef producers to study this program and participate in the registering and voting. It will be a much better indication of the desires of beef producers if a large number of folks participate in the program.

Take part and make your own opinions known.

### TO RECOGNIZE

#### FERTILIZER VALUES

Since the cost of commercial fertilizers seem to be on the rapid increase, other sources of fertilizer elements should be considered.

I'm thinking of farm manure and the value of legume sods in the crop rotation.

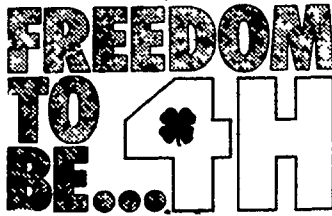
The 1980 Agronomy Guide gives a very good comparison of these fertilizer values.

With the amount of manure that is being applied to some of our livestock farms, it is quite possible that very little commercial fertilizer will be needed.

Alfalfa sod can add as much as 75 pounds of nitrogen per acre. This is one advantage to having legumes in the crop rotation.

A complete soil test will reveal the needs of each field. Then the needs can be provided by using farm manures, legume sods, or commercial fertilizer.

Careful handling and storage of manure will preserve many of these valuable fertilizer elements.



(Continued from Page A32) reserve grand champion swine.

The hog, a Spotted Poland China x Duroc crossbred, was Steve's FFA project.

Steve has been a member of the Cloister Chapter for

four years, and has always raised hogs as his projects.

In his last year in FFA, Steve was trying to match his older brother's record.

"My brother had the grand champion market hog in 1976. I decided it was thus

year or never to catch up with him, but I came up short," he said.

But Steve left the Farm Show with his first reserve championship and a nice sum of money from Hatfield Packing Co.

Steve said he is planning to put the money toward his goal of someday owning his own hog farm. He already has close to ten crossbred sows on his dad's farm near Ephrata.


Steve has also tried his

hand at showing sheep, mostly market wethers. But, he said, "I'd pick pork over lamb any day."

When asked if he had named his market hog, Steve concluded, "You name steers — I never bother naming hogs."



Barb Herr, Narvon, pinned a flower on her reserve champion light heavyweight Junior Market lamb's halter before putting him on the auction block to be sold.



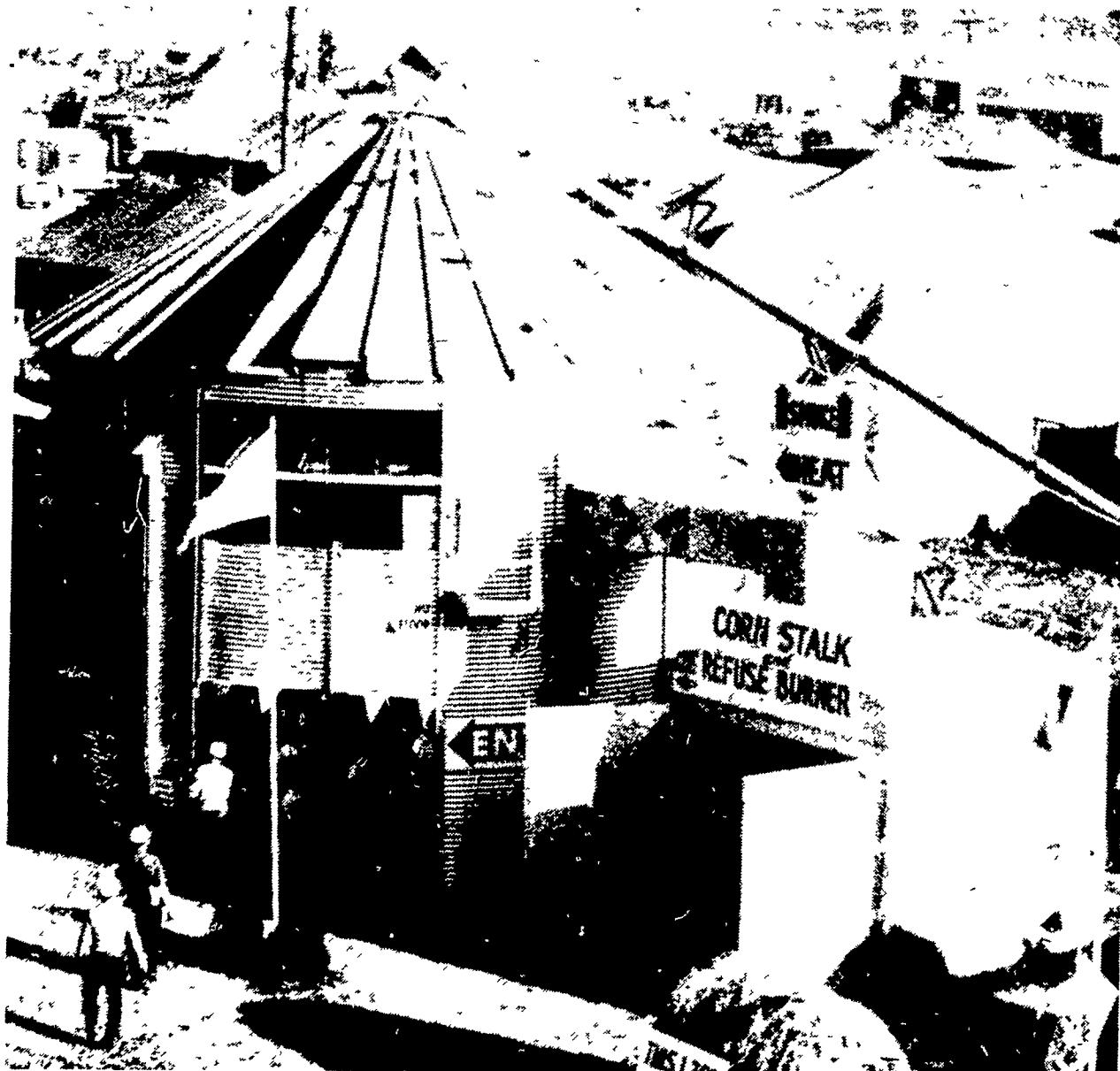
**2 COMPLETE WESTERN MARYLAND HERD DISPERSALS**

At Shady Lane Dairy Sales, 1/4 mile West of Quarryville, PA.  
**115 Head Registered & High Grade Holsteins**  
 Tuesday, January 29, 1980  
 11:30 A.M.

Watch next weeks paper for full ad  
 Shady Lane Dairy Sales  
**GLENN & DAVID FITE, Owners**



## Stormor Biomass Alternate Heat System Winter Discount Savings Available



This shows the Biomass Heat System installed on the Stormor E-ZEE-DRY.

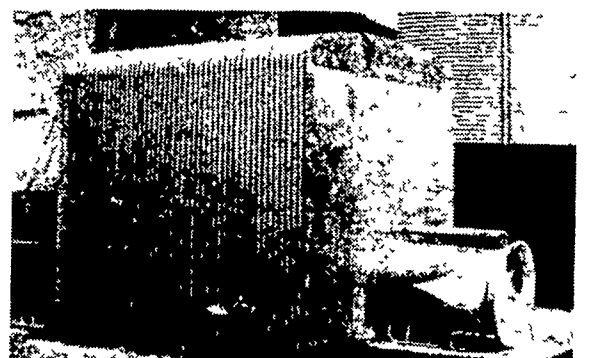
E-ZEE-DRY U.S. Patents 3,479,748 and 3,501,845 Foreign Patents Pending



This is the size of bale used in the Biomass system, the baled material is of your choosing.



Front view showing the large, wide doors where the bale is put in.



Rear view showing the fan connected to the Biomass System.

## LOUCKS GRAIN EQUIPMENT, INC.

Our Total Operation is Grain and Feed Handling Equipment  
RD 12, YORK, PA 17406 PH: 717-755-2868

★ RADIO DISPATCHED TRUCKS ★

### Your Grain Handling Headquarters for:

- Erection
- Service
- Millwright Work
- Crane Service

- Farm & Commercial Storage Bins
- Ezee-Dry Systems
- Channel-Loc Perforated Floors
- Wyatt Augers
- Baldor Motors
- Motomco Moisture Testers
- Batch Dryers
- York Bucket Elevators
- Winslow Truck Scales

Salesmen:  
**R. JAY KREIDER**  
Ephrata, PA 17522  
Home PH: 717-738-1527

**HARRY RESSLER**  
Quarryville, PA 17566  
Home Ph: 717-284-3208

We're Small Enough to be Concerned and Large Enough to Handle Any Size Grain Handling System