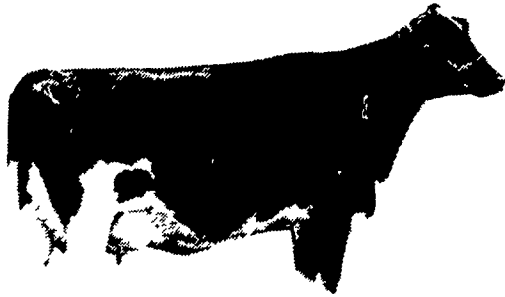


From Bou-Matic Technology...



**BOU-MATIC IS THE ONLY COMPANY THAT HAS DONE EXTENSIVE RESEARCH TO GIVE YOU THE MOST FOR YOUR MONEY IN BETTER MILKING.**



**TO BALANCE YOUR MILKING PROFITS, FIRST BALANCE YOUR MILKING SYSTEM.**

With our trained service technicians and the latest in testing equipment - **WE CAN SERVE YOU BETTER**

**LET US SHOW YOU WHAT BETTER MILKING MEANS...**

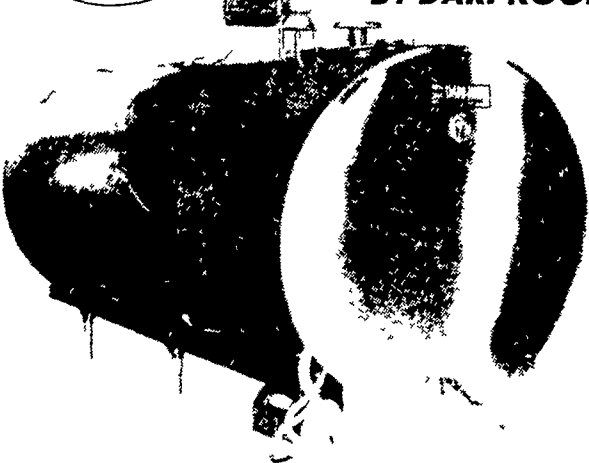
- ★ Better Milking means healthier udders
- ★ Better Milking means a better let down
- ★ Better Milking means a better milkout
- ★ Better Milking means higher butterfat test
- ★ Better Milking means more gentle milking at teat end
- ★ Better Milking means a Vented stretch Bore Liner
- ★ Better Milking means alternating pulsation for better massaging
- ★ Better Milking means a Lower Vacuum

**Better milking means more Profit which is yours.**

This is what Bou-Matic will do for you. Give us a call or drop us a line. We will be glad to have our Salesman give you a demonstration on better milking.

**24 HOUR REFRIGERATION SERVICE**  
★ WORK GUARANTEED ★

**THINKING...OF BUYING A MILK TANK? DON'T DELAY! - CONSIDER**  
**TEMP-MATIC**  
BY DARI-KOOL  
**The All New REFRIGERATION SYSTEM**



**Which Makes It The Number 1 Cooler!**

Featuring:

- Built-in recorder.
- No Problems with Interval times.
- Interval timer agitates milk 4 different times in one hour.
- Built-in warning system - A horn or light warning signal is given when milk temperature raises two degrees or when milk temperature drops to 34 degrees.
- Built-in automatic washer.

**USED TANKS**

800 gal. Jamesway	600 gal. Mueller	500 gal. Milkeeper	735 gal. Sunset
500 gal. Girton D-2	Hi-Perform	1000 gal. Dari-Kool	1000 gal. Sunset
D-2 400 gal. Girton	1250 gal. Mueller	500 gal. Dari-Kool	550 gal. Steinhorst
D-2 800 gal. Girton	600 gal. Mueller	Ice Bank	500 gal. DeLaval self
625 gal. Jamesway	1500 gal. Mueller w/	545 gal. Sunset	contained
	2 Compressors	625 gal. Sunset	Used Dumping Stations

**We Service All Makes Bulk Tanks**

• PLANNING LAYOUTS • SALES • INSTALLATION • SERVICE

**SHENK'S FARM SERVICE**

501 E. WOODS DRIVE, LITITZ, PA 17543  
PH: 717-626-1151

★ OUR SERVICE TRUCKS ARE RADIO DISPATCHED  
★ 24 HOUR SERVICE

After Business Hours Phone:

Paul Repine - 717-626-2837  
Mervin Nissley - 717-872-4565



Brief answers to short questions

**Sheila's Shorts**

By Sheila Miller

Now that Farm Show is over, it's hard to believe how fast that one week in January can fly by. Exhibitors and Farm Show managers are all ready looking toward the 1981 show. For anyone interested in participating in next year's largest show, here are some items to keep in mind.

For anyone who wants to show an animal, be it cattle, horses, sheep, or swine, the F.S. Commission has a limited time period for applying for entry. Normally, the County Extension agents are notified sometime around October that applications can be made. Notice also goes out to those people who exhibited in previous years, and the breed associations also find out when the sign up period begins.

Unfortunately, for those people who aren't in touch with their Extension office, breed association, or who never showed at the state's largest livestock show in year's past, finding out about the entry period is somewhat difficult. According to Charles Ible, Farm Show Director, they can call the commission office to get this information.

So, keep in mind, that next October is the time to get in touch if you want to have a chance at exhibiting an animal at the 1981 Farm Show. The time for sign-up is short, closing in November, so don't wait.

Once the Farm Show Commission accepts your application, it's time to check your health records to make sure your animals have the proper vaccinations and identification. The requirements vary for each type of animal, and there are minimum time periods before the show in which these shots have to be administered. The best check to insure that you have met all the requirements is to refer to the F.S. Premium List. This book spells out what is needed and by when.

Purebred animals need to have their registration certificates ready and with them throughout the show week. Show officials check

time before assigning the show cards to the exhibitors.

When you bring your animals to the Farm Show building, either Friday or Saturday before the Show begins, an official of the state will be there to check them in. They will make sure the health papers are in order and the identification tags check out with their records. This is a protection for the exhibitors to make sure no animals are permitted into the barns with any health problems, and that the animals can be easily identified if they should get "lost".

And, before leaving the Farm Show on Friday afternoon, the exhibitor must get a dismissal slip from the Commission. Again, the state officials will be checking to make sure all the paperwork is complete.

During the week, the exhibitor has to keep the area around his entry's assigned space in clean order, so you had better be sure to take along a broom and a shovel. If you don't keep your "house" clean, the state will do it for you, for a set fee, of course.

It's a good idea to mark all of your equipment so that it can be easily identified. It seems that some brooms, forks, and shovels, along with brushes and combs gain the ability to walk away during the week long event.

And, stock up on a good sense of humor and a lot of patients and good sportsmanship. It's a trying week, and nerve-ends become frazzled with spectator crowds and pre-show jitters. But if you wear a smile and practice courtesy to everyone, you can come through the week with new friends and good memories.



**LIQUID PLANT FOOD**

**9-18-9 Starter**

**10-7-7 Foliar Feed**

**ALPINE**

- Balanced formula of trace elements
- Immediate availability of nutrients
- A neutral chlorine free product will not rust or corrode equipment

January Base Price

\$2.45 Delivered  
Volume Discounts

**MERVIN M. KREIDER**

Frystown, Pa.  
717-933-8943