

Sale

Continued from Page A28

Hatfield Packing Co. placed the highest bid for these animals for the past several years, and this year

was no exception. They were tops with a bid of \$1.50 over the sale day's St. Louis market.

Julie Kuzemchak, Centre County, sold her grand and reserve grand champion market lambs for \$22 a

pound and \$10.50 a pound respectively.

Buying the grand champion lamb was Bill Fox of Fox's Market in Middletown. Jim Bierly, owner of Bierly's Meat Market in State College, purchased the

reserve champion lamb.

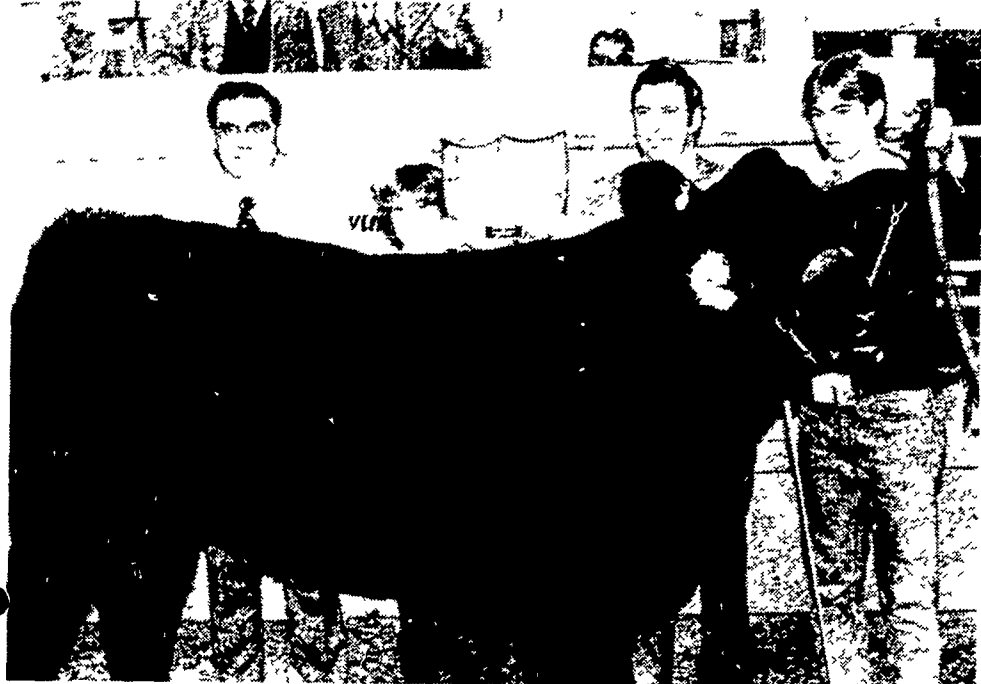
A total of 88 lambs were auctioned off for an average price of \$1.35 per pound. The average weight for the market lambs was 109 pounds.

The top buyer at the Farm Show sale was Acme Markets, Philadelphia, with \$16,973.55. Running a close second was Arbogast & Bastian, Inc., Allentown, totalling \$15,779.80.

Almost tied for third and fourth high buyers were Konhaus Farms, Mechanicsburg at \$13,549.50 and Hatfield Packing Co., Hatfield, with \$12,795.10.

The following is a list of buyers from the Friday Farm Show sale:

Esskay Baltimore MD, Hatfield Packing Company Hatfield Arbogast & Bastian Inc Allentown Penn Packing Company Philadelphia, Acme Markets Inc Philadelphia Leo Brothers Sun nyhill Farms Rutherford Heights University of Connecticut, Storrs CT T M Landis Mainland Acme Markets Inc Greencastle Walter M Dunlap & Sons Lancaster, Donald Templeton Eben sburg Bierly's Meat Market, State College Godfrey Brothers York, John E Martin, Elizabethtown Baum's Bologna, Elizabethtown, William Smith Seven Valleys, Richard L Beck & Sons, Seven Valleys Melvin Kolb Inc Lancaster Lancaster Farming Newspaper Lan



This Herr's reserve grand champion steer, Houston, wore a flower on his halter on his trip through the sale ring. The big, black steer sold to Acme Markets, Inc. of Philadelphia for a pretty sum of \$3.35 a pound.

Lancaster Farming, Saturday, January 19, 1980—A29

caster, Groff's Home Dressed Meats Elizabethtown Pottiger Home Dressed Meats New Kingston Hemlock Hill Farm Peekskill NY Turkey Hill Farm East Earl Latella & Sons West Haven CT Sum merdell Farm Mansfield Ike Weaver Ephrata, Kilmer's Kountry Meats Myerstown Hale Food Rite

Halifax J H Glick, Reedsville, Scheidel Markets Pottstown, Country Butcher Shop Carlisle, Keister's Auction Sales, Inc Middleburg, Konhaus Farms Mechanicsburg New Holland Stables New Holland Vintage Sale Stables, Paradise, Fox's Market Middletown, (Turn to Page A32)



The reserve grand champion Junior Market lamb went to Bierly's Meat Market, State College. Pictured are: Jim Bierly, owner; Julie Kuzemchak; and Chet Heim, Pa. Deputy Secretary of Agriculture.

AGWAY



THIS CALF HAS SCOURS, BUT DEHYDRATION WILL KILL IT!

PROMPT, EFFECTIVE REHYDRATION WITH VY'TRATE™ COULD SAVE IT!

Special Introductory Offer!

SAVE \$1.00 A BOX

VY'TRATE has been specially developed to overcome the severe dehydration that usually accompanies scours

While antibiotics and sulfas can control the bacterial source of scours they cannot replace lost body fluids or contribute to fluid absorption through the damaged gut

Vy Trate enables scouring calves to quickly replace large amounts of vital body fluids and essential nutrients

Just add one pack of Vy Trate to two quarts warm water and use it as a substitute for milk or milk replacer. Dissolves readily and calves love it. Compatible with antibiotics and sulfas.

Always read and follow label directions carefully



ATTEND JOHN DEERE FARMING FRONTIERS

Come see the year's most exciting farm film program. Learn about 33-to 80-hp John Deere Tractors, new disks, new plows, new field cultivators and more. Watch an animated film on combine safety. See Furrow-on-Film subjects selected especially for this area. Be sure to come to our 1980 Farming Frontiers event!



**John Deere Parts Special
10% DISCOUNT
February 4 - 9**

Two Complete Shows - 10:00 A.M. & 1:00 P.M.
Monday, February 4, 1980
Farm & Home Center
1383 Arcadia Rd.
Lancaster, Pa.
Lunch will be served at 12:00 Noon
Door Prizes

LANDIS BROS., INC.
1305 Manheim Pike, Lancaster, PA 17601
PH: 717-291-1046