



Hatfield Packing also bought the reserve grand champion Junior Market swine from Lancaster County's Steve Strauss. Pictured with Steve, from left, are Jerry Clemens and Ezra Good, Hatfield Packing Co.; and J. Luther Snyder, Pa. Deputy Secretary of Agriculture.



Ernie Frey, Quarryville, sold his grand champion Junior Market steer, Roadrunner, to Danny George, Bethlehem, for a record-breaking price. The half-ton steer was a Lancaster County-grown Angus x Chianina crossbred.

## Sale

(Continued from Page A27)

steer for \$3.35 a pound. Once again, this price beat last year's record by a dime.

The bidding, which started at 2 p.m., went on until all of the 125 head of market steers had been sold. The average price paid for the animals came to slightly over 91 cents a pound, with the average weight of the steers equalling 1172 pounds.

The grand champion market hog that started the

day's sales went to Hatfield Packing Co., Hatfield.

Donald Sheiss' full-blooded Duroc brought \$17 per pound, \$2 short of last year's record.

Following Donald's grand champion through the sale ring was the reserve grand champion hog owned by Steve Strauss, Lancaster. Steve's crossbred Spotted x Duroc, also sold to Hatfield Packing Co. for \$850 a pound.

There were 91 swine auctioned off on Friday morning, with an average

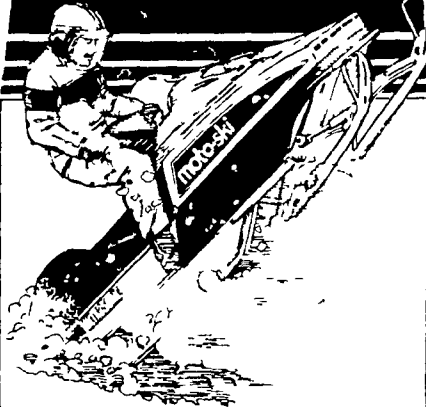
price of \$1.14 a pound. Their average weight was 213 pounds.

Farm Show's Charles I. pointed out the 91 animals sold through the sale ring were only half of the 180 hogs in the junior show.

He said each child nominated one of their animals to be sold at the auction. The other animals that were either underweight, overweight, or placed low in the show, were sold directly to a slaughter plant.

(Turn to Page A29)

## Action all the way



### Moto-Ski® ULTRA SONIC\*

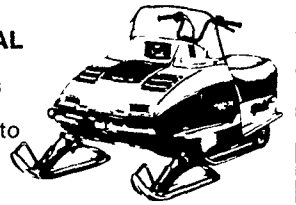
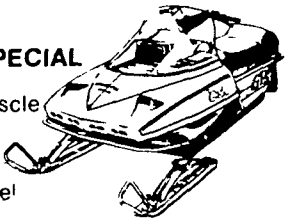
It's one flat-out power machine with 436.6 cm<sup>3</sup> liquid-cooled engine and more

### Moto-Ski GRAND PRIX\* SPECIAL

There's enough muscle in that piston-powered power plant to blast this sled clear across the lake!

### Moto-Ski MIRAGE\* SPECIAL

It's all new—and it's one very hot iron. Packed with power to move you out fast. At a very cool price.



## B & B SALES & SERVICE

285 S. Reading Road  
Ephrata, PA 17522

717-733-4864

\*Trademarks of Bombardier Inc. All rights reserved.



# moto-ski®

## Need a farm loan? Bob Badger is the friend to see!

There are no two ways about it — everybody feels more comfortable borrowing from a friend. That's why so many area farmers take their needs to Bob Badger — head of the Agricultural Loan Division of the First National Bank of Strasburg.

Bob is a true friend to farmers. An area native, he grew up among them — and still lives among them today, in southern Lancaster County. He's vitally interested in helping them solve their complex money problems. He's always ready to provide experienced, financial counsel. And he's more than happy to use the Friendly First's flexible payment schedules to tailor each loan to the farmer's specific requirements.

So whatever your needs may be — operating capital, livestock, machinery, construction, farm mortgages or estate planning — make it a point to talk with Bob Badger. Because when it comes to a farm loan, he's the best friend you could ask for!

THE AGRICULTURAL LOAN DIVISION OF  
**The Friendly First**  
THE FIRST NATIONAL BANK OF STRASBURG  
Lancaster County's Oldest National Bank

MEMBER FDIC

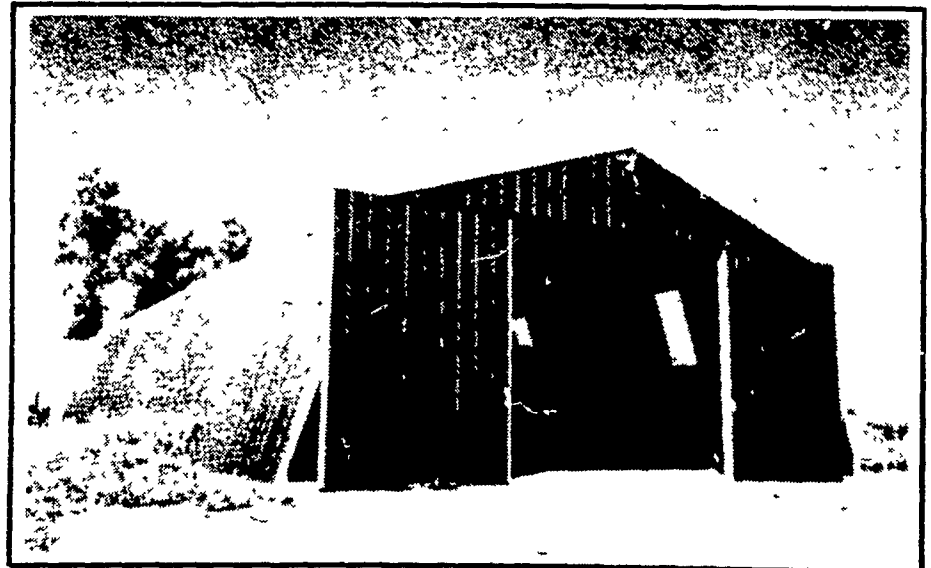


## NEE-LEE Corporation

- FARM BUILDINGS
- COMMERCIAL BUILDINGS
- INDUSTRIAL BUILDINGS

Unlimited  
Structural Design

Pre-engineered  
Steel Buildings



AUTHORIZED DEALER:

## ZINN BUILDERS, INC.

1408 Marene Drive  
Harrisburg, PA 17109  
717-545-0231