

## MacCauley dominates Jr. Breeding Sheep show

HARRISBURG — William MacCauley dominated the Junior Breeding Sheep show at last week's Farm Show. The young man, who lives just outside of Lancaster County in Atglen, took champion and reserve champion in the Suffolk class.

Two young women from Lancaster County also brought home champion honors. Barb Herr, Narvon, showed the champion Dorset ewe, while Sara Lynn Brubaker, Lancaster, exhibited the champion Hampshire ewe.

Complete show results are as follows:

### JR BREEDING SHEEP

#### Cheviot

#### Yearling Ewe

1 & 3 Teresa Fink R2 Slatington 2 & 4 Jeff Mellott Needmore

#### Ewe Lamb

1 & 4 Jeff Mellott R1 Needmore 2 & 3 Teresa Fink R2 Slatington

#### Ewe

1 Teresa Fink R2 Slatington

#### Reserve Champion Ewe

1 Jeff Mellott R1 Needmore

#### Yearling Ewe

1 Margaret Herr R2 Narvon 2 & 3 Barbara Herr R2 Narvon 4 Eric Kreider R1 Palmyra 5 Laurie Dobrosky R2 Glen Rock

#### Ewe Lamb

1 & 5 Barbara Herr, R2 Narvon 2 & 3 John R Sevick R1 Pa Furnace 4 Margaret Herr R2 Narvon

#### Champion Ewe

1 Barbara Herr R2 Narvon

#### Champion Ewe

1 John R Sevick R1 Pa Furnace

#### Hampshire

#### Yearling Ewe

1 & 3 David G Lytle New London 2 Sarah Lynn Brubaker Lancaster 4 Ann Baron Downingtown

#### Ewe Lamb

1 Sarah Lynn Brubaker 2 & 3 David G Lytle New London

#### Champion Ewe

1 Sarah Lynn Brubaker Lancaster

#### Reserve Champion Ewe

1 David G Lytle New London

#### Shropshire

#### Yearling Ewe

1 & 3 David L Harpster Boalsburg 2 David Schultz R1 Nazareth

#### Ewe Lamb

1 Steven W Calvert R1 Berlin 2 & 4 David L Harpster Boalsburg 3 & 5 Ernest Barrett R1 Cochranville

#### Champion Ewe

1 Steven Calvert R1 Berlin

#### Reserve Champion Ewe

1 David L Harpster Boalsburg

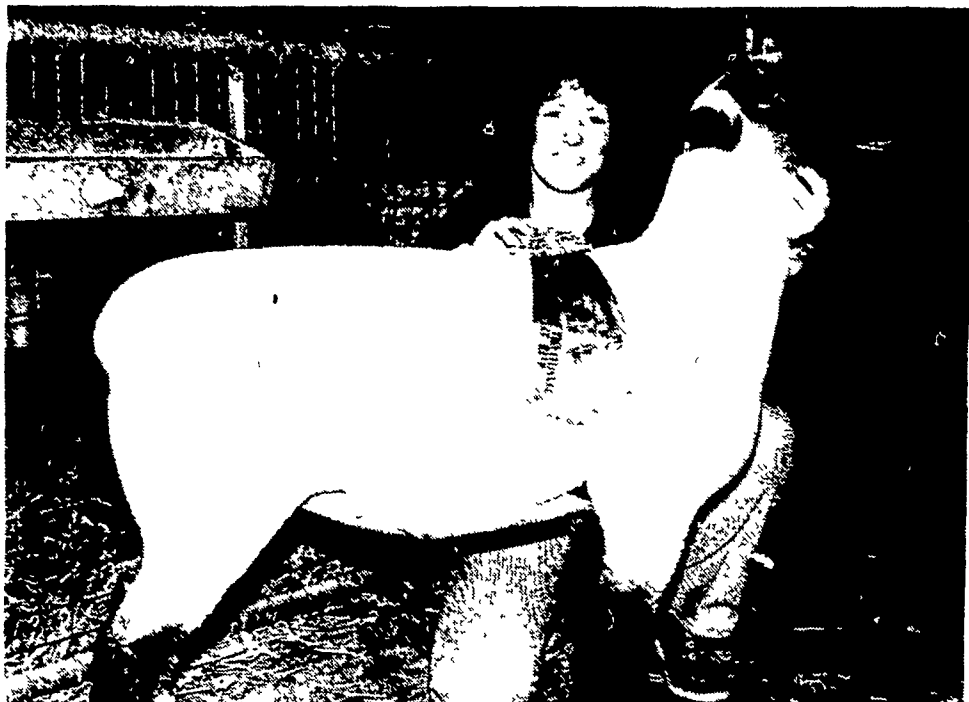
#### Southdown

#### Ewe Lamb

1 Barbara Rohrer R1 Quarryville 2 & 3 Gary Kwisnek R1 Clarksburg 4 & 5 Gerald W Rohrer R1 Quarryville

#### Yearling Ewe

1 & 2 Gary Kwisnek R1 Clarksburg 3



Sarah Brubaker exhibited the grand champion ewe of the Hampshire breed during the State Farm Show's junior breeding show. This was the second consecutive year Sarah earned these honors.

Michele L Bankert R3 Red Lion 4 Jeff Calvert R1 Berlin 5 Nanette K Musser Lancaster

#### Suffolk

#### Yearling Ewe

1 & 2 William MacCauley 3rd R1 Atglen 3 & 5 Troy A Ness R1 Dallastown 5 James Stauffer Lancaster

#### Ewe Lamb

1 William MacCauley R1 Atglen Reserve Champion Ewe

1 William MacCauley 3rd R1 Atglen

## Tobacco meeting set for January 23

TERRE HILL — A Tobacco Management Meeting will be sponsored by the Eastern Lancaster County School District Adult Farmer Program on Wednesday evening January 23 at the Union Grove School.

Speakers for the evening will include Jerry Schog, Tobacco Research, U.S.D.A., Beltsville, Maryland; and John Yocum, Director Southeast Research Farm, Penn State University.

Topics that will be discussed will include Blue Mold, a disease which destroyed 15 per cent of the Pennsylvania tobacco crop; other tobacco diseases, and what is being

done to control them; and new Herbicides which will be available to tobacco growers this year.

Slides will be shown of a Ridomil test plot in the New Holland area which did an excellent job of controlling Blue Mold. Ridomil is a Fungicide manufactured by Ciba Geigy and should be available for use this year.

The meeting will be held at the Union Grove School

which is located two miles north of Route 23 on Route 625.

Starting time is 7:30 p.m. All interested persons are invited to attend.

The U.S. has provided Iran with 80 percent of its wheat, 25 percent of its feed grain, 70 percent of its vegetable oil and rice and 100 percent of its soybean oil cake and meal imports.

# Martin LESTONE

Apply lime often for best results

To keep your soil neutral liming every 2 or 3 years is recommended because of the new higher analysis fertilizers being used today

MARTIN LESTONE, INC.  
Blue Ball Pa 354 4125  
Gap Pa 442 4148

## ATTENTION FARMERS... FREE ESTIMATES ON RODENT CONTROL

RODENTS carry diseases which can endanger the health of your flocks. Your business is raising the flocks. Ours is protecting them.

1278 Loop Rd.  
Lancaster, Pa. 17604  
717-397-3721

## BALE BEDDING-CHOPPER

- ★ Simple to run
- ★ Highly Efficient
- ★ Easily handled

Use For:

- Chopping litter for cattle, whether kept tied up or in free stalling.
- In hen houses to provide litter to replace conventional bedding.

In Strawberry Farms for spreading the straw between rows.

FEATURES:

Motor	Gas 5 HP, 7 HP, 4-stroke, Electric 3 HP Battery
Frame	Steel
Emptying	6' to 8'
Wheels	16" diameter pneumatic
Capacity	1 bale/minute
Dimensions	31" width — 50" length
Weight	460 lb
Guarantee	One year on all parts except blades

LET US SHOW YOU WHAT THE BEDDING CHOPPER CAN DO

# PAUL HORNING

RD1, Stevens, PA 17578  
PH: (215) 267-7208

Other Wic Products Available:  
★ Motorized Sweeper  
★ Motorized Silage Wagon  
★ Motorized Feed Wagon

# NEED A TRUCK?

We rent trucks of all sizes... from pick-ups and Econolines to vans, stake body and dump trucks. So whenever you need a truck — or any kind of equipment —

## See Us First. WE'VE GOT WHAT YOU NEED

**Reading Rentals** 12th & Spring Sts Reading, PA 19604 376-3896

**AceRents** 720 N Prince St Lancaster PA 17603 393-1701

**RENTALS UNLIMITED** 940 Cornwall Road Lebanon PA 17042 272-4658