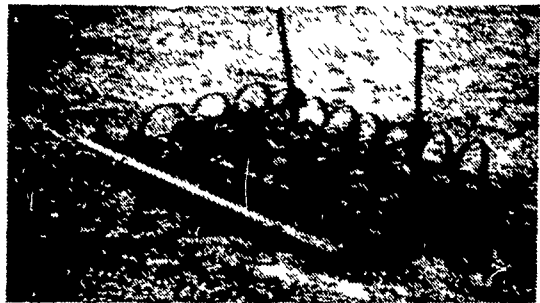


FARM EQUIPMENT

FARM EQUIPMENT

NEW SPRING HARROWS

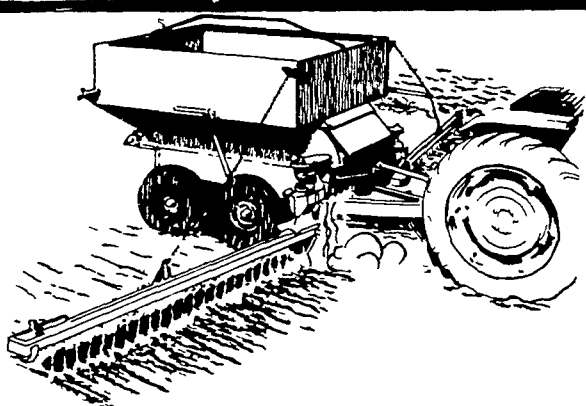
8' 9' 10' 12' Wide
2 holes in spring tooth for replaceable points
Replaceable runner soles



\$10.00 off if cash paid in January

LITTLE BRITIAN WELDING SHOP

Amos N. Stoltzfus
RD #2 Box 218
Nottingham, Pa. 19362
For information or delivery call L. D. Wood
215-932-3141
before 6 AM or after 6 PM



STOLTZFUS DRY LIME & FERTILIZER SPREADER

Most accurate spreading available.
Truck mount or tractor drawn.
Distributors for the complete Willmar line
spreaders, teners, bucket loaders, etc.
We stock spreaders and parts.

C.U. STOLTZFUS MFG. INC.

Morgantown, Pa. 19543
Ph: 215-286-5146



John Deere design,
dependability,
and dealers
make the difference



USED EQUIPMENT

TRACTORS

JD 4430 sound guard
body, htr, air, quad
range
730 JD diesel
630 JD gas
JD 3010 RC diesel
JD 50 w/cultivators
IHC 1256 Turbo dual
remote, PTO w/e
IHC 460
Case 210 Ind w/hyd
loader
IHC Super C

COMBINES

MF 300, gas, cab, 13' plat
form, 3-row 38"

SPREADERS

NI 218 single beater w/up
per beater attach
ment

NEW EQUIPMENT

New Tractors
JD 1050
JD 950
JD 850

DISC HARROWS

JD KBA 28 regular
JD KBA 28 transport
JD 7802 offset 20 blade

**USED NEW IDEA
UNI EQUIPMENT**

705 Diesel power unit
w/710 combine & 13'
head
702 gas V6 power unit
with 727 husking unit
& 725 3RN head

NEW SPREADERS

NI 213 - 165 bu
NI 214 205 bu
NI 244 318 bu tandem
axle
NI 245 365 bu tandem
axle
All with single beaters &
upper beater attach
w/hydraulic endgate
attachments available
JD model 34 150 bu
JD model 54 230 bu
JD model 660 300 bu
tandem axle
JD model 680 400 bu
tandem axle
All with single beaters &
upper beater attach
w/hydraulic endgate
attachments available

LANDIS BROS., INC.

1305 Manheim Pike
Lancaster, PA 17601
717-291-1046

FARM EQUIPMENT

FARM EQUIPMENT



**Introducing The New
Briggs & Stratton I/C
Series Engine**

Specially Designed For
Industrial/Commercial Applications

STANDARD FEATURES INCLUDE

- ★ Cast Iron Cylinder Sleeve
- ★ Ball Bearings on both ends of Crankshaft
- ★ Stellite Exhaust Valve & Rotator
- ★ Dual Element Air Cleaner
- ★ Quiet Lo-Tone Muffler with Spark Arrester
- ★ Extended Oil Fill and Dipstick
- ★ Mounting Base same as standard engine

Available in 3, 5 & 8 HP with Choice
of 4 Crankshafts for Pump,
Generator, Reduction Gear and
Std. Keyway.

FISHER ENGINE SERVICE

3141 Old Phila. Pike, Bird-In-Hand, PA 17505
Authorized Service Center



NEW EQUIPMENT IN STOCK

- | | |
|---------------------------------|-------------------|
| MF 245 diesel tractor | MF 33 grain drill |
| MF 275 diesel tractor, 8
sp. | Balers |
| MF 205-4 tractor | Chisel plows |
| MF 760 diesel combine | Rakes |
| hydro, 540V8 | Drag Harrows |
| MF 550 diesel combine | Transport harrows |
| MF 468 planter | Grinder mixer |
| | M&W grain dryer |
| | Snow blower |

JANUARY CLEARANCE

OVERSTOCKED INVENTORY
SPECIAL DISCOUNT ON NEW
& USED EQUIPMENT
FREE FINANCING

USED EQUIPMENT

- | | |
|---|---|
| MF 245 gas tractor
w/235 loader | MF 410 diesel combine
w/quick attach. |
| Oliver 550 gas tractor | MF 760 combine w/63
corn head 15 ft table,
used 1 season. |
| Ferguson TO 30 tractor | NI 702 Uni System w/710
combine w/corn
head & table |
| MF 285 tractor
w/loader, 1 yr. old | NH crop choppers |
| MF 135 Gas tractor | NH haybines |
| 2 MH 44 tractors | Balers |
| MF 85 tractor | Disc harrows |
| MF 510 gas combine w/
quick attach. | Plows |
| 1977 MF 300 combine | Forage harvesters |
| MH 80 combine, 2 row
head, 12 ft. grain
table | NH 1010 bale wagon |

JANUARY SPECIAL

10% OFF ON PARTS & OIL

FULL LINE OF EQUIPMENT AVAILABLE

**WE HAVE HUSQVARNA POWER
SAWS 3 MODELS**

**ABRACZINSKA'S
Farm Equipment, Inc.**

RD 1, Catawissa, PA.
717-356-2323
(south on Rt. 42)

FARM EQUIPMENT

FARM EQUIPMENT



**USED
EQUIPMENT**

COMING NEXT WEEK

A C 7050 Tractor, fully equipped, perfect
JD 220 18 ft. Fold-up Disc, like new

- Case 730 Diesel, Case-O-Matic, Comfort King
- 1975 Case 1070 w/1100 hours, Cab & Air
- IH Row Crop 574 Diesel w/85 hours
- 1466 Farmall w/cab
- JD 3020 Diesel, side console
- JD 4020 Gas Tractor **SOLD**
- 1972 JD 4020, Power Shift Dies **SOLD**
- Farmall 706 Diesel
- Farmall 706 Gas w/c **SOLD**
- Farmall Super M
- Farmall 230 w/fast hitch
- Case 930 Comfort King, Standard Tread
- NI 7 ft. cutditioner, good
- Lots of Front and Rear IH Weights

RAYMOND B. LEAMAN

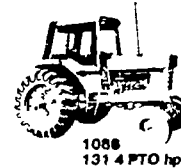
Willow Street RD 1, Ph: Lancaster 464-2778
Midway between Lancaster & Quarryville
off Rt. 222 take Brenneman Road
at Graybill Bros. Garage, Refton.



**M & R
EQUIPMENT, INC.**

New Park, PA
4 mi. S. of Stewartstown, PA
Ph: 717-993-2511

- Red Lion, York, Brogue, Loganville -
Ph: 246-1972
Residence 301-452-8693 after 6 P.M.



1086
131 4 PTO hp



986
105 6 PTO hp

**MANY WAIVER OF FINANCE
PROGRAMS HAVE JUST
BEEN ANNOUNCED! AVOID
PRICE INCREASES!
USE YOUR CAPITAL FOR
OTHER PURPOSES!**

NEW EQUIPMENT

- | | |
|---|-----------------------------------|
| (1) 986 w/cab, air, diff lock
686 D | (2) 435 balers
510 plow, 4x16" |
| (1) 584 D row crop | 510 plow, 3x16" |
| (2) 484 D utility | 110 F boxes w/tandem
gear |
| 490 disc, self-leveling
wing type, 21' | 510 drill, 16x7 plain |
| 475 disc, 13'10" | 510 drill, 18x7 combina-
tion |
| 475 disc, 17'5" | 55 10' trailing chisel |
| 720 plow, 5x20" | |
| 720 plow, 5x18" | |

Complete line of IH 2250 Loaders
Many New Cub Cadets 'Old Prices!

**NEW EQUIPMENT SPECIALS
UNBEATABLE DEALS!!**

IH 510 grain drill, 18 x 7 combination, hillside tires, rear
mounted grass seeder, double disc openers
\$4100

Waiver of finance until 4-1-80

IH 4130 Skid Loader w/52" Material Bucket,
Oversized Tires
\$7650

NOW IS THE TIME TO SAVE!
WE ARE WELL STOCKED WITH PLOW PARTS

**ASK US ABOUT B.F. GOODRICH RADIAL TRACTOR
TIRES! LONGER WEAR, LESS SLIPPAGE, MORE
USABLE HORSE POWER & SAVE FUEL - YOU CAN'T
AFFORD NOT TO USE RADIALS!!**

USED EQUIPMENT

- 706 D w/3 pt hitch, new sleeves, pistons
- 213 New Idea manure spreader, nice
- Leland 154 tractor, 30 h p, 3 pt, like new
- IH 2400A diesel tractor, 3 pt w/6 way industrial blade
- IH 234 picker nice



- IH 2000 loader nice
- NH #27 blower, nice
- JD 34 harvester w/1 row head, hay pickup
- NI 279 cutditioner, new rotor, like new
- IH 700 auto reset plow 5 x 16'
- JD 1600 chisel like new, 10'
- 314 sheller for NI pull type picker, exc cond
- MF flail chopper fair cond

