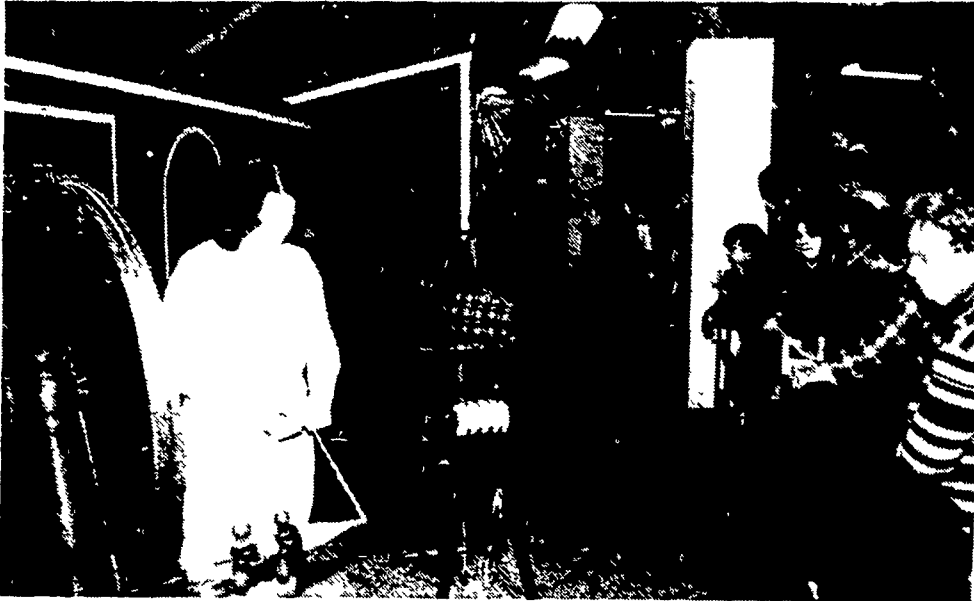


Schwartz wins potato title

HARRISBURG — Chester Schwartz of Hegins, Schuylkill County, won the grand championship in open class potato judging competition at the 64th Farm Show. His entry was a Norland variety. Jeffrey Schwartz, also of Hegins, showed the grand champion in vocational agriculture classes, the Superior variety.

The heaviest potato, weighing 2 pounds, 12 ounces, was exhibited by Nevin W. Reitz of Schnecksville, Lehigh County.

Farm Show scenes



The Farm Museum of Landis Valley, Lancaster County, put on several craft demonstrations including this one on spinning wool.



Matt A. Haist, Ivyland flower grower, was among six farmers to receive the Master Farmer award at Tuesday afternoon's banquet. Making the presentation is John Kimbark, Pennsylvania Farmer, as Mrs. Haist looks on.

Food Competition

(Continued from Page B9)

Judy Meck 4 Mrs. Roy Mull 5 Mrs. Myrtle Lefever

Preserves Any Fruit
1 Mrs. Myrtle Lefever 2 Mrs. Roy Mull 3 Mildred Benedict 4 Mrs. Harry Heim 5 Pearl Barron

Yeast Bread and Cakes
White
1 Mrs. Nelson Smith R1 Lewistown 2 Pearl Barron 3 Debra Wenger 5 Orange St. Litzitz 4 Marion Welsh R2 Clarks Summit 5 Jill Kupsky R3 Benton

Whole Wheat
1 Betty Ames R2 Clarks Summit 2 Lori Fry York Vo-Tech 3 Stacey Fenggish York Vo-Tech 4 Sharrn Kopp York Vo-Tech 5 Mrs. Nelson Smith

Yeast Rolls

White
1 Mrs. Merle Mishler 2 Lisa McIntrye York Vo-Tech 3 Melissa Anderson York Vo-Tech 4 Carol Yinger York Vo-Tech 5 Diane Hawkes York Vo-Tech

Whole Wheat
1 Mrs. Nelson Smith 2 Betty Ames 4 Louise Stiglitz R2 Franklin 5 Mrs. Edward Daughtery R1 Rome

Butter Cake Layer (iced)
White
1 Mrs. G. W. Huntsberger R1 Etners 2 Mrs. Howard Schwenk R4 Lebanon

Yellow
1 Betty Ames 2 Mrs. Wilbur Kulp Sunrise Ave Lancaster

Chocolate
1 Mrs. Wilbur Kulp 2 Penny Harman York Vo-Tech 3 Mrs. G. W. Huntsberger 4 Mrs. Roy Mull 5 Betty Ames

Sponge Cake (not iced)
White (angel)
1 Mrs. Roy Mull 2 Pearl Barron 4 Mrs. John Marsteller Jr. R3 Stewartstown 5 Faith Peterson Abbottstown

Yellow (without liquid)
1 Julia Slothour R2 York Springs 2 Mrs. Howard Schwenk 3 Pearl Barron

4 Mrs. Edward Daughtery 5 Mrs. Roy Mull

Yellow (with liquid)
1 Julia Slothour 4 Mrs. Roy Mull
Cake Made With Oil
Plain Yellow (not iced)
1 Pearl Barron 2 Julia Slothour 3 Mrs. Wilbur Kulp 3 Mrs. Howard Schwenk

HARRISBURG — The judging is over and the prizes awarded for canned fruits and vegetables at the 64th Pennsylvania Farm Show.

Judith Pheil, Chambersburg, who has judged these products at the Farm Show for more than 40 years, says that this year's entries were unusually excellent.

She attributed this to more

education on the part of farm organizations and more interest on the part of consumers.

They want to take advantage of the savings that can result from canning food, but the also want their products to be flavorful and above all, safe to eat. The more they learn, the more successful their results, she notes.

PIONEER BRAND ALFALFA FOR... LONG TERM STANDS

That's what you get with Pioneer brand "purebred" alfalfa. You put them down and they keep coming up year after year after year. And with the time, effort and money it takes to establish an alfalfa field, it's nice to know you won't have to do it as often. And the latest university yield tests prove it.

Where long term stands were measured Pioneer brand alfalfa consistently ranked at or near the top in tons per acre. In Michigan, Pioneer brand 520 ranked first among 36 entries in average yield over a nine-year period — four cuts a year since 1969. It was second in five-year tests.

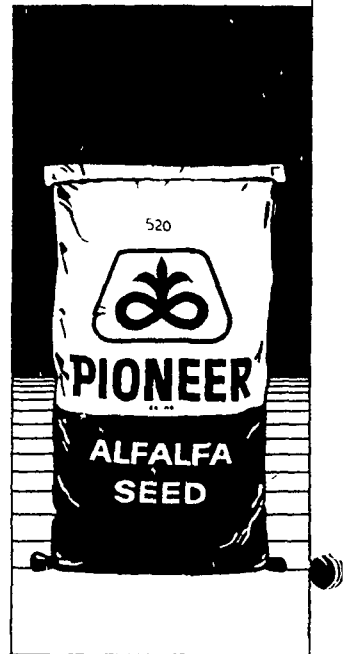
At Shabbona, Illinois, Pioneer variety 524 ranked first for the 1975-78 seasons and also tops among 35 entries on a 1977 seeding.

In a five-year average at Rosemount, Minnesota, our 520 ranked second. From 1977 seedings, our 524 and 531 ranked first and fourth.

At Concord, Nebraska, 520 ranked second among 35 entries in tons per acre of 1977 seeding.

And so it goes. We're not always number one. But Pioneer varieties are consistently among the leaders. Year after year after year.

See your Pioneer salesman. He'll help pick the best alfalfa for you.



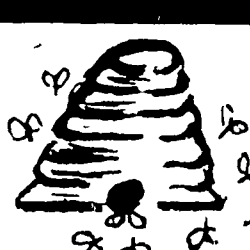
PIONEER
BRAND ALFALFA SEED

PIONEER HI-BRED INTERNATIONAL, INC. EASTERN DIVISION TIPTON INDIANA 46072

The Limitation of Warranty and remedy appearing on the label is part of the terms of sale. Pioneer is a brand name, numbers identify varieties. *Registered trademark of Pioneer Hi-Bred International, Inc., Des Moines, Iowa, U.S.A.



Rose Arnold of Lebanon shakes hands with Eggatha the Queen of Eggdom. Eggatha helps to promote eggs for Vicky Wass, the Pa. Egg Promotion Specialist.



HONEY BROOK

LIQUID & DRIED MOLASSES

HONEY BROOK DRIED MOLASSES

Crude Protein (Not less than)	5%
Crude Fat (Not less than)	0.1%
Crude Fiber (Not more than)	24%
Sugar (expressed as Invert)	45%

INGREDIENTS

Cane Molasses
Beet Molasses
Beet Pulp

50 Lb Bags

Z BRAND DRIED MOLASSES

Crude protein (Not less than)	4%
Crude Fat (Not less than)	0.1%
Crude Fiber (Not more than)	24%
Sugar (expressed as Invert)	38%

INGREDIENTS

Cane Molasses
Beet Molasses
Roughage Products

50 Lb Bags

— FOR —

- ★ DAIRY AND BEEF CATTLE
- ★ SHEEP
- ★ HOGS
- ★ POULTRY
- ★ TURKEYS
- ★ HORSES & PONIES
- ★ DOGS

CALL TOLL FREE IN AREA CODES 215 & 717: 800-662-7464

ZOOK MOLASSES CO.

WEST MAIN ST., HONEY BROOK, PA. 19344

ALONG RT. 322 PHONE: (215) 273-3776