

Milk Shakes



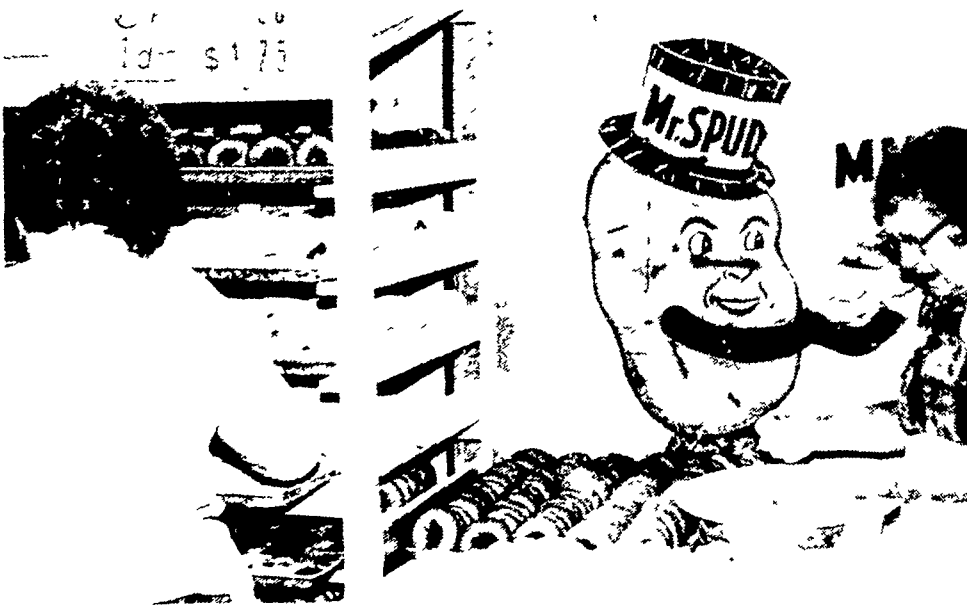
The Pa. Dairymen's Association stand has been managed by the Valley Grange of Lewisburg, York County, for at least 25 years. John Smith, York County Extension director, and Mrs. Luther Snyder assisted in the sales. John Blyholder, secretary - treasurer of the Dairymen's Association noted, "business is mighty good. Today, (Monday) is the biggest Monday ever." According to last year's records, 40,000 shakes were sold during the Farm Show.

Apples and Apple Cider



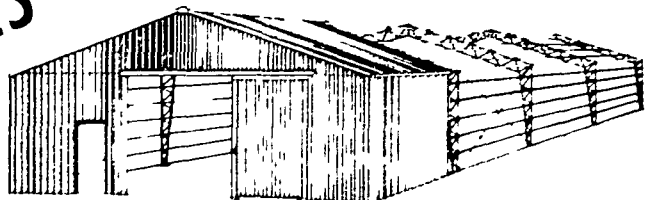
About 20,000 quarts of apple cider move during Farm Show Week. The State Horticultural Association also moves apples, apple butter, and other orchard treats.

Potato Do-nuts



Potato Do-Nuts are also a popular seller at the stand. The doughnuts are made on location, behind the stand. Each recipe uses potato granules to yield 19 dozen doughnuts.

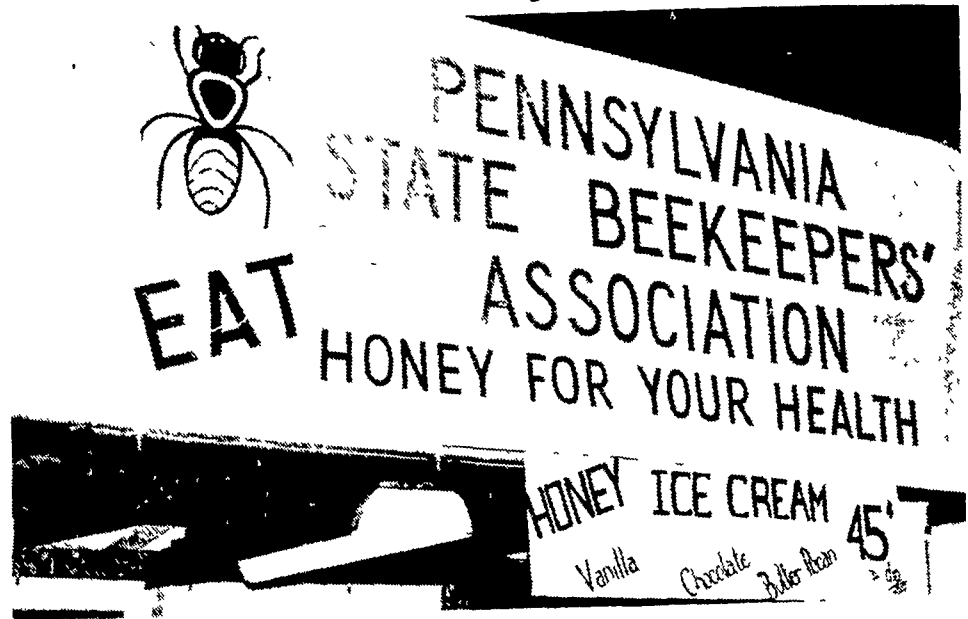
YES this building costs 40% less!



YES, it costs 40% less than conventional steel buildings!
PARTY CONSTRUCTION CO., INC.
 1218 Steuben St. Utica, N.Y. 13501 315-724-5593

Pennsylvania's products

Honey



The Beekeeper's Association sign displays their motto, "Eat Honey for your Health." Profits from the honey sales are contributed to the promotional efforts of the State organization. Specifically, the support of the State Honey Queen, Barbara Graybill.

Baked Potatoes



Violet Stehr and Lena Adams prepare baked potatoes complete with salt and butter. These ladies and many others from the Schuylkill, Northumberland County areas return to work at the Pa. Cooperative Potato Growers, Inc. food stand.

MAKING GASOHOL?

Our program doubles the sugar content of cantaloupes. It should do it in grain too. Try it.

LOOKING FOR FARM SHOW WINNERS?

We had no exhibit but we are winning with equal or better yields without spending for nitrogen and potash. Only phosphorus and BX soil bacteria. Non-livestock farmers may need some but a lesser quantity of nitrogen and potash. Ask for literature explaining the value of bacteria, earthworms, and soft rock phosphate. Many are getting big crops with these simple, inexpensive products. It is the utilization of the neutral forces. If others can do it, aren't you worthy of the inherent blessings provided? There are other blessings that go along with it — higher feed nutrition, sometimes 11 to 12% protein corn and 33 to 36% protein alfalfa, considerable higher sugar content for gasohol, better standability of grain, better soil tilth, less fuel needed, better bug disease and drought resistance, earlier spring warm up for planting because soil is spongy. Would you rather forfeit all these economical blessings and fork our more hard earned cash in the process?

ORGANIC CENTER

217 S. Railroad Ave., New Holland, PA 17557
 717-354-7064

P.S. Our soft rock phosphate lasts for years. Some of our customers skip fertilizer for several years. They sit pretty and can laugh at the Arabs for raising prices. Y NOT U PROVE IT? Then you know when worse come to worse. Apply our products early for best results.