

# Farm Calendar

Continued from Page A10)

**Wednesday, January 16**  
 Adams Co. Corn Day, Heidersburg Firehall, 9 a.m.  
 Lancaster-York vegetable growers meeting, Avalong Dairy, York, 9:30 a.m. to 3 p.m.  
 Hunterdon Co., N.J., Dairy Council Meeting, Extension Center, 8 p.m.  
 Futures marketing seminar, Easton-Northampton Vot-tech cafeteria, 7:30 p.m.  
 Hunterdon Co., N.J., farm photo display, Extension Center, 2-5 p.m. and 7:30-9 p.m.  
 Eastern Lancaster Co. Adult Farmer meeting, Union Grove School, Terre Hill, 7:30 p.m.  
**Thursday, January 17**  
 Upper Eastern Shore Annual Agronomy Day, Washington College, Chestertown, Md.  
 Adams Co. annual extension

meeting, New Oxford High School, 6:30 p.m.  
 Hunterdon Co. annual 4-H Association dinner and meeting  
 York Co. corn clinic, 4-H Center, 9:30 a.m. to 3 p.m.  
**Friday, January 18**  
 Milkers' School, Elkton Mehtodist Church, Cecil Co., Md. 10 a.m. to 3 p.m.  
 Hunterdon Co., N.J., beef project workshop, Extension Center, 8 p.m.  
 Franklin Co. gasohol seminar, St. John's UCC, \$4 registration fee, 9 a.m. to 4 p.m.  
**Saturday, January 19**  
 York Co. 4-H officer training session, 4-H Center, 9 a.m. to 3 p.m.  
 First day of New Jersey Farmers' Week

## LIQUIDATION FARM AUCTION

REAL ESTATE (170 PLUS ACRE FARM),  
 MODERN FARM MACHINERY  
**SATURDAY, JANUARY 26, 1980**  
 10:30 A.M.

For James McHale and Martha McHale, R.D. 2 Jamestown, Pa. 1/2 mile South of Jamestown borough on Dowling School Road, Green Twp., Mercer County. 22 miles North of Rt. 80, 22 miles North of Rt. 79. One mile from Pymatuning Lake.

Real Estate Offered at 12:00 Noon.  
 This is a Beautiful Farm.

170 acres of beautiful fertile sandy loam soil, most all tillable, with modern home, barns and buildings. 1.2 miles frontage, 40 x 60 barn with double 6 herringbone milking parlor with universal pipeline, 600 gal. bulk tank, all cemented loafing area. 38 x 100 modern stanchion and loafing barn. 40 x 85 four bay machine shed. 2200 bu. corn and 2000 bu. grain capacity drive thru crib. 2200 bu. wire crib. 17 x 40 Harvestore silo. Modern 3 bedroom home with large luxurious rooms. This is one of the nicer farms in the county. If you are interested in a farm, don't miss this one.

Terms on real estate. \$25,000.00 down day auction, upon confirmation of owners, balance in 30 days upon delivery of general warranty deed. Also selling all the modern machinery from this farm starting at 10:30 a.m. Telephone auctioneers for more information or complete brochure.

### OWNERS

**JAMES McHALE AND MARTHA McHALE**

Reimold Brothers Auction Service  
 Transfer, Pa. 412-962-2653

## COMPLETE DISPERSAL SALE

Having purchased a business (Customizers, Inc.) and having to devote full time to this business we are discontinuing our farming operation and will sell - located 1 mile east of Hagerstown, Md. on Route 40, north 1/2 mile on Edgewood Drive at Harry's Seafood Restaurant on

**SATURDAY, JANUARY 19, 1980**  
 At 10:30 A.M.

### 23 Head of High Grade Holstein Heifers 23

Consisting of 10 bred and 13 open heifers out of dams with records up to 25,680 lbs. milk and 1001 lbs. fat, and such sires as: Ivanhoe Prince, Arlinda Jet Stream, Paclamar Astronaut, Kel-B Imperial Truine, Arlinda Commander. All are calfhood vac. and T.B. tested. All heifers over 18 mos. will be Bangs tested and are free for interstate shipment.

### Four Tractors & Modern Machinery

John Deere 4230 w/turbo diesel tractor, W.F., 4 post roll guard, power shift, 1050 hrs. like new; Ford 5000 diesel tractor, 67 HP W.F.; Massey Ferguson 85 gas tractor, W.F. to be sold with loader; McCormick Deering antique 1020 tractor; M.M. 5-16 automatic reset plow; Oliver 3-14 trip back plow; Taylor Way 200-220 transport disc, 10 1/2 ft.; Int. pull type disc; Brillion 12 ft. transport spring harrow; White 543 no till 4 row corn planter w/Dicky John seed monitor, used 2 seasons; Fox Super 6 one row forage harvester w/corn head, 6 ft. pickup attachment; 6 ft. direct cut head; Dion 60 in. fan hopper blower, used for 50 loads; Papec table chopper blower; Gehl 620 silage wagon w/high floatation tires; M.F. 7 ft. dyna balance mower; Gehl 880 windrower, 9 ft., used 3 seasons; Lely 3 pt. wheel rake; M.F. 124 baler w/thrower; hay preserver applicator; 28 ft. hay elevator w/hydraulic lift; 3 Grove wagons w/16 ft. hay sides, 1 with combination hay and feeder sides; M.F. 205 P.T.O. manure spreader; Onan 15000 watt alternator on 3 pt. frame; 2 wheel farm trailer; Int. 80 box scraper, 8 ft.; 3 pt. 6 ft. scraper blade; J.D. 6 ft. manure bucket; Van Brunt horse drawn grain drill; portable metal hay rack; round bale hay rack; Promo tanks; mineral feeder; Metal stanchions; yokes; etc.

1967 Chev. 50 truck w/14 ft. grain body, approx. 60,000 miles.

This is good clean machinery in good condition and ready for field.

TERMS: Cash - Not Responsible for Accidents.

AUCTIONEER: Robert C. Mullendore

CLERK: C.L. Metz

### DOUBLE E. DAIRY

Kelly & Randy Eakle

Phone: (301) 797-7727

LUNCH RIGHTS RESERVED

## PUBLIC SALE OF FARM MACHINERY AND HAY STRAW AND CORN SATURDAY, FEBRUARY 9, 1980

11:00 A.M.

Location: Along Peach Bottom Road, 3/4 mile west of Route 222 at Wakefield. 20 miles south of Lancaster.

John Deere 3020 diesel w/wide & tricycle front 589 hrs. (nice), John Deere 148 loader w/6 ft. material bucket, (nearly new), John Deere F125-3 bottom 16 in. trip plow, John Deere 210 disc. 12 ft., new 10 ft. John Deere spring harrows, Brillion 10 ft 8 in. cultimulcher (like new). New Holland #276 baler w/thrower (like new), Hesston PT10 haybine, New Holland Crimper, 26 ft. elevator w/motor, New Holland #770 harvester w/2 row corn head and pickup, J.D. 115 Chuckwagon, J.D. #65 blower, J.D. 1250-6 narrow row cornplanter, New Idea #201 manure spreader, rubber tired wagon, Sonoco grain cart w/unloading auger, post hole digger.

### 16 BUSHEL HOME GROWN CLOVERSEED

3 bushel timothy seed, 10 ton straw, 5 ton alfalfa and mixed hay, 100 bu. oats, 2 outdoor metal troughs 12 & 14 ft., 6 bales twine, PTO grass seeder, 10 ft 4 in auger w/motor, J.D. hyd. cylinder, Dewalt radial arm saw Model 740, Rockwell drill press on stand w/motor, airless paint sprayer, sump pump, suction pump 3 gal. per second, 1/2 ton chain hoist, 12 ton hyd. jack & others, 2 elec. motors, high pressure steam cleaner, acetylene torch, space heater.

J.D. 110 lawn & garden tractor w/36 in mower, Sears chain saw, 7 in belt (short), 5 hp roto-tiller front mount sawbuck, Fairbanks platform scales, log dogs, load binders, 4 log chains, ropes, hand saws, roll barb wire, forks, shovels, brooms and many articles not mentioned.

Terms By,

**VICTOR FITE**

717-548-2321

J. Everett Kreider Auct.

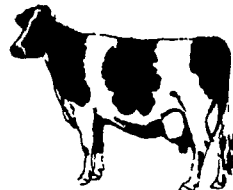
Lunch by Robert Fulton Auxiliary

## DAIRY SALE

NEW HOLLAND SALES STABLES, INC.

New Holland, Penna.

**WEDNESDAY, JANUARY 16**



The Dave Sefton Herd from Butler County. Forty-five years in the Registered Business.

Herd consists of 40 Cows, a few Heifer calves and a few open Heifers.

\* A 2 year old Round Oak Rag Apple Elevation. Dam Paclamar Astronaut bred to Lawcrest Marvex due sale time.

\* A Citation R Maple VG 5 years sells fresh with her calf from Snowman. Records - 4 yrs. 305, 16,040, 618, 3.9. 5 yrs. 305, 16,760, 610, 3.6.

\* A 2 year old Sterk Exclusive sells fresh. She was a Jr. Champion at Ohio District Show in 1979.

\* A 4 year old Round Oak Rag Apple Elevation classified VG 86 as a 2 year old. Dam Fond Matt bred to Bootmaker. Due sale time. 2 yr. rec. 283, 15,130, 593, 3.9. 3 yr. rec. 313, 21,180, 874, 4.1.

\* A 3 year old Paclamar due end of Jan. Dam is EX.

Other Sires: PennState Ivanhoe Star, Harrisburg Gay Ideal, Hilltop Apollo Ivanhoe, Glendell Arlinda Chief, Skagvale Startrek. 16 of these cows fresh in last 6 weeks. 17 due to freshen January and February.

Balance in all stages of lactation. Certified and accredited herd with 30 day test. Pregnancy checked at sale barn.

A lot of these cows are bred to Marvex.

Also 1 load of Purebred and Grade Holstein Cows consigned by H.D. Matz.

Also 20 head Holstein Cows from one herd.

Henry Kettering, Pedigrees

Abram Diffenbach, Mgr. 717-354-4341

## FIGHT FIRE WITH COMMON SENSE!

## MACHINERY AUCTION

SAT., JAN. 19

9:30 A.M.

Auctions held 3rd Tuesday of each Month - Thereafter

MINNESOTA IMPLEMENT CO.  
 GRAND MEADOW, MINNESOTA

Consign Early-Consignment Accepted Until Sale Time.

### 150-200 New & Late Model Tractors

MF: 2570, 220 hrs; 1135; 1130; 1100; 180 W/loader; 180; 165; 175; 35; 40; 65. WHITE & OLIVER: 2-70's; 2-150's; 1855; 1850; 1750; 1800; 1600; 88; 1650; 1950T. FORD: 9600; 8000; 5000; 4000; 3000; 861; 600; 8N. STEIGER: Wildcat 270; R.C. 270; Bearcat II. NEW JD: 8640; 4840; 4640; 4440; 4240; 4040. USED JD: 8430; 7520; 4630; 4430; 4230; 2630 w/loader; 4030; 2030; 4520; 4320; 4620; 4020 Gas & D; 3020 Gas & D; 3010; 2510; 5020; 5010; 4010; 2020; 730; 620; 60. NEW IHC: 1586; 1086. USED IHC: 1586; 1086; 1566; 1466; 1468; 1066; 100 Hydro; 966; 1456; 1256; 850; 756; 656; 1206; 4100 w/Duals; 706; 560; 574; 474; 460; 454; 450. NEW CASE: 2590; 4890. USED CASE: 2410; 3 pt. & PTO; 1370; 970; 1175; 1030; 930; 830; 800; 1410 David Brown; 1210 David Brown. MM: 900 w/cab; G1000; 955; 670; U & loader. AC: 7080; 7050; 7000; 7030; 185; 190XT; 220; 180 w/cab; 200; 170 & loader; 160 & loader; D19; D21; D17 Series IV; D14; WD.

### COMBINES

7720, 4/W/D, 300 hrs., like new; 1979-TR70 w/caron & grain head, 310 hrs., sharp, like new; 7700 4/W/D & grain head; KKS Gleaner w/grain & corn head; Late 510 MF grain head; Oliver 525; Case 1660; Case 1160; JD 3300 w/cab & air; IH 914.

### INDUSTRIAL EQUIPMENT

350 B Crawler; 480 A Forklift; Case W 12; 584 D Forklift; Koehring 166 loader Backhoe; Melroe 70 hydro skid loader; Case 1537 Skid loader; Case 1816 Skid loader; IH 3500 loader backhoe; AC HG6 crawler loader; Ford 340 loader; Case 1830 U & loader.

### CHISEL PLOWS & PLOWS

New JD 2500 7X; New 720 5x18; Oliver 7B; AC7X; IH 710 5X; IH 806 12X; JD F145 3, 4, & 5X; IH No. 70 4X; Hiniker 816 chisel, new; Hiniker 1325 chisel, new; Oliver 565 4X; IH 700 6X; IH 560 6X; Hiniker 1560 58' cult.; Versatile 18' cult.; JD 1100 cult. like new; Case 6X.

### DISCS

JD 230; JD 220; IH 480; IH 48; JD BW; JD BWF; Kewanee 820; Krause 19'; Oliver 21'; IH No. 37; JD RW; JD TWA: Cook Offset; Bush Hog offset, Krause 21' like new; Ford 246 sharp; Miller 16' offset

### MISCELLANEOUS

New Brent Grain cart; Hinson 812 grain cart; Gehl 95 mixer mill; Farmhand mixer mill; New Artsway mill; New 3 pt. blades; Schwartz feed wagon; tractor cabs; New 8200 JD drill; Hesston Stackhand No. 10; Hesston Stackhand No. 30; Hesston round baler, new; New Post hole digger; NI 324 picker; NI 216 spreader; Owatonna 95 mill, sharp; New rock picker; IH 500 cyclo planter; Hesston chopper w/3R head & pickup. Several more discs, plows, planters, field cults., chusels & drills of all sizes & many more items by sale day. Several late model corn & grain heads for all combines at private sale.

NOTE: Many more items by sale date, few items subject to prior sale. Best loading facilities in state, trucks available for delivery. Located: 25 miles south of Rochester, Mn., 15 min. from Rochester Airport. Private air strip 2500 ft. hard surface 1/4 mile from sale site.

NOTICE: CHANGE OF SALE DATES to 3rd Tuesday of the Month. Next Sale Date: Tuesday, February 19, 1980.

Sale Conducted By

**MIDWEST AUCTION COMPANY**

Grand Meadow, Minnesota

507-754-5121 or 507-754-5171