

## Junior beef breeding champions named

HARRISBURG — Diane Krause of Slatington, Lehigh County, repeated her performance of the day before, to also take the championship of the junior beef breeding, Angus competition.

The champion, "ABF Grand Erica" was named the champion female of the opening Angus breeding show.

Fritz Frey of R2

Quarryville, exhibited the reserve champion Angus, "Twin Oaks Princess Pat" He is a member of the Lancaster County 4-H Beef and Sheep Club. Fritz is the son of Mr and Mrs Fred Frey

Shelbee Poole of Stoneboro, Mercer County, showed the grand champion Hereford in junior beef breeding classes at the 64th Farm Show, "Belle Elevator

826.' She is a member of the Mercer County 4-H Beef and Lamb Club. Shelbee is the daughter of Mr and Mrs. Robert Poole. Her champion was purchased in Montana.

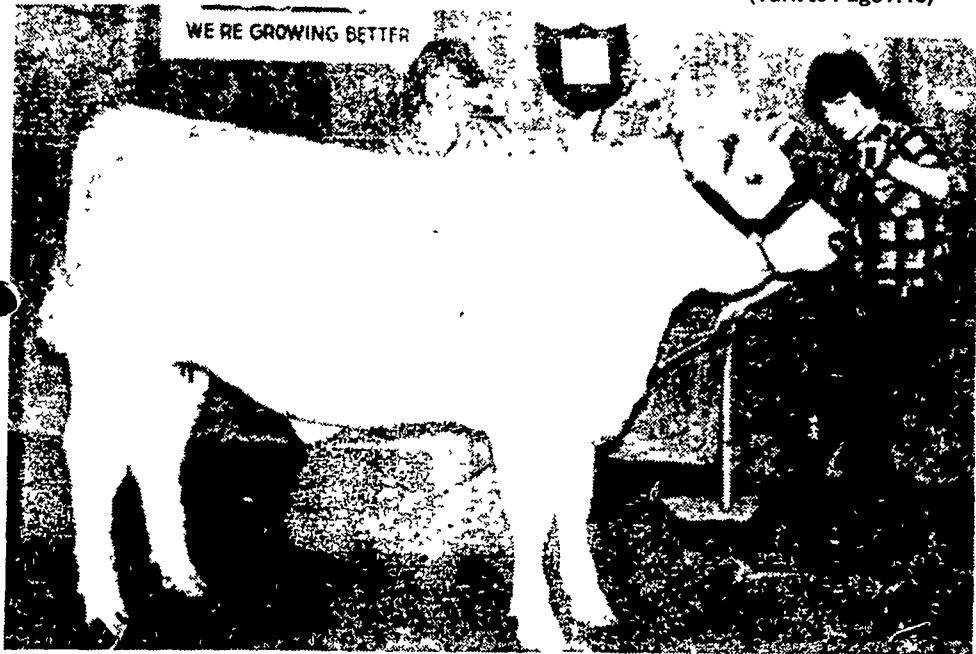
Reserve champion Hereford, "PSL MS Banner Vic," was shown by Lowell Milda of Marianna, Washington County

He has shown five beef projects as a member of the Pike Run 4-H Ag Club.

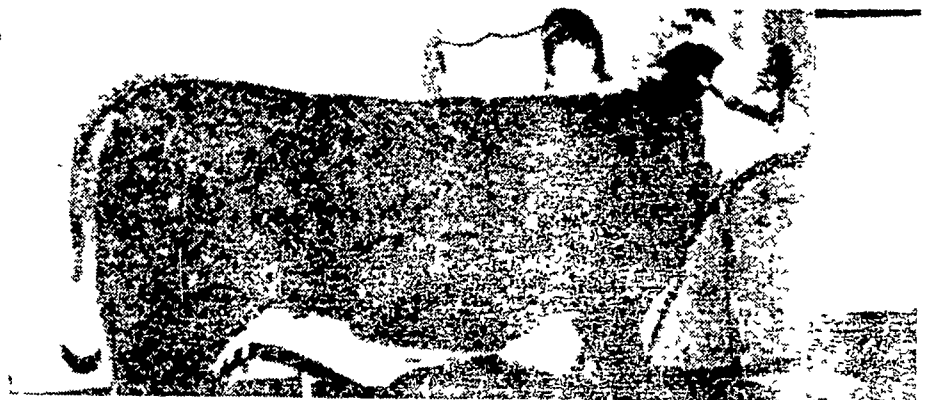
(Turn to Page A40)



Diane Krause showed ABF Garand Erica in both the open and junior shows to capture two female championships. Erica was sired by Blackcap Granduer. Her dam was Walbridge Evgn Erica. To add to her list of honors, Diane was named the grand champion showman of the junior show. Tuesday evening she was also crowned the 1980 State Angus queen.



George Wilson, IV, of Lebanon showed the grand champion Charolais, Angel. This was George's first year of showing as a member of the Little Dutchman FFA Chapter. Angel's sire was XXI Century.

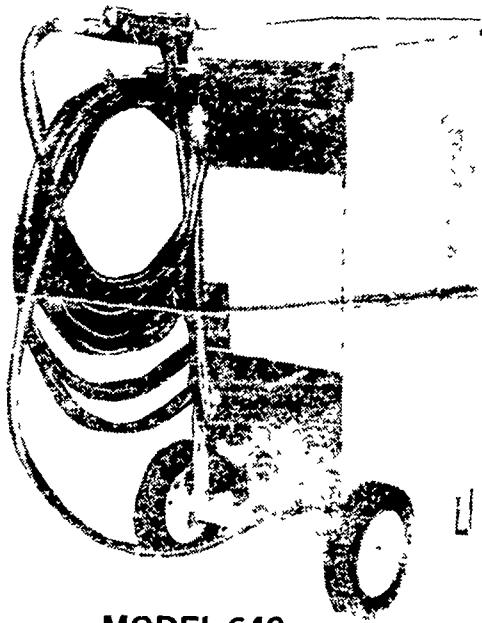


Shelbee Poole of Stoneboro, Mercer county, showed the grand champion Hereford. her father, Robert Poole chose the champion from a Montant herd.



### UTILITY POWER WASHER

Model 640 and 680H are IN STOCK



MODEL 640 -

EQUIPPED WITH 1 4,000 P.S.I. 35 Ft. HOSE AND CHEMICAL TANK

The HANDY 640 has a fine adjustment metering valve to control mix from the chemical tank; changes in water supply pressure may be compensated by a simple resetting of the dial to match mixing table furnished.

MODEL 640 \$250<sup>00</sup>

MODEL 680H \$285<sup>00</sup>

## Taylor-Way

PULL-TYPE THREE-BAR CHISEL PLOWS With TRASH EATER ATTACHMENT Set Up And Ready To Go



Check These Soil Conserving and Trash-Eating Features

- 20" Coulters, spaced 9" apart and mounted on 1-1/8" Square Axles rips through sod and stalks to make chiseling easier
- Flexible Bearing Hangers lets Coulters glide over rocks and underground obstructions
- Triple-Sealed Regreasable Ball Bearings are mounted in heavy Pillow Blocks
- Weight Holders shipped as Standard Equipment. Use weights in rough and hard conditions to increase penetration Weights not furnished, use standard tractor weights.
- Trash-Eater Tool Bar mounts forward of front tool bar on Chisel Plow allowing all shanks to be used on true 12" spacing
- Coulters easily adjusted up or down Lets you adjust for both soil conditions and shank sizes Insert ratchet into holes in Flexible Bearing Hanger, remove pin and ratchet up or down as desired

★ SAVES TIME ★ MAKES MONEY

FLEXIBILITY - Use as a complete Trash-Eater or as Chisel Plow when only a Chisel Plow is needed

CLEARANCE - Can be used on Taylor-Way Chisel Plows equipped with either 26" or 32" Shanks

ADAPTABILITY - Fits any Taylor-Way Pull-Type Chisel Plow

TWO 10 Ft. TAYLOR-WAY CHISEL PLOWS w/Trash Eater Attachment

Two Only

SPECIAL PRICE \$3,200<sup>00</sup>

## HEISEY FARM EQUIPMENT, INC.

SALES, SERVICE and PARTS

- Leyland & Same Tractors
- Taylorway-Dunham
- New Idea

- GT Dryers
- Landoll
- Dion

RD1, Box 2294, Jonestown, PA 17038

Phone: 717-865-4526

Located 1/2 Mile South of Fredericksburg off Rt. 343 in Shirksville  
Business Hours: 7 A.M. to 5 P.M. Daily, Sat. till noon, Evenings by Appt.